



# 2014 Earth Day Summit

Monday April 7, 2014

## Recycling Tonnage Grants

Joe Davis, Database Analyst

NJ Dept Environmental Protection  
Bureau of Recycling and Planning

PO Box 414

Trenton, NJ 08625-0414

Office: 609-984-3438

[Joseph.Davis@dep.state.nj.us](mailto:Joseph.Davis@dep.state.nj.us)

# Direct Ocean Dumping 1950



Staten Island, NY

It was legal to dump industrial waste into the ocean until the Ocean Dumping Act was passed in 1972.

The **Mobro 4000** was a barge made infamous in 1987 for hauling the same load of trash along the east coast of North America from NY to Belize and back until a way was found to dispose of the garbage.



**BURN IT. BURY IT.  
RECYCLE IT.  
OR SEND IT ON A  
CARIBBEAN  
CRUISE.**



# Made by Man ~ Seen From Space



Great Wall



Pyramids

# *WELCOME TO NEW JERSEY*



# Fresh Kills Landfill

## 2,200 acres of trash



# GROWS, Tullytown, PA

(Geological Reclamation Operations & Waste Services)



At one point, GROWS was considered the 2nd largest landfill in the U.S., after Fresh Kills (now closed).



[recyclenj.org](http://recyclenj.org)



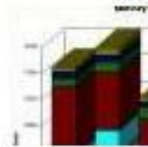
**Environmental Benefits of Recycling**



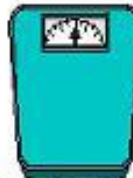
**Helpful Links**



**New Jersey's Recycling Law & Recycling Rules**



**New Jersey Recycling Statistics**



**New Jersey Recycling Tonnage Grant Program**



Preserving Resources  
Preventing Waste  
**New Jersey WasteWise Business Network**



**Product Stewardship**



**Recycling Awards and Recycling Poetry Contest**



**Recycling Enforcement**



**Recycling Center & Recycling Markets Directory**



**Recycled Product Resources**



**Source Reduction (Waste Reduction)**

**Look for the bathroom scale**

## HISTORY

**In the early days of the program, the Solid Waste Services Tax funded the TG.**

**Grants were \$3-\$5 million total. Today, they're more than \$13 million,**

The “Clean Communities and Recycling Act” of 1981 created the Municipal Recycling Tonnage Grant Program, whereby municipalities could receive a grant for the amount of materials documented as being recycled during the previous calendar year. At that time, the program was on a voluntary basis. Approximately 250 municipalities reported recycling 250,000 tons of materials in 1982.

In 1987, the “New Jersey Statewide Mandatory Source Separation and Recycling Act” (the Act), specifically N.J.S.A. 13:1E-99.16, mandated the governing body of each municipality to submit an annual Recycling Tonnage Report summarizing the amount of material recycled during the previous calendar year.

In January 2008, the “Recycling Enhancement Act” N.J.S.A. 13:1E-96.b.(1), specifically P.L. 2007, c. 311, reestablished funding for local recycling programs through a tax of \$3.00 per ton on all solid waste accepted for disposal or transfer at solid waste facilities, requires the appointment of Certified Recycling Professionals (Coordinators) and specifies that grants received may only be expended on recycling.

60% of the money collected from this tax is distributed through the annual Recycling Tonnage Grants program to municipalities. [All grant and REA tax moneys received by a municipality shall be expended only for its recycling program].

30% of the fund is distributed to counties.

5% of the fund is used to provide grants to institutions of higher education to conduct research in recycling.

5% of the fund will be used by the Department.

## **More Money More Problems**

**Any use of TG for Salary must be commensurate with recycling activities.**

**DPW staffer, John Williams, spends 10 hours per week on recycling. Based on his 40 hr week, the TG can be used to cover 24% of John's salary.**

**Part timer, Diane Smith spends six hours per week as Municipal Recycling Coordinator. Diane does nothing else. 100% of her salary may be paid from the TG.**

Pursuant to P.L. 2007, c. 311 (The Recycling Enhancement Act), "All grant monies received by a municipality shall be expended only for its recycling program". Therefore, the grant dollars you receive from the Recycling Tonnage Grant must be used exclusively for recycling purposes. Purchasing items made from recycled content which are not used for recycling purposes are not eligible. While no specific, exhaustive list of eligible uses has been established, the following uses are eligible:

recycling containers, maintenance of municipal drop-off centers, management of municipal compost sites, household hazardous waste and e-waste events (to the extent that collected materials are recycled, and not disposed), salary and costs related directly to the collection, education and outreach of municipal recycling programs or the enforcement of local recycling ordinances. Vehicles used for commutation are strictly forbidden.

**ONE OF THESE TRUCKS IS NOT LIKE THE OTHER...**



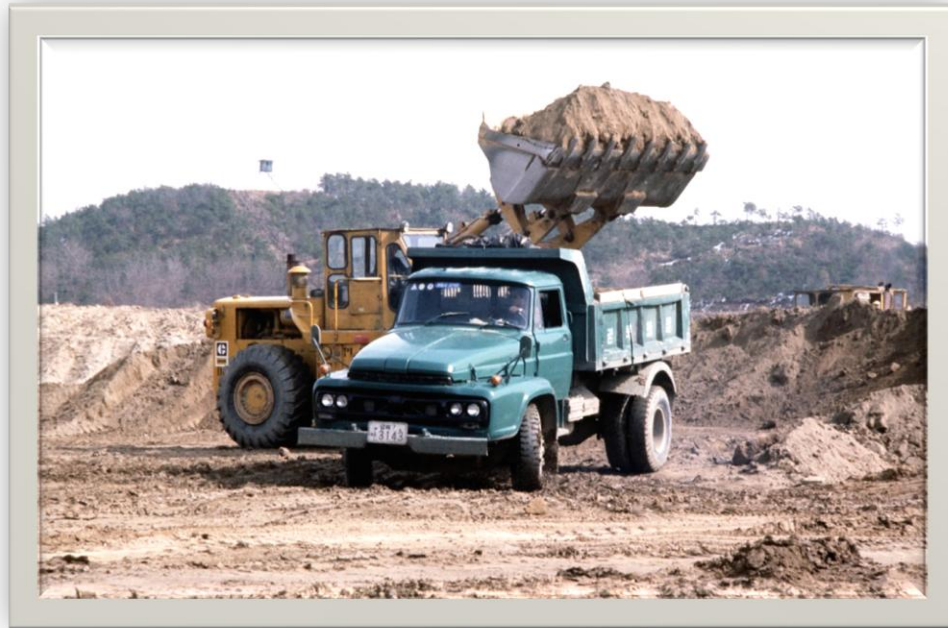
**ONE OF THESE TRUCKS JUST DOESN'T BELONG.**



**NO**



**YES**



# THE REPORTING PROCESS

## **We're paperless!**

For more than ten years, the Tonnage Grant program has used Excel as the method of reporting recycling data.

2008 was the last "Blue Book" delivered through the US Postal Service.

Recycling Tonnage Reports shall be submitted as a spreadsheet compatible with the Microsoft Excel structure provided by the Department. You may obtain a copy of the approved Excel file by visiting our web page:

<http://www.nj.gov/dep/dshw/resource/tonnage/>

or by contacting Joe Davis by phone  
– (609) 984-6907.

County Code	Town Code			TONS	SECTOR	MATERIAL	DEPID	County Name	Town Name	End Market
00	00			0.00	C	Corrugat	01	County	Tow n	end market
00	00			0.00	R	Corrugat	01	County	Tow n	end market
00	00			0.00	C	Mixed Or	02	County	Tow n	end market
00	00			0.00	R	Mixed Or	02	County	Tow n	end market
00	00			0.00	C	Newspap	03	County	Tow n	end market
00	00			0.00	R	Newspap	03	County	Tow n	end market
00	00			0.00	C	Other Pa	04	County	Tow n	end market
00	00			0.00	R	Other Pa	04	County	Tow n	end market
00	00			0.00	C	Glass Co	05	County	Tow n	end market
00	00			0.00	R	Glass Co	05	County	Tow n	end market
00	00			0.00	C	Aluminu	06	County	Tow n	end market
00	00			0.00	R	Aluminu	06	County	Tow n	end market
00	00			0.00	C	Steel Co	07	County	Tow n	end market
00	00			0.00	R	Steel Co	07	County	Tow n	end market
00	00			0.00	C	Plastic C	08	County	Tow n	end market
00	00			0.00	R	Plastic C	08	County	Tow n	end market
00	00			0.00	C	Heavy Ird	09	County	Tow n	end market
00	00			0.00	R	Heavy Ird	09	County	Tow n	end market
00	00			0.00	C	NonFerro	10	County	Tow n	end market

## Keep the Structure

Add as many rows as necessary but leave the columns in tact.  
Use columns C and D for your own needs.

County Code	Town Code			TONS
00	00			0.00
00	00			0.00
00	00			0.00
00	00			0.00
00	00			0.00

You may want generator phone number.

You may want to leave a note.

You can just leave them blank, but don't delete.

Notice 18 separate corrugated entries.  
Edison reports C separate from R but it makes no difference.

## What's key?

**WHAT IS IT?    HOW MUCH?    WHERE DID IT GO?**

County	Municipality	Cat	Stat	SumOfTonnage	Sector	Material	DEP ID	County	Municipality	Market
12	05			142.81	C	Corrugated	01	Middlesex	Edison	
12	05			30.04	C	Corrugated	01	Middlesex	Edison	FREEHOLD CARTAGE INC
12	05			889.95	C	Corrugated	01	Middlesex	Edison	GP HARMON
12	05			13.00	C	Corrugated	01	Middlesex	Edison	GREEN SKY RECYCLING
12	05			40.77	C	Corrugated	01	Middlesex	Edison	IMPORTICO-FALGI INDUSTRIES
12	05			20.54	C	Corrugated	01	Middlesex	Edison	INTERSTATE WASTE
12	05			307.90	C	Corrugated	01	Middlesex	Edison	JFD ASSOCIATES
12	05			0.68	C	Corrugated	01	Middlesex	Edison	MAZZA & SONS
12	05			21.81	C	Corrugated	01	Middlesex	Edison	MONTECALVO DISPOSAL SERVICES
12	05			778.47	C	Corrugated	01	Middlesex	Edison	RECYCLED FIBERS
12	05			34.34	C	Corrugated	01	Middlesex	Edison	RELIABLE COMPUTER SERVICES
12	05			125.00	C	Corrugated	01	Middlesex	Edison	STANDARD WASTE
12	05			29.76	C	Corrugated	01	Middlesex	Edison	VEOLIA ENVIRONMENTAL SERVICES
12	05			1550.21	C	Corrugated	01	Middlesex	Edison	WASTE MANAGEMENT
12	05			1284.47	C	Corrugated	01	Middlesex	Edison	WASTE MANAGEMENT OF NJ
12	05			103.73	C	Corrugated	01	Middlesex	Edison	FCI
12	05			6.30	C	Corrugated	01	Middlesex	Edison	AUTOZONE - DISTRIBUTION CENTER
12	05			12.70	C	Corrugated	01	Middlesex	Edison	STAPLES DISTRIBUTION CENTER
12	05			67.60	C	Mixed Office Paper	02	Middlesex	Edison	ALL COUNTY RECYCLING
12	05			320.69	C	Mixed Office Paper	02	Middlesex	Edison	CINTAS DOCUMENT DESTRUCTION
12	05			8.58	C	Mixed Office Paper	02	Middlesex	Edison	FREEHOLD CARTAGE INC

You are altering the all powerful and mysterious budget which is

**“etched in stone”.**

**Report & Resolution:** Your Excel file and municipal resolution shall be attached to an email with your town name in the subject header and contact name with telephone number in the body of the email sent to [joseph.davis@dep.state.nj.us](mailto:joseph.davis@dep.state.nj.us). Tonnage reports are due by April 30th annually.

Municipalities may not alter their budget without passing a resolution. Since your town is eligible to receive a recycling tonnage grant, you'll need to provide a NEW Municipal Resolution each year, and applicants who fail to file an appropriate municipal resolution pertaining to their tonnage report will not be eligible for the recycling grant.

Make sure your resolution identifies the 2013 RECYCLING TONNAGE GRANT. Remember, you are applying for a grant which is titled “2013 Recycling Tonnage Grant”. Your town may pass its resolution in calendar year 2014, but you are still applying for a “2013 Recycling Tonnage Grant”. NOTE: If your resolution was passed in calendar year 2013, it will be assumed that resolution was for the 2012 RECYCLING TONNAGE GRANT.

**So you need a new Resolution identifying the grant.  
Not the current year!**

**Believing in  
reimbursements is a  
loser's game.**

**There is no reimbursement**

**There is no reimbursement**

**There is no reimbursement**

**There is no reimbursement**

**There is no reimbursement**

**There is no reimbursement**

**There is no reimbursement**

**There is no reimbursement**

**There is no reimbursement**

**REA Tax Identification Statement:** Please be advised that municipalities shall maintain, for an annual audit of registered municipal account, a bill or statement from your transporter or facility itemizing the tax as a separate line item.

There is no reimbursement and the tax identification statement is not a requirement to receive a Recycling Tonnage Grant. The tax identification statement is a tool which guarantees that your Tonnage Grant will be no less than the tax paid.

*Please be advised that municipalities shall maintain, for an annual audit of registered municipal account, a bill from your transporter or facility itemizing the tax as a separate item. Municipalities should not calculate or estimate their tax based on weight receipts from a transporter or solid waste facility.*

Your REA Tax ID Statement shall be attached to an email with your town name in the subject header and contact name with telephone number in the body of the email sent to [REATAX@dep.state.nj.us](mailto:REATAX@dep.state.nj.us). REA Tax ID Statements are due by April 30th annually and will be processed separate from your Tonnage Report.

**Successful programs earn more than the tax.**

# Confused?

## Why the crazy time lapse?

April 2008 : Treasury begins collecting the REA Tax and 2007 Tonnage Reports were arriving.

April 2009: 2008 Tonnage Reports and 2008 REA Tax Statements were arriving.

Fall 2009: 2007 TG were paid based on 2007 recycling tonnage AND 2008 REA Tax Statements.

Tonnage Grant Year	2012 TG	2013 TG	2014 TG	2015 TG
Report Due	4/30/13	4/30/14	4/30/15	4/30/16
REA Tax	2013 (taxes paid on 2013 SW). Reported in 2014.	2014 (taxes paid on 2014 SW) Reported in 2015.	2015 (taxes paid on 2015 SW) Reported in 2016.	2016 (taxes paid on 2016 SW) Reported in 2017.
Grant Awarded	2014	2015	2016	2017

# CRP & MRC

By law every town must designate someone as the Municipal Recycling Coordinator.

MRCs do not need to be Certified Recycling Professionals.

A CRP signing-off for a MRC is not liable for accuracy or fraudulent data.

The CRP is reviewing for structure and completion of data fields (muni codes, mkts).

eMail is the signature.



To: [joseph.davis@dep.state.nj.us](mailto:joseph.davis@dep.state.nj.us)

From: [Lisa.Roosevelt@jerseycity.com](mailto:Lisa.Roosevelt@jerseycity.com)

CC: [Reggie.McCoy@westnewyork.nj.us](mailto:Reggie.McCoy@westnewyork.nj.us)

Subject: West New York

Attached is West New York's 2013 tonnage report. Any questions, call Reggie McCoy at 201-555-7777.

## Recycling Coordinator Certification:

Beginning 2012 [http://www.cpe.rutgers.edu/programs/recycling\\_solid\\_waste.html](http://www.cpe.rutgers.edu/programs/recycling_solid_waste.html)

**Shared Services Agreements:** The Department does not require you to submit a shared services agreement. Any agreement you may have with another town is optional and does not require Department review.

**Material Values:** The program reserves the right, (if applicable, based on availability of funds) to pay different rates for different materials. For example, the Solid and Hazardous Waste Management Program may pay a higher rate for the recycling of plastic containers than for concrete.

**Local Ordinance:** Pursuant to state law, each municipality shall have in place an ordinance that mandates the separation and recycling of designated recyclable materials from the residential, commercial and institutional sectors. A mechanism for enforcing this ordinance is also to be in place. Please be advised that future grants may be in jeopardy if it is determined that a minimum level of local recycling enforcement is not being met.

**File retention:** All documentation is assumed to be part of the Excel data submitted via e-mail. The applicant must still obtain the appropriate documentation and retain it for five years in the event of a field review. Because you will be reporting electronically, there is no need to file any paper.



## Material Values

\$5		\$2		\$1		\$0.50		\$0.10	
21 Electronics	01 Corrugated	12 Anti-freeze	09 Iron (ferrous)	20 Stumps					
	02 Office Paper	15 Tires	10 Alum (non-ferrous)	22 Concrete/Asphalt					
	03 Newspaper	16 Motor Oil	11 White Goods	27 Petrol Soils					
	04 Junk Mail	17 Brush/Tree Parts	13 Auto Batteries	28 Process Residue					
	05 Glass Containers	18 Grass Clippings	14 Scrap Autos						
	06 Aluminum Cans	19 Leaves	30 Wood Scraps						
	07 Steel Cans/Oil filters	23 Food Waste							
	08 Plastic Containers	24 Misc. Materials							
	25 Other Glass	29 Textiles / Carpet							
	26 Other Plastic								

The Act restricts the dollar amount of the tonnage grant monies to no more than \$10.00 per ton for any given material.

**2011 = \$9, \$3.80, \$1.25, \$0.30 and \$0.10**



**Yes or no?**



## COMMON QUESTIONS

When is the report due? The report is due April 30<sup>th</sup> of each year.

How much money are we getting? That depends on two things: the amount of available money from the State, and the tonnage reported on your Tonnage Report.

You are required to use your Recycling Tonnage Grant on recycling activities only?

Why must I submit a Municipal Resolution? Each town develops a budget, which they file with the Dept. of Community Affairs. Your town can not alter its budget without passing a resolution.

What's the deal with the REA Tax? All solid waste disposal is taxed at \$3.00 per ton.

What are the most common materials NOT eligible for the tonnage grant? Clean soil, utility poles, construction & demolition debris (C&D) unless the material has been broken out as concrete, wood etc.

How long should I keep my documentation? Towns are required to maintain their records for five (5) years.

## COMMON ERRORS

This is a paperless program. When you attach your report, tax statement and resolution to an email. Your email to me is your signature. Make sure you provide your Name, Town and Phone number in the body of the email.

**Provide your town name in the subject header of the email.**

Propane tanks and oil filters are both #07 Steel Containers.

Copper & Brass are #10 NonFerrous/Aluminum Scrap.

Christmas trees, organic or vegetative are all #17 Brush/Tree Parts.

Millings or RoadEx are #22 Concrete / Asphalt / Brick / Block. Also, when an asphalt company reports commingled they're not referring to cans and bottles. They're referring to #22 Concrete / Asphalt / Brick / Block.

If you can eat it it's #23 Food Waste. Cooking oil is not Miscellaneous.

Plastic reported by Verizon is #26 Other Plastic – not plastic containers.

Never report dirt. If it's not petroleum contaminated leave it alone.

Clothing and carpet are both #29 Textiles.

Fluorescent Lights are #24 and have their own material name. Please do not list them as consumer electronics.