



Changing Times



Volume II, Issue I

Spring 2004

Spring has sprung and Daylight Savings begins our “Changing Times” spring season. Over the winter, we have had some really great meetings such as the NJ Vegetable Growers Association at the Borgata in Atlantic City with 1,800 attendees, our Central Jersey Vegetable Growers meeting with a record 140, the Central Jersey Nursery and Landscape meeting with about 200 and the Monmouth County Board of Ag Dinner in Cream Ridge with over 100 members including guests Dean Karyn Malinowski, Farm Bureau President Richard Nieuwenhuis and Freeholder Ted Narozanick.

We have also had a few interesting ag developments. First, thanks to the kids from Brick Township Schools, highbush blueberries were approved as the official state fruit (sorry Jersey Tomato – you’re a fruit botanically but not by governmental decree). Second, the 1,000th farm was certified in the Farmland Preservation Program. Congratulations to Taylor Palmer and family in Manalapan. Finally, the 89th State Agricultural Convention for NJ was a resounding success at its new site in Monmouth County. (See adjacent article.)

Peas are popping up, grasses are greening and bok choy is bursting through among several of our cool season crops. Let’s all look forward to a good season of growth.

Bill Sciarappa



“George and my 4-year terms on the State Board can be characterized as ‘A Time of Change.’”

Doc Dey



Dr. Stephen Dey, President State Board of Ag, and George Dean, Vice President.

“A Time of Change”

Bill Sciarappa and Vivian Quinn

NJ State Board of Agriculture President Dr. Steven Dey welcomed delegates and visitors to the 89th NJ State Ag Convention held Feb. 3-5, at the Ocean Place Hilton in Long Branch. He thanked Secretary Charles Kuperus and his staff for putting together a convention where all can learn about NJ Ag policy and the direction it will be going in the coming months and years.

President Dey spoke about the many steps toward reorganization of the Department of Agriculture and the State Board, leading to new goals and strategies over the last four years. These changes have enabled the State Board to be proactive in industry and to have a plan or can react quickly to crisis. Dr. Dey stated, “George and my 4-year terms on the State Board can be characterized as ‘A Time of Change.’”

(Continued on page 7)

Agricultural Smart Growth Plan sows seeds for bountiful farms

By Charles M. Kuperus - Asbury Park Press - January 16, 2004

The Agricultural Smart Growth Plan for New Jersey can be accessed at www.state.nj.us/agriculture.

New Jersey has a finite land base of 4.8 million acres that is shared by urban, suburban and rural communities alike. Much of that land is already developed or has been preserved. What remains is 1.7 million acres of unprotected, undeveloped land, more than half of which is actively devoted to agriculture and forestry production.

This is land where our Christmas trees are grown, where the sweet corn we look forward to on the Fourth of July is harvested and where the mums that decorate our homes in the fall are produced. With New Jersey losing an average of 1,000 acres of farmland annually, how to save our farms is a critical question with a profound effect on the quality of life we enjoy here in the Garden State.

To retain our farms, we must not only preserve our land but promote a climate where agriculture can thrive. We need a coordinated strategy where agriculture and all levels of government work together to keep our farmland open, our farmers working the land and agriculture strong.

That is why the state Department of Agriculture developed a comprehensive Agricultural Smart Growth Plan. This plan provides the farming community and local county governments with guidance, information and tools to help accommodate growth while retaining a strong agricultural industry. At the same time, it promotes the protection of the state's most valuable natural resources, supports urban development and redevelopment, and encourages wiser use of the state's existing infrastructure.

Agriculture depends on a stable land base, so not surprisingly farmland preservation is a cornerstone of the Agricultural Smart Growth Plan. With increased funding made possible by the support of New Jersey voters, the state Farmland Preservation Program has stepped up preservation efforts. In 2003, a record 20,000 acres of New Jersey Farmland were preserved, meeting an ambitious goal set by Gov. McGreevey. At year's end, nearly 120,000 acres of farmland had been permanently preserved statewide. We also have undertaken a strategic targeting project in cooperation with counties to prioritize farmland preservation investments.

But we cannot retain our farms just by preserving the land. We also need to help NJ grow in ways that support agriculture; develop new economic development opportunities that enable farmers to be more successful; promote on-farm conservation practices, policies and programs that protect our soil and water; and educate and train the next generation of farmers.



These are all components of the Agricultural Smart Growth Plan. But the Department of Agriculture cannot carry out this plan on its own. The

commitment of municipalities, counties and other state agencies is key to the plan's success. Many towns, for example, want to stop growth completely. Some scramble to preserve any parcel of land slated for development. Others rezone open land – typically active farmland – to reduce the number of homes that are built and to limit infrastructure costs associated with residential development.

While large-lot zoning may reduce the number of homes that can be built, it spreads out homes in a way that consumes more land, with none of the remaining land suitable for agriculture. And because it reduces development potential, large-lot zoning devalues land and reduces a landowner's net worth – increasing pressure on farmers whose land is often their primary financial asset.

Instead, the Agricultural Smart Growth Plan promotes planning techniques that accommodate growth while consuming less land. Municipalities and counties with significant agricultural resources also can support agriculture by adopting local right-to-farm ordinances that are consistent with the state's model and incorporating agriculture into their economic development plans.

Agriculture has responsibilities under this plan, too. As consumer demands change, we must identify new markets and provide products consumers want. As stewards of the land, farmers must do their part to protect our soil and water. We must educate and train the next generation of farmers, provide a comprehensive, ongoing farm worker safety program, and secure housing and training opportunities for farm labor.

The Agricultural Smart Growth Plan set forth coordinated strategies that will enable us to save our farms, maintain the quality of life in our communities and position agriculture for a bright future. Although NJ's land base is finite, through our smart growth efforts we can ensure livable communities, maintain open spaces and forests that protect our natural resources, and retain farmland that supplies us with an abundance of fresh agricultural products. By achieving this balance, we maintain the best of our great Garden State.

Boxwood Farm in Manalapan 1,000th Farm to be Preserved

Rich Obal, - Excerpts from Asbury Park Press

The 256 farms enrolled in the Farmland Preservation Program last year included Boxwood Farm – on Iron Ore Road and home to 125 standardbred horses – in Manalapan where Governor McGreevey said during a press conference that the program has helped combat “the threats of traffic and sprawl.”

The preservation of Boxwood Farm made it the 1,000 preserved farm in New Jersey, Agricultural Secretary Charles Kuperus said. Under the Farmland Preservation Program, established in 1983, a total of 1,054 farms covering 120,115 acres have been preserved.

Boxwood Farm is one of 75 permanently preserved Monmouth County farms. Taylor Palmer Jr., owner of the Iron Ore Road farm, said he sold the development rites for 145 acres on December 11. The farm is within 2 miles of four other preserved farms and is adjacent to Green Acres – preserved open space. Boxwood’s main farmhouse dates from the mid-1700’s, Palmer said, and the farm is in New Jersey’s Crossroads of the American Revolution project area.

“We need farms. This is a way of life that makes a precious contribution to our state,” McGreevey said.

“Forever, people will be able to continue seeing



Press conference at Boxwood Farms with Ag Secretary Charles Kuperus, farm owner Taylor Palmer, Jr. and Governor Jim McGreevey - Photo Rich Obal

this beautiful farm as it is,” Manalapan mayor Beth Ward said.

“Mr. Palmer bought Boxwood in 1953 with his father and they farmed it. The family has continued to operate the farm,” said Kuperus. “It’s the family farms we want to help preserve.”

Congratulations and thanks to the entire Palmer Family for sharing this beautiful farmland with current and future generations of New Jersey residents.

At Rutgers laboratory, Profs try to debug fruit

Asbury Park Press - 3-18-04 A Day in the Life - Allentown & Upper Freehold

Behind every piece of fruit that makes it to the supermarket are hundreds of hours of research.

Tucked away off Route 539 on 200 acres, professors from Rutgers University try to figure out how to make apple trees more disease resistant. Make strawberries grow year round and how to curb populations of bugs that threaten the New Jersey farm industry. Professors also are studying ways to improve growing hazelnuts and apricots.

On a muddy afternoon, little work is being done on the fields. But once spring starts, Rutgers Fruit Research Extension will be bustling with activity, director Joe Goffreda says.

Most who work at the site are Rutgers’ professors doing research. Sometimes, graduate students work on projects here. In warmer weather, professors will bring their classes on field trips to the site, he says.

“It is difficult for NJ farmers to be competitive,”

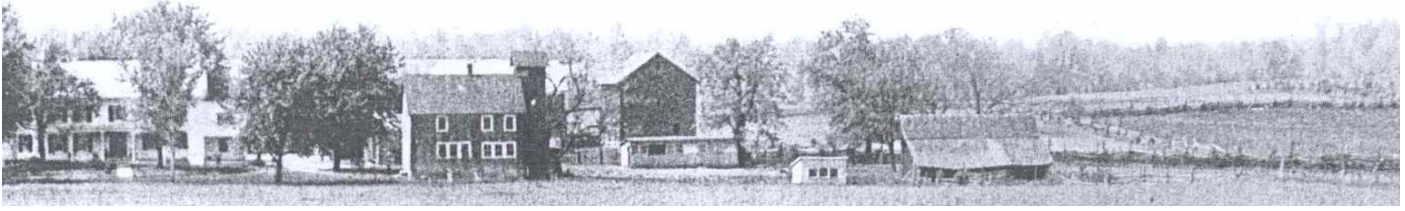


Joe Goffreda, director of the Rutgers extension station off Route 539 in Upper Freehold, inspects specimens of mostly peaches and apples. They are being developed to resist disease. (photo P. Ackerman - APP)

says Goffreda, associate professor at Rutgers University.

But at the fruit research center, professors work to find ways to help farmers compete. More than 100 varieties of different types of fruits were developed here, including doughnut-shaped peaches that were popular in supermarkets this past summer, he says. They are set apart by the low price.

“Through breeding methods, we can reduce costs,” Goffreda stated. Success doesn’t come without a lot of experimentation. At any given time, there are 30,000 different varieties of apples growing at the extension. “Plants are like children,” Goffreda says, “No two are alike.”



Remember When.....

Vivian Quinn & Marty Bullock

Marty Bullock, President of the Monmouth County Board of Ag, is the fifth generation in his family to operate the Bullock Farm. The 100-acre farm in Cream Ridge, Upper Freehold was purchased by the family in 1860. In the early days of ownership, alfalfa was the main crop grown. The building that was used to process cranberries from bogs owned in nearby Prospertown still stands. The Bullocks live in the original farmhouse where a few deeds dating back to 1835 were found tucked away in a draw. A photo from the early 1900's shows market hogs being raised on the farm. They raised hogs until the mid 50's. When Marty was 10 he remembers having 300-400 laying hens, but the farm was never a dairy, as were most other farms in Monmouth County.

Marty grew up on the farm and has always had a love for the land and agriculture. As teenagers, Marty and his brother Rick grew melons and tomatoes and sold them to roadside stands to make spending money. He related how the farm has gone full circle from growing grain and potatoes until the 60's, processing tomatoes from the 60's to 70's and back to all grain in the 70's.

Although grain was still a good cash crop, limited acreage for farming led the Bullock brothers to diversify their operation in order to survive. In 1985 they began planting Christmas trees for a cut-your-own operation, which would take five years to get going. Today their business consists of Christmas trees, some landscape ornamentals, 25 acres of pumpkins along with grain. In the fall, pumpkin picking and straw bales keep the Bullocks busy. The tree seekers start arriving immediately after Thanksgiving to pick out the best looking trees. The customers either chop their own tree or pick out a pre-cut one, often video-taping the experience. Janet and Linda Bullock run a craft shop

housed in the old cranberry processing building, which customers enjoy visiting after cutting their trees.

Looking back on the "good old days," Marty realizes that farmers worked a lot harder to accomplish their chores. Today farming is easier in some respects but more difficult due to sprawl and labor problems. Recalling some really bad years, extremely dry weather in 1955 and 1999 resulted in losses of 300-400 acres of corn. Fortunately, in 1999 government programs helped out.

Marty appreciates the assistance Rutgers Cooperative Extension gives growers, especially with crop diversification. He says, "New crops are a good idea but we especially need help finding new markets." In 1989 the Bullock Farm was one of the first to enter Farmland Preservation, now 1,000 farms strong. Whether any Bullock family members will continue to run the farm is uncertain, but Marty and his brother hope to semi-retire one day, growing Christmas trees on their land, happy knowing it will always remain as farmland.

Farm Computing Terms

- ✦ **Log On:** Making the wood stove hotter.
- ✦ **Log Off:** Don't add wood.
- ✦ **Monitor:** Keep an eye on the wood stove.
- ✦ **Download:** Getting the firewood off the pickup.
- ✦ **Mega Hertz:** When you're not careful downloading (watch the toes!)
- ✦ **Floppy Disk:** What you get from piling too much wood.
- ✦ **RAM:** The hydraulic thingy that makes the woodsplitter work.
- ✦ **Hard Drive:** Getting home in mud season.
- ✦ **Prompt:** What you wish the mail was in mud season
- ✦ **Windows:** What to shut when it's 30 below
- ✦ **Modem:** What you did to the hay fields.

This Targum newspaper article was found while renovating an old house in Highland Park.

Times have changed since this 1938 edition, but the event goes on.

Don't miss Ag Field Day 2004

Saturday, April 24 - Cook College Campus - www.cookcollege.rutgers.edu/afd

Targum

ESTABLISHED 1869

Double-Header

Lafayette

Neilson Field

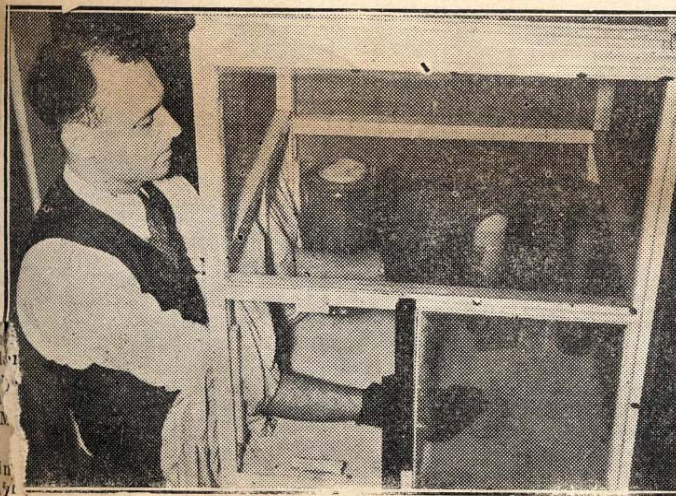
2 p.m.

New Brunswick, N. J., Saturday, May 7, 1938

FIVE CENTS

Premier Agriculture Field Day Expected To Draw 2,000 Guests; WOR To Broadcast Proceedings

Field Day for Mosquitoes, Too



Entomologist Philip Granett allows the insects to feed on his arm. He counts the stings in a stated period of time, all in the interests of

President Clothier Will Speak,
University Band Will Play
Over Mutual Network

Program Starts at 1 P. M.

Dr. Lipman Heads Male Team
In Super Milking Contest
With N. J. C. Maids

If the far-flung campus of the New Jersey College of Agriculture had a doormat, it would certainly bear the word "welcome." In every other respect, students are in readiness to extend a cordial greeting to Garden Staters today when they hold their first annual field day and open house. Described as "one of the most significant things in the history of the College of Agriculture," by Professor Frank G. Helyar, director of resident instruction at the college, the coming affair will provide an opportunity for non-agricultural students, faculty and the public to become more familiar with the education activities of the Ag School.

Milking Contest Featured

The afternoon's program will not be without many amusing events. There will be a milking contest in which Dr. Jacob G. Lipman, dean of the college; Dr. John W. Bartlett, professor of dairy husbandry; Mr. Henry Jeffers, of Walker-Gordon, and David Agans of the State Grange will take part. Although it is not definite, Governor A. Harry Moore is expected to judge the contest. There will also be milking contests for the coeds from New Jersey College for Women, the "Ags," and their professors.

Co-Ops on Display

The visitors will be taken on a tour to the home of the Alpha Phi-Phi Club, one of two cooperative student houses on the campus, where they will be given an intimate glimpse of what the "Ags" do when they are not studying and how, through cooperation and initiative, they are able to gain their education at a surprisingly low cost.

The Floriculture department, under the direction of Aaron Small, will show, among other things, flowers and corsages for milady to wear to

(Continued on page 4)

(Continued from page 1)

the Military Ball. There will be guides to show the visitors through the greenhouses.

All For Science

Another interesting part of the entomology exhibit is the test of mosquito repellants. The self-sacrificing scientist puts his arm in the cage and actually invites the insects to bite, meanwhile counting the stings in a stated period of time. While this procedure seems very amusing, it bears practical results for only last summer a series of outdoor concerts in Newark were made enjoyable to music lovers through the use of the New Jersey laticide, which was perfected at Rutgers and tested by this means.

Calendar

Cook College Continuing Professional Education Programs - A large selection of classes are offered. Call 732-932-8451 or online www.cookce.rutgers.edu

APRIL

April 1, ICM for Highbush Blueberries, Holiday Inn, Jamesburg - 732-932-9271

April 7, Soils and Fertilizers - RCE of Gloucester County, 1200 N. Delsea Dr. Clayton, NJ, cost. Pesticide recertification credits 2 each in 3A and PP2. Call 856-307-6450.

April 24, Ag Field Day - Cook College Campus

April 28, Weed Management - RCE Gloucester County

(see above for info) 3 each in 3A, 3B and PP2.

MAY

May 5, Tree and Small Fruits - RCE Gloucester County. 3 each in 3A and PP2. Call 856-307-6450.

May 7, Extension Round-up, Snyder Farm 908-730-9419

JULY

July 28 - Lawn and Landscape Research Field Day - Plant Science Research & Extension Farm, Adelphia, NJ 8 am -3:30 pm - Call 856-853-5973. See www.njturfgrass.org

July 29 - Golf and Fine Turf Research Field Day - Hort Farm II, North Brunswick, NJ 8:30 - 2:30. Call as above.

Monmouth County Board of Ag Meetings
7:30 PM - March 16, April 20, May 18, June 15

Basic Pesticide Training 9 AM - 1 PM

Apr. 14, May 11, June 2

To register call 800-524-9942

Held at

**Rutgers Cooperative Extension,
20 Court St., Freehold, NJ 07728
732-431-7260**

**Rutgers Extension On-line Learning Center for
Pesticide Use and Storage**

DEP credits on line

**[www.ifplantscouldtalk.rutgers.edu/
pesticide_education](http://www.ifplantscouldtalk.rutgers.edu/pesticide_education)**



2004 Achievement Award winner Wickie Hom and his wife Anita at the Annual Monmouth County BOA Dinner. See <http://www.visitmonmouth.com/07050coopext/MonmouthBoard.asp>

RUTGERS COOPERATIVE EXTENSION OF MONMOUTH COUNTY

New Jersey Agricultural Experiment Station

20 Court St, Freehold, NJ 07728
Agriculture: 732-431-7260
Family & Consumer Science: 732-431-7271
4-H: 732-431-7263;7264
Fax: 732-409-4813

Rutgers Cooperative Extension— Agriculture, Family and Consumer Sciences, 4-H Youth Development, Resource Management, and Marine Studies— welcomes this opportunity to send you the enclosed materials for your information and use.
Educational programs and information are provided to all people without regard to sex, race, , national origin, or handicap

Richard G. Obal, County Agricultural Agent
Extension Dept. Head

Bill Sciarappa, County Agricultural Agent

*Changing Times is produced and edited by Bill Sciarappa and Vivian Quinn - sciarappa@aesop.rutgers.edu
Look for our next issue Summer 2004*

(Continued from page 1)

“To summarize, during the four years we served George and I have dealt with more changes to the Department of Ag and government than ever before.” The Board is working well with the Secretary to carry out the revised strategic plans. Working groups were formed to help find solutions to the major problems of the farm industry. The Smart Growth Group has developed the Ag Smart Growth Policies, the Water Allocation Group has worked to find solutions for farm irrigation both now and in the future, and the Economic Development Group has provided strategies for new and innovative marketing programs, new products and resources.

Along with the Dept of Ag and Rutgers University Extension working to keep New Jersey Green and Growing, the farming community must get involved locally because that is where changes occur. Dr. Dey urged delegates to become involved on a municipal level by attending Planning Board meetings and hearings and joining local boards. This is where farmers can express their concerns and ensure agriculture will remain strong. The key to survival in these changing times is for farmers to change to

meet the demands of our times. Dr. Dey then introduced Secretary Charles Kuperus whose speech made one believe that New Jersey will always be the “Garden State.”

On the second day, delegates attended various “Farmer’s Institute” workshops, hosted by agribusiness professionals, Cook College faculty and agency staff. Topics ranged from marketing strategies to organic agriculture to pesticide application. On Tuesday Governor McGreevey and USDA Administrator, James Little signed a \$100 million agreement establishing the Conservation Reserve Enhancement Program (CREP); a federal/state partnership program designed to help farmers protect the state’s waterways. This agreement established a special funding pool to cost share the ecological restoration and preservation of stream banks to filter pollutants and sediments that run off farmland. On the last day, the delegate body adopted the 2004 resolutions, which addressed important agricultural issues including land equity, agricultural water, farm safety and security, open burning, and New Jersey’s equine industry. Hopefully these significant developments will add institutional strength in a time of individual struggle.

FFA Comes to Cook College

Future Farmers of America (FFA) is a national educational organization preparing young people for leadership and careers in agriculture. This year the National FFA celebrates its 75th anniversary, even older, the 79th annual New Jersey Future Farmers of America Fall Interscholastic Career Development Event was held in November 2003 in cooperation with the NJ Department of Education and Cook College. Almost 200 students from 22 FFA chapters all over NJ participated in land

judging, soils evaluation, animal science and plant science events. Ninety students participated in the Fruits and Vegetables Event which was coordinated by Ag Agent Bill Sciarappa. The educational event is always an enjoyable, fun and learning experience for students. This year was no exception as the students proudly wore their Blue and Gold FFA jackets and did an amazing job identifying and judging fruits and vegetables. Congratulations Allentown for coming in first place and congratulations teachers for the superb job in preparing the students for this event.



L - FFA officer, FFA Program Leader Nancy Trivette and County Agent Bill Sciarappa
R - Students participate in vegetable identification event