

# Monmouth County 4-H

## Animal Project Event Details and Health Requirements

By: J. Ruggiero and A. Valente 2019  
Adapted from: NEW JERSEY 4-H YOUTH DEVELOPMENT PROGRAM  
POLICIES/RULES AT A GLANCE - 4-H ANIMAL SCIENCE PROJECTS  
D. Cole 2017

In this document you will find...

- ❖ An overview of registration and health requirements for 4-H animal projects
- ❖ Due dates for animal registration forms, health forms, and other requirements.
- ❖ An overview for County level 4-H animal project events and shows.
- ❖ An overview for State level 4-H animal project events and shows.

Why register animals and submit health forms: If you are planning to use your project animal(s) for any 4-H event that takes place throughout the current 4-H program year. This includes club meetings, outreach programs, educational events, shows, fairs, etc. Animals not leaving their place of residence do not have to be registered nor do health forms need to be submitted.

**PLEASE NOTE: Animal Registration forms are not event entry forms.**

Due Dates: Animal registration begins at the start of the 4-H program year in September. All members will have until the due dates to submit forms. Below are the due dates set by NJ State 4-H. These dates never change annually. Should a due date fall on a weekend for a particular year, then the due date will be pushed to the following Monday. New 4-H members joining after these due dates will not be able to register animal(s) until September.

**PLEASE NOTE: Once the due date has passed, absolutely no forms will be accepted.**

- April 1: Horse Registration form due to the Monmouth County 4-H office.
- April 1: Canine Health and Registration form due to the Monmouth County 4-H office.
- April 1: Horse Lease/Borrow form due to the Monmouth County 4-H office.
- May 1: All Non-Horse Animal Registration form, health form, and permits are due to the Monmouth County 4-H office.
- May 20: Horse health form with requirements due to the Monmouth County 4-H office.

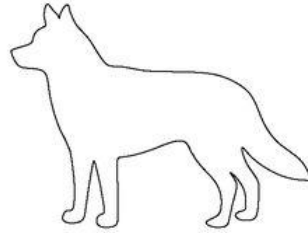
Member in Good Standing criteria: within the 4-H program year (Sept-August)

Enrolled members must be a member in good standing to participate in any 4-H event.

- Youth must be registered in the 4Honline system or reenrolled as of Jan. 1<sup>st</sup>
- Youth must submit a 4-H record book to the Monmouth County 4-H office.
- Youth must attend a minimum of 70% of club meetings.
- Youth must give a public presentation at the club level.
- Youth must participate in a 4-H community service project at club, county, regional or state level.

Animal Science Resource Blog: This blog was created to connect 4-H members, volunteers, parents, and staff to important resources needed to support STEM (Science, Technology, Engineering, and Mathematics) learning within their 4-H clubs. Collaborating experts throughout NJ create and share content through this blog. <https://4hanimalscience.rutgers.edu/>

# **CANINE PROJECT**



**REGISTRATION:** Submit an Animal Registration form to the Monmouth County 4-H office by April 1. Registration includes required colored wallet sized photo of animal and lease/borrow form if applicable. Forms can be found at the end of this packet.

*\*Note- there is currently no active 4-H canine club in Monmouth County 4-H, but 4-H members participating in a local canine group may participate in the offered programs below.*

**HEALTH:** All canines must be current on health requirements and present proof of vaccinations. A vaccine record is due to the Monmouth County 4-H office by April 1 for:

- Canine distemper, parvovirus, hepatitis, and rabies\*  
*\*Rabies under NJ Animal Health policies can only be administered by an accredited veterinarian.*
- All canines are subject to a visual health inspection by the designated health inspector prior to an event - no exceptions.

## **MEMBERSHIP:**

- Cloverbuds: Youth Grades K-3
- Senior division: Youth grades 9-13
- Junior division: Youth grades 4-8

## **NJ STATE 4-H DOG SHOW:**

- No Cloverbud Division in this state 4-H competitive event.

Novice: Have not won three (3) first place awards.

Open: Have won three (3) first place awards.

Master: Have won ten (10) first place awards.

“PN-A” Pre Novice A: both dog and handler are inexperienced

“PN-B” Pre-Novice B: either dog or handler have experience.

“BN” = Beginner Novice (AKC)

“IN” = Intermediate Novice (4H)

“NOV” = Novice (AKC)

“AN” = Advanced Novice (4H)

“GN” = Graduate Novice (AKC)

Obedience classes are based on experience level of dog and/or handler.

Rally classes are based on experience levels- on lead, off lead.

Agility classes are based on experience levels and dog’s height at withers (tallest point of body at ridge between shoulder blades).

Showmanship classes are based on member’s grade and experience level

## **CANINE PROJECT CONT.**

### **DOG BOWL:**

- Open to Junior, Senior, and Cloverbuds.
- Cloverbuds are welcome to participate but are not judged.

### **ATTIRE:**

- Showmanship- dress slacks or skirt. Blouse, turtle neck, sweater, or vest. Tie or jacket optional
- Obedience/Agility- dress slacks or colored denim jeans with dress blouse, shirt, turtle neck, sweater, or vest.

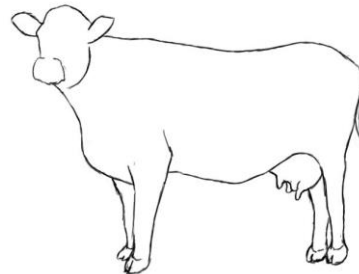
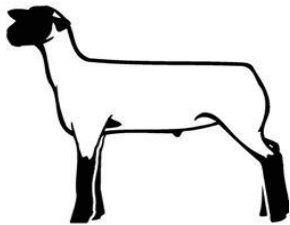
### **K-9 ART SHOW:**

- The K-9 art show is held in conjunction with the NJ 4-H Dog Show (which is held each year at Rutgers Day in April).
- The show is open to any 4-H Club member, grades 4-13.
- No Cloverbud division in this state event.

### **ENTRIES:**

- Open to ALL registered 4-H members- not limited to just 4-H canine members.
- A 4-H member does NOT need to be a participant NJ State 4-H Dog Show or Dog Bowl to enter the K-9 Arts Show.
- All entries must relate to a dog theme and must be original works (no kits).
- Limit two (2) entries per category.
- An entry card must be attached to each entry.
- Categories - Photography, Creative Writing, Visual Art, Craft, Film, Performing Arts

## **LIVESTOCK PROJECT**



**REGISTRATION:** Submit an Animal Registration form to the Monmouth County 4-H office by May 1. Registration includes Ear Tag # as well as, lease/borrow form if applicable. Forms can be found at the end of this packet.

### **MEMBERSHIP:**

- Cloverbuds: Youth Grades K-3
- Senior division: Youth grades 9-13
- Junior division: Youth grades 4-8

## **LIVESTOCK PROJECT CONT.**

**HEALTH:** All animals entering a show must have a valid Certificate of Veterinary Inspection (CVI) or Animal Health Certificate (AHC) signed by an accredited veterinarian. Certificates should indicate that the animal did not originate from a herd with foot rot, sore mouth, or any infectious or contagious disease. Please bring this document with you, do not submit to Monmouth County 4-H office. Note: These documents are only good for 30 days before the event occurs.

- Sheep and Goats are required to be identified by USDA approved official identification except wethers.  
(<https://www.aphis.usda.gov/aphis/ourfocus/animalhealth/nvap/NVAP-Reference-Guide//Animal-Identification/Sheep-and-Goat-Identification>)
- All livestock are subject to a visual health inspection by the designated health inspector prior to an event - no exceptions.

### **GENERAL:**

- Intact males over the age of 3 months are not permitted as exhibition animals - only females and castrated males. *Exception:* Rams are permitted as exhibition animals.
- Horned animals -Dairy goats must be polled. Meat/Fiber/Companion goats are permitted.

### **GOAT EXTRAVAGANZA**

The NJ 4-H Goat Extravaganza is a statewide event for members, parents, and volunteers. The day's activities include a mixed-county team poster-presentation contest, eight-station skill-a-thon, team quiz bowl contest, goat-themed art show, ice cream social, and awards ceremony. There will also be a morning workshop for the adult participants.

- Open to ALL registered 4-H members- not limited to just 4-H goat project members.
- Open to Junior, Senior, and Cloverbuds. Cloverbuds are welcome to participate but are not judged.

### **VIDEO CONTEST & FILM FESTIVAL**

Youth working individually or as a team to create educational videos about horses, sheep, goats, poultry, rabbits, dairy/beef cattle, and swine may enter the NJ 4-H Animal Science Video Contest. A selection of videos will be shared at the film festival during an afternoon session of the Junior Breeder Livestock Symposium. The top scoring videos will receive awards. Videos will be scored on educational value, creativity, clarity, pacing, and technical quality (sound, lighting, etc.). Youth are encouraged to have fun and be creative in designing their video entries!

- Open to ALL registered 4-H members- not limited to just 4-H livestock project members.
- To participate in the film festival, member must register for the Junior Breeder Livestock Symposium held in March.
- Videos must be 3:30 minutes or less and educational
- Videos must be uploaded for submission - this is usually 3-4 weeks prior to the Livestock Symposium.
- Any/all individuals appearing in video entries must complete a media release.

# **LIVESTOCK PROJECT CONT.**

## **NJ STATE 4-H GOAT SHOW**

- Must be registered with a 4-H goat project and completed grades 4-13.
- No Cloverbud Division in this state 4-H competitive event.
- Members must have exhibited at least one project animal in their county 4-H Fair to exhibit at the State 4-H Show.
- Only showmanship classes are conducted based on members' grades - all other classes go by age of project animal.
- Horned animals are only permitted in Fiber, Meat, and Companion Goats classes.

### **The Following breeds/classifications will be judged:**

- Standard Dairy Breeds (shown together): Alpine, La Mancha, Nubian, Oberhasli, Saanen, and Toggenburg.
- Nigerian Dwarf - recorded & unrecorded grades
- Fiber goats (does & wethers) - Angora, Cashmere
- Meat Goats (market: wethers or does; breeding: does only) - Boer, Boer Cross, Myotonic, Savannah, Kiko, and others
- Companion Goats (does & wethers) - Miniature Silky Fainting, Pygmy, Dairy wethers, others.
- Dairy does over 24 months & never freshened.

### **Showing Key Point**

- An exhibitor must participate in a Showmanship Class.
  - Exception: member attending school classes at time of show (no other extra-curricular activities apply). In this case, only one project animal may be exhibited by another eligible project member.
- Attire:
  - White clothing is standard for dairy goat showing.
  - Dark pants may be worn by those showing fiber, meat, and/or companion animals.

### **OTHER EVENTS:**

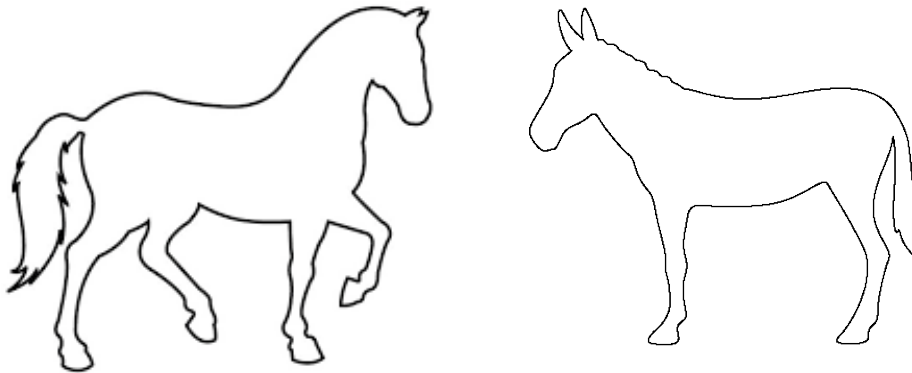
- ❖ Model Horse Show/Equine Art Show (Monmouth County 4-h- Ag Building, Fall) (NJ State 4-H- Rutgers, Winter)
- ❖ Monmouth County 4-H Animal Academy (Ag Building, Winter)
- ❖ Monmouth County 4-H Horse Shows 101 (Ricks Saddle Shop, Spring)
- ❖ Monmouth County 4-H Livestock Expo (Thompson Park, Spring)
- ❖ Junior Breeders Livestock Symposium (Rutgers, Spring)- see further details in Livestock Project.
- ❖ NJ State 4-H K-9 Art Show (Rutgers, Spring)
- ❖ Monmouth County Small Animal Art Show (Allentown, Spring)

## **LIVESTOCK PROJECT CONT.**

### **Junior Breeder Livestock Symposium**

An educational symposium for adults and children is held each year at Rutgers University's Cook Campus in March. A wide variety of valuable and interesting agricultural topics will be discussed and there will be many opportunities for hands-on experience. Sessions covering a variety of topics will be offered such as equine show grooming and showmanship, dairy and swine breeding, animal health, poultry housing and rules, animal nutrition, and much more. This event is run through the Dept. of Ag and is open to the public.

## **EQUINE PROJECT**



**REGISTRATION:** Submit a Horse Registration form to the Monmouth County 4-H office by April 1. Registration includes required colored wallet sized photo of animal and applicable lease/borrow form. Forms can be found at the end of this packet.

**HEALTH:** All equines are to have a Negative Coggins within 12 months of the NJ State 4-H Horse Show (held in August). Two colored copies of the coggins are to be submitted to the Monmouth County 4-H office by May 20. No emailed copies or copies displayed on your phone will be accepted. No black and white copies accepted.

All equines are to submit a 4-H Horse Health Form with the following vaccinations\*:

- Eastern Encephalitis vaccination (12mo.)\*
- Tetanus vaccination (12mo.)\*
- Rabies vaccination (12mo.)\*
- West Nile Virus vaccination (12mo.)\*
- Equine Influenza vaccination (6mo.)\*
- Equine Herpesvirus (or rhinopneumonitis) (6mo.)\*

**\*Note- all of the above vaccinations must be within the indicated months from the NJ State 4-H Horse Show, which is held each year in August.**

- All equines are subject to a visual health inspection by the designated health inspector prior to an event - no exceptions.
- **FAIR:** If you are planning to exhibit your equine in a stall throughout the Monmouth County Fair, you must also email the equines vaccine record to the Monmouth County 4-H office by **7/19/19**. Most veterinarians will directly email this.

## **EQUINE PROJECT CONT.**

### **GENERAL:**

- All breeds of horses, ponies, donkeys, mules, and VSE are eligible for use as a project animal.
- No stallions (non-castrated males) are permitted as exhibit animals.

**Age of horse projects:** a horse becomes a year older on January 1st of the current year (not on its actual birth date)

- Horse projects must be at least 4 years of age to compete in mounted classes.
- Very Small Equines (VSE) must be 3 years old for In-Hand Jumping and In-Hand Trail classes.
- Younger animals may participate in Grooming & Showmanship and Halter classes.

### **Equine height:**

- Horses are defined as exceeding 14.2 hands
- Ponies are 14.2 hands and under (Large - over 13.2 hands to 14.2 hands; Medium - over 12.2 hands to 13.2 hands; Small - 12.2 hands and under)
- VSE - 39" or less
- All equines 15.0 hands and under must be measured at the county qualifying show annually up to (and including) their 6th year of age. A permanent card is given to the equine at age 7.

### **MEMBERSHIP:**

- Cloverbuds: Youth Grades K-3
- Senior division: Youth grades 9-13
- Junior division: Youth grades 4-8

### **MONMOUTH COUNTY 4-H MODEL HORSE SHOW AND EQUINE ART SHOW**

The 4-H Model Horse Project entails the collecting, photographing and showing of model horses. This sincere hobby inspires 4-H'ers to pursue perfection, authenticity and artistry. The world of model horses is interesting, fun, and informative. An equine art show is additionally held, which features equine themed work of the 4-H member in a variety of mediums.

- Open to ALL registered 4-H members- not limited to just 4-H equine members.
- Cloverbud classes are offered at this show, including a Cloverbud activity corner.
- Senior division: Youth grades 8-13 *\*Please note: different than other equine age divisions*
- Junior division: Youth grades 4-7 *\*Please note: different than other equine age divisions*

### **NJ 4-H STATE MODEL HORSE SHOW AND EQUINE ART SHOW**

- No Cloverbud Division in this state 4-H competitive event.
- Senior division: Youth grades 8-13 *\*Please note: different than other equine age divisions*
- Junior division: Youth grades 4-7 *\*Please note: different than other equine age divisions*

## **EQUINE PROJECT CONT.**

### **Model Horse Show Class Details:**

- Performance Class – maximum 2 entries/exhibitor. Halter Class – maximum 3 entries/exhibitor
- Each model must have an entry tag fastened to a hind leg that cannot be easily removed. String tag should be used, and filed out:
  - Front of Tag: Name of Horse, Breed, Sex
  - Back of Tag: Exhibitor Number (Numbers will be e-mailed to members after entries are received or upon registration on show day)
- It is expected that the exhibitor (owner of the model) be available to manage the model and take it to the judging table. Adults are not permitted to assist in tacking or set-up of horses. Exhibitors may be assisted by other 4-H members only.
- A single model may show in more than one performance class. The same model may not cross enter in the junior and senior member divisions.
- A guide on how to show model horses can be found at:  
<http://nj4h.rutgers.edu/horses/modelhorseshow/How-to-Show-Model-Horses.pdf>

### **NJ STATE 4-H HORSE BOWL**

4-H Horsebowl is a quiz bowl contest. Contestants are asked questions which have been assigned a point value. Contestants use buzzers to be recognized to respond. By studying for the contest, 4-H members gain knowledge about animal science and horsemanship.

- Open to all registered 4-H members enrolled in a 4-H Horse Science Study Team.
- No Cloverbud Division in this state 4-H competitive event.
- A team consists of a minimum of three (3) to a maximum of four (4) contestants. Individual competitors will be combined randomly with unfilled teams.
- Each team must have an adult coach and team captain
- Counties sending team(s) must also send two (2) additional volunteers to help during the contest
- **ATTIRE:** All contestants and coaches are expected to dress in tan pants and their team shirt. Pants may be slacks or riding pants. Closed-toed shoes (no sneakers, clogs, or sandals) must be worn. No T-shirts or shorts.
- *The Monmouth County 4-H Horse Advisory provides funding to the member(s) that attend this event.*

### **Horse bowl Playing Rooms**

- Entry into the playing rooms may only take place between matches and rounds.
- Once any spectator (parent, coach, leader, visitor, 4-H'er) has entered a playing room, they must remain until the match is completed.
- Once competition begins, team members will have no contact with any adults other than the assigned chaperones and contest officials.
- Cell phones, tape recorders, or any other electronic devices including music players and games will not be allowed in the study rooms or in the possession of any participant on the day of the Contest.

## **EQUINE PROJECT CONT.**

### **NJ STATE 4-H EQUINE PRESENTATIONS**

4-H Equine Presentations is a state level 4-H public speaking competition. 4-H'ers gain self-confidence and speaking abilities that are valuable in life situations.

- Open to all registered 4-H members enrolled in a 4-H Horse Science Study Team.
- No Cloverbud Division in this state 4-H competitive event.
- Senior division: Youth grades 9-13
- Junior division: Youth grades 4-8
- Three (3) categories to participate (member/team must select only one to enter):
  - Team Demonstration/Presentation
  - Individual Demonstration/Presentation
  - Public Speaking (Formal Speech- no notecards)
- *The Monmouth County 4-H Horse Advisory provides funding to the member(s) that attend this event.*

### **HIPPOLOGY**

4-H Hippology combines horse judging, the technical knowledge learned in horse bowl, and the practical application of various horse related skills. 4-H members put their knowledge to use as they complete an examination phase, a station phase that includes identifying horse-related items, a judging phase, and a team problems phase that emphasizes teamwork and planning.

- Open to all registered 4-H members enrolled in a 4-H Horse Science Study Team.
- No Cloverbud Division in this state 4-H competitive event.
- Senior division: Youth grades 9-13
- Junior division: Youth grades 4-8
- Counties may send an unlimited number of teams consisting of no more than four (4) members. Counties with more than four (4) members must make as many complete teams of four (4) as possible - extras will be combined with other counties.
- Counties sending team(s) must also send one chaperone and a minimum of five (5) additional Volunteers to help during contest.
- **ATTIRE:** All contestants and coaches are expected to dress and act like professional judges both days of the event. Hard-toed shoes (no sneakers, clogs, or sandals) must be worn during Phase C (Judging) of the competition. Suggested attire is: skirt or slacks, blouse or shirt, blazer or sweater. No T-shirts or shorts.
- There are four (4) phases to the contest: Examination; Stations; Judging; and Team Problem
- A guide about the contest and how to prepares can be found at <http://4h.rutgers.edu/horses/hippology/about.asp>.
- *The Monmouth County 4-H Horse Advisory provides funding to the member(s) that attend this event.*

## **EQUINE PROJECT CONT.**

### **NJ STATE 4-H HORSE JUDGING**

In 4-H Horse Judging, 4-H members make a careful study of animals measuring them individually against a commonly accepted ideal. 4-H members learn to look at a group of four horses (a class) and compare the balance and type, as well as the correctness of the structures of the horses. 4-H members also give oral reasons for why they rated the classes the way they did. 4-H members who participate in horse judging become keen observers, poised and confident speakers, and learn that doing their best is a positive contribution to the team.

- Open to all registered 4-H members enrolled in a 4-H Horse Science Study Team.
- No Cloverbud Division in this state 4-H competitive event.
- Senior division: Youth grades 9-13
- Junior division: Youth grades 4-8
- Counties may send an unlimited number of teams consisting of not more than four (4) members.
- Counties with more than four (4) members must make as many complete teams of four (4) as possible - extras will be combined with other counties.
- Counties sending team(s) must also send one chaperone and a minimum of five (5) additional volunteers to help during the contest.
- **ATTIRE:** Contestants and coaches must be appropriately attired in clean and neat clothing. Contestants are judges so they should dress and behave as a professional judge. Suggested attire is: skirt or slacks, blouse or shirt, blazer or sweater. Hard-soled shoes are mandatory.
- No sneakers, clogs, sandals, t-shirts, shorts, or jeans.
- Changing of clothes between the “Placing Phase” and the “Reasons Phase” of the contest will not be allowed. What a contestant wears to judge is what they will wear when giving reasons.
- Judging includes halter and performance non-reason and oral reason classes
- Halter classes will be judged as sound of limb, eye, wind, and mouth and selected from
  - Stock-type, Hunter-type, and Saddle Horse-type
- Performance classes will be judged as seen and chosen from Western Pleasure, English Pleasure, Saddlebred 5 or 3 Gaited and Country English Pleasure, Hunter Under Saddle,
  - Hunter Hack, Western Riding, Reining, Plantation English Pleasure, Walking Horse, Pleasure Driving, Showmanship, Western Seat, Hunt Seat, Saddle Seat Equitation, Yearling Lounge Line, and Ranch Riding.
- A guide about the contest and how to prepare can be found at:  
<http://nj4h.rutgers.edu/horses/horsejudging/2017-hippo-horsejudging-info-paacket.pdf>.
- *The Monmouth County 4-H Horse Advisory provides funding to the member(s) that attend this event.*

## **EQUINE PROJECT CONT.**

### **EASTERN STATE NATIONAL 4-H ROUND UP**

#### **(A collaboration of Horse Bowl, Equine Presentations, Hippology, and Horse Judging)**

The Eastern National 4-H Horse Roundup provides a place for youth to compete nationally while encouraging teamwork and self-confidence. To be eligible for the NJ 4-H State Team competing at the Eastern National 4-H Round Up Contest, youth will be selected. Selection is made from those who do well in the state contests and who commit to working with the State 4-H Coach for the summer in preparation for the contest. Contestants must have competed at the senior level. Further information can be found at <http://www.4hroundup.com/home>

- Junior members who are 14 years old as of January 1 of the event year are eligible to compete.

### **COUNTY 4-H QUALIFYING HORSE SHOW(S) FOR NJ 4-H STATE HORSE SHOW**

The 4-H qualifying horse shows are held to determine the 4-H members who will compete at the NJ State 4-H Horse Show. Each county is assigned a number of riders that can qualify per class at the state show. Monmouth County is permitted three (3) riders to qualify per class. Monmouth County 4-H is part of the Tri-County Qualifying 4-H Show Circuit, which includes Monmouth, Mercer, and Middlesex 4-H Counties. These three counties collaborate together to plan the qualifying shows. Qualifying shows must follow all rules, requirements, and class criteria as written in the NJ State 4-H Championship Rulebook - no exceptions.

- Open to all registered 4-H members enrolled in a 4-H Horse project.
- No Cloverbud Division in this 4-H competitive event.
- Senior division: Youth grades 9-13
- Junior division: Youth grades 4-8.

#### **Tri-County Qualifying Luncheon**

- A special luncheon is held to recognize all 4-H participants who have shown in Tri-County the previous year. This luncheon takes place in the winter.

### **NJ STATE 4-H CHAMPION HORSE SHOW**

The New Jersey State 4-H Championship Horse Show is held in August of each year. Each class in the show will consist of exhibitors who have qualified. Divisions at the state show include Western, English, Games, Driving, and Dressage. Other events that are held at the state show include the 4-H Youth Art Show, 4-H Drill Team Exhibition, and the Horse Costume Class. This three day event offers 4-H youth the opportunity to compete at an advanced level and meet other 4-H horse project members from around the state.

- Open to all registered 4-H members enrolled in a 4-H Horse project.
- No Cloverbud Division in this state 4-H competitive event.
- Senior division: Youth grades 9-13
- Junior division: Youth grades 4-8

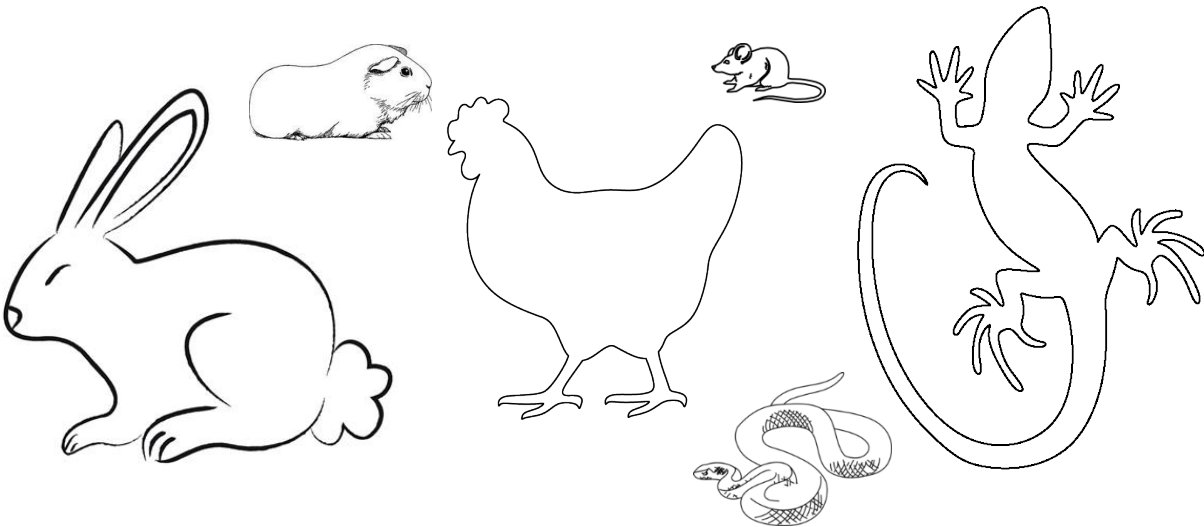
## **EQUINE PROJECT CONT.**

### **OTHER EVENTS:**

- ❖ Monmouth County 4-H Animal Academy (Ag Building, Winter)
- ❖ NJ State 4-H Goat Extravaganza (Hunterdon County, Winter)
- ❖ Monmouth County 4-H Horse Shows 101 (Ricks Saddle Shop, Spring)
- ❖ Monmouth County 4-H Livestock Expo (Thompson Park, Spring)
- ❖ Junior Breeders Livestock Symposium (Rutgers, Spring)- see further details in Livestock Project.
- ❖ NJ State 4-H Animal Video Contest and Film Festival (Rutgers, spring)
- ❖ NJ State 4-H K-9 Art Show (Rutgers, Spring)
- ❖ Monmouth County Small Animal Art Show (Allentown, Spring)

## **SMALL ANIMAL PROJECT**

***(Rabbits, Cavy, Small Animal, Herpetology, and Poultry)***



**REGISTRATION:** Submit an Animal Registration form to the Monmouth County 4-H office by May 1. Registration includes a lease/borrow form if applicable. Forms can be found at the end of this packet. All animals will be identified by the following:

- **Rabbits-** Legibly tattooed in left ear, or wallet sized colored photo.
- **Cavies-** May be ear tattooed in left ear, or wallet sized colored photo.
- **Small Animals-** Wallet sized colored photo. *(Any exotic small animal that requires a permit, must submit a copy to the Monmouth County 4-H office).*
- **Herpetology-** Wallet sized colored photo. *(Any animal that requires a permit, must submit a copy to the Monmouth County 4-H office).*
- **Poultry-** Leg band number or wallet sized colored photo.

## **SMALL ANIMAL PROJECT CONT.**

**HEALTH:** All animals must have appropriate health form completed and signed by May 1.

- **Rabbit/Cavy/Small Animal/Poultry-** NJ 4-H Health Form\*.  
\*Please note: the NJ 4-H health form is only required if showing at the NJ 4-H State Small Animal Show.
- **Herpetology-** NJ 4-H Herpetology Health Form\*  
\*Please note: the NJ 4-H health form is only required if showing at the NJ 4-H State Small Animal Show.
- **Poultry-** Must originate from a Pollorum-free flock and have a Pollorum-Typhoid test within 90 days of the show/event. Pollorum testing is available through 4-H office.
- All Small Animals are subject to a visual health inspection by the designated health inspector prior to an event - no exceptions.

**EXOTICS-**To find out if your project animal is in need for a permit, visit [https://www.state.nj.us/dep/fgw/exotic\\_apps.htm](https://www.state.nj.us/dep/fgw/exotic_apps.htm)

- ❖ **It is very important to contact the Monmouth County 4-H office if you have an exotic animal and are unsure what health/permit requirements are required.**
- ❖ **Please make sure to contact the 4-H office by January regarding this.**
- ❖ **Exotics may include Reptiles, Amphibians, Arthropods, Crustaceans, Ferrets, Sugar Gliders, Skunks, etc.**

### Membership

- **Cloverbud Division:** Youth grades K-3
- **Senior Division:** Youth grades 8-13
- **Junior Division:** Youth grades 4-7

	<b>FEMALE</b>	<b>MALE</b>	<b>JUNIOR</b>	<b>INTERMEDIATE</b>	<b>SENIOR</b>
Rabbit	Doe	Buck	3 to 6 months	6 to 8 months	6 or 8 months and older
Cavy	Sow	Boar	Up to 4 months 12-22 ounces	Up to 6 months 22-32 ounces	Over 6 months 32 ounces
Small Animal	Female	Male	N/A	N/A	N/A
Herpetology	Female	Male	N/A	N/A	N/A

### NJ STATE 4-H SMALL ANIMAL SYMPOSIUM

This one-day event will provide an opportunity for 4-H members to learn about rabbit, cavy, small animal, herpetology and poultry 4-H'ers participate in a variety of educational events all in one day. Activities and events planned include: rabbit hopping contest, art show, avian bowl, animalology quiz bowl, skill-a-thon stations, reptile workshop, and poultry, rabbit showmanship workshops, and more!

- Open to ALL registered 4-H members- not limited to just 4-H small animal members.
- Participants eligible to attend are in grades 3<sup>rd</sup>-13<sup>th</sup>\*  
\*Please note- only 3<sup>rd</sup> grade Cloverbuds may attend
- A Small Animal Art Show will also be featured.

## **SMALL ANIMAL PROJECT CONT.**

### **MONMOUTH COUNTY 4-H SMALL ANIMAL SHOW**

This county show takes place each year in the Spring. 4-H members raising rabbits, cavies, small animals, and herpetology exhibit their project animals at this county show. In order to compete at the State Level Show, you must first attend a county level show. Aside from showing- Showmanship, Breed ID contest, Costume Contest, and a Small Animal Themed Art Show are also provided.

- Open to all registered 4-H members enrolled in a 4-H small animal project. .
- Cloverbud classes are offered at this show, including a Cloverbud activity corner.

### **SHOWMANSHIP**

#### **Beginner Showmanship (cannot enter any other showmanship division)**

Grades 4 - 6	1st year participating in showmanship
Grades 7 - 8	1st year participating in showmanship
Grades 9 - 13	1st year participating in showmanship

#### **Intermediate Showmanship (cannot enter any other showmanship division)**

Grades 5 – 6	1st or 2nd year participating in showmanship
Grades 7 - 8	1st or 2nd year participating in showmanship
Grades 9 – 13	1st or 2nd year participating in showmanship

#### **Advanced Showmanship (cannot enter any other showmanship division)**

Grades 6 – 8	3 or more years of participating in showmanship
Grades 9-13	3 or more years of participating in showmanship

### **ATTIRE:**

- White collar shirt or blouse.
- Dark slacks or skirt with closed toed shoes.

### **NJ 4-H STATE SMALL ANIMAL SHOW**

This event takes place in September. 4-H members raising rabbits, cavies, mice, and other small animals exhibit their project animals at the annual State 4-H Rabbit, Cavy, Small Animal, Herpetology, and Poultry Show. A majority of small animal shows and classes are based on the animal's age, not the members' with the exception of Showmanship classes.

- Must be registered with a 4-H small animal project and completed grades 4-13.
- No Cloverbud Division in this state 4-H competitive event.
- Members must have exhibited at least one project animal in their county 4-H Fair to exhibit at the State 4-H Show.

### **Showing Key Points**

- Exhibitors must be present at judging. Another 4-H member may present an animal(s) for judging if the exhibitor is being judged in another area.
- This is a carrying cage show- all cages must have solid bottoms and adequate for size and/or number of animals.
- Exhibitors are responsible for own animals- grooming, equipment, carrying to and from tables, etc.
- There are no doe and litter. Sow and litter, or hen and chick classes for this show.

## **SMALL ANIMAL PROJECT CONT.**

### **NJ STATE 4-H AVIAN BOWL**

- The 4-H Avian Bowl is a double elimination contest for teams patterned after other knowledge bowls. Teams consist of 2-4 members per team for both the junior and senior divisions. Contestants must have a comprehensive knowledge of subject matter for several species of poultry, food safety, physiology, nutrition, eggs, and other related subjects.
- State Qualifier- there is a written exam for teams competing and elimination rounds.
- The results of the double elimination contest between the senior teams will determine the members selected to attend the National 4-H Poultry and Egg Conference in Louisville, Kentucky to compete in the 4-H Avian Bowl.
- Study guide- National 4-H Avian Bowl Manual must be purchased from Clemson University and available at <http://shopping.clemson.edu/>

### **NJ STATE 4-H EGG PREPARATION DEMONSTRATION CONTEST**

- The State 4-H Egg Preparation Demonstration Contest is a state qualifier event for the National 4-H Egg and Poultry Contest.
- Open to teen 4-H members, grades 8 (minimum of 14 years of age) and above as of January 1st in 4-H poultry, foods and nutrition, or related project areas.
- Contestants must prepare an egg dish; demonstrate presentation skills; incorporate knowledge of the egg industry, food safety, egg quality, and nutrition.
- Based on final score, one individual, 14-18 years of age as of January 1<sup>st</sup> will be selected to attend the National 4-H Poultry and Egg Conference scheduled for November in Louisville, Kentucky to compete in the National 4-H Egg Preparation Demonstration Contest.

### **OTHER EVENTS:**

- ❖ Model Horse Show/Equine Art Show (Monmouth County 4-H- Ag Building, Fall)  
(NJ State 4-H- Rutgers, Winter)
- ❖ Monmouth County 4-H Animal Academy (Ag Building, Winter)
- ❖ NJ State 4-H Goat Extravaganza (Hunterdon County, Winter)
- ❖ Monmouth County 4-H Horse Shows 101 (Ricks Saddle Shop, Spring)
- ❖ Monmouth County 4-H Livestock Expo (Thompson Park, Spring)
- ❖ Junior Breeders Livestock Symposium (Rutgers, Spring)- see further details in Livestock Project.
- ❖ NJ State 4-H Animal Video Contest and Film Festival (Rutgers, spring)
- ❖ NJ State 4-H K-9 Art Show (Rutgers, Spring)

# **FORM DIRECTORY:**

- 1) 4-H Animal Registration Form- Pg. 17  
*(For Canine, Livestock, and Small Animal Projects)*
- 2) 4-H Animal Lease/Borrow Form- Pg. 18  
*(For Canine, Livestock, and Small Animal Projects)*
- 3) CVI- Pg. 19  
*(For Livestock Projects)*
- 4) 4-H Horse Registration Form- Pg. 20  
*(For Equine Projects)*
- 5) 4-H Horse Lease/Borrow Form- Pg. 21  
*(For Equine Projects)*
- 6) 4-H Horse Health Form- Pg. 22  
*(For Equine Projects)*
- 7) 4-H Poultry, Rabbit, Cavy, Health Form-  
Pg.23  
*(For Poultry, Rabbit, and Cavy Projects)*
- 8) Small Animal and Herpetology Health Form-  
Pg. 24  
*(For Small Animal and Herpetology Projects)*

# MONMOUTH COUNTY 4-H ANIMAL REGISTRATION



**Animal's Species (Circle One):** *Please use a separate form for each species.*

**Rabbit**      **Cavy**      **Sm. Animal**      **Herpetology**      **Poultry**      **Goat**      **Sheep**      **Cattle**      **Other** \_\_\_\_\_

1. Animals must be registered with the county 4-H office on OR before May 1<sup>st</sup> within each program year. Only animals properly registered will be eligible to be entered at yearly County, Regional, or State 4-H events.
2. Please do not mistake this form as an entry form for a particular event. All events will have a separate entry form for you to complete.
4. All registered animals must be in the name of the 4-H member. If this is a lease/borrow animal, please attach a **copy of the lease/borrow form**.
5. Members who own animals that require a state **permit** must attached a copy of that permit to their registration form.
6. Animals born/ hatched after May 1<sup>st</sup> will only be accepted past the deadline if the animal was born/hatched from a registered project animal.
7. Each form must be accompanied by a photo of the animal which shows all color and markings. Photos are only needed if the animal does not have a tattoo, leg band number, ear tag number, ear notches, or microchip number.

**Member's Name:** \_\_\_\_\_ **Date Submitting** \_\_\_\_\_

**Grade (as of Sept. 1st of program year)** \_\_\_\_\_ **Club Name** \_\_\_\_\_

	Name of Animal	Date of Birth/Hatch	Breed	Sex	Tattoo, Leg Band #, Tag #, or Ear notches, microchip # <i>(If none, attach photo)</i>	Lease/Borrow (Circle one)
1						Yes No
2						Yes No
3						Yes No
4						Yes No
5						Yes No
6						Yes No
7						Yes No
8						Yes No
9						Yes No
10						Yes No

**Member's Signature** \_\_\_\_\_ **Parent/Guardian's Signature** \_\_\_\_\_

**Leader's Signature** \_\_\_\_\_

**THIS FORM IS DUE ON OR BEFORE MAY 1<sup>st</sup>**

**AGREEMENT**  
**NJ 4-H Animal Lease/Borrow Agreement**  
**Between 4-H Member and Legal Owner**

Name of 4-H Member: \_\_\_\_\_  
 Address: \_\_\_\_\_  
 Town: \_\_\_\_\_ State: \_\_\_\_\_ Zip: \_\_\_\_\_  
 County: \_\_\_\_\_ Phone: ( \_\_\_\_\_ ) \_\_\_\_\_  
 Grade: \_\_\_\_\_ (as of Jan. 1st) email: \_\_\_\_\_  
 4-H Club: \_\_\_\_\_

I have read the 4-H Animal Lease/Borrow Agreement and will abide by all of the requirements.

\_\_\_\_\_ Date: \_\_\_\_\_  
 4-H Member Signature

\_\_\_\_\_ Date: \_\_\_\_\_  
 Parent/Guardian Signature

**LEGAL OWNER OF ANIMAL**

Name: \_\_\_\_\_  
 Address: \_\_\_\_\_  
 Town: \_\_\_\_\_ State: \_\_\_\_\_ Zip: \_\_\_\_\_  
 County: \_\_\_\_\_ Phone: ( \_\_\_\_\_ ) \_\_\_\_\_

I have read the NJ 4-H Animal Lease/Borrow Agreement. I will abide by it and loan the following animal(s) to the 4-H member noted above.

\_\_\_\_\_ Date: \_\_\_\_\_  
 Legal Owner Signature

Beef       Dairy       Goat       Lamb       Sheep       Other \_\_\_\_\_

Animal's Name	ID/Registration #	Ear Tag/Tattoo # (if applicable)	Breed	Date of Birth	Sex

I verify that the 4-H member is a Member in Good Standing.

\_\_\_\_\_  
 Leader's Signature \_\_\_\_\_ Date

I verify that the 4-H member is a Member in Good Standing.

\_\_\_\_\_  
 County Agent's/Program Associate's Signature \_\_\_\_\_ Date

**Form Must be Received in the 4-H Extension Office by May 1**



## 4-H Horse Registration Form

Office Use Only: Date Received in County Office \_\_\_\_\_ Project Year \_\_\_\_\_

Complete a separate form for each project animal. Send form(s) to County 4-H Office **prior to April 1.**

### 4-H Member Information

Name: \_\_\_\_\_

Address: \_\_\_\_\_

City: \_\_\_\_\_ State: \_\_\_\_\_

Zip: \_\_\_\_\_ Phone: (\_\_\_\_) \_\_\_\_\_

Email: \_\_\_\_\_

Birth date: \_\_\_\_\_ Grade: \_\_\_\_\_

Number of years in 4-H: \_\_\_\_\_

Name of 4-H club: \_\_\_\_\_ County: \_\_\_\_\_

Name of 4-H club leader(s): \_\_\_\_\_

### Project Animal Information

My project animal is a:  Horse  Pony  Mule  VSE or Mini

Animal's registered name: \_\_\_\_\_

⚠ **ONE OF THESE TWO NAMES MUST MATCH THE ANIMAL'S COGGINS EXACTLY**

Nickname or stable name: \_\_\_\_\_

Breed: \_\_\_\_\_ Registration #: \_\_\_\_\_

Registry Association(s): \_\_\_\_\_

Age of Horse: \_\_\_\_\_ Birth date: \_\_\_\_\_ Sex: \_\_\_\_\_

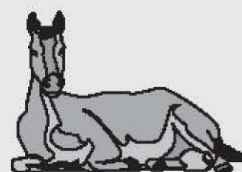
Color: \_\_\_\_\_ Height: \_\_\_\_\_ Weight: \_\_\_\_\_

Markings: \_\_\_\_\_

Date purchased/leased: \_\_\_\_\_

Ownership:  Personally-owned  Family-owned  Leased/borrowed\*

Be sure to include at least one photo of your project animal. Photo should be side view of horse with head turned toward camera so animal is clearly identifiable.



\*A Lease/Borrow Form must accompany this Registration Form. See reverse side.

# 4-H Horse Project Lease/Borrow Form

Office Use Only: Date Received in County Office \_\_\_\_\_ Project Year \_\_\_\_\_

Each of the following people should have a copy of the completed form:

*4-H member*

*Legal Owner*

*County 4-H Office*

## 4-H member

Name:

Address:

Town:  State:  Zip:

County:  Phone:

## Legal Owner of Animal

Name:  Phone:

Address:

Town:  State:  Zip:

## Animal Information

Animal's Name:

Breed:  Registration Number:

Sex:  enter here Birth Date:

Height:  Color:  Markings:

do hereby **Indicate Lend or Lease**

*Legal Owner*

to

*Animal's Name*

*4-H Member's Name*

For use as a 4-H Project Animal for the  4-H Project Year.

Owner Signature:  Date:

4-H Member Signature:  Date:

Parent Signature:  Date:

# 4-H Horse Health Information Form

Complete a separate form for each project animal. Keep a copy of this and take it and proof of items 1-7 below with you to all 4-H events with horses.

Animal's Registered Name: \_\_\_\_\_

Animal's Barn Name: \_\_\_\_\_

4-H Member Name: \_\_\_\_\_

Club Name: \_\_\_\_\_ 4-H County: \_\_\_\_\_

Street Address: \_\_\_\_\_

City: \_\_\_\_\_ State: \_\_\_\_\_ Zip: \_\_\_\_\_

Phone: (\_\_\_\_\_) \_\_\_\_\_ County: \_\_\_\_\_

Name of veterinarian: \_\_\_\_\_

Name of group (if partnership): \_\_\_\_\_

Street Address: \_\_\_\_\_

City: \_\_\_\_\_ State: \_\_\_\_\_ Zip: \_\_\_\_\_

Phone: (\_\_\_\_\_) \_\_\_\_\_ County: \_\_\_\_\_

Because of the importance to the health of your animal and other animals around it, there are some very important tests and vaccinations **required** by the state of New Jersey and/or the 4-H program.

Required test/vaccination	Date
1. Original Copy of negative Coggins Test within 12 months of State 4-H Horse Show	
2. Eastern Encephalitis vaccination within 12 of State 4-H Horse Show	
3. Tetanus vaccination within 12 months of State 4-H Horse Show	
4. Rabies vaccination within 12 months of State 4-H Horse Show	
5. West Nile Virus vaccination within 12 months of State 4-H Horse Show	
6. Equine Influenza Vaccination within 6 months of State 4-H Horse Show	
7. Equine Herpesvirus (or rhinopneumonitis) within 6 months of State 4-H Show	

\*Dates specified are subject to change.

For items 2-7 above, proof may be in one of the following ways, attached to this form:



- A. Dated, itemized bill from veterinarian stating horse's name and type of vaccinations; or
- B. Veterinary Certificate, stating horse's name and vaccinations with dates given, sign by veterinarian; or
- C. Completion of form by veterinarian:

I, \_\_\_\_\_ (name of veterinarian)

have administered all of the above required vaccinations to:

Horse's Name: \_\_\_\_\_ on (date): \_\_\_\_\_

Veterinarian's signature: \_\_\_\_\_ Date: \_\_\_\_\_



**NEW JERSEY**  
DEPARTMENT OF AGRICULTURE

## 4-H POULTRY, RABBIT, OR CAVY HEALTH FORM

This form is to be completed by the 4-H leader or other qualified adult within 30 days prior to the exhibition of any of the above animals at a 4-H sponsored show or demonstration. A separate form must be completed for each type of animal. This form is not to be used if the above animals are on the same premises with commercial animals of the same type. In that case, a health chart prepared by an accredited veterinarian must be issued within 30 days prior to the show.

<b>Name of Owner</b> _____	
<b>Address</b> _____	
<b>Telephone number</b> _____	<b>Type of Animal</b> _____
<b>Number of animals on premises</b> _____	
<b>Environment and housing of animals</b>	
1. Are cages or coop dirty? _____	
2. Is area about cages or coop dirty or is trash left lying around? _____	
3. Is bedding dirty or inadequate? _____	
4. Is water supply dirty or inadequate? _____	
5. Do unwanted pests have access to stored feed? _____	
6. Is feed fed in a dirty manner? _____	
7. Have the animals been in the possession of the owner for <i>less than</i> 30 days? _____	
<b>Appearance of animals</b>	
8. Do animals have swollen, runny or clouded eyes? _____	
9. Is skin (feathers) dirty or abnormal appearing? _____	
10. Do animals have discharge from the nose? _____	
11. Do feet appear abnormal? _____	
12. Does breathing appear abnormal? _____	
13. Are there signs of diarrhea? _____	
<b>(Check one) <input type="checkbox"/> I recommend approval to show at:</b>	
_____ on _____	
<b>Place</b> <span style="float: right;"><b>Date</b></span>	
(This recommendation may be made if all of the above answers are "no")	
<input type="checkbox"/> <b>I recommend that this animal have written veterinarian's approval to show.</b>	
(This recommendation must be made is any of the above answers are "yes" or if the inspector has any concerns about the health or care of the animal).	
<b>I certify that to the best of my knowledge the above information is true and correct.</b>	
_____ Signature of Inspector	_____ Date



## 4-H SSAPAC SMALL ANIMAL & HERPETOLOGY HEALTH FORM

This form is to be completed by the 4-H Leader or qualified adult within 30 days prior of the exhibition of any of the above animals at a 4-H sponsored show or demonstration. A separate form must be complete for each type of animal. This form is not to be used if the above animals are on the same premises with commercial animals of the same type. In that case, a health chart prepared by an accredited veterinarian must be issued within 30 days prior to the show.

Name of Owner: _____		
Address: _____		
Phone: (    ) _____ Type of Animal(s) _____		
Number of Animals _____		
<b><u>Environment &amp; Housing of Animals/Reptiles</u></b>	<b>YES</b>	<b>NO</b>
1. Are cages, coops, tanks or containers dirty?	<input type="checkbox"/>	<input type="checkbox"/>
2. Is the area around the cages, coops, tanks or containers dirty?	<input type="checkbox"/>	<input type="checkbox"/>
3. Is there trash and debris in the housing area?	<input type="checkbox"/>	<input type="checkbox"/>
4. Is the water supply dirty?	<input type="checkbox"/>	<input type="checkbox"/>
5. Is the water supply inadequate?	<input type="checkbox"/>	<input type="checkbox"/>
6. Is feed fed in an unsanitary manner?	<input type="checkbox"/>	<input type="checkbox"/>
7. Is feed inadequately supplied?	<input type="checkbox"/>	<input type="checkbox"/>
8. Have the animals been in the possession of the owner for less than 60 days?	<input type="checkbox"/>	<input type="checkbox"/>
<b><u>Appearance of Animals/Reptiles</u></b>	<b>YES</b>	<b>NO</b>
1. Are the eyes swollen, clouded or runny?	<input type="checkbox"/>	<input type="checkbox"/>
2. Is the skin, fur, feathers or scales dirty or abnormal?	<input type="checkbox"/>	<input type="checkbox"/>
3. Is there a discharge from the nasal area?	<input type="checkbox"/>	<input type="checkbox"/>
4. Do the feet/ toes appear abnormal?	<input type="checkbox"/>	<input type="checkbox"/>
5. Does the breathing appear abnormal?	<input type="checkbox"/>	<input type="checkbox"/>
6. Are there signs of diarrhea?	<input type="checkbox"/>	<input type="checkbox"/>
(Check One) <input type="checkbox"/> I recommend approval to show at:		
_____	on	_____
Location		Date
<input type="checkbox"/> I recommend that this animal(s)/reptile(s) have a written veterinarian's approval to show.		
<b>I certify that to the best of my knowledge the above information is true and correct</b>		
_____		_____
Signature of Inspector		Date