



**The New Jersey
Department of Human Services**

Partnership for Children

and

Local System of Care

The New Jersey Department of Human Services (DHS)

Partnership for Children



- The Department of Human Services (DHS) is building one doorway for families to access services.
- The doorway is called the *Partnership for Children*.

Contracted Systems Administrator (CSA)

Value Options

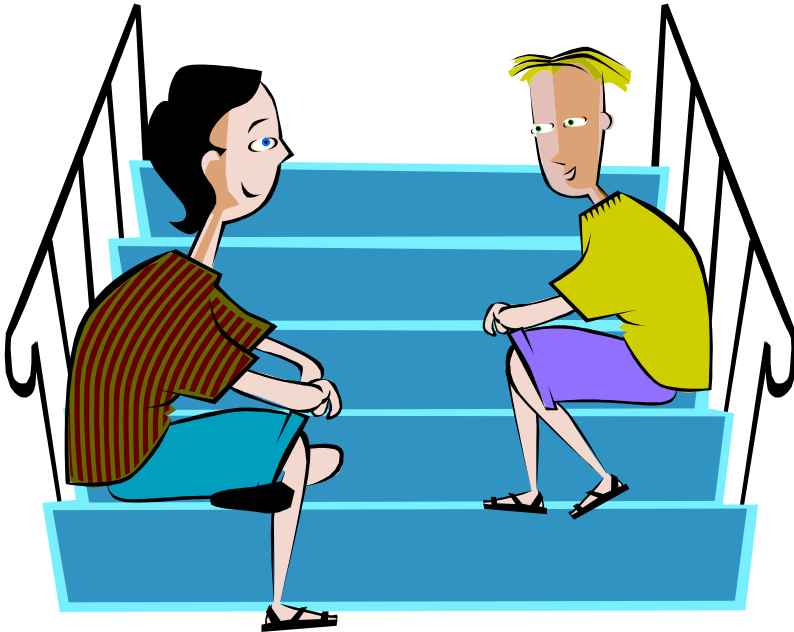


- First Step for Accessing Services
- Referrals and Information
- Phone-based Case Management
- Data Management

1-877-652-7624

Youth Case Management (YCM)

CPC Behavioral Health Care

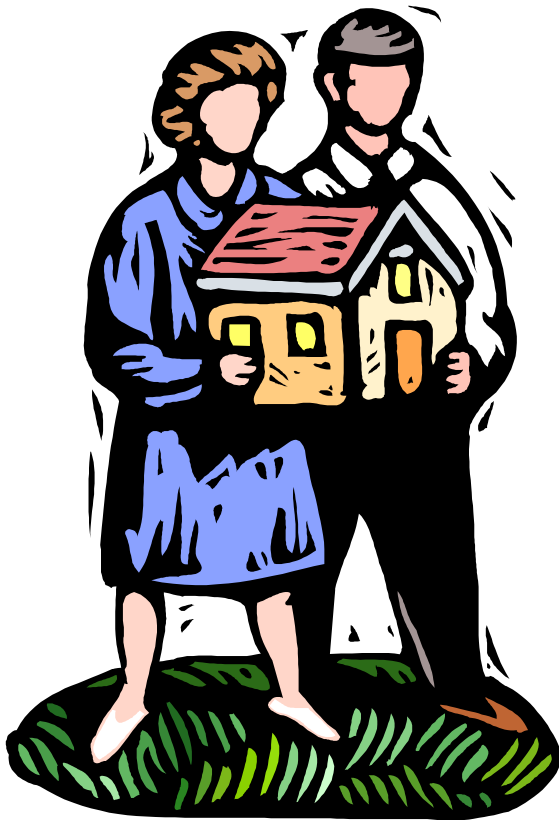


- Short-term, face-to-face case management
- In-home services
- Service Coordination

1-877-652-7624

Care Management Organization (CMO)

MonmouthCares, Inc.

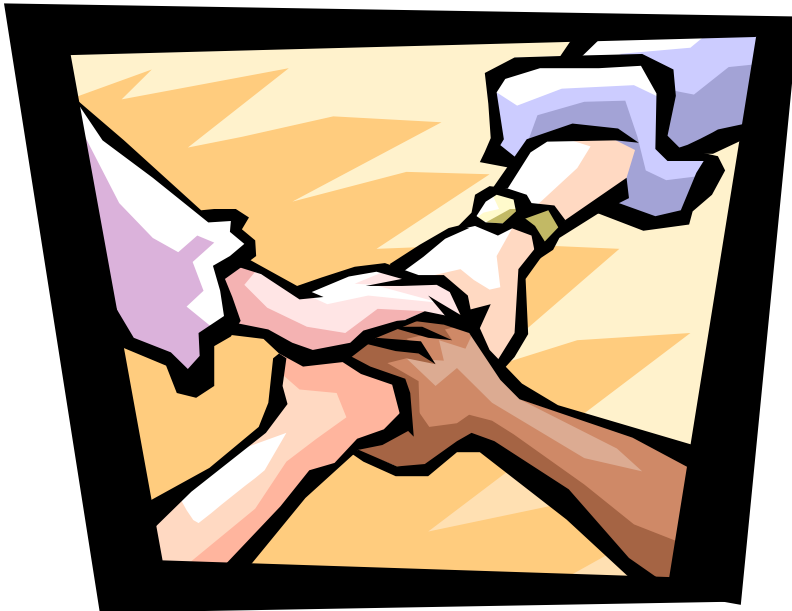


- Intensive, long-term team-based Care Management
- Child-Family Teams
- Community-Based

1-877-652-7624

Family Support Organization (FSO)

Family Based Services Association of NJ, Inc



- Parent Partners
- Support Groups
- Warm Line
- Education
- Training

732-380-1300

Youth Partnership



- Youth Advocacy
- Peer-to-Peer Support
- Voluntary Membership
- Educating the Community about mental health issues

732-380-1300

Children's Mobile Response & Stabilization

CPC Behavioral Health Care



- 24 / 7
Mobile Response for
Families in Crisis
- Trained intervention
workers
- Stabilization services

1-877-652-7624

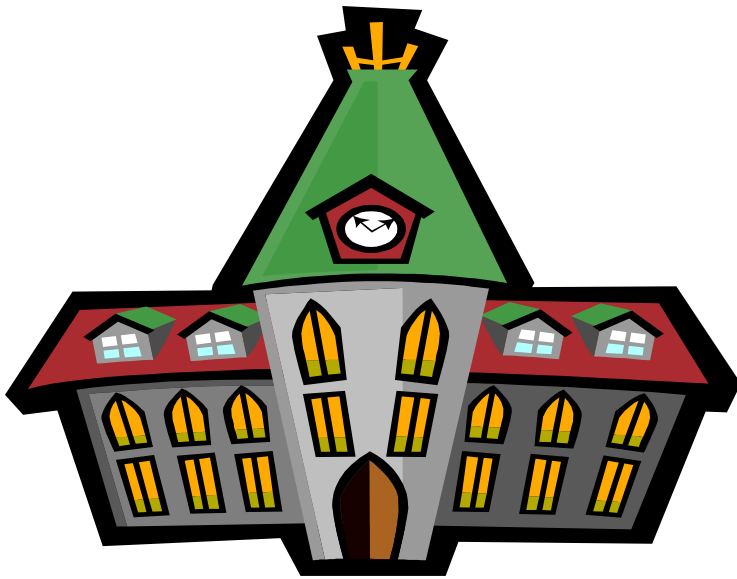
Provider Services

Local Mental Health Providers



- Behavioral Assistance and In-Community Services
- Family Centered, Culturally Competent, Coordinated Services

Schools & Child-Study Teams



- Key members of Child-Family Teams
- Partners in Planning
- Systems Partners

Statewide Systems Management

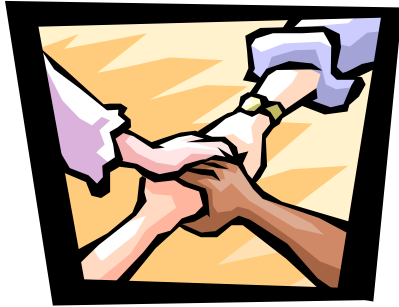


**New Jersey Department of
Human Services (DHS) –**
Partnership for Children



**Contracted Systems
Administrator (CSA) –**
Value Options

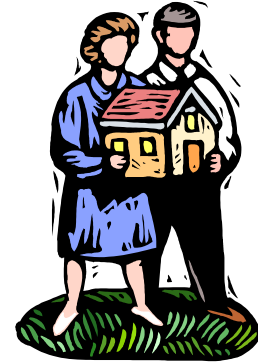
Local System of Care



**Family
Support
Organization**



Mobile Response



**Care Management
Organization**



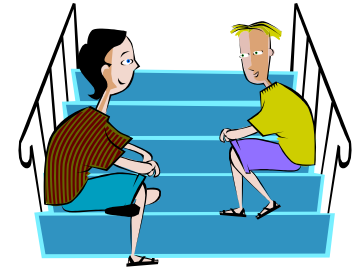
**Youth
Partnership**



Providers

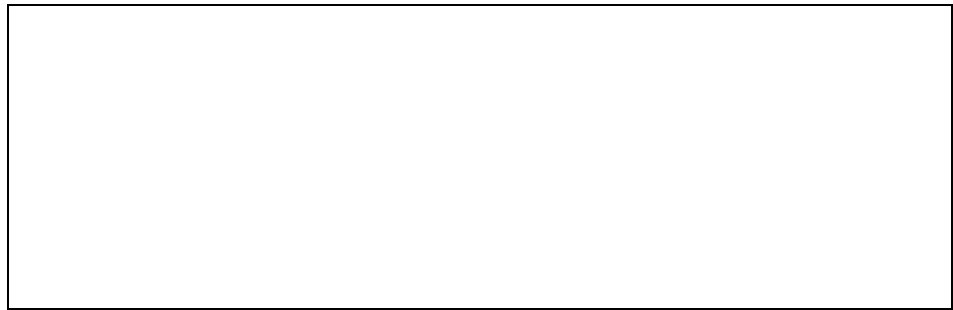
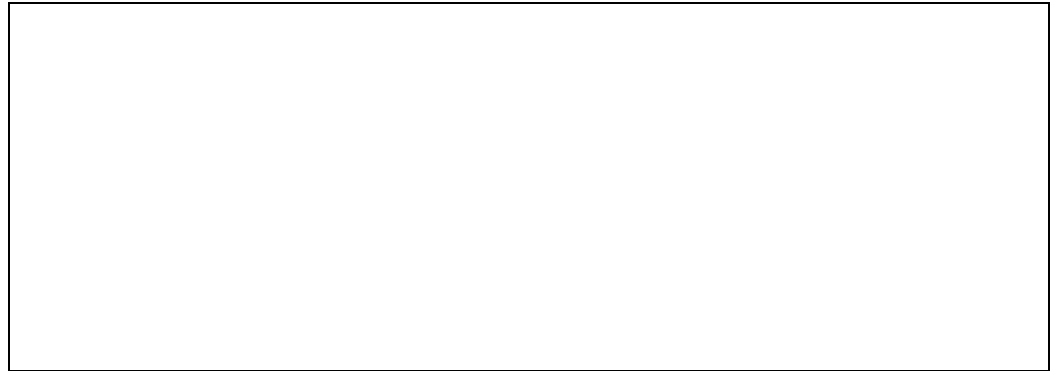


Schools

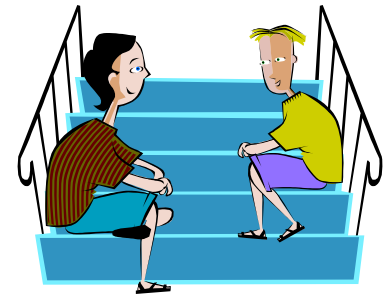
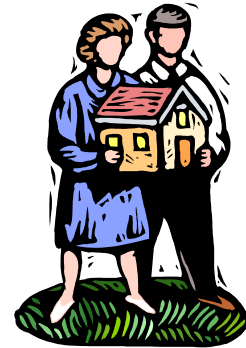


**Youth
Case
Management**

Statewide Systems Management



Local System of Care



What Makes A System of Care Necessary?

“The world that we have made as a result of the level of thinking we have done thus far creates problems that we cannot solve at the same level at which we created them.”

-Albert Einstein-

To Keep Kids At Home, In School & Out of Trouble

- **Family-driven plans and services**
- **Strength-based plans and services**
- **Culturally competent plans and services**
- **Community-based resources**
- **One family – One plan**
- **Never give up (AKA-No reject, no eject)**

**“It is harder to
institutionalize an idea than
to institutionalize a kid”**

Wraparound Milwaukee