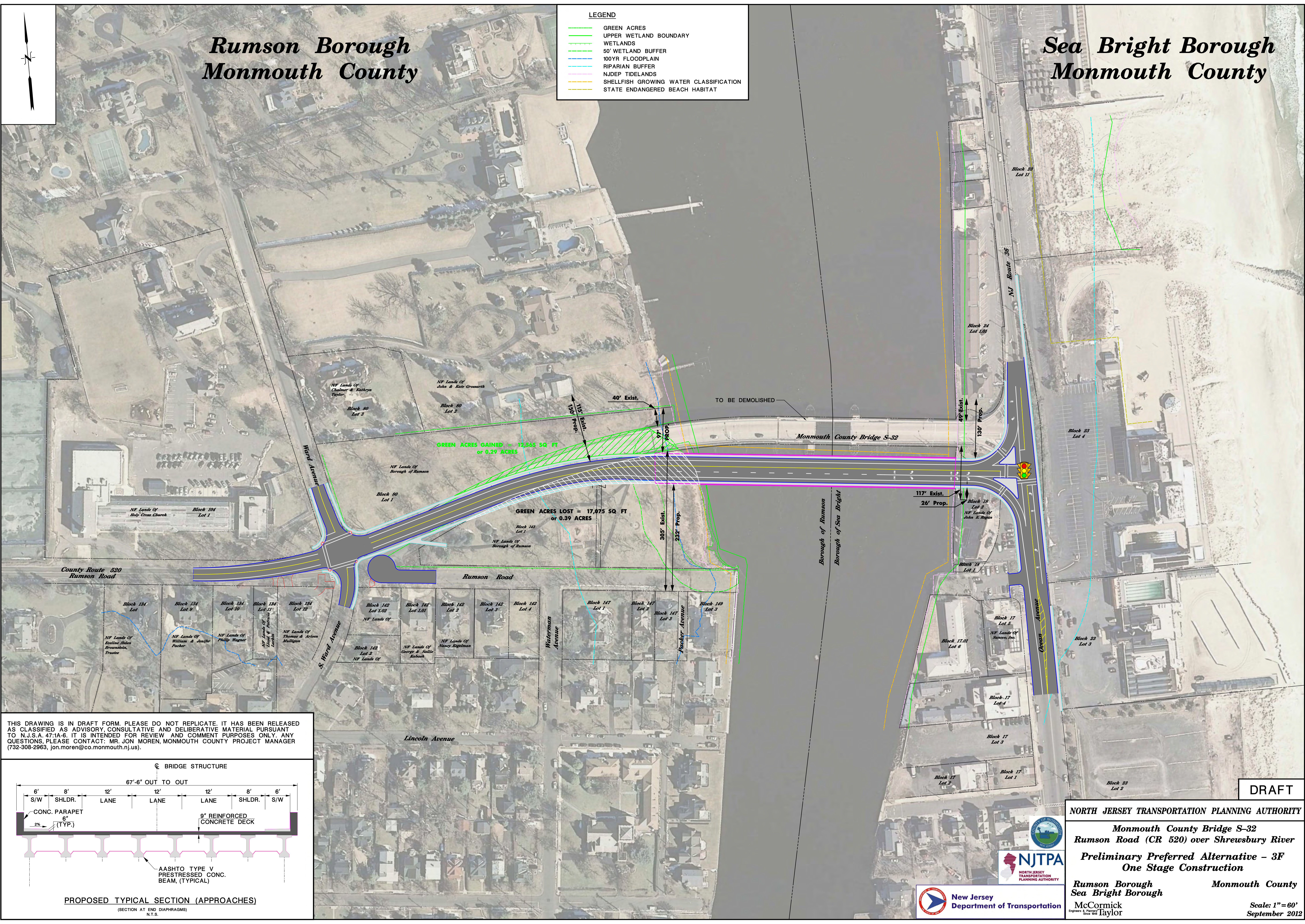


Rumson Borough Monmouth County

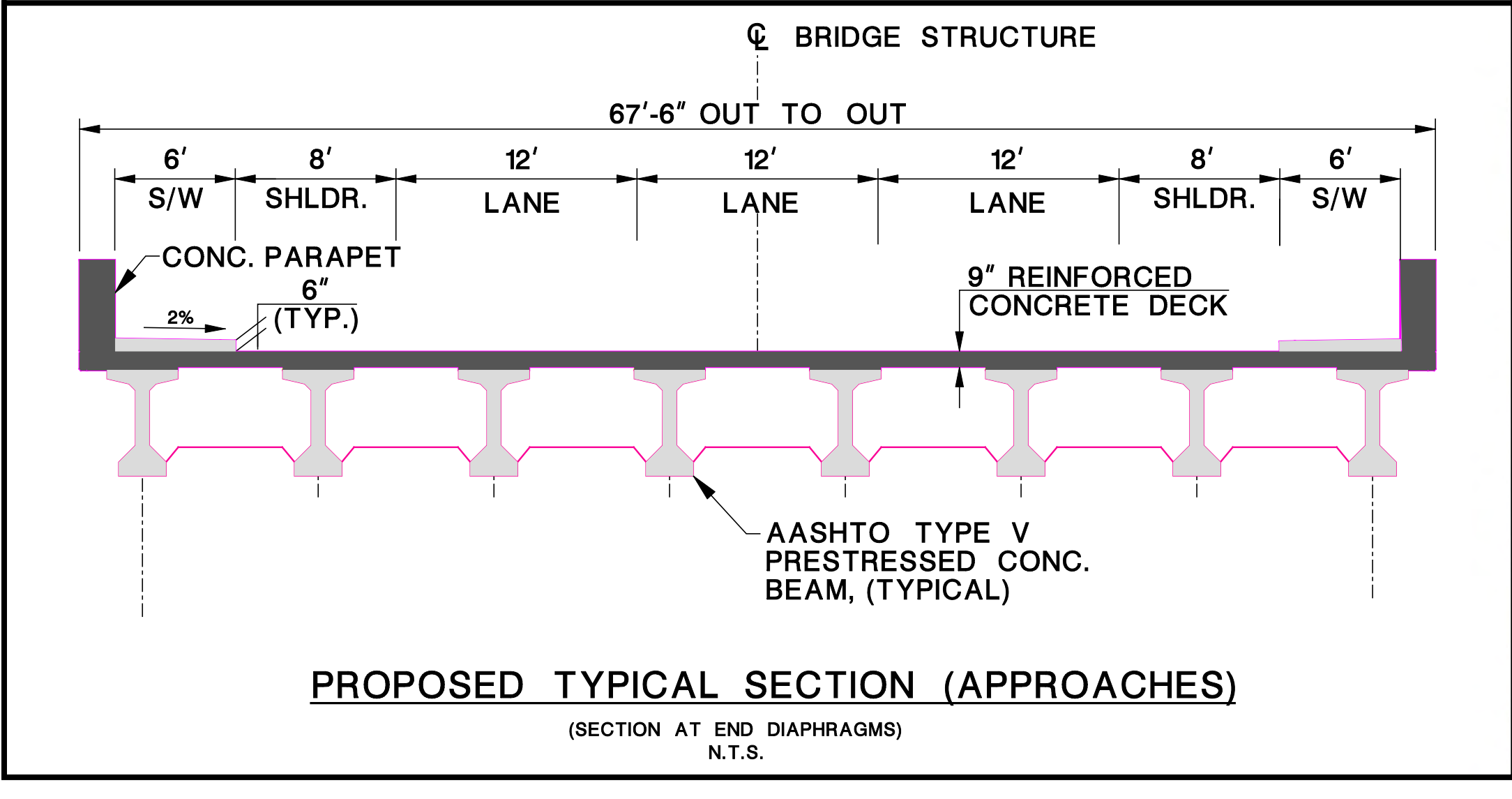
Sea Bright Borough Monmouth County

LEGEND

- GREEN ACRES
- UPPER WETLAND BOUNDARY
- WETLANDS
- 50' WETLAND BUFFER
- 100YR FLOODPLAIN
- RIPARIAN BUFFER
- NJDEP TIDELANDS
- SHELLFISH GROWING WATER CLASSIFICATION
- STATE ENDANGERED BEACH HABITAT



THIS DRAWING IS IN DRAFT FORM. PLEASE DO NOT REPLICATE. IT HAS BEEN RELEASED AS CLASSIFIED AS ADVISORY, CONSULTATIVE AND DELIBERATIVE MATERIAL PURSUANT TO N.J.S.A. 47:1A-6. IT IS INTENDED FOR REVIEW AND COMMENT PURPOSES ONLY. ANY QUESTIONS, PLEASE CONTACT: MR. JON MOREN, MONMOUTH COUNTY PROJECT MANAGER (732-308-2963, jon.moren@co.monmouth.nj.us).



DRAFT

NORTH JERSEY TRANSPORTATION PLANNING AUTHORITY

Monmouth County Bridge S-32
Rumson Road (CR 520) over Shrewsbury River
Preliminary Preferred Alternative - 3F
One Stage Construction

Rumson Borough
Sea Bright Borough
Monmouth County

New Jersey Department of Transportation

McCormick
Engineers & Planners
Since 1944 Taylor

Scale: 1" = 60'
September 2012