

# Roadway Improvements to County Route 537 Corridor between Sentinel Road and US Route 9 Interchange Local Preliminary Engineering Phase

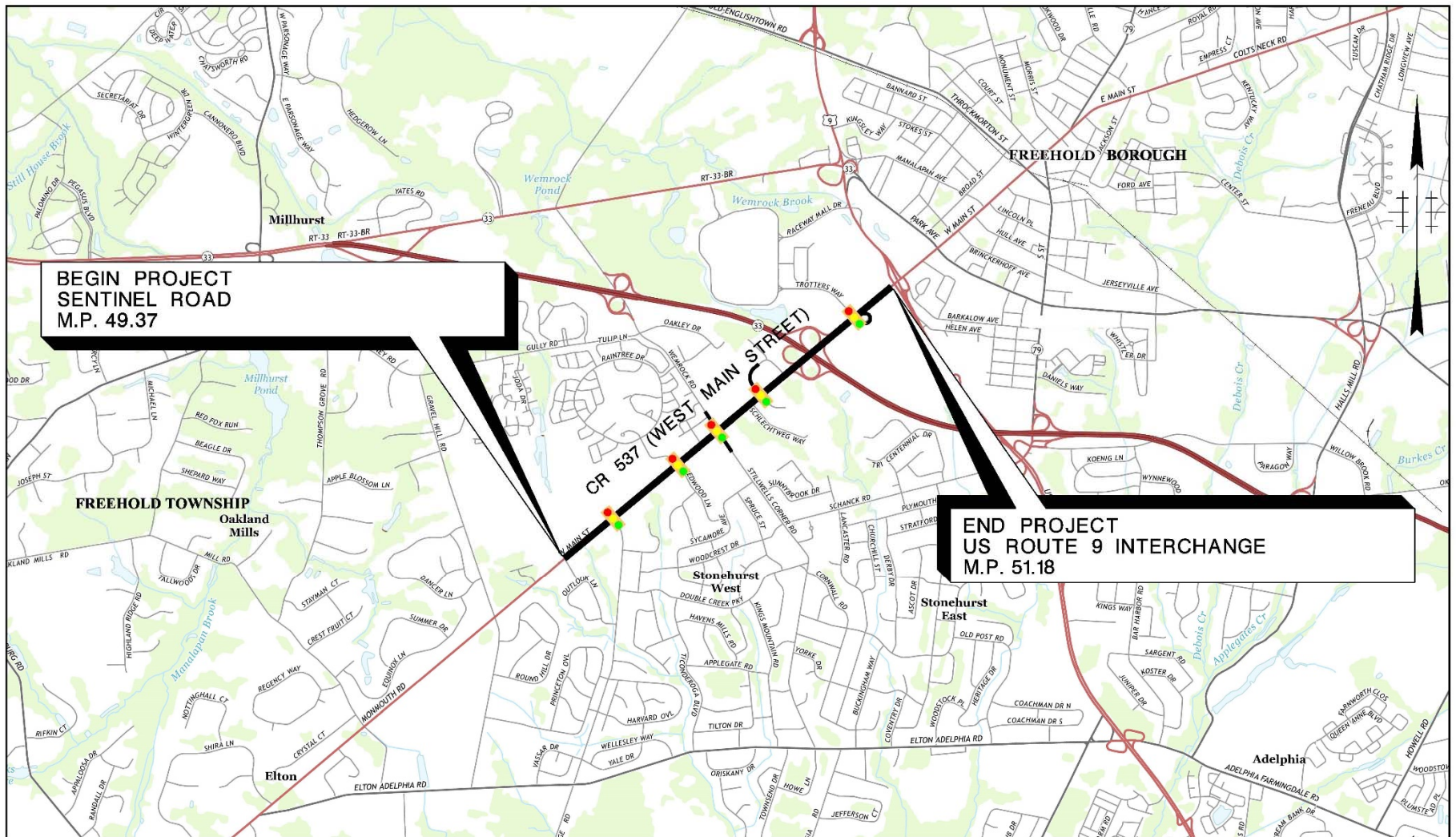


Public Information Center No. 1  
September 19, 2017



U.S. Department of Transportation  
**Federal Highway  
Administration**





**Project Location Map**  
**Total Length of Project = 9570 LF (1.81 Miles)**

# Project Overview

- The purpose of this project is to improve traffic safety, reduce traffic congestion, and provide better accommodations for various modes of transportation along the Monmouth County Route 537 Corridor
- Federal funding being utilized for design and construction of the roadway improvements through Local Capital Project Delivery Program (LCPD)
- Improvements to US Route 9 and NJ Route 33 interchanges are not part of this project

# NJTPA Local Capital Project Delivery Program

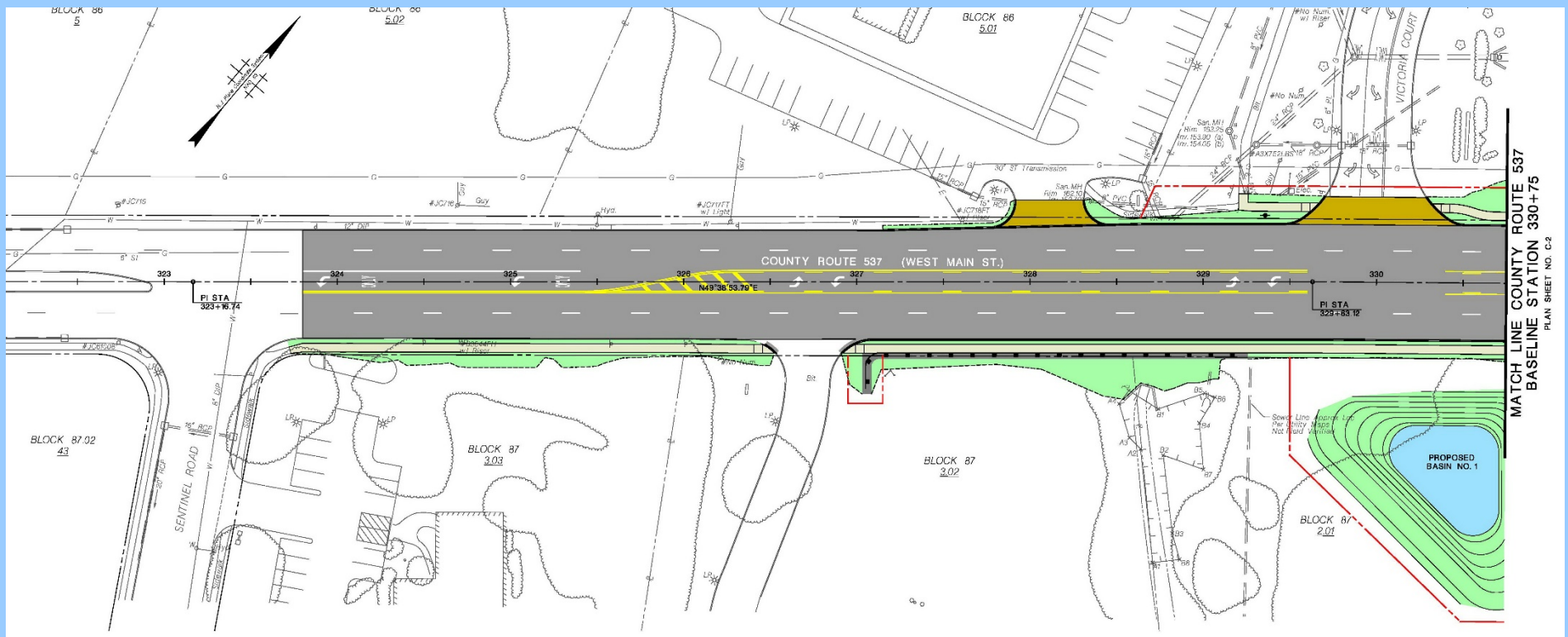
<b>Local Concept Development (LCD) COMPLETED MARCH 2013</b>	<b>Local Preliminary Engineering (LPE) ANTICIPATED COMPLETION MAY 2018</b>	<b>Final Design (FD)/ Right of Way Acquisition SCHEDULED TO BEGIN DECEMBER 2018</b>	<b>Construction</b>
Purpose and Need Statement	Approved Design Exception Report	Construction Contract Documents and PS&E package	Complete Construction
Concept Development & Alternatives Analyses	Cost Estimates (Final Design, ROW and Construction)	Environmental Reevaluations	Continue Public Outreach
Selection of Preliminary Preferred Alternative (PPA)	Approved Environmental Document	Secure Environmental Permits	As-Builts
Environmental Screening Report & NEPA Classification	Preliminary Design	Acquisition of ROW	Update and Finalize Design Communications Report
Concept Development Report	Preliminary Engineering Report	Final Utility Relocation Schemes	Close-out Documentation
Initiate Public Outreach & Involvement	Continue Public Outreach & Involvement	Continue Public Outreach & Involvement	

# Project Considerations

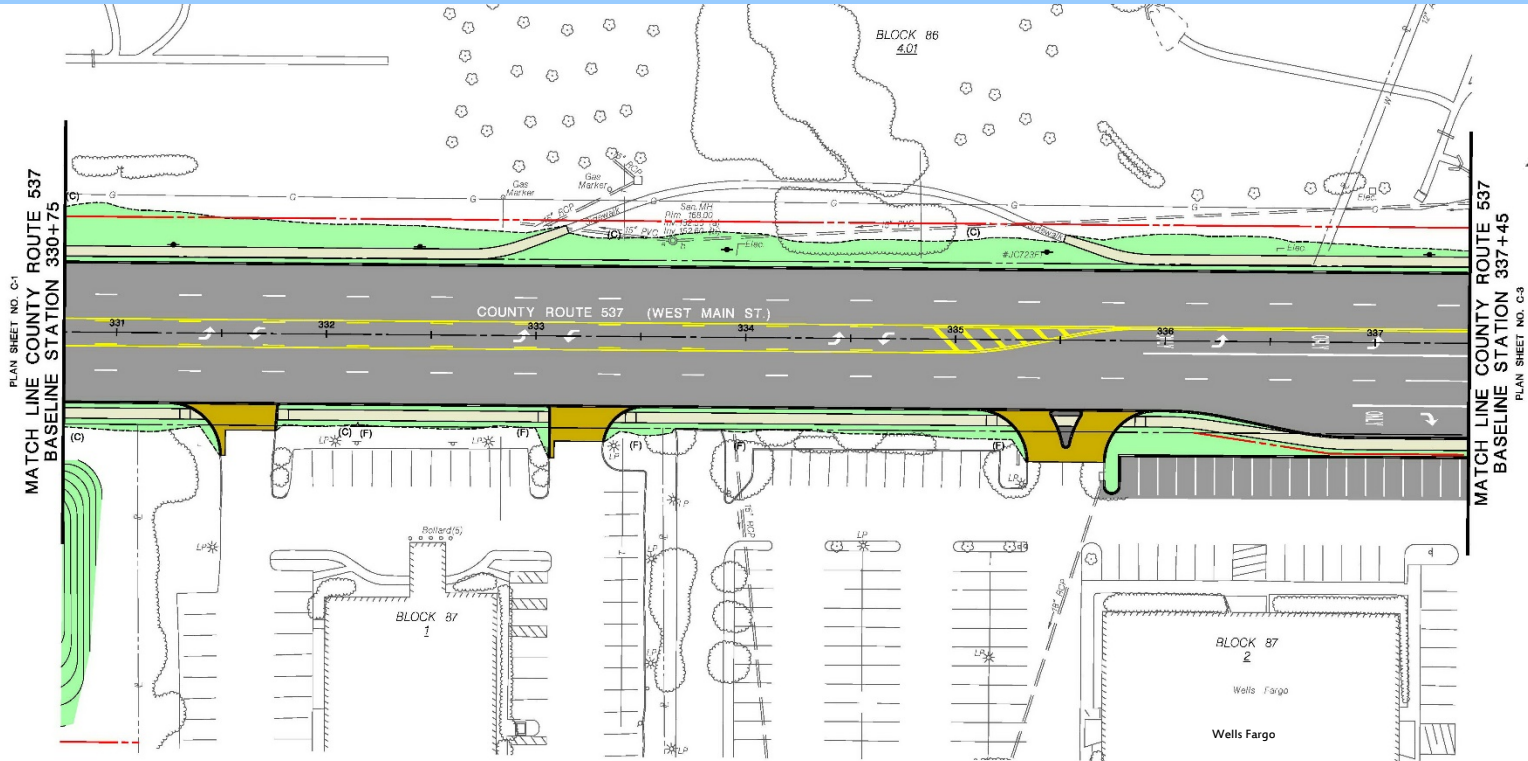
- Proposed Traffic Volumes Projected to 2032
  - All approved/under construction development generated traffic included in volume projections
  - Bellemead Development Phase I (400 residential units) with conditional approval also included (currently on hold)
  - Background growth includes projected population and employment growth based on NJTPA Plan 2040.

# Local Preliminary Engineering Plans - 2017

- Based on Preliminary Preferred Alternative (PPA) selected in 2013 at the conclusion of LCD Phase

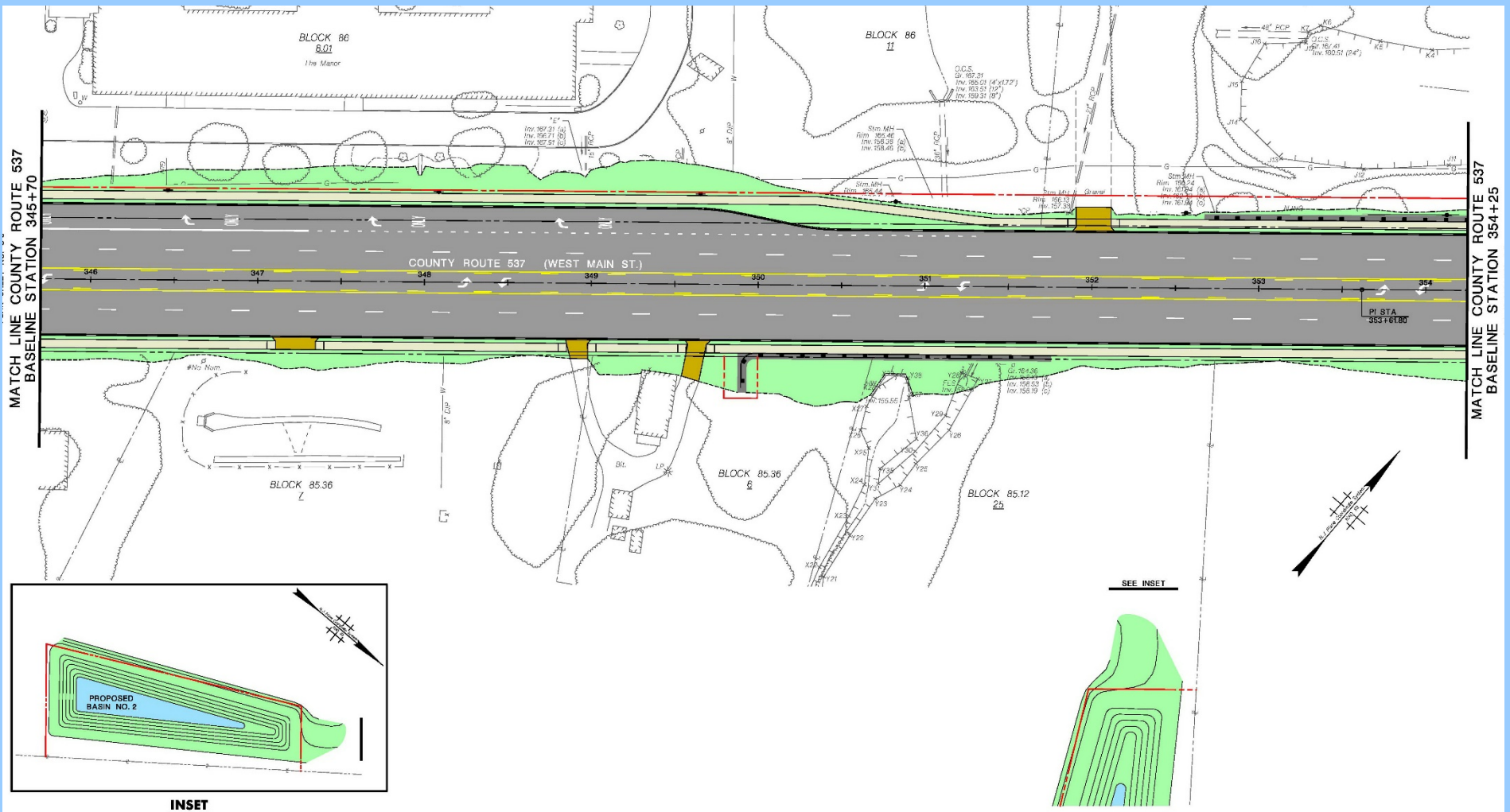


# Local Preliminary Engineering Plans - 2017

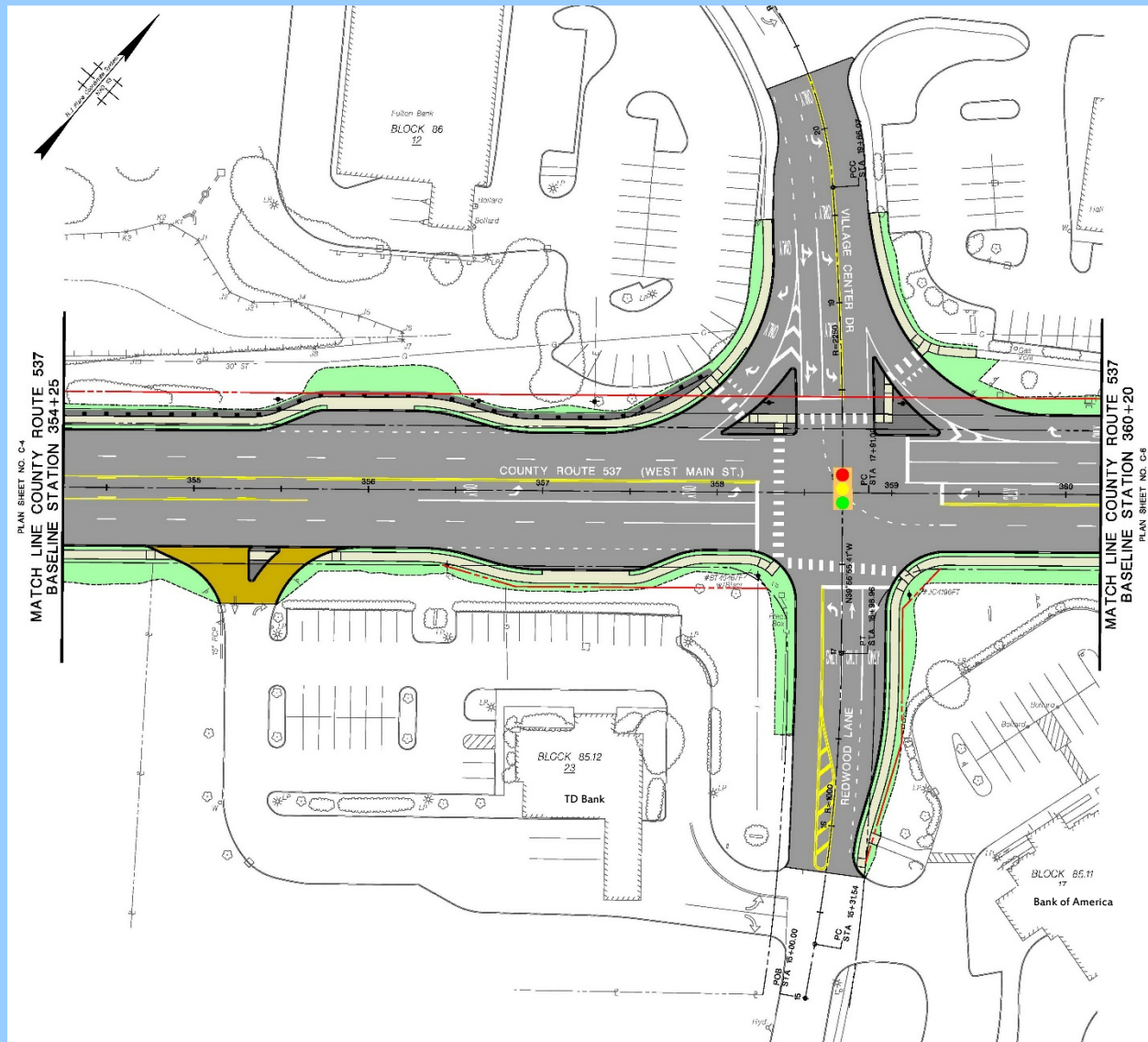




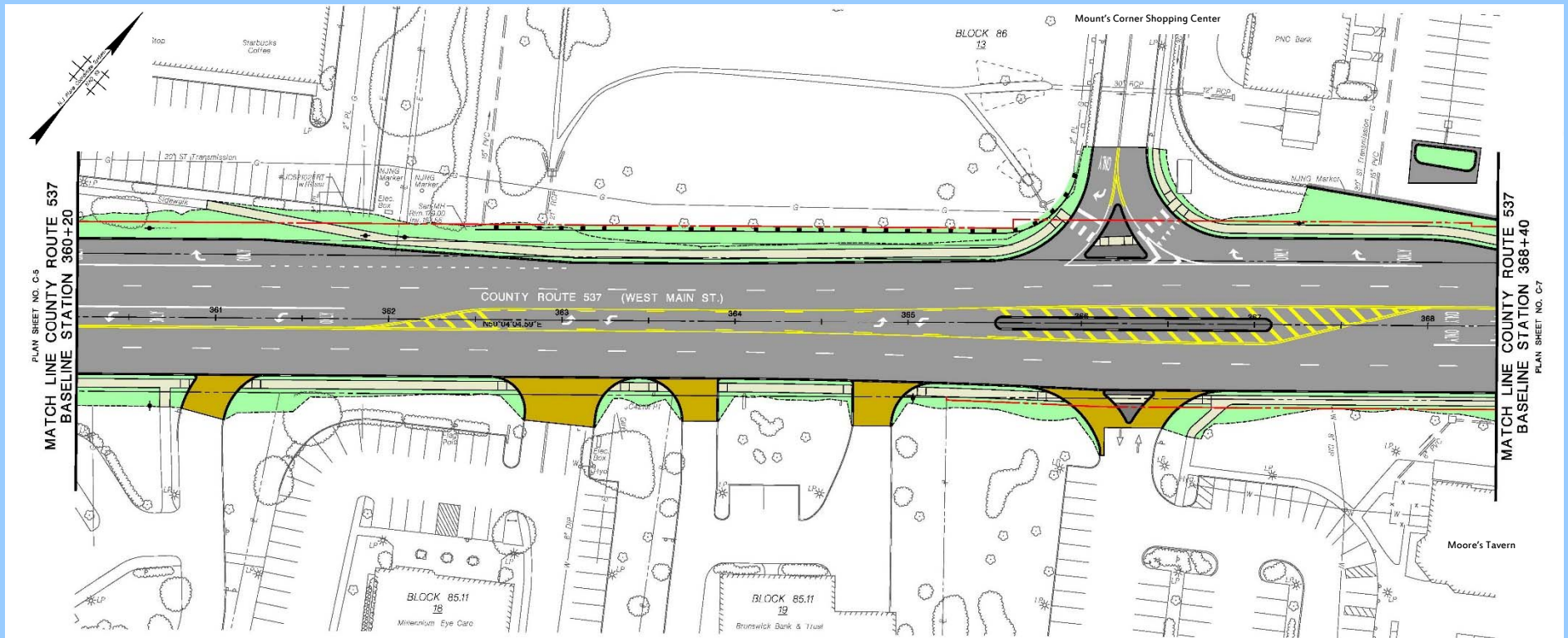
# Local Preliminary Engineering Plans - 2017



# Local Preliminary Engineering Plans - 2017

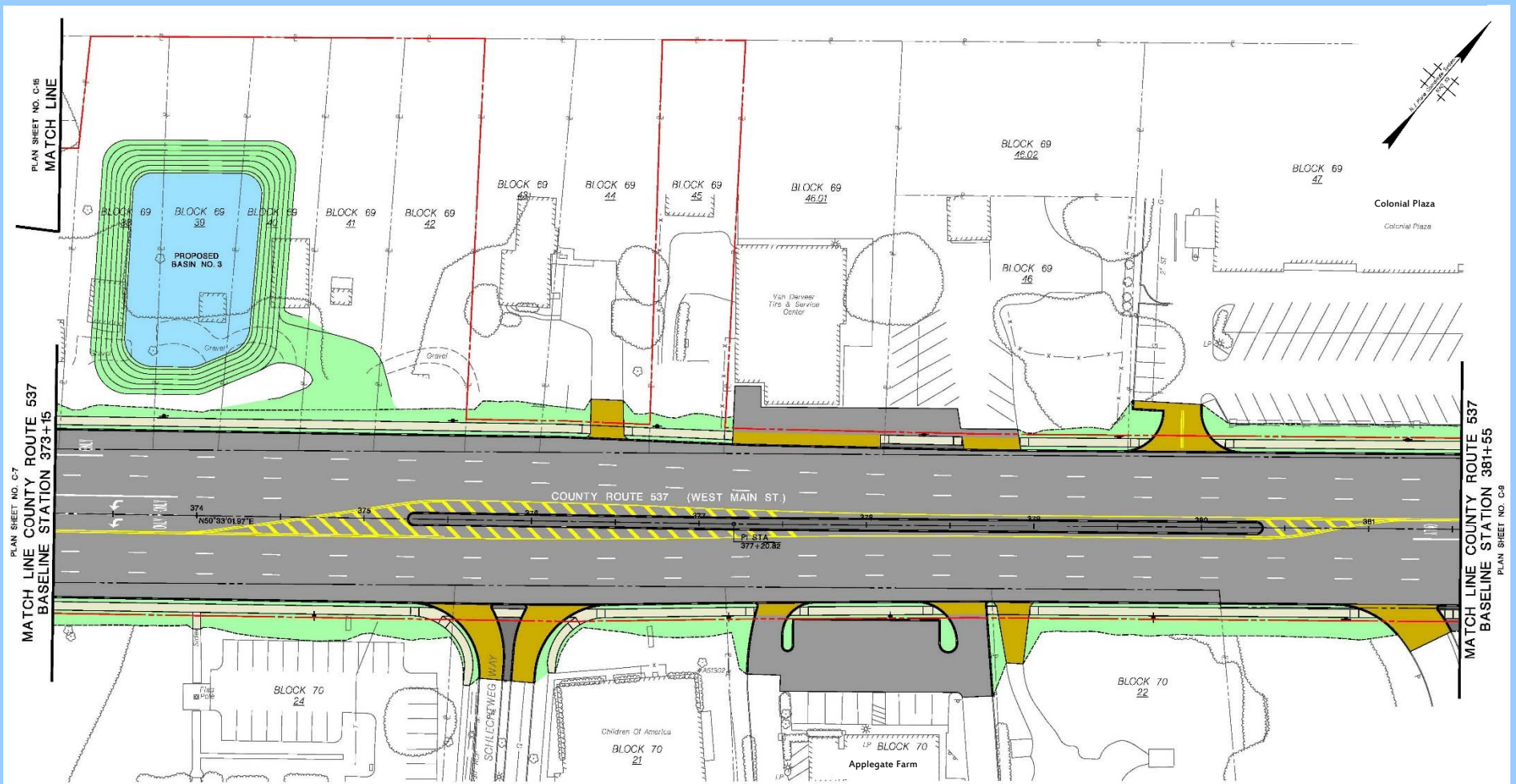


# Local Preliminary Engineering Plans - 2017





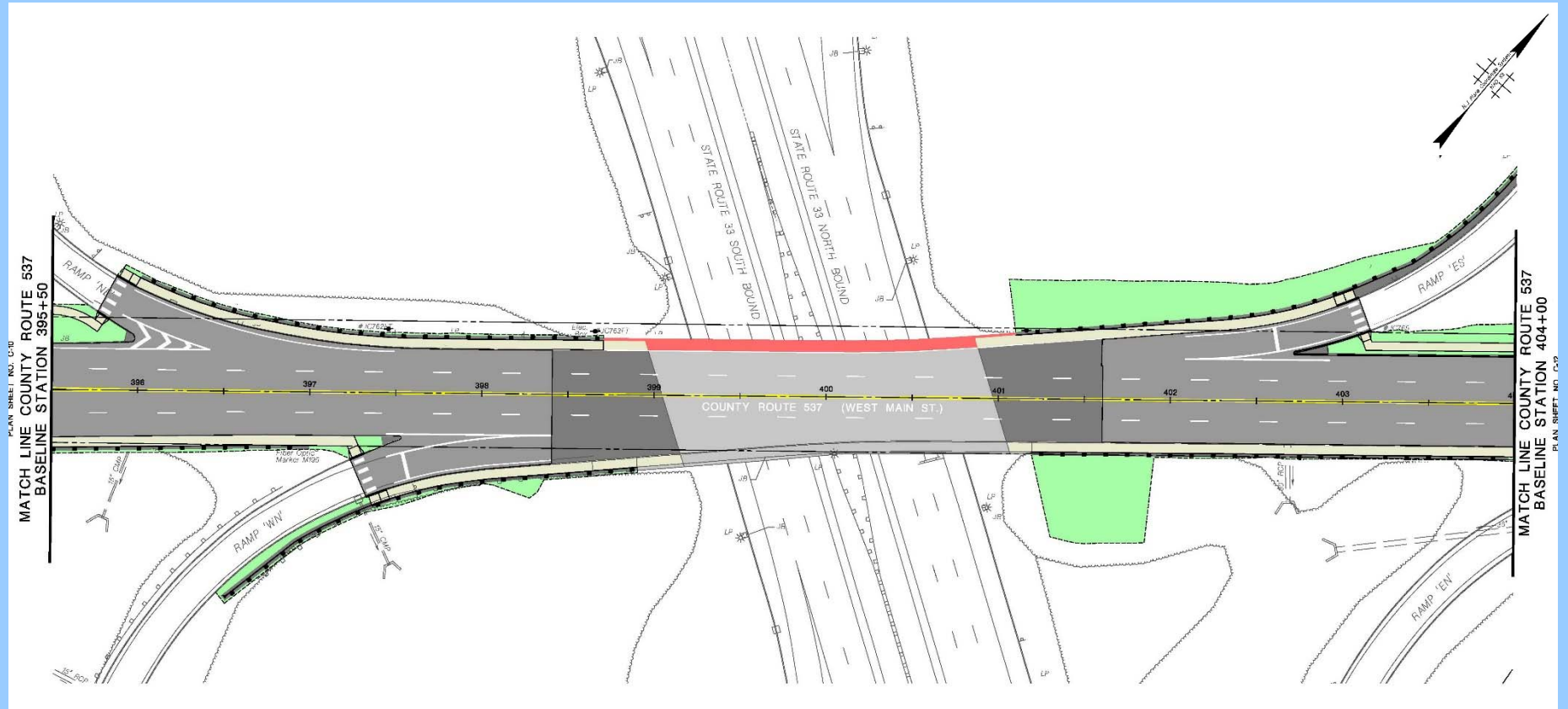
# Local Preliminary Engineering Plans - 2017







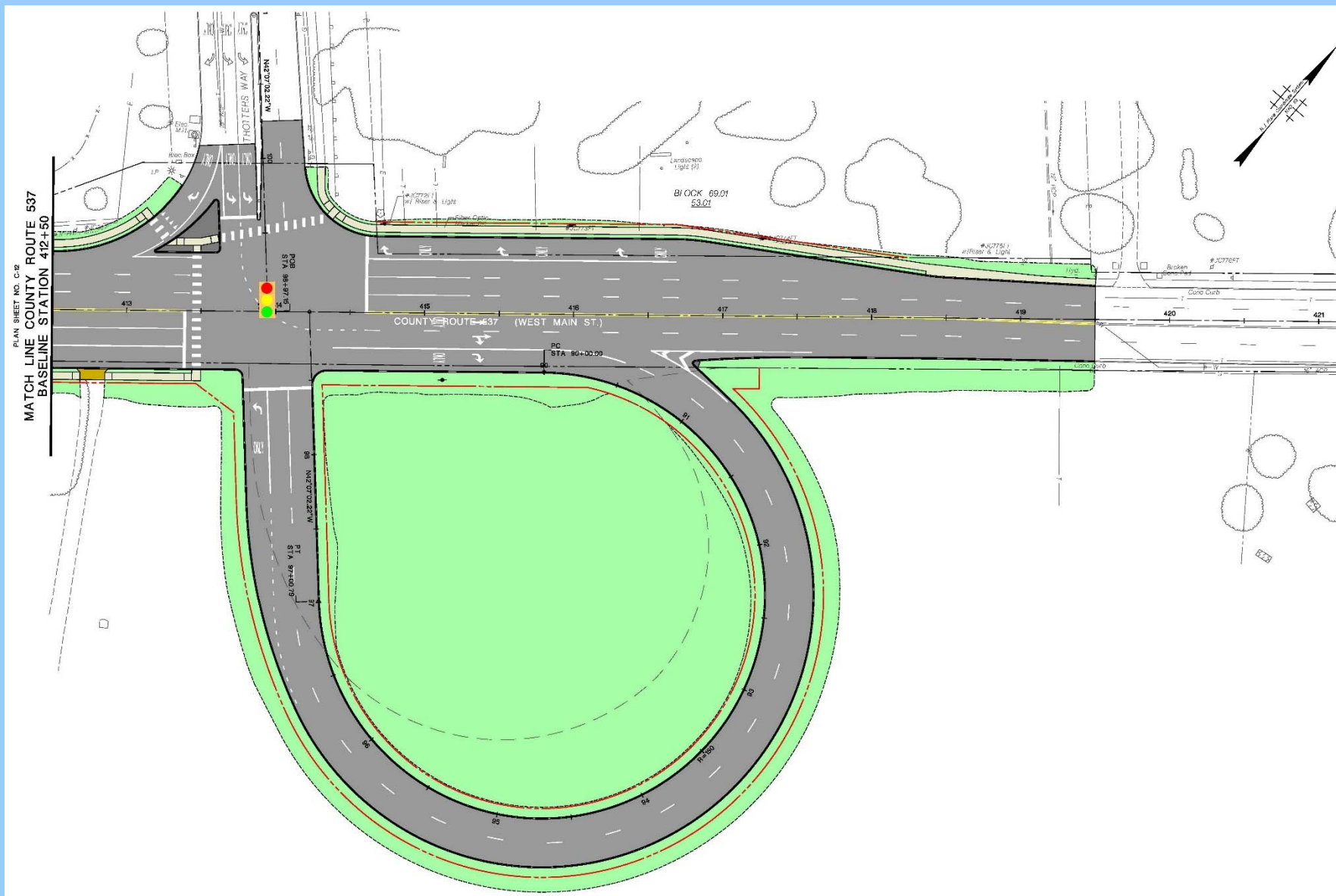
# Local Preliminary Engineering Plans - 2017



# Local Preliminary Engineering Plans - 2017



# Local Preliminary Engineering Plans - 2017

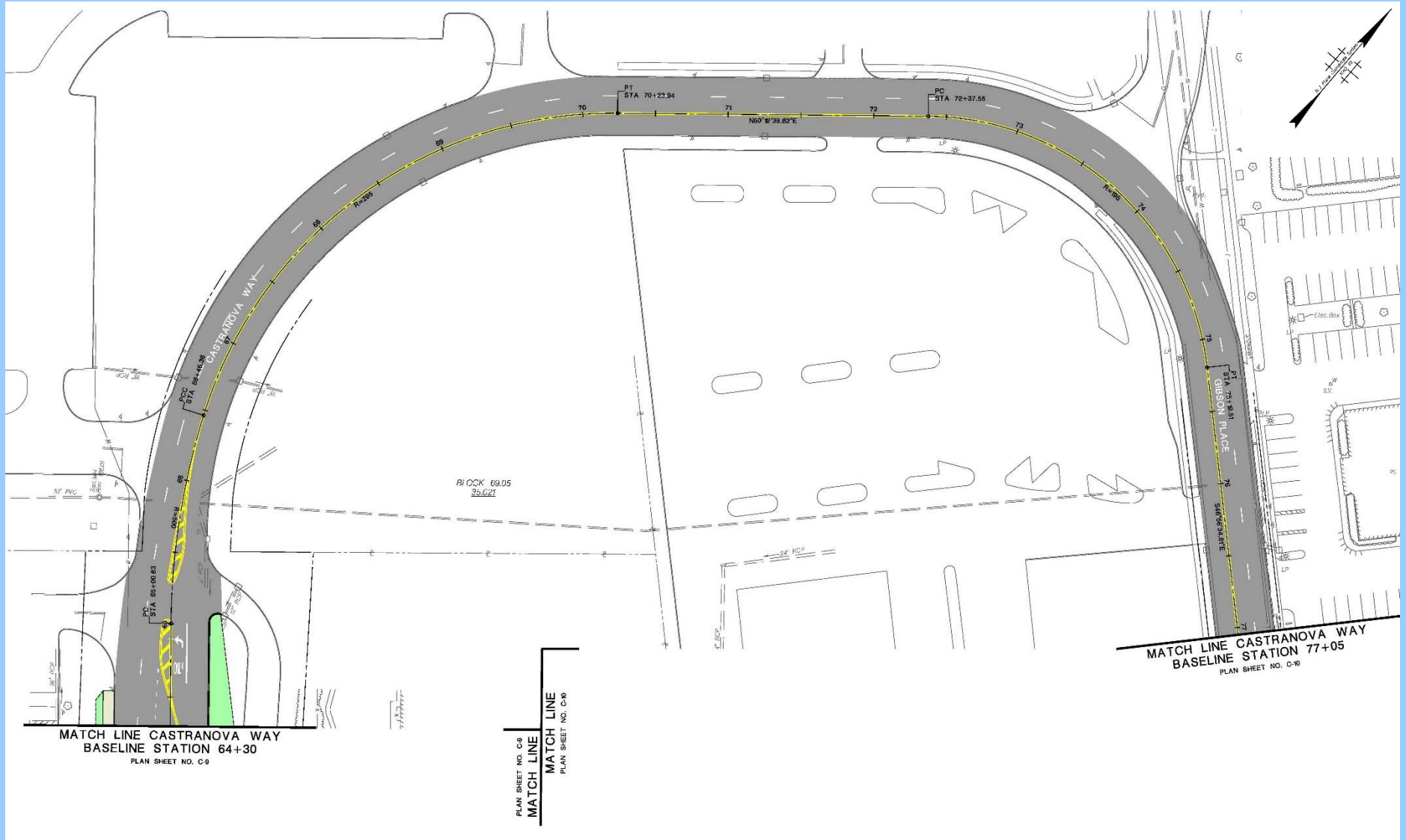




# Local Preliminary Engineering Plans - 2017



# Local Preliminary Engineering Plans - 2017



# Local Preliminary Engineering – Right of Way

- Number of Properties = 32 Partial Impacts  
= 9 Full Property Acquisitions

# Environmental Documentation

- Section 106 (Cultural Resources)
- NEPA Document (Categorical Exclusions Documentation)
  - Hazardous Waste Study
  - Air-Quality Study
  - Noise Study
  - Ecology Study
  - Socio-Economics

# Cultural Resources

- Cultural Resources Investigation performed under Section 106 of the National Historic Preservation Act



# Cultural Resources

- Phase I/II Archaeological Survey
- Intensive-level Historic Architectural Survey
- Eight archaeological sites identified
- Historic Properties include Walker-Combs-Hartshorne House and Dr. Thomas Henderson House Site
- Adverse Effects on historic properties resolved through development of a Memorandum of Agreement and implementation of mitigation measures
- Coordination with NJDOT, FHWA and NJ SHPO

# Permits

<b>Agency</b>	<b>Approval</b>
Freehold Soil Conservation District	Soil Erosion & Sediment Control Plan Certification
NJDEP	Freshwater Wetlands Permit
NJDEP	Water Quality Certificate
NJDEP	Flood Hazard Area Permit
NJDEP	Storm Water Management Plan Approval

## Community Involvement (LPE Phase)

- Local Officials Meeting No. 1 with the Township of Freehold, February 9, 2016
- Local Officials Meeting No. 2 with the Township of Freehold, February 1, 2017
- Community Stakeholders Meeting, February 15, 2017
- Public Information Center, September 19, 2017
  - Comments accepted through Friday, October 20, 2017
- Community Outreach to continue in Final Design (FD) Phase

# Project Schedule

- Completion of Preliminary Engineering Phase - May 2018
- Final Design Phase & ROW Acquisitions - Fall 2018 to Spring 2021
- Construction Authorization FY 2021 – September 30, 2021
- Construction - Fall 2021 to Fall 2023

# Project Contact Information

- Daria Jakimowska, Monmouth County Project Manager
- Phone: (732) 431-7760
- Email: [daria.jakimowska@co.monmouth.nj.us](mailto:daria.jakimowska@co.monmouth.nj.us)
- **Monmouth County Web site address:**
  - Go to: [www.visitmonmouth.com](http://www.visitmonmouth.com)
  - Select ‘County Bridge & Road Projects’ from the right side box
  - Click ‘Freehold – West Main Street (CR537)’
  - Note: This Power Point Presentation and Presentation Boards will be posted on the Monmouth County website
- County welcomes community input – please complete the PIC Comment Form (30-day period ends October 20, 2017)

# Questions

- Q & A will be held at display board areas to discuss and address specific questions