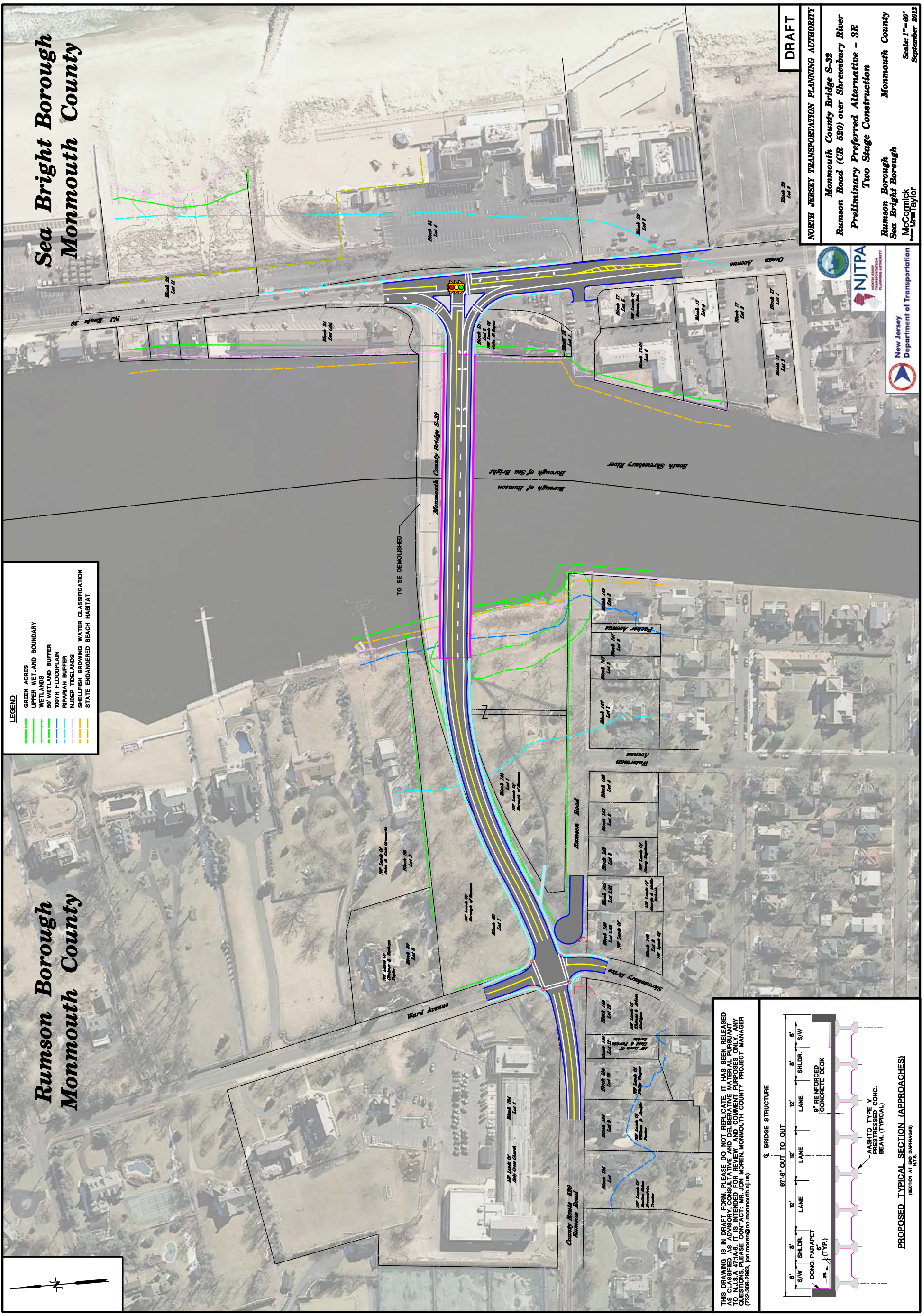


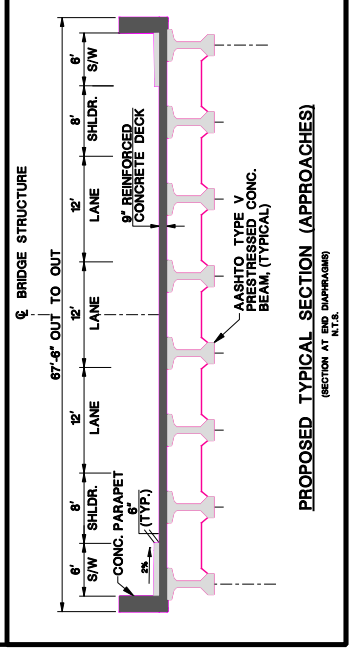
Rumson Borough
Monmouth County

Sea Bright Borough
Monmouth County

- LEGEND**
- GREEN ACRES
 - UPPER WETLAND BOUNDARY
 - WETLANDS
 - 50' WETLAND BUFFER
 - 60' R FLOODPLAIN
 - RIPARIAN BUFFER
 - NETT ISLANDS
 - SHORELINE
 - STATE ENDANGERED BEACH HABITAT
 - 100' LANE OF BOROUGH OF RUMSON
 - 100' LANE OF BOROUGH OF SEA BRIGHT
 - STATE ENDANGERED BEACH HABITAT



THIS DRAWING IS IN DRAFT FORM. PLEASE DO NOT REPLICATE. IT HAS BEEN RELEASED AS CLASSIFIED AS ADVISORY, CONSULTATIVE AND DELIBERATIVE MATERIAL PURSUANT TO N.J.S.A. 17:27A-9. IT IS INTENDED FOR REVIEW AND COMMENT PURPOSES ONLY. ANY QUESTIONS, PLEASE CONTACT: MR. JON MOREN, MONMOUTH COUNTY PROJECT MANAGER (732-386-2865; jon.moren@co.monmouth.nj.us).



DRAFT

NORTH JERSEY TRANSPORTATION PLANNING AUTHORITY

Monmouth County Bridge S-32
Rumson Road (CR 630) over Shrewsbury River
Preliminary Preferred Alternative - 3E
Two Stage Construction

Rumson Borough
Sea Bright Borough
McCormick
Lester Taylor

Monmouth County

Scale: 1"=60'
September 2012

