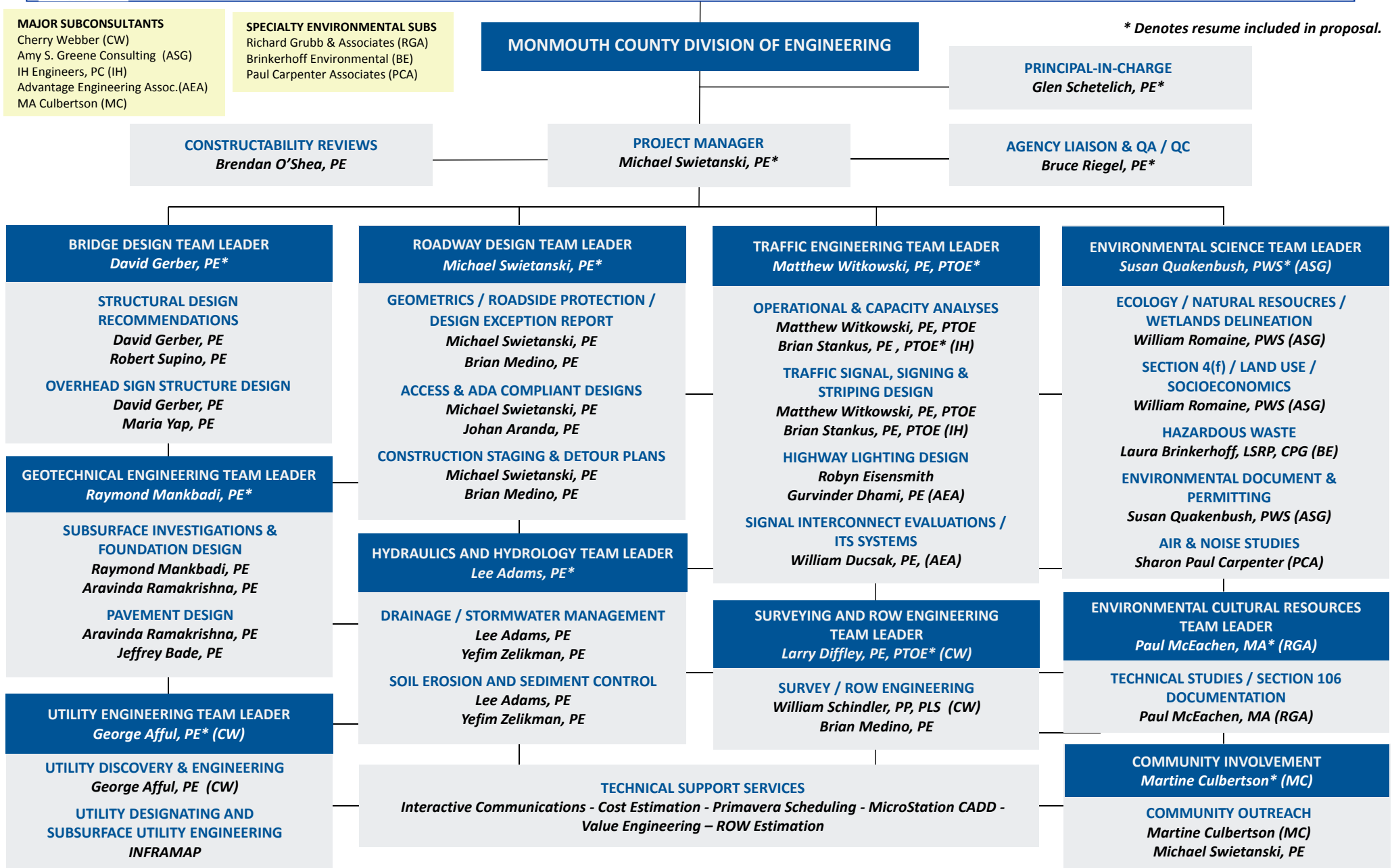




RFP# P-50-2015 PROFESSIONAL ENGINEERING SERVICES REGARDING PRELIMINARY ENGINEERING FOR ROADWAY IMPROVEMENTS TO COUNTY ROUTE 537 CORRIDOR BETWEEN SENTINEL ROAD AND U.S. ROUTE 9 INTERCHANGE IN THE TOWNSHIP OF FREEHOLD, MONMOUTH COUNTY
ORGANIZATION CHART

** Denotes resume included in proposal.*



MAJOR SUBCONSULTANTS
 Cherry Webber (CW)
 Amy S. Greene Consulting (ASG)
 IH Engineers, PC (IH)
 Advantage Engineering Assoc.(AEA)
 MA Culbertson (MC)

SPECIALTY ENVIRONMENTAL SUBS
 Richard Grubb & Associates (RGA)
 Brinkerhoff Environmental (BE)
 Paul Carpenter Associates (PCA)

MONMOUTH COUNTY DIVISION OF ENGINEERING

PRINCIPAL-IN-CHARGE
 Glen Schetelich, PE*

CONSTRUCTABILITY REVIEWS
 Brendan O'Shea, PE

PROJECT MANAGER
 Michael Swietanski, PE*

AGENCY LIAISON & QA / QC
 Bruce Riegel, PE*

BRIDGE DESIGN TEAM LEADER
 David Gerber, PE*

ROADWAY DESIGN TEAM LEADER
 Michael Swietanski, PE*

TRAFFIC ENGINEERING TEAM LEADER
 Matthew Witkowski, PE, PTOE*

ENVIRONMENTAL SCIENCE TEAM LEADER
 Susan Quakenbush, PWS* (ASG)

STRUCTURAL DESIGN RECOMMENDATIONS
 David Gerber, PE
 Robert Supino, PE

OVERHEAD SIGN STRUCTURE DESIGN
 David Gerber, PE
 Maria Yap, PE

GEOMETRICS / ROADSIDE PROTECTION / DESIGN EXCEPTION REPORT
 Michael Swietanski, PE
 Brian Medino, PE

ACCESS & ADA COMPLIANT DESIGNS
 Michael Swietanski, PE
 Johan Aranda, PE

CONSTRUCTION STAGING & DETOUR PLANS
 Michael Swietanski, PE
 Brian Medino, PE

OPERATIONAL & CAPACITY ANALYSES
 Matthew Witkowski, PE, PTOE
 Brian Stankus, PE, PTOE* (IH)

TRAFFIC SIGNAL, SIGNING & STRIPING DESIGN
 Matthew Witkowski, PE, PTOE
 Brian Stankus, PE, PTOE (IH)

HIGHWAY LIGHTING DESIGN
 Robyn Eisensmith
 Gurvinder Dhami, PE (AEA)

SIGNAL INTERCONNECT EVALUATIONS / ITS SYSTEMS
 William Ducsak, PE, (AEA)

ECOLOGY / NATURAL RESOURCES / WETLANDS DELINEATION
 William Romaine, PWS (ASG)

SECTION 4(f) / LAND USE / SOCIOECONOMICS
 William Romaine, PWS (ASG)

HAZARDOUS WASTE
 Laura Brinkerhoff, LSRP, CPG (BE)

ENVIRONMENTAL DOCUMENT & PERMITTING
 Susan Quakenbush, PWS (ASG)

AIR & NOISE STUDIES
 Sharon Paul Carpenter (PCA)

GEOTECHNICAL ENGINEERING TEAM LEADER
 Raymond Mankbadi, PE*

HYDRAULICS AND HYDROLOGY TEAM LEADER
 Lee Adams, PE*

SURVEYING AND ROW ENGINEERING TEAM LEADER
 Larry Diffley, PE, PTOE* (CW)

ENVIRONMENTAL CULTURAL RESOURCES TEAM LEADER
 Paul McEachen, MA* (RGA)

SUBSURFACE INVESTIGATIONS & FOUNDATION DESIGN
 Raymond Mankbadi, PE
 Aravinda Ramakrishna, PE

PAVEMENT DESIGN
 Aravinda Ramakrishna, PE
 Jeffrey Bade, PE

DRAINAGE / STORMWATER MANAGEMENT
 Lee Adams, PE
 Yefim Zelikman, PE

SURVEY / ROW ENGINEERING
 William Schindler, PP, PLS (CW)
 Brian Medino, PE

TECHNICAL STUDIES / SECTION 106 DOCUMENTATION
 Paul McEachen, MA (RGA)

UTILITY ENGINEERING TEAM LEADER
 George Afful, PE* (CW)

SOIL EROSION AND SEDIMENT CONTROL
 Lee Adams, PE
 Yefim Zelikman, PE

COMMUNITY INVOLVEMENT
 Martine Culbertson* (MC)

UTILITY DISCOVERY & ENGINEERING
 George Afful, PE (CW)

UTILITY DESIGNATING AND SUBSURFACE UTILITY ENGINEERING
 INFRAMAP

TECHNICAL SUPPORT SERVICES
 Interactive Communications - Cost Estimation - Primavera Scheduling - MicroStation CADD - Value Engineering - ROW Estimation

COMMUNITY OUTREACH
 Martine Culbertson (MC)
 Michael Swietanski, PE