

CONCEPT DEVELOPMENT STUDY

MONMOUTH COUNTY ROUTE 537  
CONCEPT CORRIDOR IMPROVEMENTS

FEBRUARY 2013

FREEHOLD BOROUGH  
FREEHOLD TOWNSHIP

MONMOUTH COUNTY

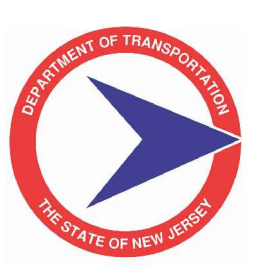
NEW JERSEY



MEMBER OF THE VAN CLEFF ENGINEERING GROUP

SCALE: 1" = 100'

THIS DRAWING IS IN DRAFT FORM. PLEASE DO NOT REPLICATE. IT HAS BEEN RELEASED AS CLASSIFIED AS ADVISORY, CONSULTATIVE AND DELIBERATIVE MATERIAL PURSUANT TO N.J.S.A. 47:1A-6. IT IS INTENDED FOR REVIEW AND COMMENT PURPOSES ONLY. ANY QUESTIONS, PLEASE CONTACT: MS. DARIA JAKIMOWSKA, MONMOUTH COUNTY PROJECT MANAGER (732-431-7760, djakimow@co.monmouth.nj.us)



CONCEPT DEVELOPMENT STUDY

MONMOUTH COUNTY ROUTE 537  
CONCEPT CORRIDOR IMPROVEMENTS

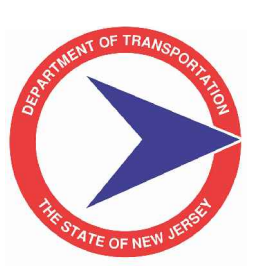
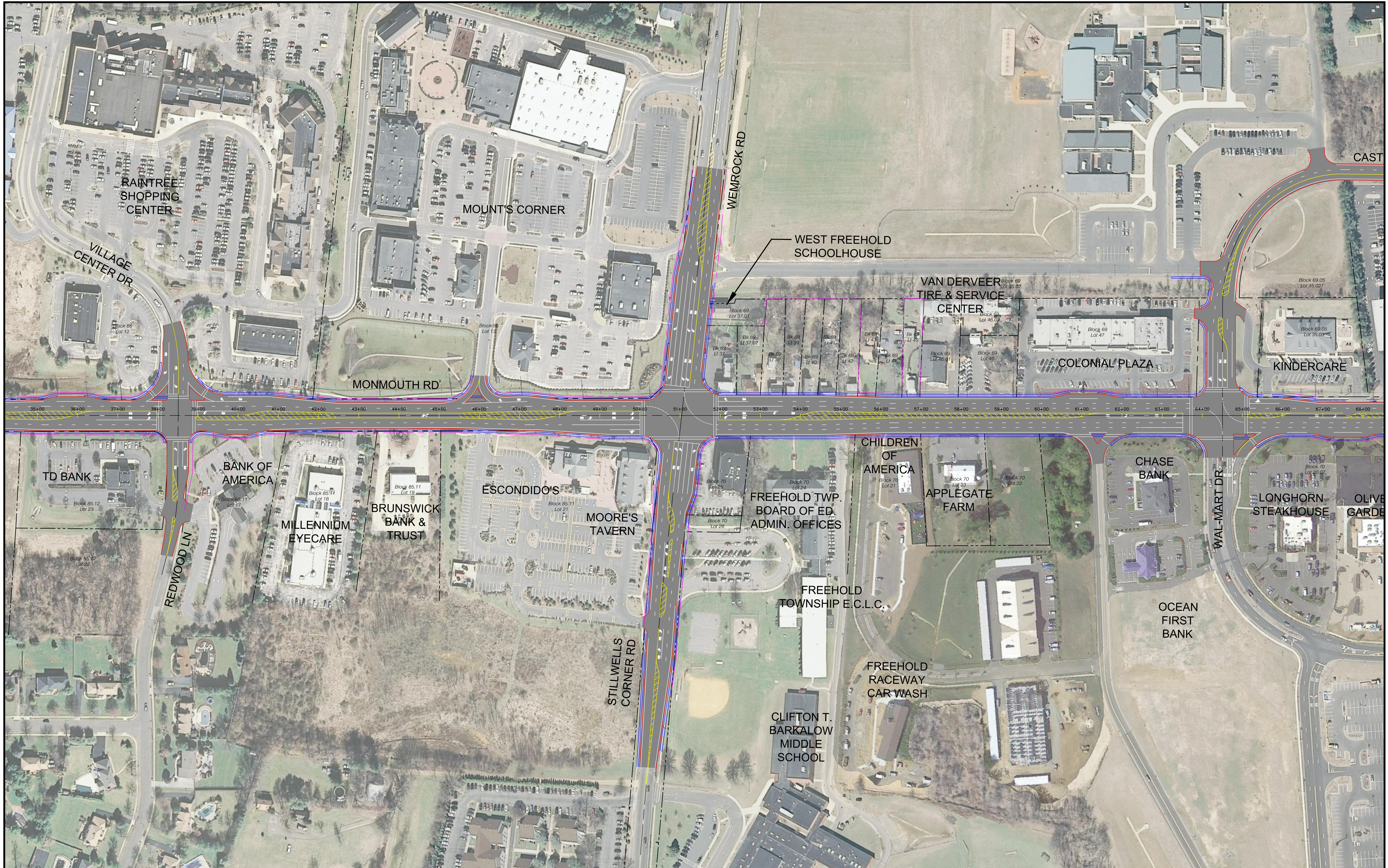
FEBRUARY 2013

FREEHOLD BOROUGH FREEHOLD TOWNSHIP MONMOUTH COUNTY NEW JERSEY



SCALE: 1"= 40'

THIS DRAWING IS IN DRAFT FORM. PLEASE DO NOT REPLICATE. IT HAS BEEN RELEASED AS CLASSIFIED AS ADVISORY, CONSULTATIVE AND DELIBERATIVE MATERIAL PURSUANT TO N.J.S.A. 47:1A-6. IT IS INTENDED FOR REVIEW AND COMMENT PURPOSES ONLY. ANY QUESTIONS, PLEASE CONTACT: MS. DARIA JAKIMOWSKA, MONMOUTH COUNTY PROJECT MANAGER (732-431-7760, djakimow@co.monmouth.nj.us)



CONCEPT DEVELOPMENT STUDY

MONMOUTH COUNTY ROUTE 537  
CONCEPT CORRIDOR IMPROVEMENTS

FEBRUARY 2013

FREEHOLD BOROUGH  
FREEHOLD TOWNSHIP  
MONMOUTH COUNTY  
NEW JERSEY



SCALE: 1" = 100'

THIS DRAWING IS IN DRAFT FORM. PLEASE DO NOT REPLICATE. IT HAS BEEN RELEASED AS CLASSIFIED AS ADVISORY, CONSULTATIVE AND DELIBERATIVE MATERIAL PURSUANT TO N.J.S.A. 47:1A-6. IT IS INTENDED FOR REVIEW AND COMMENT PURPOSES ONLY. ANY QUESTIONS, PLEASE CONTACT: MS. DARIA JAKIMOWSKA, MONMOUTH COUNTY PROJECT MANAGER (732-431-7760, djakimow@co.monmouth.nj.us)