

# NJTPA - Local Concept Development Study Monmouth County Route 537 Corridor Improvements



## Community Stakeholders Meeting

March 20, 2012



# Agenda

1. Project Overview and Background
2. Local Concept Development Process
3. Environmental Process
4. Route 537 Corridor Existing Conditions
5. Project Status
6. Project Schedule
7. Community Involvement
8. Organizational Chart
9. Project Contact Information
10. Questions and Comments

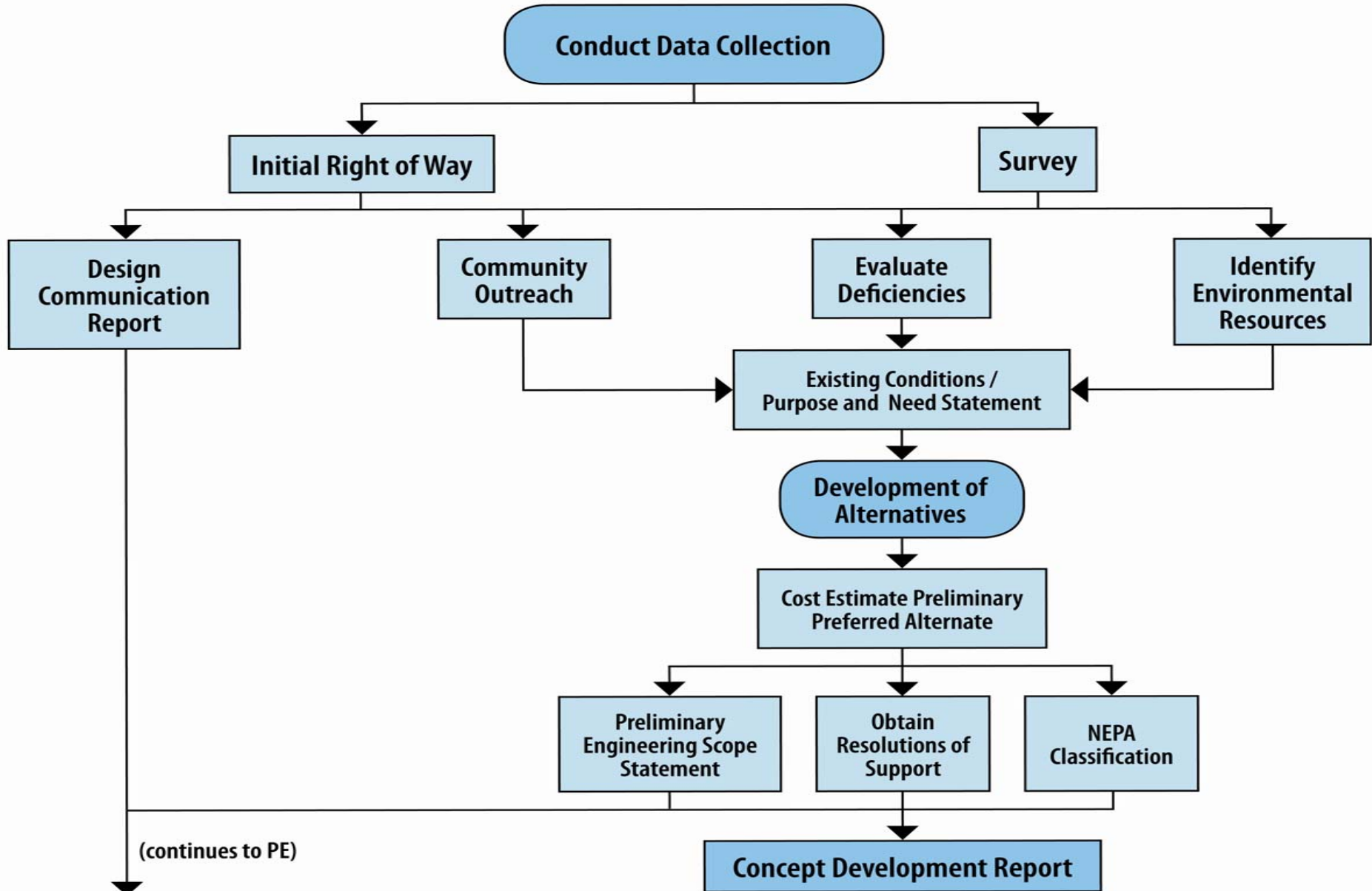
# Project Overview and Background

- MC Route 537 is a major east-west transportation corridor serving regional travel needs between Burlington, Ocean, and Monmouth Counties
- Project Study area for Route 537 is 2.8 miles (Milepost 48.65 – 51.65) in Freehold Township & Freehold Borough
- The corridor has substandard design elements, traffic congestion issues, and traffic movement capacity issues
- NJTPA/Monmouth County Local Concept Development (LCD) Study undertaken
- New program and opportunity to advance a project which includes public input

# Local Concept Development Process

Local Concept Development	Local Preliminary Engineering	Final Design/ Right of Way Acquisition	Construction
Purpose and Need Statement	Approved Design Exception Report	Construction Contract Documents and PS&E package	Completed Construction
Date Collection and Environmental Screening Report	Cost Estimates (Final Design, ROW and Construction)	Environmental Reevaluations	As-Built
Selection of Preliminary Preferred Alternative	Approved Environmental Document	Environmental Permits	Update and Finalize Design Communications Report
NEPA Classification	Approved Project Plan	Acquisition on ROW	Close-out Documentation
Concept Development Report	Preliminary Engineering Report	Update Design Communications Report	
Create Design Communications Report	Update Design Communications Report		

# Local Concept Development Process



# Environmental Process

- Federally funded project requires NEPA (National Environmental Protection Act) documentation
- Identify environmental resources and concerns
- Avoid, minimize and or mitigate impacts with Preferred Alternative
- Coordination with permitting agencies
- Process includes public input and community development

# Route 537 Corridor Existing Conditions

- More than 3,000 vehicles per hour at some intersections during highest peak period
- Multiple intersections along corridor operate at or near capacity during peak travel periods which causes traffic congestion and lengthy delays
- Several intersections have crash rates that exceed statewide averages for County roads with clearly identifiable patterns
- Numerous conflicting access points including driveways and roads which create traffic operation issues
- Insufficient or lack of outside shoulders for entire length
- No bicycle compatibility
- Gaps in existing sidewalk network

# Route 537 Corridor Existing Conditions

- Few auxiliary lanes, deceleration lanes or shoulders for turning movements at intersections as well as into various business/shopping complexes
- Substandard vertical stopping sight distance at two locations
- Substandard stopping sight distance at Enright Avenue intersection (NB onto CR 537)
- Substandard acceleration and deceleration lane lengths at Route 33 Freeway interchange
- Numerous substandard design elements at Route 537 and Route 9 Interchange

# Site Location Map



## SITE LOCATION MAP

Concept Development Study  
County Route 537 Corridor  
Borough of Freehold, Township of Freehold  
Monmouth County



# Route 537 Corridor Existing Conditions



On-going Improvements at Route 537 & Gravel Hill Road Intersection



Looking East, East of Gravel Hill Road; Note Sidewalk & Right Shoulder drop

# Route 537 Corridor Existing Conditions



Looking East, Approaching Iron Bridge Road, Note Access Management, No Bicycle/Pedestrian compatibility at businesses



Looking East, Approaching Redwood Lane/Village Center Road, Note Substandard vertical curve (WB), Sidewalk gaps, No Bicycle Access

# Route 537 Corridor Existing Conditions



Route 537 & Village Center Road/Redwood Lane Intersection, Site of higher than average crash rates



Looking East, East of Village Road, Note conflicting turning movements, Access Management, No Bicycle/Pedestrian compatibility Eastbound side

# Route 537 Corridor Existing Conditions



Route 537 & Wemrock Road/Stillwells Corner Road Intersection, Site of higher than average crash rates and failed traffic operations (LOS F) at peak periods



Wal-Mart Drive Intersection, No Bicycle Compatibility, Gaps in sidewalk network, no auxiliary lanes for turning movements

# Route 537 Corridor Existing Conditions



Rt.537 & Gibson Place Un-signalized Intersection, Site of higher than average crash rates and failure of traffic operations at peak periods



Looking East Approaching Bridge over Route 33 Freeway, Site of higher than average crash rates, substandard acceleration & deceleration lanes, gaps in sidewalk network, no bicycle compatibility, substandard vertical curve

# Route 537 Corridor Existing Conditions



Evidence of need for pedestrian and bicycle compatibility at Route 33 Freeway interchange



Another Example of Pedestrian access need near Route 33 Freeway interchange

# Route 537 Corridor Existing Conditions



Another Example of Pedestrian Access Need near Route 33 Freeway Interchange



Route 537 Bridge over Route 33 Freeway – No sidewalk on Westbound Side, No Bicycle compatibility

# Route 537 Corridor Existing Conditions



Eastbound just past bridge over Route 33 Freeway, Note Loss of sidewalk continuity Eastbound Side, No bicycle compatibility, No sidewalk Westbound Side



Eastbound Approaching Trotter's Way intersection (access to Freehold Raceway Mall), Site of higher than average accident rates

# Route 537 Corridor Existing Conditions



Looking Westbound Approaching bridge over Route 9, Interchange Operates in Failed Condition (Level of Service F) resulting in traffic congestion and delays during peak periods, No dedicated turning lanes, No bicycle compatibility, No sidewalk on Eastbound Side



Eastbound Past bridge over Route 9 approaching Route 33 Business intersection, No bicycle compatibility

# Route 537 Corridor Existing Conditions



Route 537 & Route 9 Business Intersection, Site of failed traffic operations (LOS-F) during peak periods resulting in congestion and delays



Route 9 Northbound Access Ramps to Route 537, Site of crash rate higher than statewide average, no dedicated ramp movements; must merge with local road (Barkalew Road)

# Route 537 Corridor Existing Conditions



Substandard Vertical Under – clearance at Route 537 Bridge over Route 9

# Project Status

- Work began November 2011
- Data Collection Nearly Complete
  1. Field Survey
  2. Environmental Screening
  3. Verification of Utilities
  4. Obtain Bridge Inspection Reports, Traffic Data, Accident Data
  5. Identify Existing Substandard Design Elements
  6. Stakeholders and Public Involvement
  7. Project Fact Sheet
  8. Develop Project Purpose and Need

# Project Schedule

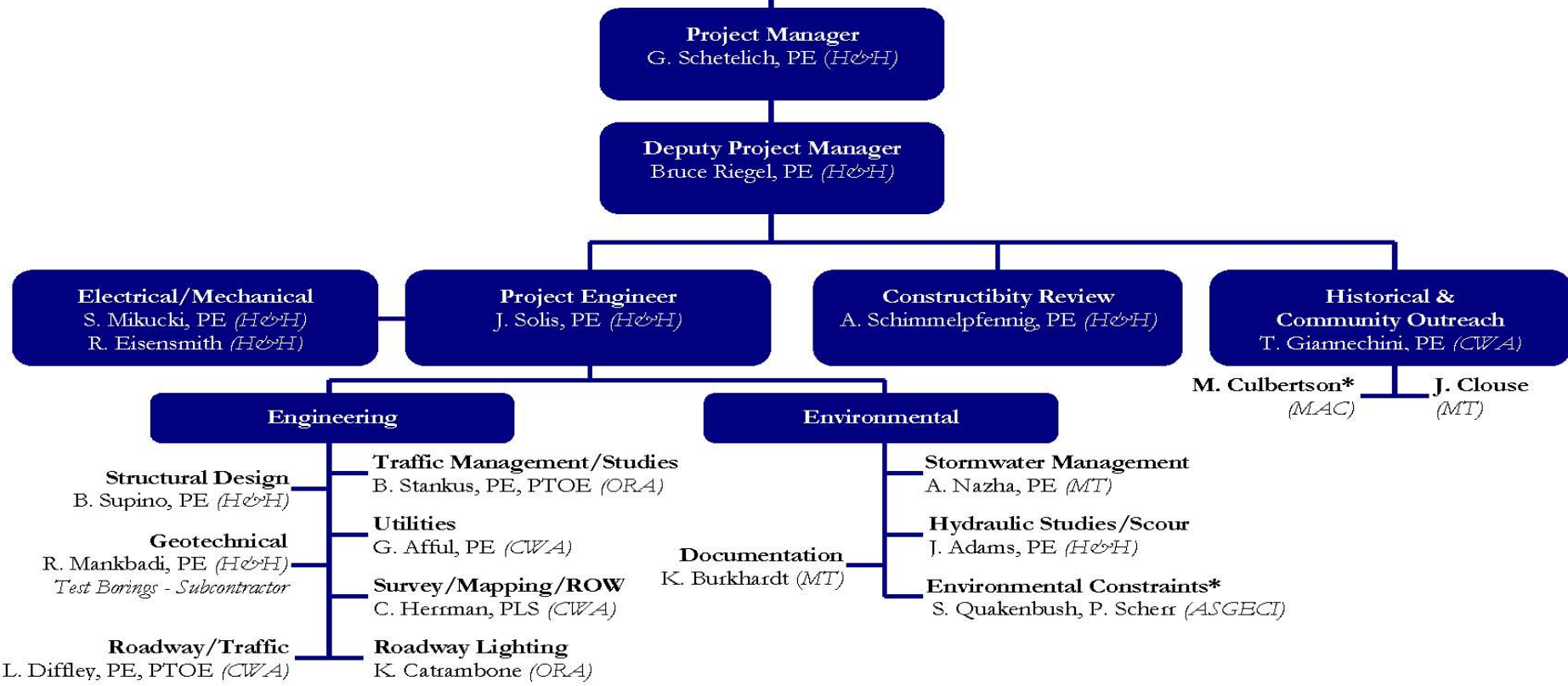
- 18 month completion schedule
- Major Milestones
  1. Project Purpose and Need – June 2012
  2. Development of Conceptual Alternatives – September 2012
  3. Select Preliminary Preferred Alternative – December 2012
  4. Submit Draft Concept Development Report – March 2013
  5. Completion of Concept Development Phase – April 2013

# Community Involvement

- Community Involvement Schedule
  1. Stakeholders Meeting No.1 – March 20, 2012
  2. Public Information Meeting for Project Purpose & Need – April 24, 2012
  3. Stakeholders Meeting No.2 for Input on Developed Alternatives – August 2012
  4. Local Officials meeting – September 2012
  5. Public Information Center for Input on Developed Alternatives & Selection of Preliminary Preferred Alternatives – November 2012
  6. Local Officials Briefing – April 2013

# Organization Chart

## LOCAL CONCEPT DEVELOPMENT STUDY FOR CONTRACT A MONMOUTH COUNTY BRIDGE S-32 AND MONMOUTH COUNTY ROUTE 537



# Project Contact Information

- Daria Jakimowska, Monmouth County Project Manager, (732) 431-7768
- Monmouth County Web site address:
  - visitmonmouth.com
  - Click “Departments”
  - Click “Engineering”
  - Click “Bridge & Road Projects”
- Note: This Power Point Presentation will be posted on the Monmouth County website.
- Written comments towards Project Purpose & Need will be received until Friday, April 27, 2012.

# Questions & Comments