

**MONMOUTH COUNTY S-31 BRIDGE
OCEANIC BRIDGE
COUNTY ROUTE 8A OVER THE NAVESINK RIVER
TOWNSHIP OF MIDDLETOWN
BOROUGH OF RUMSON**

Scoping Study
September 2011

Consultants:

Maguire Group Inc.

Lichtenstein Consulting Engineers

H2L2 Architects/Planners

ARCH², Inc.

Hunter Research, Inc.

Sponsor:

Monmouth County

In Association with:

North Jersey Transportation Planning Authority

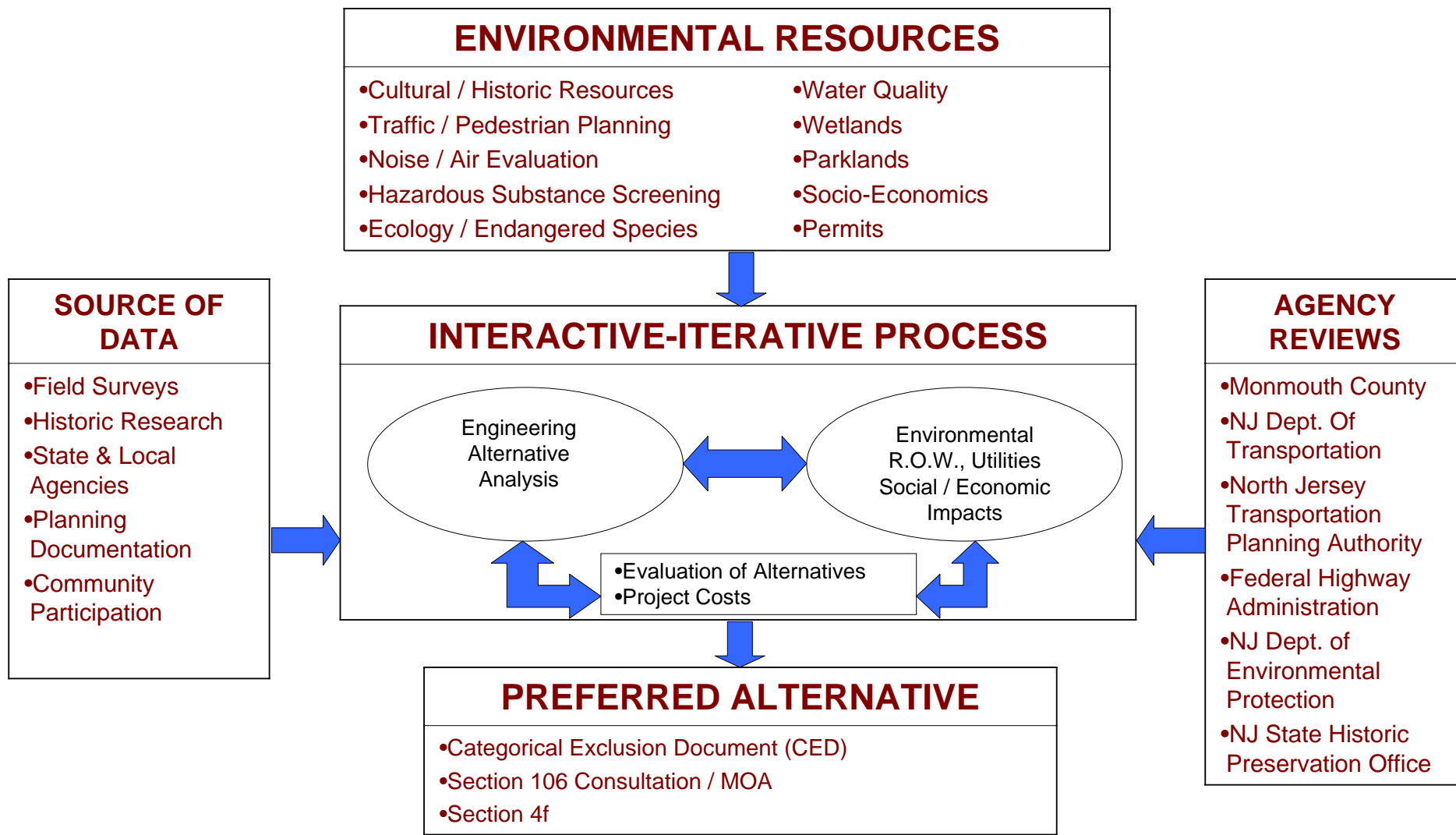
New Jersey Department of Transportation

Federal Highway Administration (FHWA)

Local Scoping Program

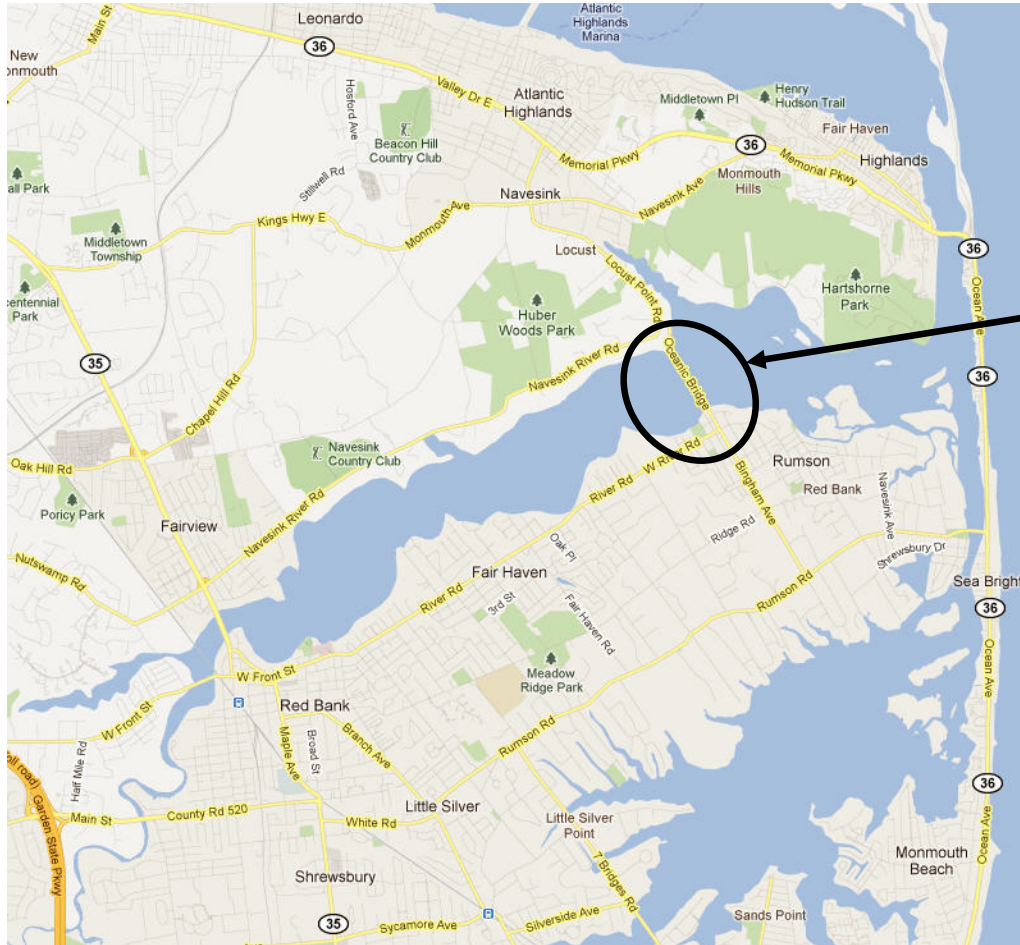
- **Federally Funded through**
 - North Jersey Transportation Planning Authority
 - New Jersey Department of Transportation
- **Advances the project through**
 - Preliminary Engineering
 - National Environmental Policy Act (NEPA) process
- **Final Product is the Preferred Alternative**
 - NJDOT and FHWA Approval
 - NEPA Clearance

Project Scoping Process



Project Location & Function

Project Location



Project Location

•2,752 L.F.

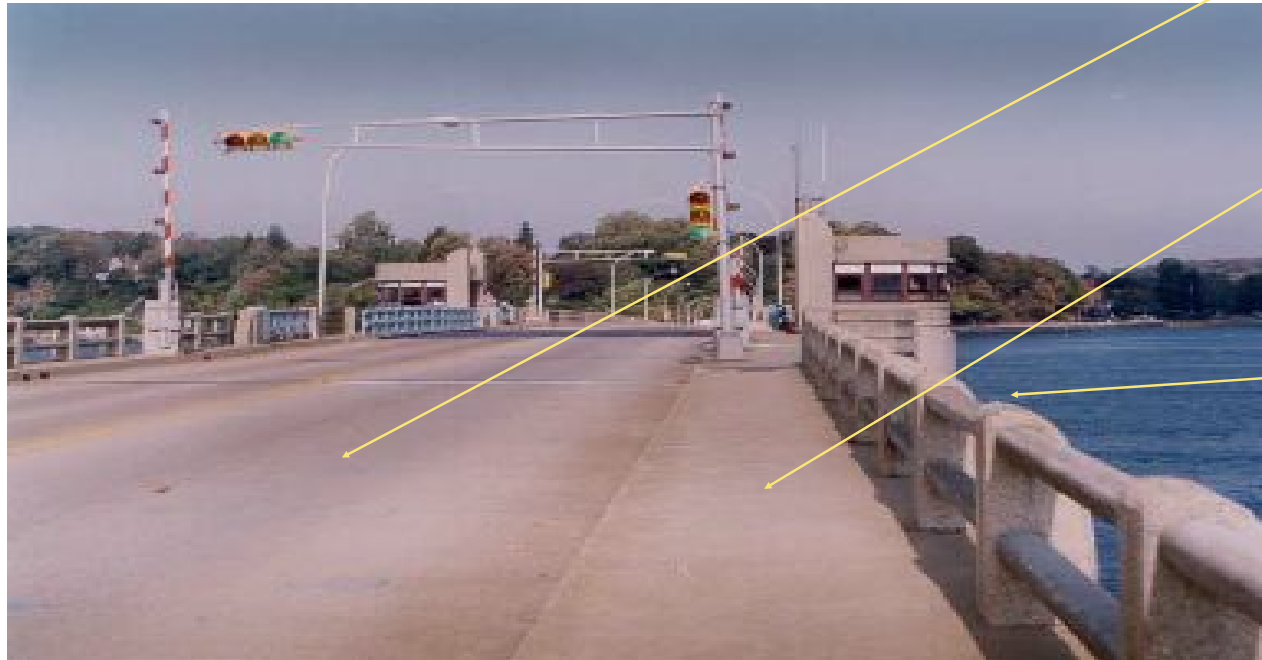
**•Largest Bridge in
Monmouth County**

•Movable Span at Center

OCEANIC BRIDGE OVER THE NAVESINK RIVER

Project Location & Function

Project Function



**2 TRAVEL LANES
(16' each)**

**SIDEWALK
(5' wide)**

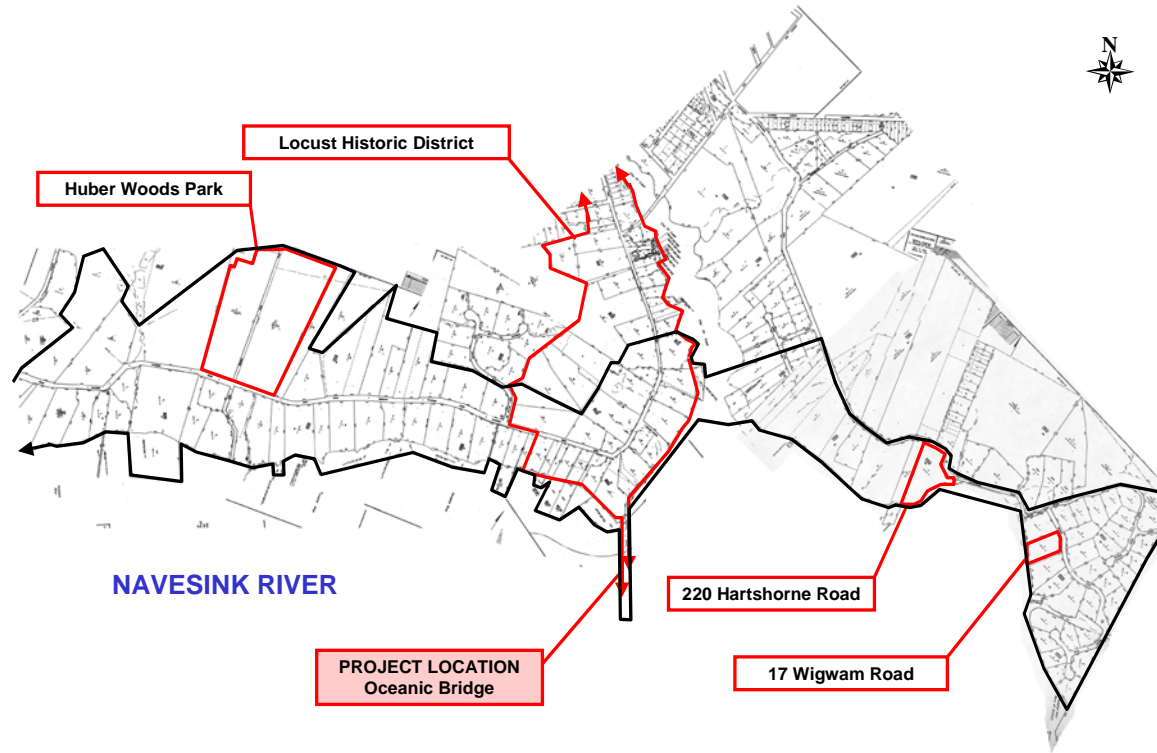
**NAVIGATIONAL
CHANNEL
(25' Vertical
Clearance)**

Historic Bridge Significance



- Constructed 1939
- Modern Architectural detailing
- Double-leaf bascule span
- Concrete operator's houses
- Rounded railings with Streamline profiles
- Representative example of prominent design firm's work (Ash-Howard-Needles & Tammen) the most prolific designers of movable span bridges in the late 1920's and 1930's in New Jersey

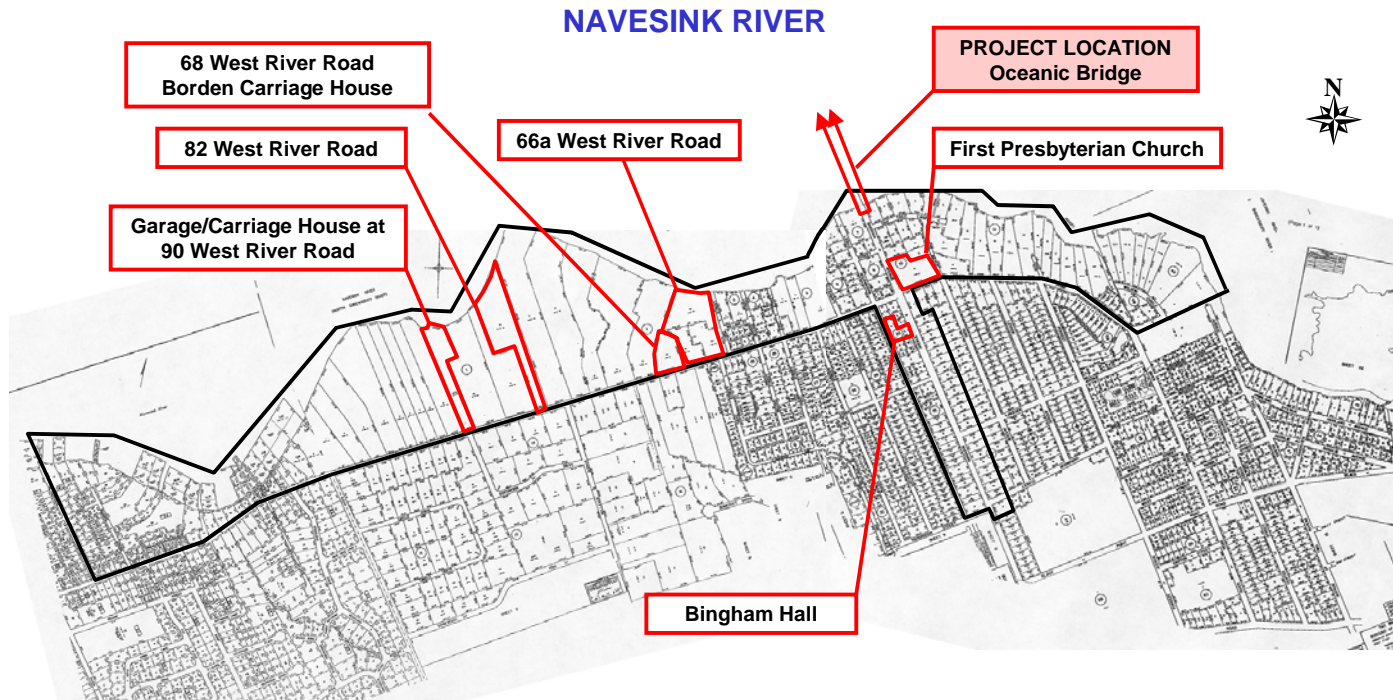
Historic Resources



Area of Potential Effects - Middletown

OCEANIC BRIDGE OVER THE NAVESINK RIVER

Historic Resources



Area of Potential Effects - Rumson

Historic Summary

- 8 resources eligible for listing in the National Register of Historic Places.
- Alternatives to avoid, minimize or mitigate adverse effects to historic resources.

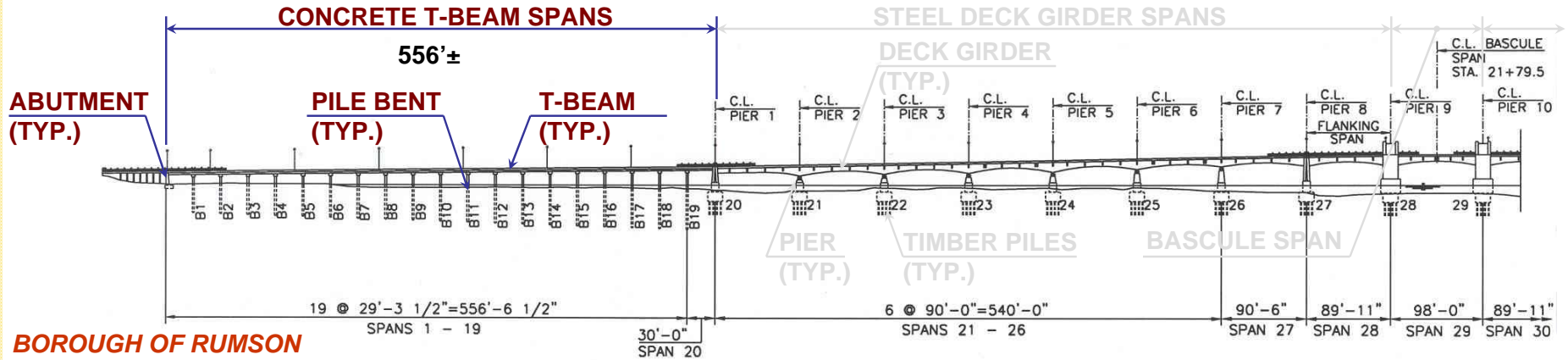
Existing Physical Condition and Capacity



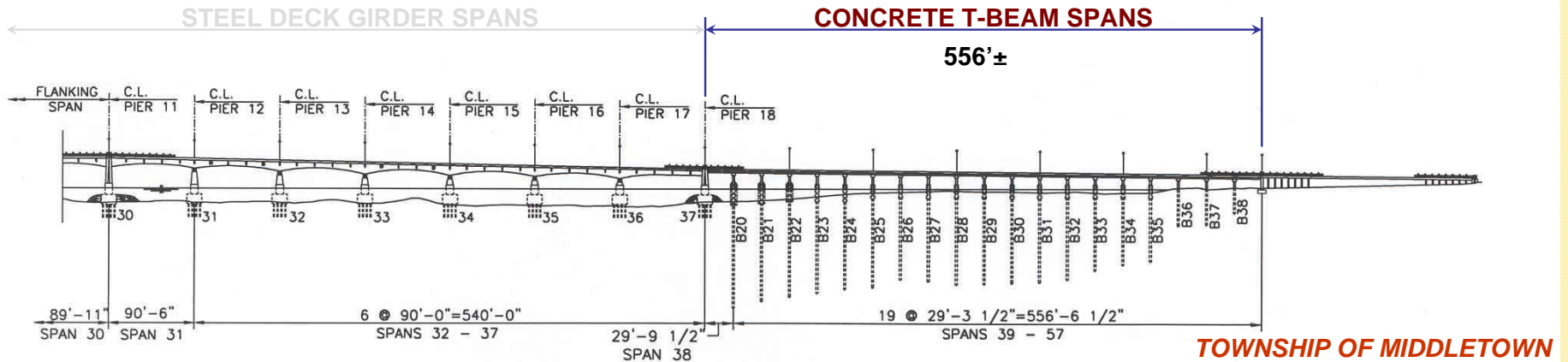
- Structural Components
 - Substructure
 - Superstructure
 - Deck
- Mechanical System
- Electrical System
- Safety Features

*Overall Physical Condition
Serious*

Existing Bridge Configuration

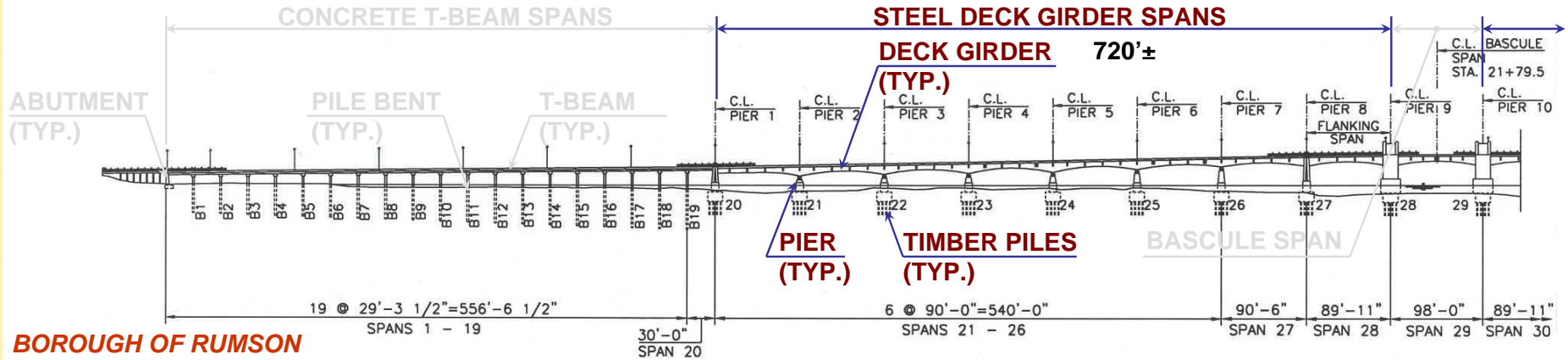


ELEVATION

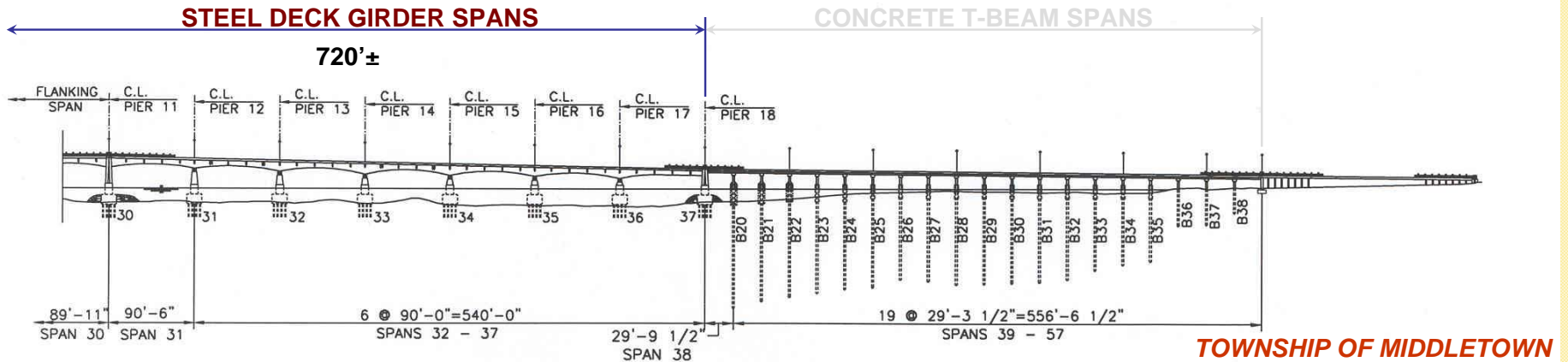


OCEANIC BRIDGE OVER THE NAVESINK RIVER

Existing Bridge Configuration

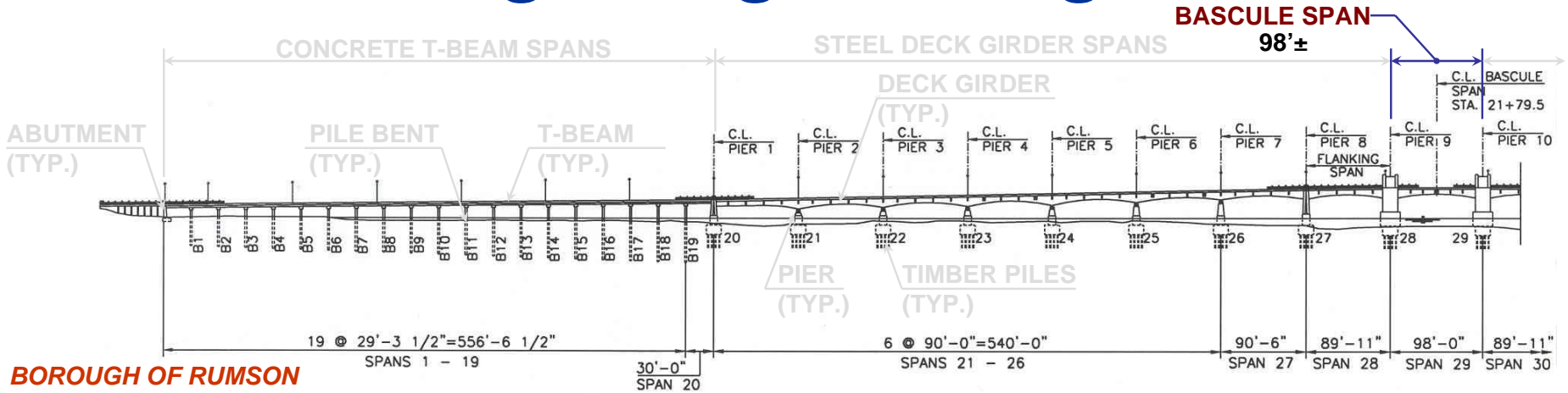


ELEVATION

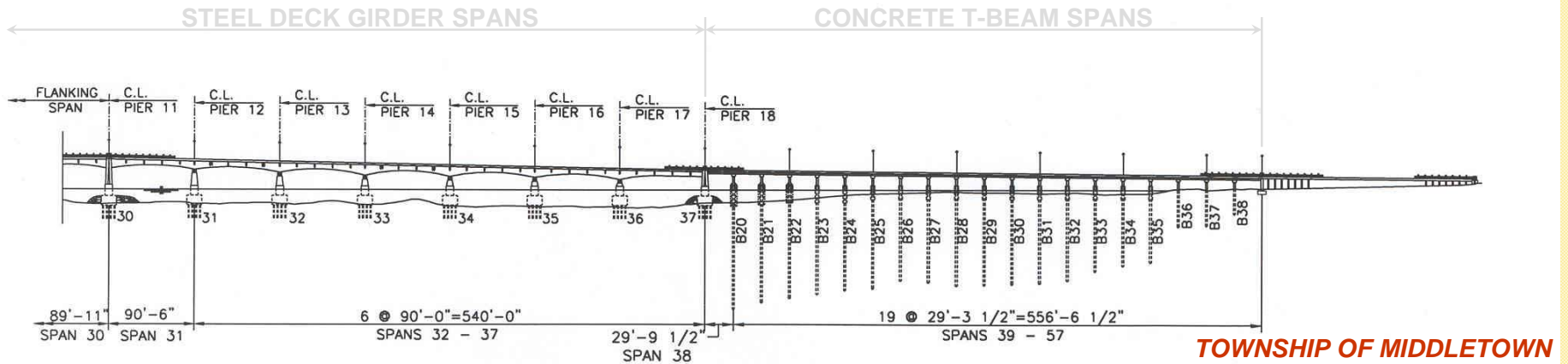


OCEANIC BRIDGE OVER THE NAVESINK RIVER

Existing Bridge Configuration



ELEVATION



OCEANIC BRIDGE OVER THE NAVESINK RIVER

Substructure

- **Abutments - *Poor Condition***
 - Widespread Fine to Medium Horizontal Cracks W/ Efflorescence and Hollow Sounding Concrete (Incipient Spalling and De-lamination)
- **Concrete Pile Bents - *Serious Condition***
 - Advanced Column Spalling
 - Widespread Spalls and Cracks in Cap Beams
 - Cap Beams Do Not Rate for HS-25 Design Loading
- **Concrete Piers - *Serious Condition***
 - Footing Seal Slab Deterioration at Piers 14 to 18 Found in 1991
 - Many Supporting Timber Piles Subjected to Marine Borer Damage
 - ***50% Reduction in Original Pile Diameter***
 - Anticipate Pile Capacity Exceeded for HS-25 Design Loading
 - Footing Voids Filled With Tremie Concrete in 1993



Superstructure



- Concrete T-Beam Spans – **Poor** Condition
 - Several Large Spalls and Debonded Reinforcing
 - T-Beams Do Not Rate for HS-25 Design Loading



- Steel Deck Girder Spans - **Poor** Condition
 - Paint System Generally Failed on All Members
 - Many Bearings Leaning and Frozen
 - Widespread Material Losses, Connection Losses and Impacted Rust
 - Suspended Girders, Floorbeams and Flanking Span Stringers Do Not Rate for HS-25 Design Loading



- Bascule Span - **Serious** Condition
 - Paint System Generally Failed on All Members
 - Extensive severe section loss with holes in all Bascule Span Structural Steel Components Jeopardize the Structural Integrity
 - Girders and Stringers Do Not Rate for HS-25 Design Loading

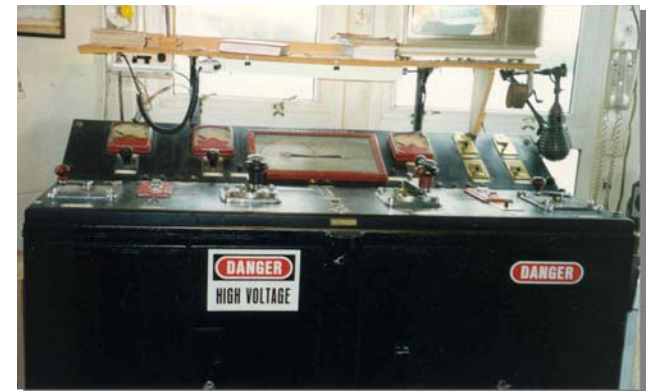
Mechanical System

- **Bearings**
 - Extensive Corrosion
 - Web Holes at Bearing Housing Supports
- **Couplings**
 - Obsolete Design
- **Open Gearing**
 - Light to Heavy Corrosion at Racks and Pinions
- **Speed Reducers**
 - Significant Corrosion at Interface of Structural Supports and Concrete
- **Span Motors**
 - Significantly Undersized Per AASHTO Power Requirements
 - Major Mechanical Components Do Not Meet Standards with a Motor Sized to Present AASHTO Requirements
- **Trunnion Assemblies**
 - Corrosion Adjacent to Bascule Girders
 - Trunnions and Trunnion Bearings Significantly Overstressed



Electrical System

- **Electric Service**
 - Liquid Filled Transformers Exhibit Signs of Leakage and Aging (Possible PCBs)
- **Power Distribution and Control**
 - Original to Bridge
 - “Live” Front – Danger to Operators and Maintainers
- **Control Desk**
 - Obsolete, Inoperable and Unreliable Components
- **Span Motors**
 - Obsolete, Inefficient Design
 - Design Lives Exceeded
- **Brakes**
 - Obsolete, Replacement Parts No Longer Available
- **Lock Motor and Brake**
 - Extensive Signs of Aging and Physical Distress
- **Limit Switches and Transmitters**
 - Original to Bridge, Exhibit Device Failure and/or Have Been Defeated



Safety Features



- **Bridge Railings**
 - Inadequate as Vehicular Railings
 - Geometrically and Structurally Insufficient
 - Inadequate as Pedestrian and Bicycle Railings
 - Insufficient Height and Rail Openings Larger Than Permitted
- **Traffic Gates and Lights**
 - Operational, But in Poor Physical Condition
- **Resistance Barriers**
 - Manually Operated – Requires Second Person for Operation of Bridge

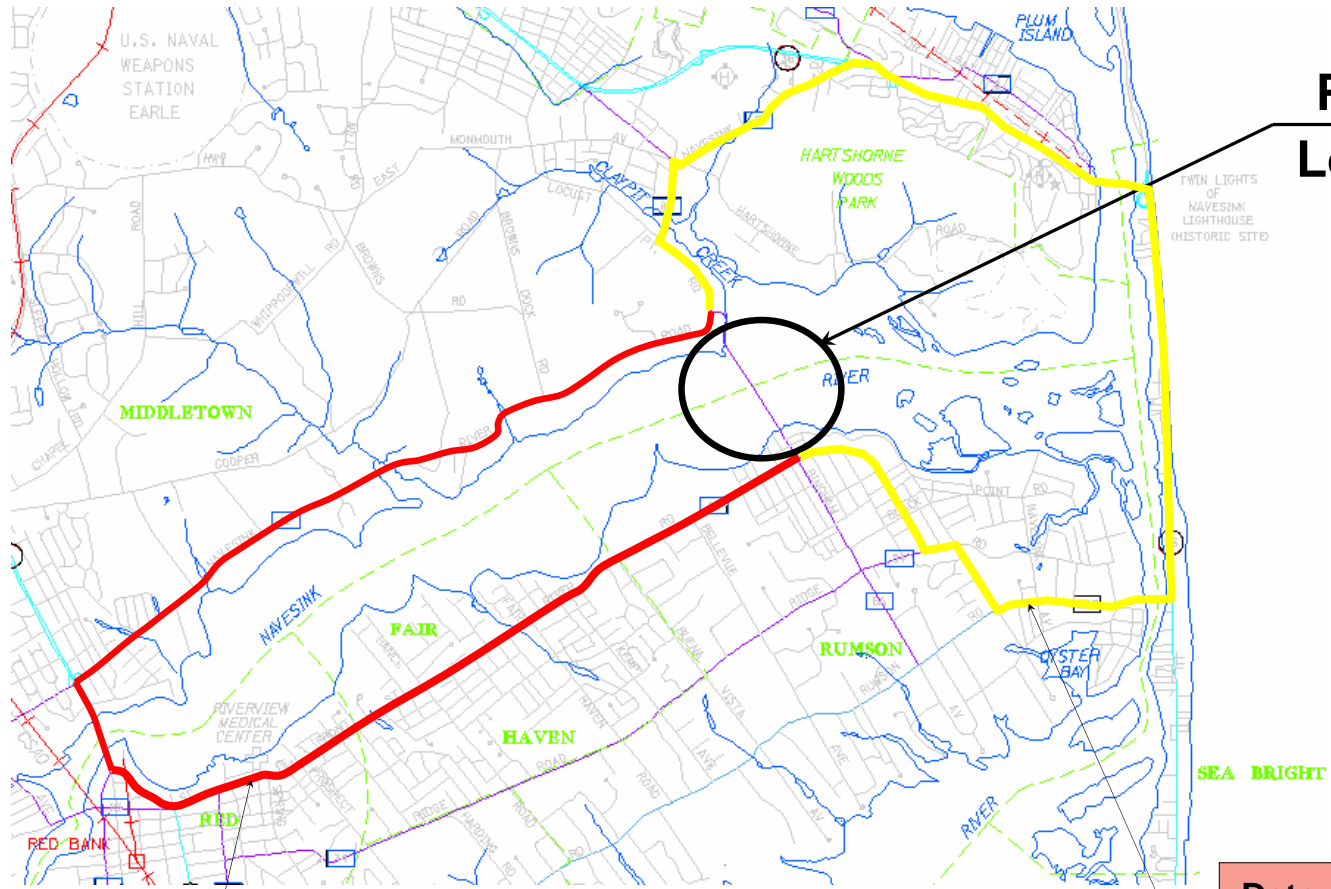
Project Need

- Based on the Above Conditions, the Project is Driven by Three (3) Basic Needs:
 - Improve the Physical Condition of the Bridge to Provide a Reliable Crossing
 - Provide Adequate Structural Capacity
 - Improve Safety Features in Accordance with Present Standards

Bridge Repair Log

Date of Repair	Description of Repair	Contractor	Cost
4/18/2008	Repairs to Concrete Deck and Curb Spalls	Monmouth County Highway Department	\$7,678.00
7/15/2008	Replacement of Tide Boards, Removal of Protruding Hardware, and replacement of Navigational Lights	IEW Construction Group	\$12,000.00
9/9/2008	Repairs to Deck Spalls, Deck Joints and Curbs. Includes Removal of Deteriorated Concrete/Rebar and Form/Pour Concrete	H&G Contractors	\$652,947.00
12/8/2008	Snooper: Inspection Work & Miscellaneous Repairs	IEW Construction Group	\$23,282.65
4/14/2009	Gusset Plate and Diagonal Work	IEW Construction Group	\$5,504.00
5/13/2009	Snooper: Inspection Work – Removal of Catwalk	IEW Construction Group/Bridge Department	\$18,537.50
5/13/2009	Replacement of Tide Boards, Removal of Protruding Hardware, and replacement of Navigational Lights	IEW Construction Group	\$8,186.00
6/12/2009	Bascule Span Balancing – Plate Installation on Toe Floor Beam	IEW Construction Group	\$27,761.81
7/1/2009	Gusset Plate and Angle Repairs	IEW Construction Group	\$22,846.51
9/9/2009	South Approach Void - Sinkhole	Monmouth County Highway Department	\$15,000.00
9/21/2009	Snooper: Inspection Work	IEW Construction Group	\$9,763.18
10/13/2009	North Bascule Leaf Binding – Buckled Stringer – Grinding Repair	Monmouth County Bridge Department	\$10,000.00
10/27/2009	Snooper: Inspection Work	IEW Construction Group	\$2,316.00
11/3/2009	North Bascule Leaf Binding – Buckled Stringer – Grinding Repair	Monmouth County Bridge Department	\$6,500.00
12/18/2009	H&H Design Repair	H&H	\$54,350.00
12/7/20	IIS: Monitoring and Design	IIS	\$143,100.00
12/18/2009	Snooper: Inspection Work/Monitoring Devices	IEW Construction Group	\$54,797.31
12/27/2009	Bus Arm Repair-Over Amperage Problem	Monmouth County Bridge Department	\$7,500.00
1/5/2010	Timber Blocking – Bascule Span Stringers and Shim Live Load Anchors – IIS Testing	IEW Construction Group	\$32,824.11
1/25/2010	Snooper: Inspection Work/Span Locks/ H&H - IIS Testing	IEW Construction Group	\$3,361.00
6/25/2010	Steel Plate Repair to Bascule Span Girders & Counter Weight Balancing	IEW Construction Group	\$191,217.17
7/27/2010	Snooper: Inspection Work/ Span Locks H&H – IIS Testing	IEW Construction Group	\$4,206.00
9/17/2010	Concrete T-Beam Repair – Middletown Approach Slabs	IEW Construction Group	\$9,983.81
10/18/2010	Snooper: Inspection Work/Span Locks/H&H – IIS Testing	IEW Construction Group	\$4,419.32
Total			\$1,328,081.37

Construction Detour



Project Location

Detour A = 8.3 Miles

Detour B = 9.1 Miles

OCEANIC BRIDGE OVER THE NAVESINK RIVER

Upcoming Bascule Span Repairs

1) Purpose

- Continuing Deterioration of the Steel Members on the Bascule. Analytical Modeling and State of the Art Technology to Assess the Actual Remaining Capacity of Similar Bridge Structures.

2) Scope Of Work

- Rehabilitation of Bascule Span – Includes Removal of Existing Grid Deck, Roadway Purlins, Stringers, Designated Floor Beams, Catwalk and Span Lock Machinery
- Construct New Grid Deck, Stringers, Floor Beams, Supporting Steelwork, Catwalk, Structural Steel Strengthening Repairs, Mechanical/Electrical Repairs, Hand/Power Tool Cleaning, and Painting Existing Bascule Pan Steel.

Upcoming Bascule Span Repairs

- Bridge Closed: October 17, 2011
 - Detour in place.

Bridge Re-opened : May 20, 2012

Project Completion: June 10, 2012

Navigational Requirements

- One Leaf Operation @ all times

Monmouth County

- Sign and Implement Detour
- October 17 thru May 20, 2012

Result –

- Repairs will Allow Load Posting to be Increased.

Alternatives Development

I - No Build

Rehabilitation

- II - Rehabilitation
- IIA - Rehabilitation & Replace Bascule Span

Replacement on Existing Alignment

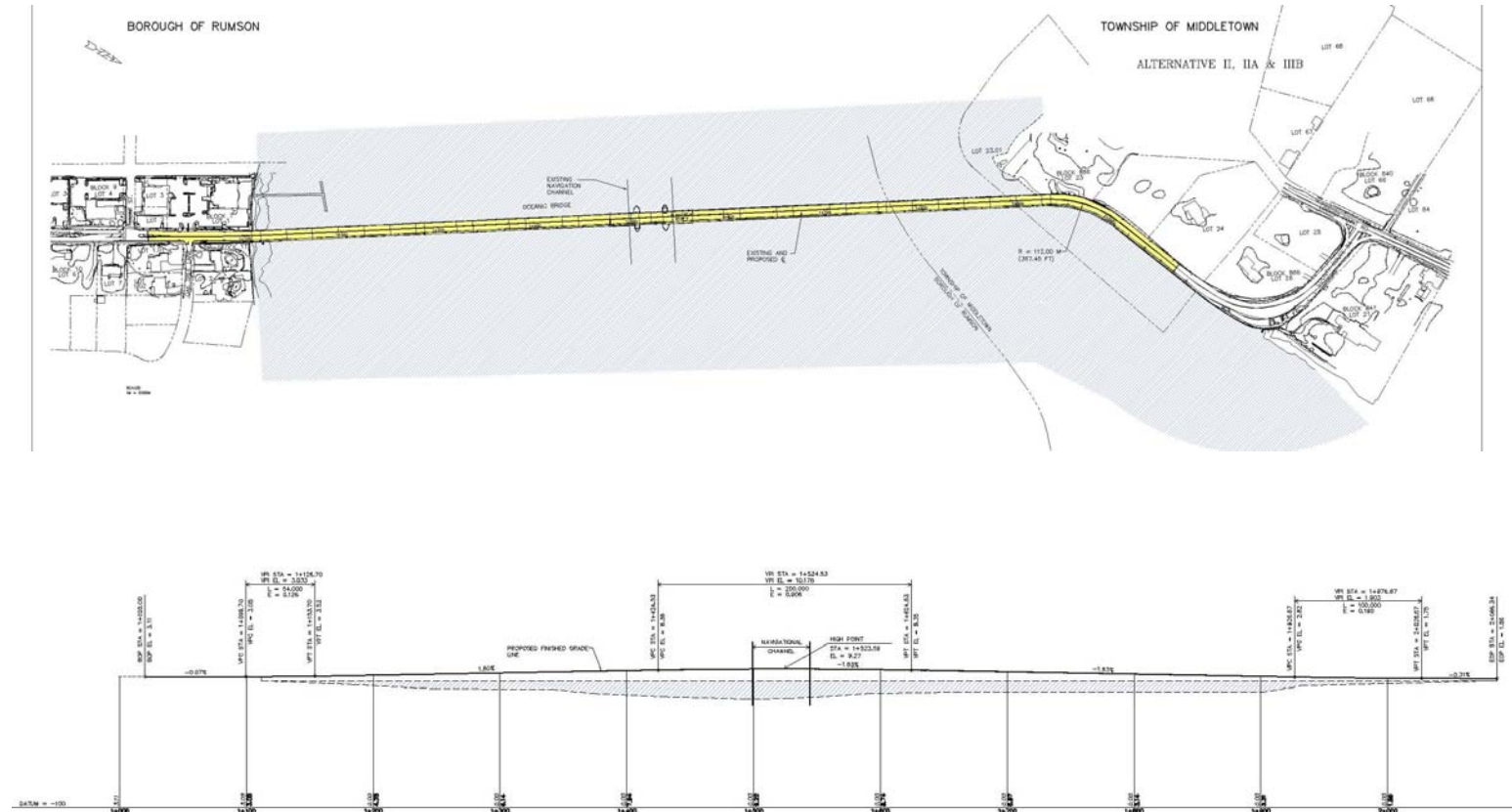
- IIIA - High Level – Fixed
- IIIB - Low Level – Movable

Replacement on New Alignment

- IVA - High Level – Fixed
- IVB - Low Level – Movable

V - Remove Bridge

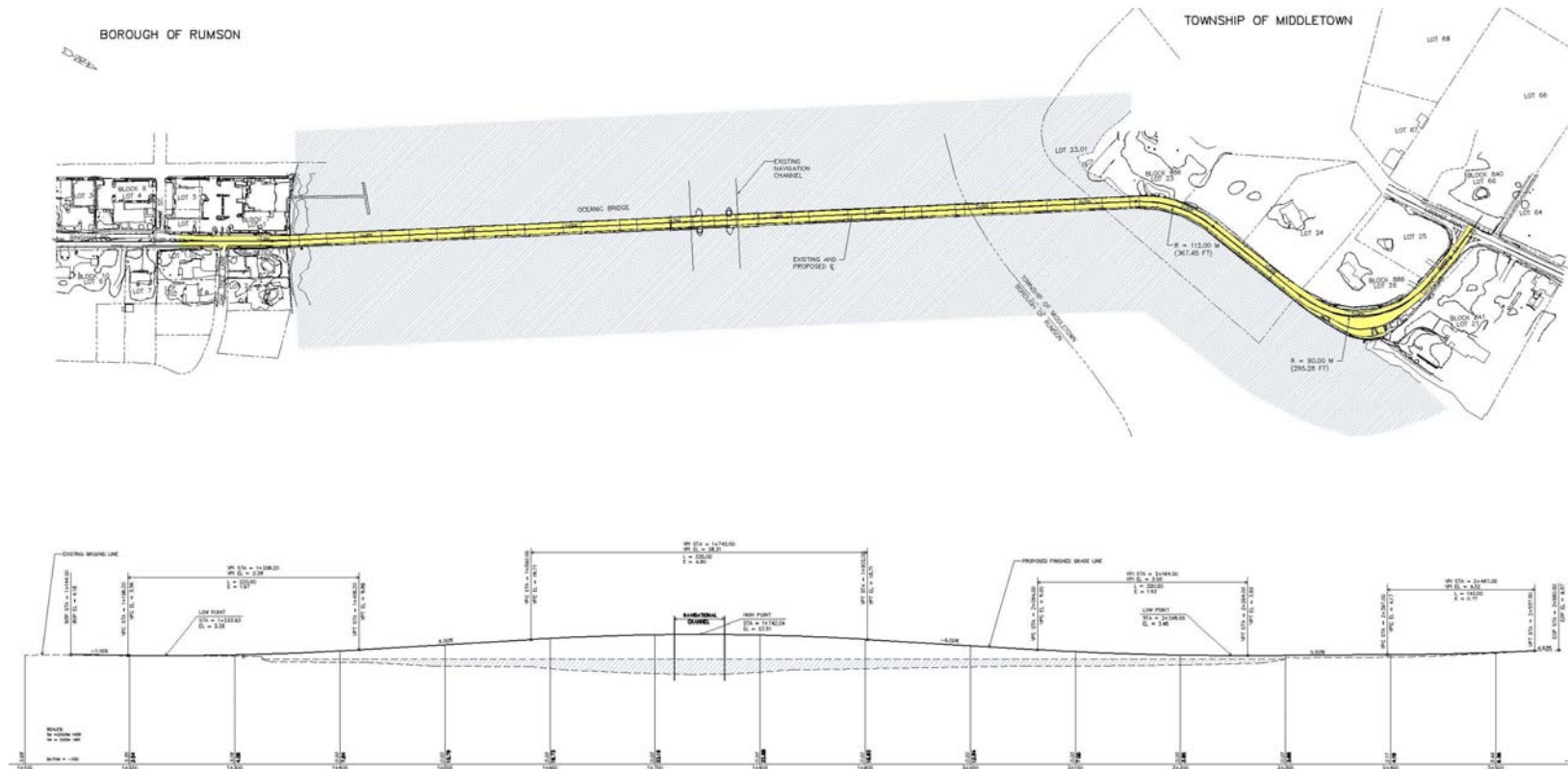
Alternative II, IIA & IIB (Rehabilitation or Replacement alternatives on Existing Alignment) Low Level Movable Bridge



OCEANIC BRIDGE OVER THE NAVESINK RIVER

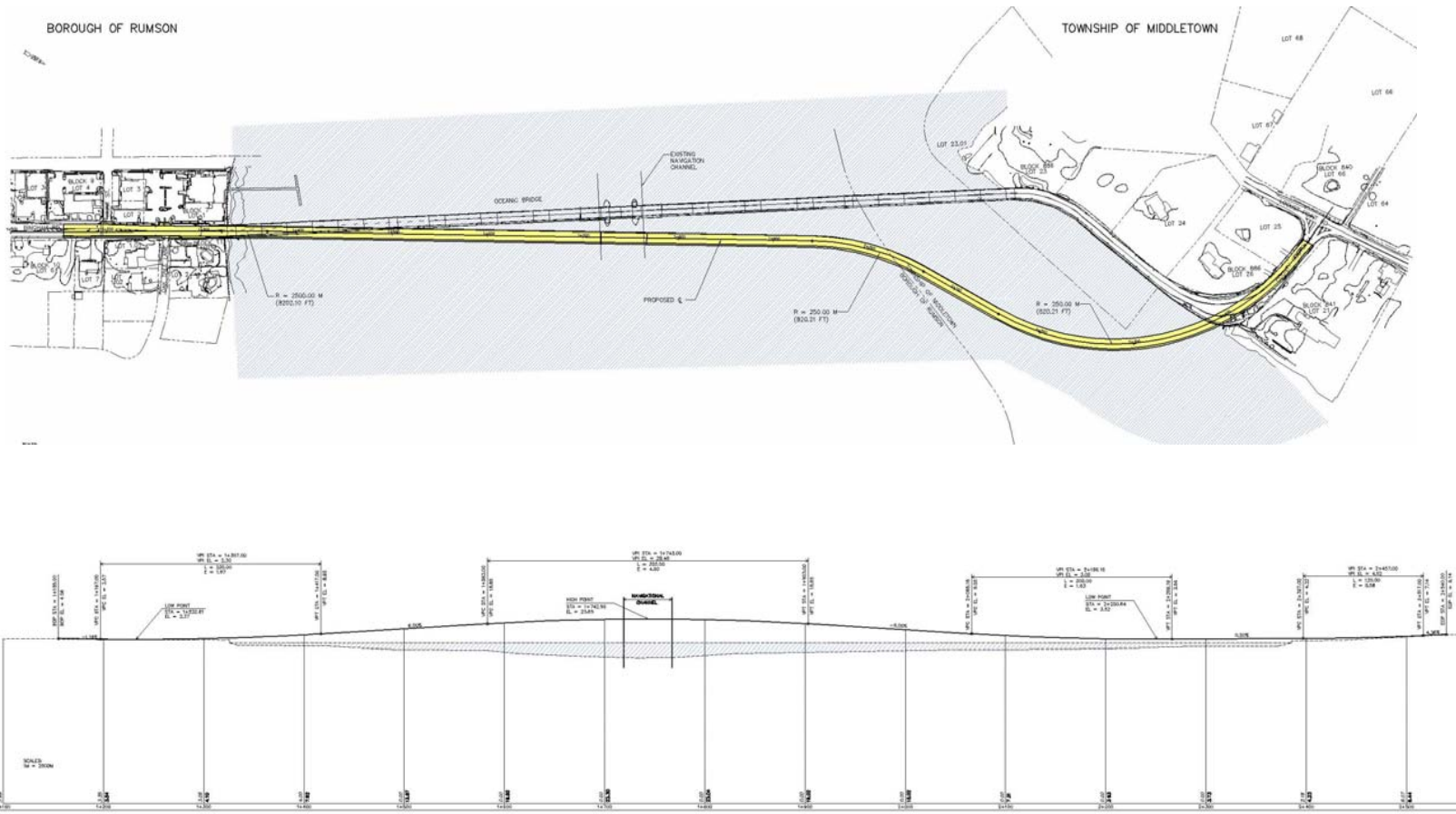
Alternative IIIA

(Replacement Alternative on Existing Alignment)
High Level Fixed Span Bridge



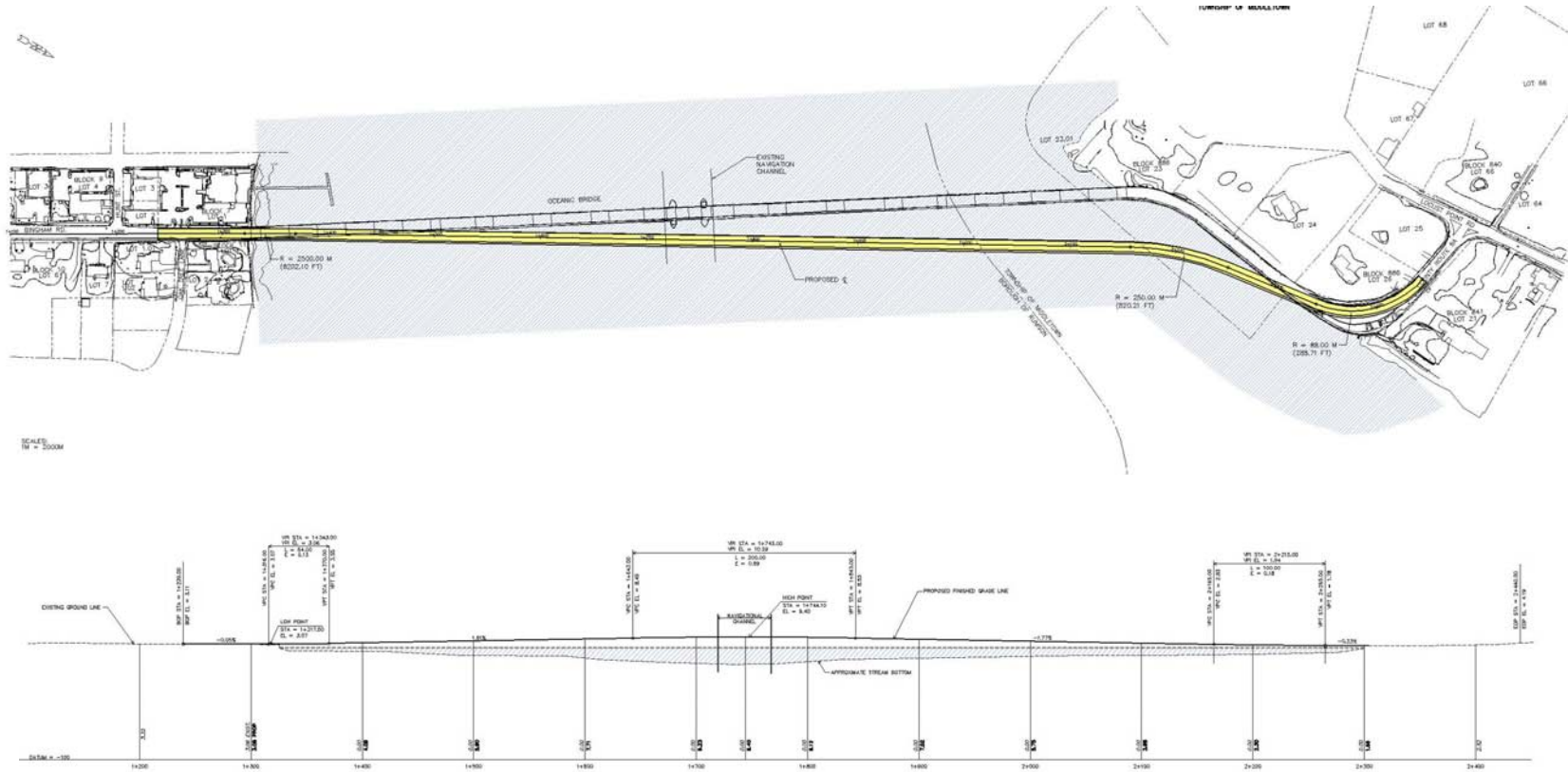
OCEANIC BRIDGE OVER THE NAVESINK RIVER

Alternative IVA (Replacement Alternative on New Alignment) High Level Fixed Span Bridge



OCEANIC BRIDGE OVER THE NAVESINK RIVER

Alternative IVB (Replacement Alternative on New Alignment) Low Level Movable Bridge



OCEANIC BRIDGE OVER THE NAVESINK RIVER

Alternatives shaded in yellow are not feasible

DRAFT SUMMARY MATRIX

Alternative	I No Build	II Rehabilitation	IIA Rehabilitation (Replace Bascule Span)	IIIA Replace Bridge Existing Alignment (High Level Fixed)	IIIB Replace Bridge on Existing Alignment (Low Level Movable)	IVA Replace Bridge New Alignment (High Level Fixed)	IVB Replace Bridge New Alignment (Low Level Movable)	V Remove Bridge
Meets Project Need	No	No	No	No	No	Yes	Yes	No
Historic Impact	None	No Adverse Effect	Adverse Effect	Adverse Effect	Adverse Effect	Adverse Effect	Adverse Effect	Adverse Effect
Architectural Design Mitigation	N/A	Good	Good	Poor	Good	Poor	Good	N/A
Environmental Impacts	None	Minimal (Temporary)	Minimal (Temporary)	Minor	Minor	Minor	Minor	Minimal (Temporary)
Right-of-Way Takings	None	None	None	None	None	None	None	None
Construction Cost	\$0	\$37,500,000	\$38,800,000	\$34,500,000	\$37,000,000	\$41,500,000	\$37,000,000	\$8,000,000
Life Cycle Cost	\$46,800,000	\$29,550,000	\$27,550,000	\$8,000,000	\$10,000,000	\$8,000,000	\$10,000,000	\$0
Operating Costs	\$10,650,000	\$10,650,000	\$10,650,000	\$0	\$10,650,000	\$0	\$10,650,000	\$0
TOTAL COST	\$57,450,000	\$77,700,000	\$77,000,000	\$42,500,000	\$57,650,000	\$49,500,000	\$57,650,000	\$8,000,000
Detour (Months)	N/A	12: Closed 18: 1-Way	12: Closed 18: 1-Way	30: Closed	30: Closed	6: Closed	6: Closed	Indefinite
Construction Duration	NA	2 ½ years	2 ½ years	2 ½ years	2 ½ years	2 years	2 ½ years	N/A

Bridge Architecture

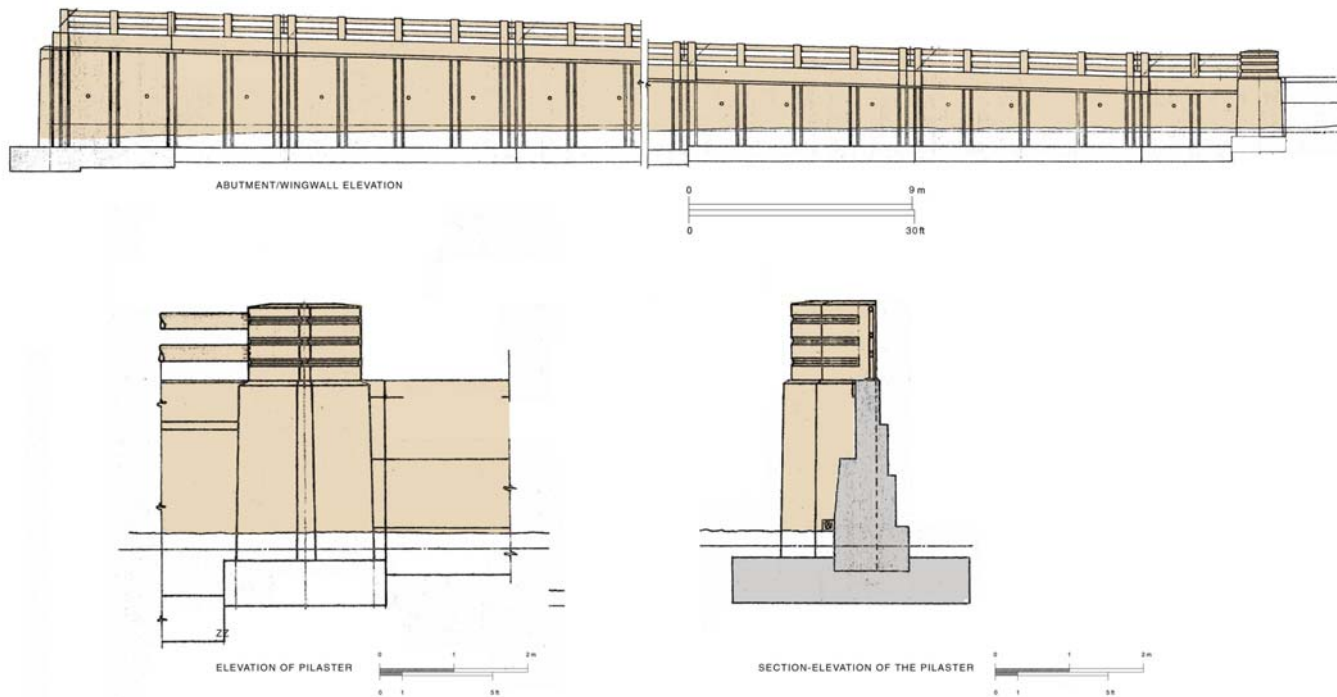
Photos of Existing Bridge



OCEANIC BRIDGE OVER THE NAVESINK RIVER

Bridge Architecture – Low Alternatives

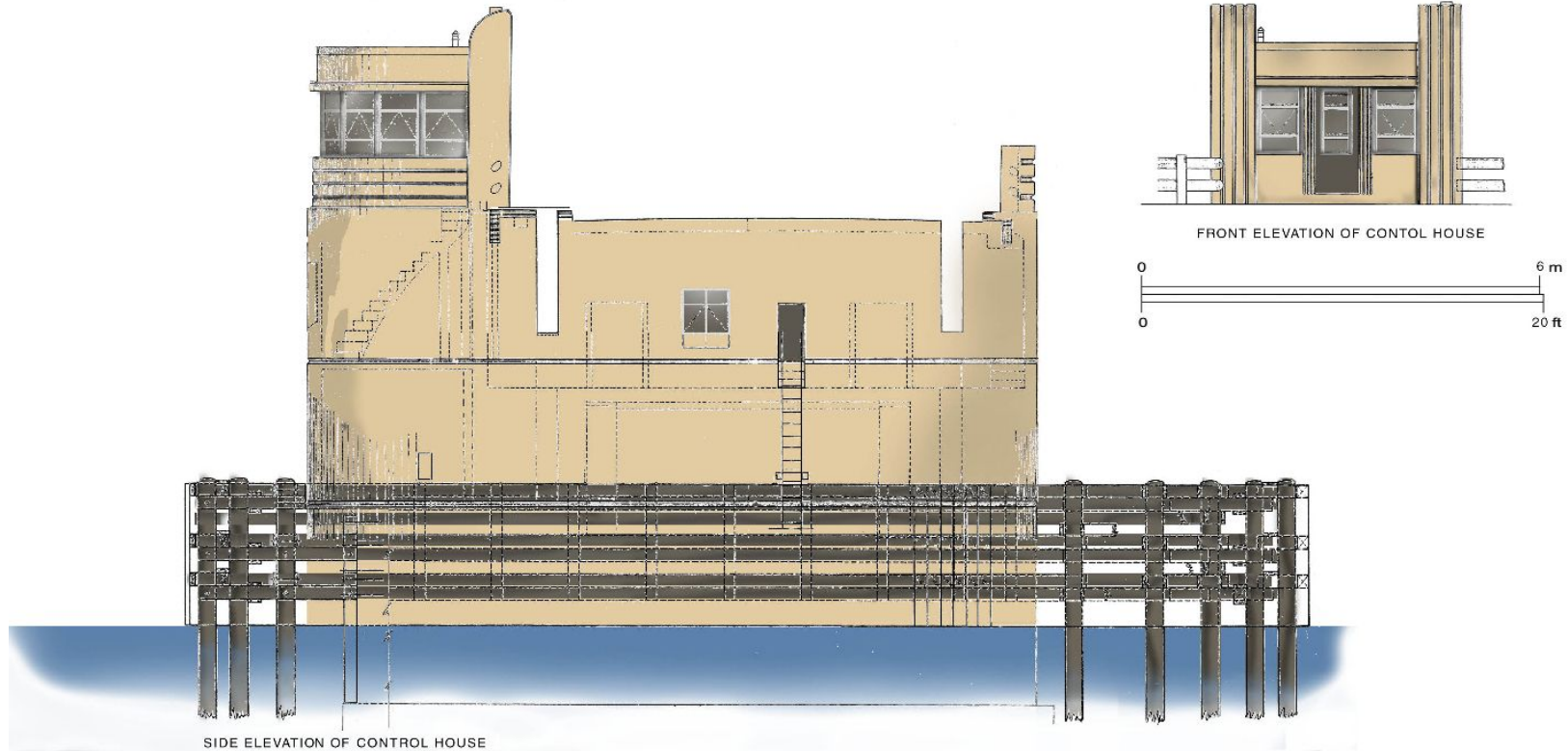
Retaining Wall



OCEANIC BRIDGE OVER THE NAVESINK RIVER

Bridge Architecture – Low Alternatives

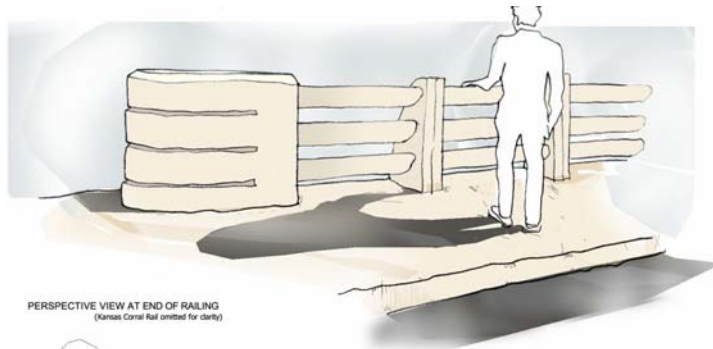
Control House



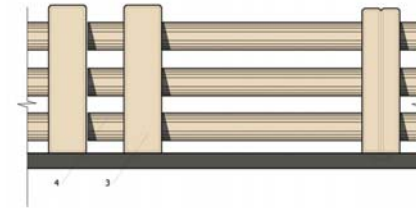
OCEANIC BRIDGE OVER THE NAVESINK RIVER

Bridge Architecture – Low Alternatives

Alternative Railing

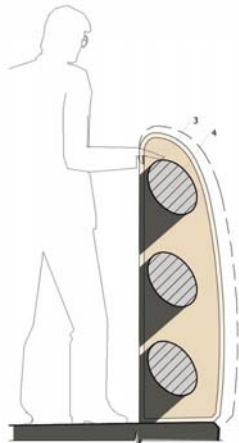


PERSPECTIVE VIEW AT END OF RAILING
(Kansas Corral Rail omitted for clarity)

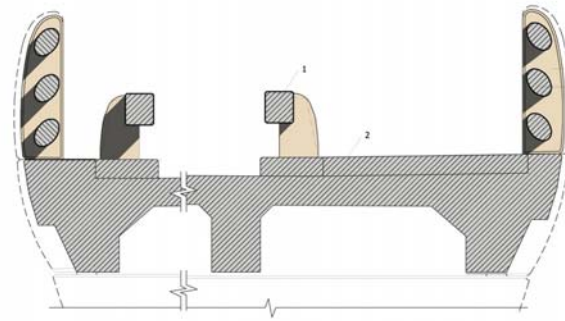


ELEVATION at WALKWAY

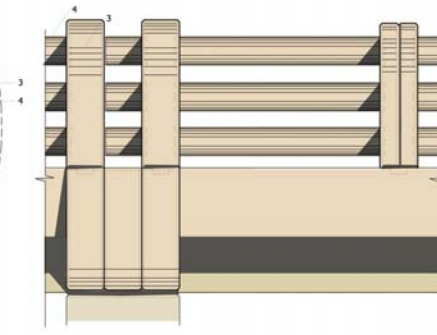
- 1 Modified Kansas Corral Rail
- 2 6' Wide Concrete Pedestrian Walkway
- 3 Replicated Reinforced Concrete Post
- 4 Replicated Reinforced Concrete Rail



POST at BENT
0 0.5 m 1 2 ft



SECTION at INTERMEDIATE POST



EXTERIOR ELEVATION
0 1 2 m 0 1 5 ft

OCEANIC BRIDGE OVER THE NAVESINK RIVER

Bridge Architecture – Low Alternatives

Architectural Rendering



OCEANIC BRIDGE OVER THE NAVESINK RIVER

Bridge Architecture – High Alternatives

Architectural Rendering



OCEANIC BRIDGE OVER THE NAVESINK RIVER

Summary

1. Rehabilitation or Replacement
2. Horizontal Alignment
 - a. Existing – 30 month detour
 - b. New – 6 month detour
3. Vertical Alignment
 - a. Low Level Movable
 - b. High Level Fixed
4. Project Costs
5. Mitigate Historic Impacts
6. Public Input
7. Develop Initially Preferred Alternative
Municipal Resolutions