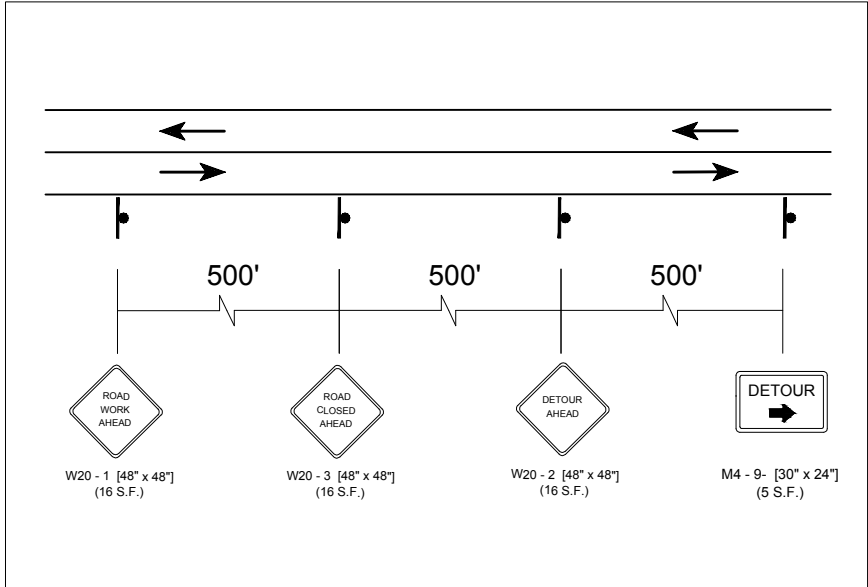



PLOTTED: 4-13-17 L:\J.F. KIELY SERVICE CO\DRAWING\TRAFFIC PLANS\KINGS HIGHWAY, MONMOUTH COUNTY, NJ\KINGS HIGHWAY, MONMOUTH COUNTY, NJ PHASE 3.DWG (TP1)



<b>DETOUR PLAN PHASE 3</b>			
<b>KINGS HIGHWAY AT CHURCH ST MIDDLETOWN, NJ</b>			
PROJECT No. -			
 <b>Traffic Plan</b> <small>TRAFFIC CONTROL SERVICES</small> <small>5300 Asbury Rd, Farmingdale, NJ 07727</small> <small>TEL: 844.TPLAN.44 FAX: 732.919.0070</small>		SCALE: N.T.S.	DATE: 04-13-17
		DRWN: KO	CHKD: CS
		REV#: 2.0	SHT. NO. 1 OF 1