

Portfolio Analysis Tool (PAT): Quantifying Coastal Flood Risk

More coastal floods. More damage to your bottom line and your community.

Coastal Flood Risk Is Increasing

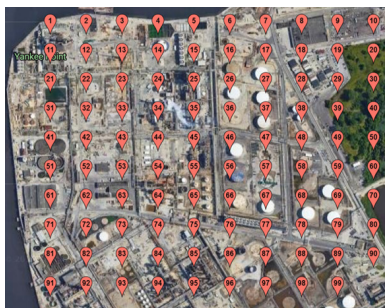
Coastal flooding that occurred rarely in the past is now happening more often. Even minor flooding can lead to serious financial impacts. In the U.S., flood risk information from FEMA does not currently include future expected sea level rise. And while flood maps are helpful, flood risk information for large numbers of locations, like insured properties, is more appropriate to process as a list or portfolio rather than a map.

Climate Central's Portfolio Analysis Tool quantifies coastal flood risk to real estate holdings, insured properties, critical facilities, commercial sites, infrastructure, supply chains and more. Our analyses scale from one location to hundreds of thousands, providing essential data for determining future vulnerability to floods and making informed decisions about resilience planning.

PAT employs localized sea level rise projections, local flood history, and leading elevation data to calculate the expected number of future floods due to rising sea level almost anywhere in the world; and in the U.S., information not currently available from FEMA.

PAT has been applied to industrial facilities, ports, planned water plant locations, electric utility infrastructure, hospitals, schools, development bank project locations, county-level buildings, planned city project sites, and more.

Partnering with Zillow, Climate Central used PAT to analyze the future flood risk to new homes built in coastal U.S. states.



Don't wait until it's too late. Find out how frequently the places you care about could flood. To learn more about or to request a meeting with a member of our team, visit go.climatecentral.org/products or email products@climatecentral.org.



See our report on the coastal flood risks to [Florida's Space Coast](#), as covered in:

- [Florida Today](#): "Could Kennedy Space Center launch pads be at risk as climate changes? Experts say yes"
- [News 13 Orlando / Bay News 9](#): "Cape Canaveral launch sites threatened by rising seas"



Our Report



Florida Today



News 13 Orlando



1 Palmer Square
Princeton, NJ
08542

+1-609-986-1990
products@climatecentral.org
go.climatecentral.org/products