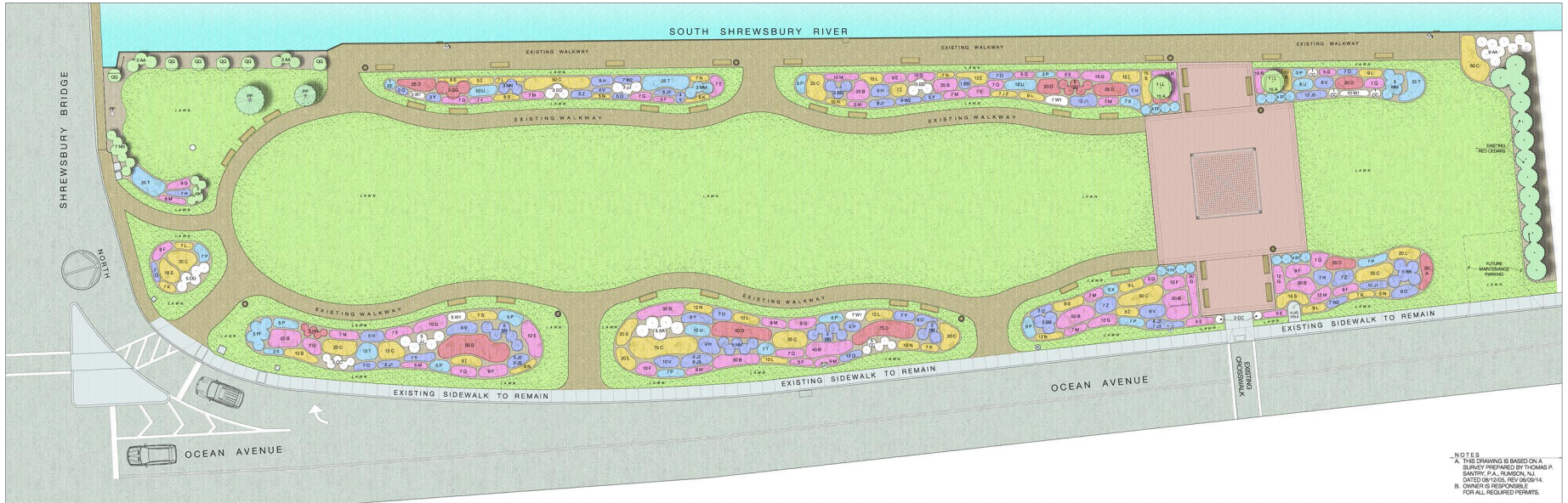


SHREWSBURY RIVERFRONT PARK
OCEAN AVENUE
SEA BRIGHT, NEW JERSEY



NOTES
A. THIS DRAWING IS BASED ON A SURVEY PREPARED BY THOMAS P. BENTLEY, C.E., IN RED BANK, NJ. DATE OF SURVEY: FEBRUARY 14, 2014. OWNER IS RESPONSIBLE FOR ALL REQUIRED PERMITS.

REVISIONS	DATE

PERENNIALS AND SHRUBS

Key	Botanical Name	Common Name	Qty	Size	Key	Botanical Name	Common Name	Qty	Size
A	<i>Rhus aromatica</i> 'Gro-Low	'Gro-Low' Sumac	50	1 gallon	IJ	<i>Panicum 'Heavy Metal'</i>	'Heavy Metal' Switch Grass	42	1 gallon
B	<i>Panicum 'Shenandoah'</i>	'Shenandoah' Switch Grass	310	1 gallon	V	<i>Vernonia noveboracensis</i>	'Ironweed'	40	1 gallon
C	<i>Panicum 'Harse Herms'</i>	'Harse Herms' Switch Grass	410	1 gallon	W1	<i>Salvia 'Snow Hill'</i>	'Snow Hill' Salvia	34	1 gallon
D	<i>Panicum 'Stratum'</i>	'Stratum' Switch Grass	265	1 gallon	W2	<i>Salvia 'May Night'</i>	'May Night' Salvia	23	1 gallon
E	<i>Muhlenbergia capillaris</i>	Muhlb. Grass	50	1 gallon	X	<i>Eryngium 'Big Blue'</i>	'Sea Holly'	15	1 gallon
F	<i>Sedum 'Autumn Joy'</i>	'Autumn Joy' Sedum	80	1 gallon	Y	<i>Echinops nitro</i>	'Small Globe Thistle'	35	1 gallon
G	<i>Echinacea pallida</i>	Pale Purple Coneflower	108	1 gallon	Z	<i>Perovskia atriplicifolia</i>	'Russian Sage'	17	1 gallon
H	<i>Aster novae-angliae</i>	New England Aster	54	1 gallon	AA	<i>Viburnum dentatum</i>	'Arrowwood Viburnum'	20	3 gallon
I	<i>Swicigo rigida</i>	Stiff-leaved Goldenrod	50	1 gallon	BB	<i>Prunus maritima</i>	'Beach Plum'	25	3 gallon
J	<i>Iris germanica</i>	'Bearded Iris'	41	1 gallon	CC	<i>Clethra 'Sixteen Candles'</i>	'Sixteen Candles' Clethra	15	3 gallon
J2	<i>Iris 'Butter & Sugar'</i>	'Butter & Sugar' Siberian Iris	29	1 gallon	DD	<i>Hydrangea 'Sister Theresa'</i>	'Sister Theresa' Hydrangea	11	3 gallon
J3	<i>Iris 'Caesar's Brother'</i>	'Caesar's Brother' Siberian Iris	32	1 gallon	EE	<i>Hydrangea 'Nikko Blue'</i>	'Nikko Blue' Hydrangea	1	3 gallon
K	<i>Santolina chamaecyparissus</i>	'Lavender-cotton'	27	1 gallon	FF	<i>Hydrangea 'Endless Summer'</i>	'Endless Summer' Hydrangea	21	3 gallon
L	<i>Rudbeckia 'Goldsturm'</i>	'Black Eyed Susan'	147	1 gallon	GG	<i>Ilex verticillata 'Winter Red'</i>	'Winter Red' Winterberry Holly	8	3 gallon
M	<i>Achillea 'Appleblossom'</i>	'Appleblossom' Yarrow	107	1 gallon	HH	<i>Ilex verticillata 'Red Sprite'</i>	'Red Sprite' Winterberry Holly	3	3 gallon
N	<i>Hemerocallis 'Happy Returns'</i>	'Happy Returns' Daylily	79	1 gallon	JJ	<i>Ilex verticillata 'Red Sprite'</i>	'Bridalwreath Spraea'	8	3 gallon
O	<i>Veronica spicata</i>	'Spike Speedwell'	80	1 gallon	KK	<i>Spiraea 'Shirobana'</i>	'Shirobana Spiraea'	5	3 gallon
P	<i>Amsonia hubertii</i>	'Hubert's Amsonia'	73	1 gallon	LL	<i>Vibex agrus-castus</i>	'Chastetree'	2	5 gallon
Q	<i>Eupatorium 'Little Joe'</i>	'Little Joe' Joe Pye Weed	38	1 gallon	MM	<i>Vaccinium corymbosum</i>	'Highbush Blueberry'	8	3 gallon
R	<i>Ameria maritima splendens</i>	'Sea Thrift'	30	1 gallon	NN	<i>Myrica pensylvanica</i>	'Northern Bayberry'	15	3 gallon
S	<i>Leucanthemum 'Becky'</i>	'Becky' Shasta Daisy	120	1 gallon	PP	Existing tree to remain	-	-	as is
T	<i>Schizachyrium 'The Blues'</i>	'Little Blue Stem'	92	1 gallon	QQ	Existing grass to remain	-	-	as is

JUNE 2020

RENDERED PLAN

SCALE: 1/16" = 1'-0"

DRAWN BY: PROJECT SHEET:
J.H./M.E. 2014-13 1 OF 1

R-1