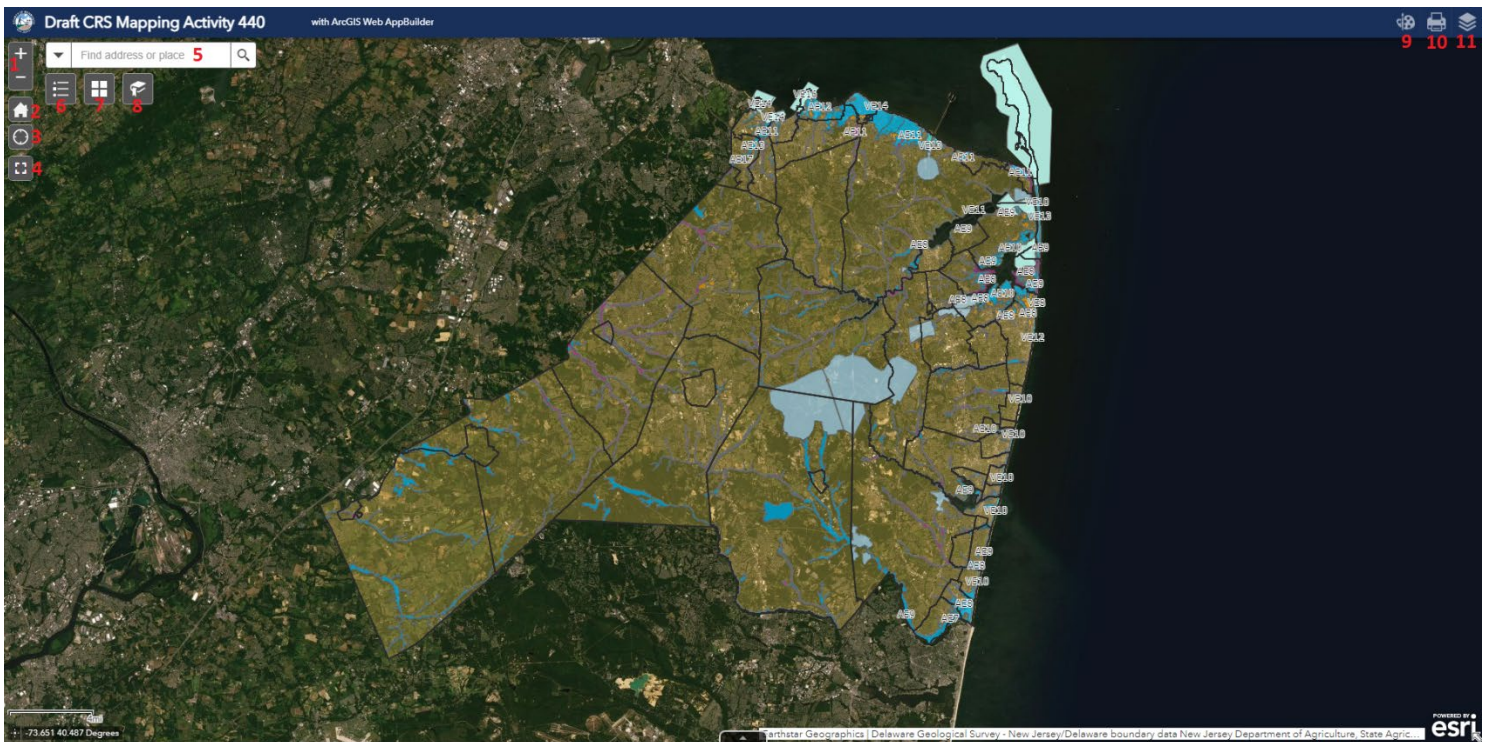




## User's Guide to Monmouth County's CRS Activity 440 Self Service Web Application

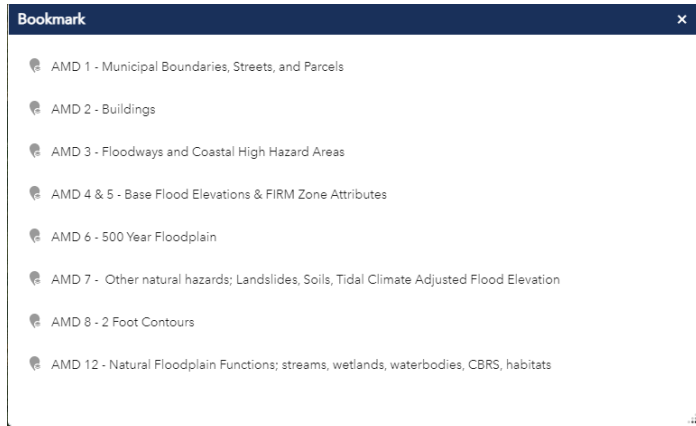
This web-mapping application is intended to host and provide data to CRS communities in an accessible self-serve format, specifically addressing **CRS Activity 440 Flood Data Maintenance - Element 442.a Additional Map Data (AMD)**. The maximum credit awarded for this element is *up to 160 points for implementing digital or paper systems that improve access, quality, and/or ease of updating flood data within the community.*

### New to ArcGIS applications? Here is a quick tour of the featured tools:



1. **Zoom In and Out** – you can use these buttons or scroll with your mouse.
2. **Default Extent** – brings the view of the map back to the full county as you see above.
3. **My Location** – an easy way to zoom to your municipality on the map. Requires permission to access your location.
4. **Full Screen**
5. **Find Address or Place** – allows you to enter a street address or municipality and will zoom to that location on the map. You may need to enter the state and zip code for accuracy.
6. **Legend** – will display the layers that are active on the map and their symbols.
7. **Basemap Gallery** – provides options for what map you want your data to be displayed over, e.g. topographic maps, imagery with labels, or streets. Choosing a lighter basemap can make printing easier.
8. **Bookmarks** – there are built in bookmarks that allow you to select which AMD you want to view that will automatically select the layers for that AMD. *More info about this tool below.*
9. **Draw** – allows you to markup the map with points, lines, shapes, and text. These will only be on your browser and not viewable to any other users of the application. *More info about this tool below.*
10. **Print** – allows you to print in multiple formats including PDF, JPEG, PNG, and others.
11. **Layer List** – includes every layer of data that is built into the map, allowing you to select or unselect the data you want to view. *More info about this tool below.*

## About Bookmarks:

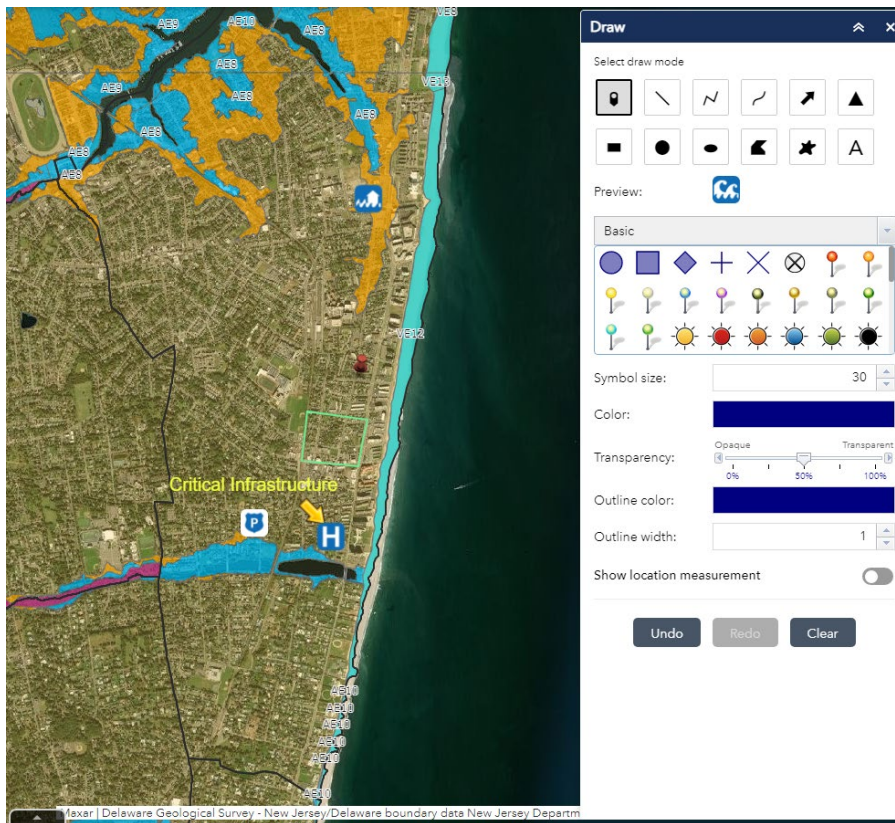


Each AMD creditable with this application is bookmarked to automatically select which layers belong to that AMD.

For readability, you may want to turn layers on and off to view them individually, but the bookmark will help identify the layers you need.

Select a bookmark *before* zooming in to your community. The bookmarks are set to the Default Extent of the map.

## About the Draw tool:



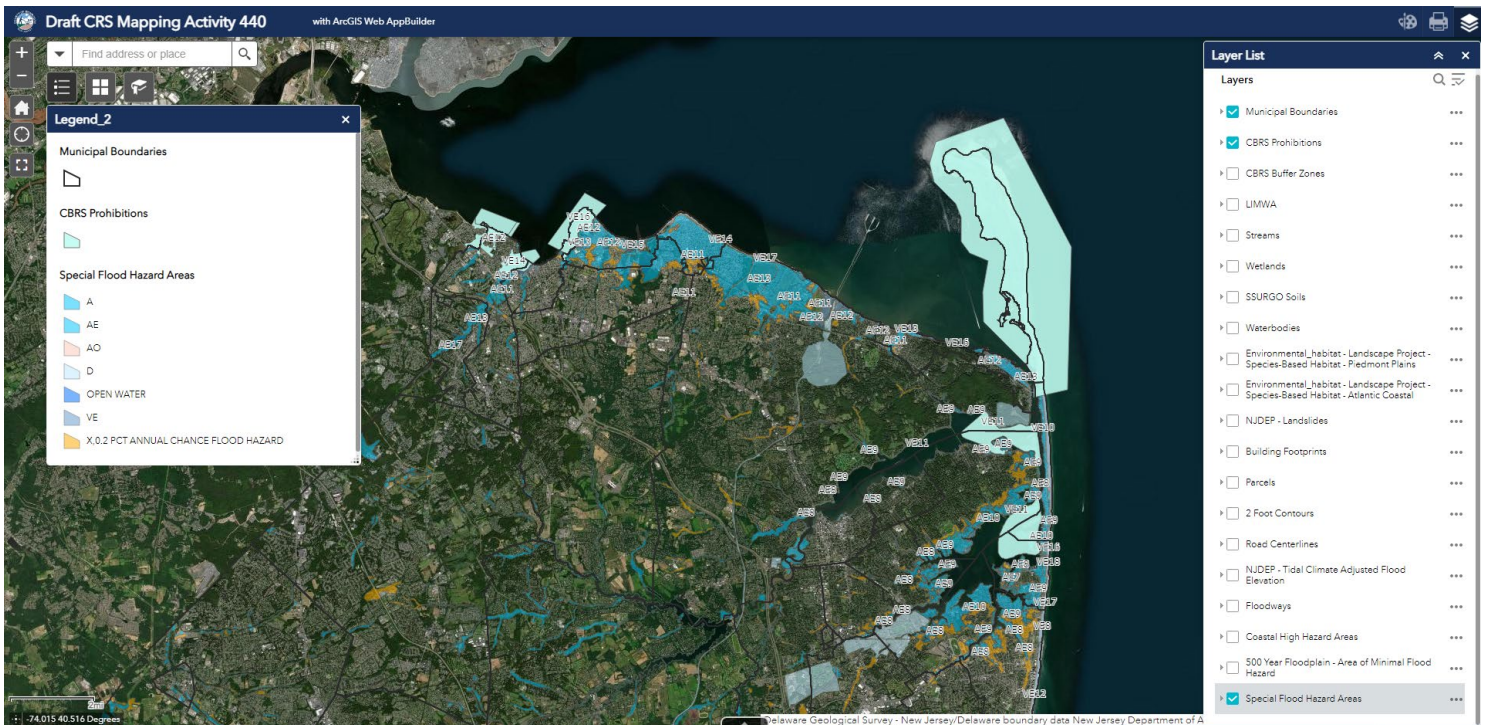
With the draw tool, you can markup the map with symbols, lines, shapes, and text.

The “point” draw mode pictured to the left has a drop-down menu featuring countless symbols you can add to your map. These can be simple pins and flags or symbols relating to infrastructure, disasters, points of interest, and many more.

**It is important to take a screenshot or print to paper or pdf after you have added drawings to the map. They will not be saved when you close the browser.**

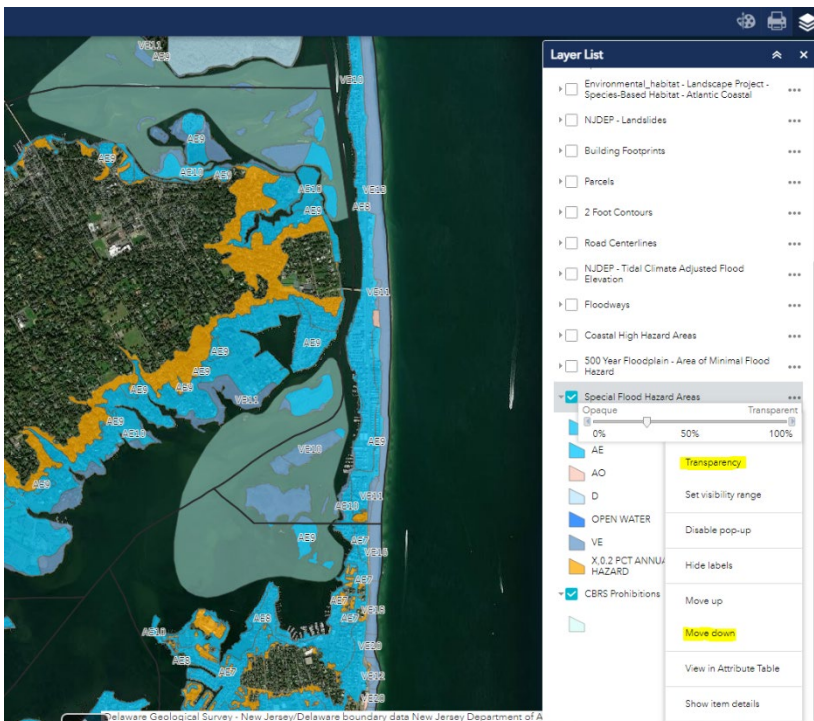
***NOTE: Example drawings are made up to show possibilities with the tool and do not indicate actual infrastructure or facilities.***

## About the Layer List:



The layers selected with the checkbox will automatically be shown on the legend.

The order of the layers on the list dictates the order they will appear on the map.



The dots to the right of each layer open options you can adjust the layers with, in this screenshot “Move Down” was used to put CBRS Prohibitions below the Special Flood Hazard Areas.

The transparency of CBRS Prohibitions and the Special Flood Hazard Areas was also changed to make the SFHA opaquer and CBRS more transparent. This helps us see what flood zones fall within CBRS Prohibition Areas.

To be credited for Activity 440, CRS communities should provide a link to this tool on their website and ensure that the CRS Coordinator, Floodplain Administrator, and/or Construction officials are aware of the application.

**If you have any questions or need assistance with the application, do not hesitate to contact Ashlynn Shanahan.**

(e) [Ashlynn.Shanahan@co.monmouth.nj.us](mailto:Ashlynn.Shanahan@co.monmouth.nj.us)

(t) 732-431-7460 (ext.3640)