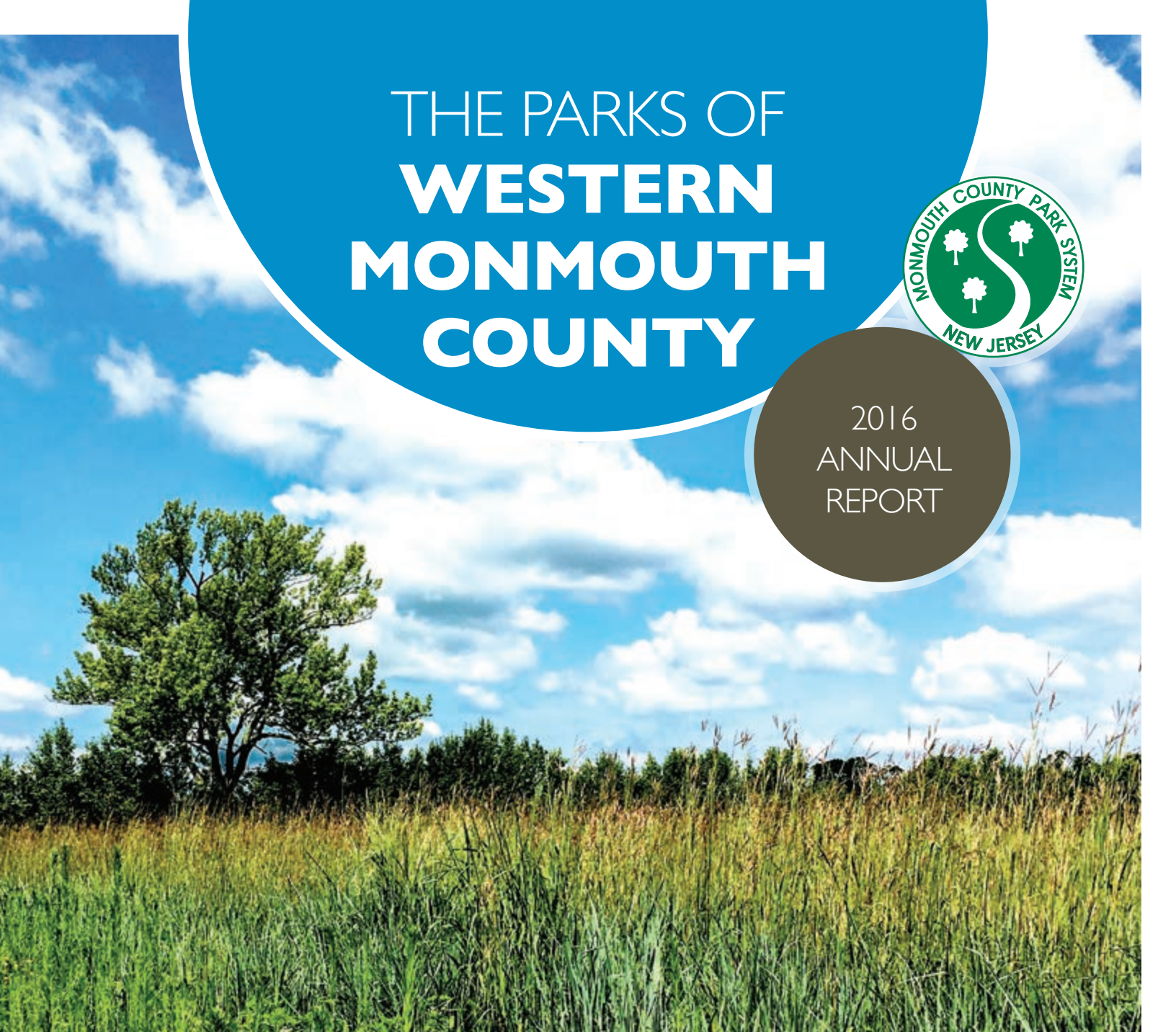


# THE PARKS OF **WESTERN MONMOUTH COUNTY**



2016  
ANNUAL  
REPORT



# QUICK FACTS

2016

# GETTING TO KNOW THE OPEN SPACES

OF WESTERN MONMOUTH COUNTY

## LAND & TRAILS

NUMBER OF COUNTY PARKS	43
TOTAL ACRES OF COUNTY PARKLAND <sup>(a)</sup> (EXCL. EASEMENTS)	16,788
LAND ACRES	15,974
WATER ACRES	814
NEW ACRES ACQUIRED IN 2016	231
MILES OF TRAILS	138
PAVED	31
EASY	25
MODERATE	74
CHALLENGING	8

## RECREATION PROGRAMS

NUMBER OF PROGRAMS OFFERED	6,027
PROGRAM ATTENDANCE	91,592

## PERSONNEL

FULL-TIME STAFF	329
HOURLY/PART-TIME STAFF (SEASONAL)	321
PROGRAM STAFF/INSTRUCTORS	342
VOLUNTEERS	997
TOTAL VOLUNTEER HOURS	23,294

## GOLF

TOTAL NUMBER OF GOLF COURSES	8
TOTAL NUMBER OF FOOTGOLF COURSES	2
TOTAL ROUNDS PLAYED	208,340

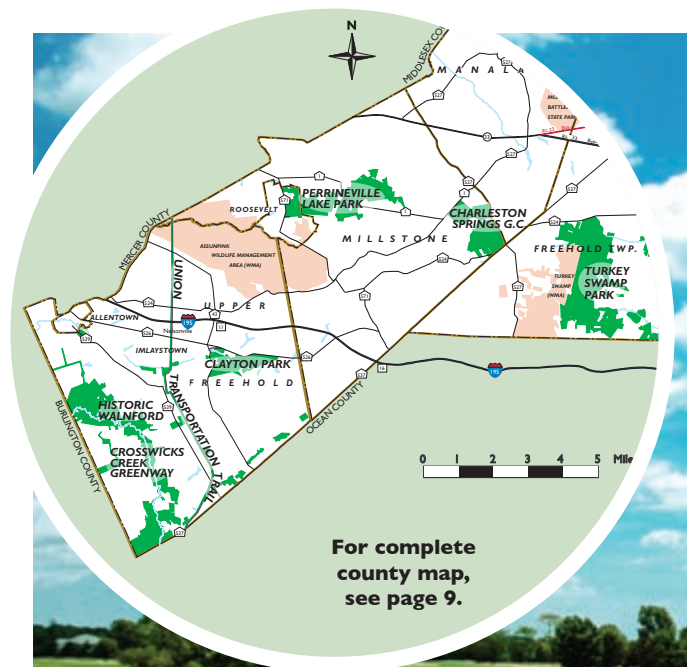
## FACILITY RENTALS

PICNIC SHELTERS, PAVILION & TENT RENTALS	308
CAMPSITE RENTALS (NIGHTS)	4,094
CABIN RENTALS (PERMITS)	289
SPECIAL EVENTS, RACES & OTHER PARK USES <sup>(b)</sup>	84
HORSE AND DOG SHOWS	35
WEDDINGS	29

## VISITS TO INDIVIDUAL PARKS<sup>(c)</sup>

BAYSHORE WATERFRONT PARK	212,596
BEL-AIRE, 18-HOLE COURSE	22,464
BEL-AIRE, 9-HOLE COURSE	10,373
CLAYTON PARK	29,321
CHARLESTON SPRINGS GOLF COURSE	51,651
DEEP CUT GARDENS	107,181
DORBROOK RECREATION AREA	577,276
EAST FREEHOLD SHOWGROUNDS	82,345
FISHERMAN'S COVE	55,771
HARTSHORNE WOODS PARK	261,307
HENRY HUDSON TRAIL	202,225
HISTORIC LONGSTREET FARM	108,039
HISTORIC WALNFORD	13,426
HOLMDEL PARK	974,546
HOMINY HILL GOLF COURSE	36,664
HOWELL PARK GOLF COURSE	32,458
HUBER WOODS PARK	103,150
MANASQUAN RESERVOIR	1,147,445
MONMOUTH COVE MARINA	36,799
MOUNT MITCHILL SCENIC OVERLOOK	185,282
PERRINEVILLE LAKE PARK	15,143
PINE BROOK GOLF COURSE	19,885
SEVEN PRESIDENTS OCEANFRONT PARK	715,993
SHARK RIVER GOLF COURSE	34,845
SHARK RIVER PARK	110,130
TATUM PARK	134,268
THOMPSON PARK	774,289
TURKEY SWAMP PARK	257,333
UNION TRANSPORTATION TRAIL	21,594
WOLF HILL RECREATION AREA	252,759
<b>TOTAL</b>	<b>6,586,558<sup>(c)</sup></b>

<sup>(a)</sup>This represents about 6% of Monmouth County's total acreage 301,804  
<sup>(b)</sup>Includes temporary use occupancy, cross-country races and fishing tournaments  
<sup>(c)</sup>County Population is 628,715 (Monmouth County Planning Board estimate)



Charleston Springs, the county's largest golf course

The Monmouth County map has a unique shape with the westernmost section forming a distinct 'panhandle' comprised of Allentown, Upper Freehold, Roosevelt and Millstone townships. This area is different than other parts of the county owing to its farming history, rural character and noticeably sparser population (the 'panhandle' makes up 20% of the county's land area, and contains 3% of the population).

When people from other parts of the county visit for the first time, they say things like "It's so peaceful here" and "This doesn't look anything like the rest of the county." The absence of traffic and commercial buildings as you drive alongside miles of wide open fields offers a quiet counter-point to the more developed parts of the county.

The unique scenic landscape of western Monmouth is now well-reflected in the county's open space inventory. The Park System's largest golf course at **Charleston Springs** and the preserved mill village at **Historic Walnford** are both located in this region, and more than half of parkland preserved in the last decade has been in the county's western-most parks at **Crosswicks Creek**, **Clayton**, **Perrineville Lake** and the **Union Transportation Trail**. As a result, western Monmouth County's recreational opportunities are growing while the area's most important natural and historic resources are protected.

This year's Annual Report opens with a review of the county parks located in western Monmouth County, followed by a summary of park accomplishments, visitation, and land acquisitions. The report closes with highlights from our park partners, and the financial report for 2016.



Crosswicks Creek Park



Perrineville Lake Park

# RECREATION AND RESOURCES

## OF MONMOUTH COUNTY'S WESTERN PARKS

Located in an area still heavily populated by horse farms, the agricultural and equestrian “roots” of **Perrineville Lake Park** are evident. The first parcel was acquired in 1999, and during the next 15+ years, the park grew as large tracts of former farmland were added. At 1,237 acres, it is now among the largest open spaces in Monmouth County and is our 3rd largest park. Characterized by younger forests, just decades old having grown in on former farmland, the park contains 5 miles of multi-use trails (established with support from the Millstone Trailblazers) and a manmade, 16-acre lake at the center provides a quiet site for fishing and boating.



Land acquisition began along Crosswicks Creek in 1985 with the 36-acre donation of the beautiful property and buildings at **Historic Wainford**, and continued with efforts by the county’s farmland preservation program using agricultural and scenic easements, fee simple purchases and land exchanges with assistance from the Monmouth Conservation Foundation and state Green Acres Funds. At 2,277 acres, **Crosswicks Creek Park** protects a major county waterway and adjacent fields, stream valleys and forests, while also linking to and protecting nearby parkland and sites of historic and archaeological value.



Founded in 1979, the 450-acre **Clayton Park** is one of the region’s older parks, featuring a core of original old-growth or “century” forest (preserved by farmers for firewood). The park has eight miles of deeply wooded trails with gorgeous stands of mature ash, beech, oak and poplar and an abundance of wildflowers early each spring. Positioned alongside Doctors Creek, there are trailside waterways and a scenic fishing pond. Clayton Park also contains some relatively hilly terrain for this area, which makes it a favorite destination for hikers and mountain bikers.



Built along a former rail line, the natural surface **Union Transportation Trail (UTT)** is the result of a long-term lease between the Park System and JCP&L, allowing the land to be developed for recreational use. With its final section opening in 2016, the UTT now stretches uninterrupted across the western corner of the county. The trail starts at Monmouth County’s northern border with Mercer County at Assunpink Wildlife Management Area and travels south through farmland and rural countryside, ending at the border with Ocean County. Notably, the UTT features 11 bridges over the region’s many streams and creeks including two classic railroad trestles over Lahaway Creek and Doctors Creek.



# PARKS ACCOMPLISHMENTS

2016

## PARK IMPROVEMENTS & NEW FACILITIES



### Hartshorne Woods Park

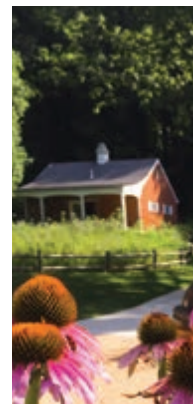
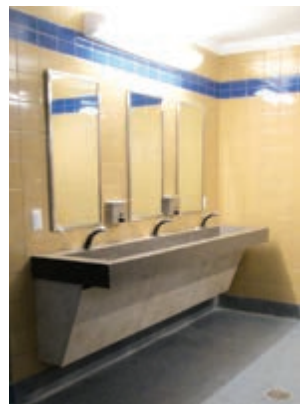
This large park has new facilities underway at:

- **Claypit Creek Trail and Road Crossing:** A new 0.6-mile trail and boardwalk at this picturesque outpost now leads to a crossing at Hartshorne Road into the main trail system of the park.
- **Battery Lewis Exhibits at Rocky Point:** Recent renovations to the battery interior and gun emplacement bring this site's military exhibits one step closer to completion.
- **Portland Place Renovations:** This former waterfront estate has been converted into a museum and will soon join our growing inventory of waterfront park sites, this one with spectacular views.



### Dorbrook Recreation Area Pool Building & Sprayground

Renovations to the pool building (swim lessons) and Sprayground completed last year will each benefit thousands of participants each summer.



### Big Brook Camp Facility

Improvements to the Neuberger Lodge (staff offices and storage), pavilions, playground and pond in the camp area at Big Brook Park were completed this year.

**Holmdel Park Forest Edge Restrooms**  
Renovations to the building and bathrooms were completed in 2016.



### Thompson Park Estate Grounds

A series of beautiful brick walkways were installed around the Visitor Center, the paved trail was re-routed away from the highway, and the nearby Old Orchard Parking Lot was renovated.



### Deep Cut Gardens Picnic Grove and Viewshed

Picnic tables were installed in the quiet, wooded eastern edge of the park and clearing invasive trees nearby opened the view to the rose parterre.



### Shark River Park Bridge/Embankment Repair

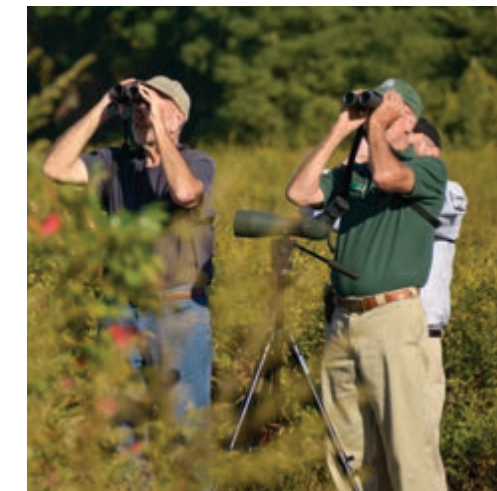
Improving this water crossing helped stabilize an ongoing erosion problem. Plus, a new storage shed at the Shelter Building offers greater flexibility for this site's popular archaeology programs.

## PROGRAMS, EVENTS & ACTIVITIES



### Our Therapeutic Recreation Programs

continue expanding to accommodate changing needs of our county residents with disabilities. This includes expanding our popular evening/weekend outings for teens, providing inclusion coaches so all children and adults can attend park programs, and modifying adult day care services this year to meet new state funding requirements for individuals with special needs.



### Free, nature "Drop In" programs

are growing in popularity; there are now 10 options for park visitors to enjoy: Roving Naturalist, Casual Birder, Butterfly Walks, EnviroQuest and Earth Day (parkwide), Nature Lectures and Seining (Bayshore Waterfront Park), Story Hours (Deep Cut), Seashore Scientists (Seven Presidents), and Tidal Tuesdays (Fisherman's Cove).



Record-breaking attendance was seen at Dorbrook Recreation Area's **Eco-Elephant Flea Market** when more than 100 vendors showed up to sell their items in a beautiful, park setting. Owing to good weather and a superb line-up of activities for the whole family (including the new Golf-rilla activity), Thompson Park Day topped 14,000 visitors for the first time last fall.



Fort Monmouth Recreation Area is fast becoming a year-round hub for local activities offering pool passes during summer and pickleball and **volleyball leagues** in the gym during winter.

Several new general programs were added to the Outdoor Adventures line-up in 2016 including scuba, Twilight Biking, and Paws on the Trail hikes for pet-owners.



As a coastal county, it's no surprise that water-based activities such as kayaking and **paddleboarding** are popular. Classes are now offered at multiple park sites with water access, including the recently acquired Swimming River Park.



Water-themed programs are also popular, especially when they tie into local folklore or a TV event, like the **Shark Week for Young Artists** camp, featuring shark-related activities such as paintings, sculptures and attire.

# LAND ACQUISITION

2016

The Park System added 231 acres to seven park properties in 2016. Highlights include seven historic acres at Clayton Park in Upper Freehold containing the former Imlaystown Elementary School (now a new Activity Center, pictured right); 119 acres at the southernmost section of Crosswicks Creek Park near the Monmouth-Ocean County border; and 69 acres in the heart of Perrineville Lake Park. The Park System now owns/manages 16,788 acres at 43 park sites and golf courses across Monmouth County.

Another nine acres of open space were protected as easements, which have reached a total of 2,771 acres (NOT shown on map). Combined, Monmouth County's open space inventory now contains 19,559 acres.



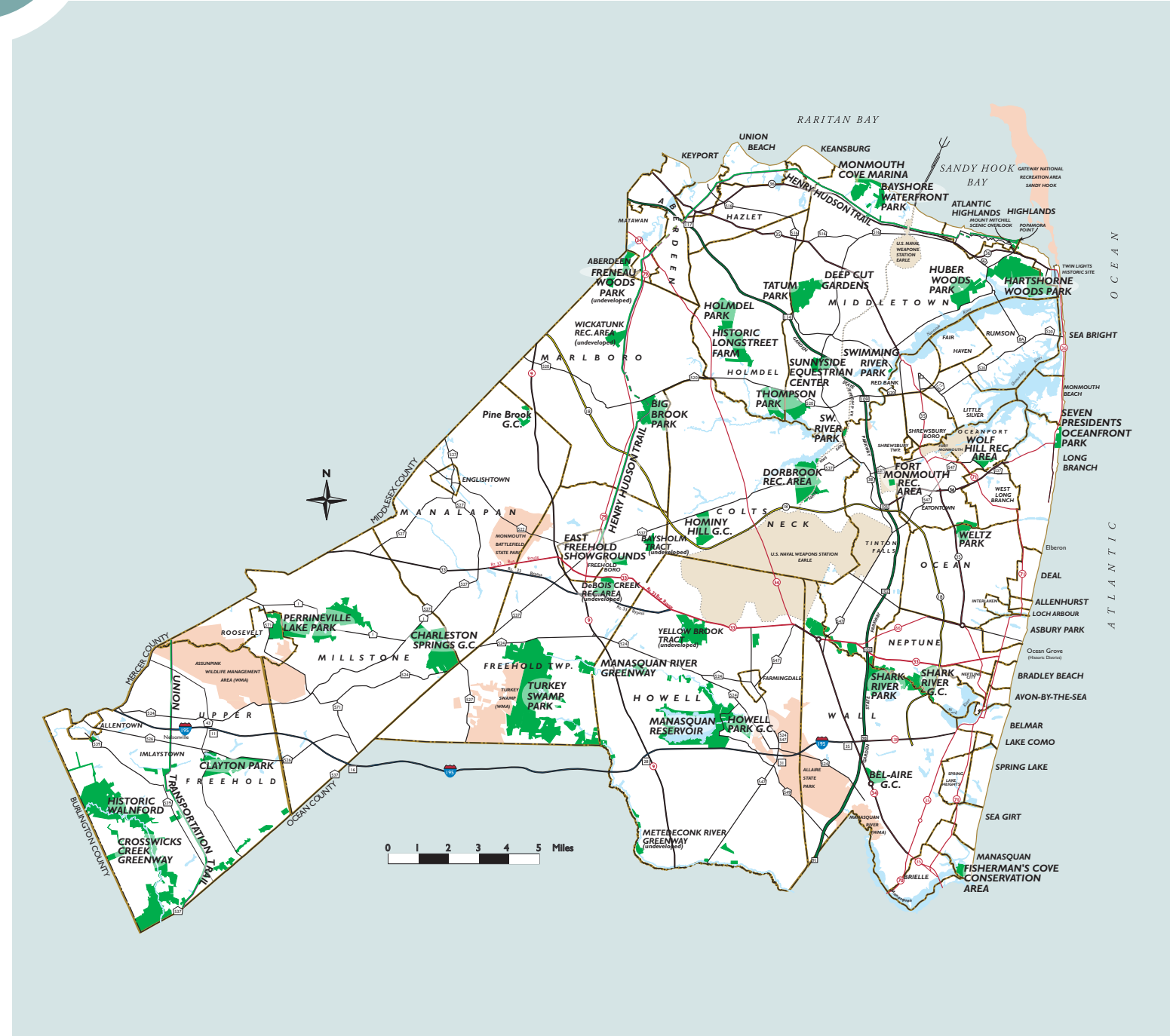
Clayton Park Activity Center

## NEW PARK ACRES

Clayton Park	7	Metedeconk River Greenway	21
Crosswicks Creek Park	119	Perrineville Lake Park	69
Freneau Woods Park	3	Turkey Swamp Park	3
Manasquan River Greenway	9		
		Land Additions	231
		Easements	9
		<b>TOTAL</b>	<b>240</b>

## PARK PROPERTIES & ACREAGE

Bayshore Waterfront Park	228	Manasquan River Greenway	453
Bel-Aire Golf Course	114	Monmouth Cove Marina	11
Big Brook Park	432	Mount Mitchell Scenic Overlook	12
Charleston Springs Golf Course	781	Perrineville Lake Park	1,237
Clayton Park	450	Pine Brook Golf Course	61
Crosswicks Creek Park	2,277	Seven Presidents Oceanfront Park	38
Deep Cut Gardens	54	Shark River Golf Course	176
Dorbrook Recreation Area	535	Shark River Park	988
Durand Tract (leased to Freehold Twp.)	94	Sunnyside Equestrian Center	136
East Freehold Showgrounds	81	Swimming River Park & Greenway	16
Fisherman's Cove Conservation Area	55	Tatum Park	366
Fort Monmouth Recreation Area	6	Thompson Park	667
Freneau Woods Park	158	Turkey Swamp Park	2,266
Hartshorne Woods Park	794	Union Transportation Trail (UTT)	44
Henry Hudson Trail (HHT)	111	Weltz Park	169
Historic Longstreet Farm	9	Wickatunk Recreation Area	71
Historic Walnford	36	Wolf Hill Recreation Area	92
Holmdel Park	566	<b>Undeveloped Sites</b>	
Hominy Hill Golf Course	262	Bayholm Tract	71
Howell Park Golf Course	311	DeBois Creek Recreation Area	165
Huber Woods Park	375	Metedeconk River Greenway	444
Manasquan Reservoir	1,208	Yellow Brook Tract	369
		Total Acres Owned and/or Managed by the Park System	16,788 <sup>(a)</sup>
		Easements	2,771 <sup>(b)</sup>
		<b>TOTAL ACRES</b>	<b>19,559</b>



<sup>(a)</sup>This number includes 1,052 acres at the Manasquan Reservoir owned by the NJ Water Supply Authority and leased to the Park System for perpetual use, 83 acres of the HHT owned by the county and leased to the Park System, and 6 acres at Fort Monmouth leased to the Park System from the US Army through the Fort Monmouth Economic Revitalization Authority (FMERA).

<sup>(b)</sup>This number includes 103 acres of HHT under 20 year lease from NJ Transit as an easement, and 64 acres of UTT under permanent easement from JCP&L as a right of way. These are currently managed as park property.

# PARK PARTNERS

2016



This year, 997 volunteers contributed 23,294 hours of service in 1,461 different roles across the parks. The therapeutic riding program at Sunnyside Equestrian Center remains the largest volunteer area, followed by assisting our staff at programs and camps. The talented garden/pruning team logs many hours keeping our manicured park areas looking beautiful, and volunteers also work hard to maintain the trails, clean the beaches, staff our special events, provide administrative support, interpret our sites, greet park visitors, and protect endangered birds. Here are the special individuals and groups who gave 40+ hours of time to these efforts in 2016.

## 100+ HOURS

## 40-99 HOURS

Werner Aehlich  
Andrew Antonioli  
Alyssa Austin  
Joan Berg  
Paige Biebel  
Janice Blake  
Christine Bremseth  
Janet Breslin  
Mary Byrne  
Anne Caruso  
Hanna Ceppaluni  
Shayna Cohen  
Louise DelCollo  
Harvey Evans  
Barbara Finazzo  
Carol Fornwald  
Harden Fowler  
Kathleen Freeman  
James Gault  
James Henry  
Amanda Hintelmann  
Nadi Karacay  
Linda Lawton  
Gerry Lingner  
Ulrike Liroso  
Lois Lyons  
Ralph Maratea  
Kelly Meade  
Richard Merker  
Catherine Merker  
Bonnie Muir  
Eileen Murphy  
Les Neiman  
Frank Nofi  
Alex Osnato  
Linda Rovder  
Walter Salzmann  
Brea Saunders  
Eleanor Swanson  
Barbara Venanzini  
Elaine Weigl

Jodee Anderson  
Jane Banahan  
Catherine Bannon  
Paula Belem  
Denise Bixby  
Pamela Bluish  
Sara Bonardi  
Amanda Bossert  
Mitchell Bundschuh  
Sandy Burn  
Stephanie Camp  
Monica Cantor  
Barbara Carroll  
Elizabeth Clarke  
Helen Cole  
Kathleen Culver  
Judy Curry-Phipps  
Cody Dalton  
Bethany Darby  
Denise Day  
Radhamani Dayanidhi  
Darlene Debarba  
Emma DeSantis  
Barbara Duggan  
Debbie Elsingher  
Kathleen Evans  
Cheryl Fulmer  
Ruth Garipey  
Loma Gault  
Trevor Golusinski  
Cheryl Greenfield  
Angelo Grimaldi  
Dolores Grimaldi  
Erin Gross  
Judy Hands  
Donna Hansen  
Kathleen Harbort  
Susan Henschel  
Hope Hershman  
Liz Hesper  
Catherine Holler  
Lucy Hopkinson  
Karen Kacani  
Katie Kalfayan  
Mary Kardauskas  
Laura Kavanagh  
Robert Kilduff  
Kristen Kircher  
Maya Konefal  
Sherry Kosberg  
Michael Kranis  
Arthur Lackner  
Belen Lacosta  
Katie Lasko  
Brooke Lichter  
Elizabeth Lilleston

Jeanette Lingelbach  
Daniel Lingelbach  
Joy Malysko  
Gayle Mancari  
Nicholas Marrero  
Danielle Martinez  
Susan Mazur  
Alice McCaddin  
Elaine McColgan  
Emily McNeill  
Nancy Meagher  
Amy Meechan  
Anna Meechan  
Catherine Meechan  
Riana Melillo  
Robert Moe  
Benedict Montalbano  
Bill Murphy  
David Nass  
Madelyn Oliveira  
Deborah Palumbo  
Stewart Prince  
Thomas Puskar  
April Qin  
Martha Rajaei  
Eileen Reed  
Anna Maria Riccio-Mandala  
Patricia Richter  
Joseph Rossi  
Diana-Lee Salerno  
Ben Sammarco  
Kara Sayre  
Elizabeth Scharmann  
Patricia Shoenfelder  
Alexa Setteducati  
Mary Jeanne Shaughnessy  
Regina Sieben  
Elyse Spinelli  
Noel Stoll  
Christina Sundt  
Margaret Swan  
Dianne Swenson  
Ellen Terry  
Shayla Thompson  
Nora Thomson  
Margo Thornton  
Patricia Thul  
Michaela Tovar  
Daniel Tutler  
Ann Tvaroha  
Anna-Marie Van Brunt  
Gerald Vernon  
Nicholas West  
Lewis Whitaker  
Christine Yovnello



(l to r) Coordinator of Volunteers Tracy Shiffman; Volunteers Alex Osnato (3,000 lifetime hours) and Gerry Lingner (3,000 lifetime hours); Public Information Officer Karen Livingstone, and Volunteer Jim Henry (9,000 lifetime hours) at the 2016 Annual Luncheon.



## School & Community Groups

Allenwood Elementary School  
Allied Health  
Barkalow Middle School  
Biotechnology High School  
Brick Township High School  
Brookdale Community College  
BSA Troop 926  
Catena Elementary  
Cedar Drive Middle School  
Christian Brothers Academy  
Colts Neck High School  
Community Service Club  
Colts Neck NJROTC  
Communications High School  
Cub Scout Pack 141  
Deep Cut Bonsai Society  
Eagle Scout Troup 333  
Forrestdale Middle School  
Frank Antonides School  
Freehold Boro High School  
Freehold Township High School

High Technology High School  
Holmdel High School  
Holmdel High School Honor Society  
Howell High School  
Howell Middle School North  
iCIMS  
Long Branch High School  
L'Oreal USA  
Maple Place Middle School  
Marine Academy of Science & Techology  
Marlboro High School  
Marlboro High School, LEO Club  
Marlboro Middle School  
Master Gardener of Middlesex County  
Master Gardeners of Monmouth County  
Matawan Aberdeen Regional High School  
Mater Dei Prep High School

Middlesex County Academy  
Middletown HS North Key Club  
Middletown High School North  
Middletown High School South  
Monmouth Cares  
Monmouth Reform Temple  
Monmouth University  
Morgan Stanley  
Mother of Divine Grace School  
Mount Saint Mary Academy  
New Egypt Cub Scouts Den 1  
New Egypt Cub Scouts Den 2  
Nielsen Group  
NJ Institute of Technology  
Ocean Township High School  
Ranney School  
Raritan High School  
Raritan HS Interact Club  
Red Bank Catholic High School  
Red Bank Regional High School  
Richard Stockton College of NJ

Rumson Fair Haven Regional High School  
Rutgers Master Gardeners  
Rutgers University  
Saint John Vianney High School  
Seton Hall Prep  
Shore Regional High School  
St. John Vianney High School  
St. Leo the Great  
Stony Brook University  
Thompson Middle School  
Thorne Middle School  
Vonage  
Wall High School  
Water Watch  
William R. Satz School  
Woodbridge High School  
Woodbridge Middle School

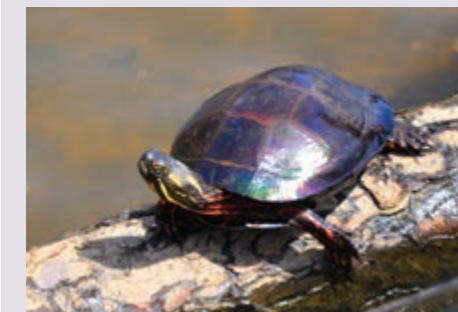
## FRIENDS of the Monmouth County Park System, Inc.



This non-profit, founded in 1991, provides funding for special projects and programs in the parks. Highlights for 2016 include: military history exhibits at Battery Lewis in Hartshorne Woods Park (National Register of Historic Places), a large replacement oak tree at Mount Mitchell, historic attire and artifacts at Walnford and Longstreet Farm, additional equipment for the disc golf course at Wolf Hill, continuing education for Park System staff, and special activities and outings for volunteers, urban youth and young adults with disabilities.

[www.friendsofmonmouthcountyparks.com](http://www.friendsofmonmouthcountyparks.com)

## MCF MONMOUTH CONSERVATION FOUNDATION



Painted turtle photo by Teja Anderson

Monmouth Conservation Foundation (MCF), celebrating its 40th year, was founded in 1977 by Michael Huber and Judith Stanley-Coleman. MCF has directly preserved more than 6,500 acres of open space and farmland in Monmouth County. MCF is dedicated to saving open space, creating parks, preserving farmland, protecting wildlife and safeguarding waterways. As a partner in the NJ Keep It Green campaign, MCF continues to advocate for state funding for open space. The Foundation is one of 357 accredited land trusts out of 1,700 nationwide.

[www.monmouthconservation.org](http://www.monmouthconservation.org)

## SPUR



Special People United to Ride (SPUR) is a non-profit organization that supports therapeutic horseback riding and equestrian programs at Sunnyside Equestrian Center in Lincroft. In 2016, participation increased by 11% in the SPUR ridership program and 56% in the Equine Environment for Learning program for school groups, due to ongoing community outreach with education professionals, veterans groups, and disability advocates and plenty of positive media coverage. This year also brought many accolades, including winning the Isaac's Perpetual Trophy for 2016 Therapy Horse of the Year (Steady) and a nomination for the 2017 Spinnaker Award for Nonprofit of the Year.

[www.spuronline.org](http://www.spuronline.org)

# FINANCIAL STATEMENT

(unaudited)

2016

Combined Statement of Revenue, Expenses and Fund Balances  
For Year Ending December 31, 2016

	TOTALS	GENERAL	TRUST	CASH DONATIONS
<b>BEGINNING FUND BALANCE</b>	<b>\$10,572,033</b>	<b>\$0</b>	<b>\$10,436,897</b>	<b>\$135,135</b>
<b>INCOME</b>				
<b>County Appropriation</b>				
Salaries/Wages	16,695,380	16,695,380		
Other Expense Approp.	1,852,486	1,852,486		
<b>Revenue</b>				
Donations	12,792			12,792
Golf Courses	9,764,297	5,979,784	3,784,512	
Parks	2,919,924	1,454,516	1,465,408	
Monmouth Cove Marina	1,076,082		1,076,082	
Visitor Services	2,902,126		2,902,126	
<b>Open Space Tax</b>	<b>4,159,335</b>			
<b>TOTAL INCOME</b>	<b>\$39,382,422</b>	<b>\$25,982,166</b>	<b>\$9,228,128</b>	<b>\$12,792</b>
<b>EXPENDITURES</b>				
<b>Personnel</b>	<b>19,989,728</b>	<b>17,973,220</b>	<b>2,016,508</b>	
<b>Operations</b>	<b>7,168,355</b>	<b>1,353,197</b>	<b>5,804,635</b>	<b>10,524</b>
<b>General Revenue Returned to Treasurer</b>				
Golf Courses	5,978,791	5,978,791		
Parks	1,455,510	1,455,510		
<b>Open Space Tax <sup>(a)</sup></b>	<b>4,159,335</b>			
<b>TOTAL EXPENDITURES</b>	<b>\$38,751,718</b>	<b>\$26,760,717</b>	<b>\$7,821,143</b>	<b>\$10,524</b>
Excess (Deficit) in Revenues	630,703	-778,551	1,406,986	2,269
<b>ENDING FUND BALANCE</b>	<b>\$11,202,736</b>	<b>-\$778,551</b>	<b>\$11,843,883</b>	<b>\$137,404</b>

**Capital Cash & Open Space Expenditures: <sup>(b)</sup>**

Site Improvements	4,514,593
Land Acquisition	8,186,218
Line Item Capital - Equipment (additional & replacement)	1,528,175
<b>Total</b>	<b>\$14,228,986</b>

**Note:**

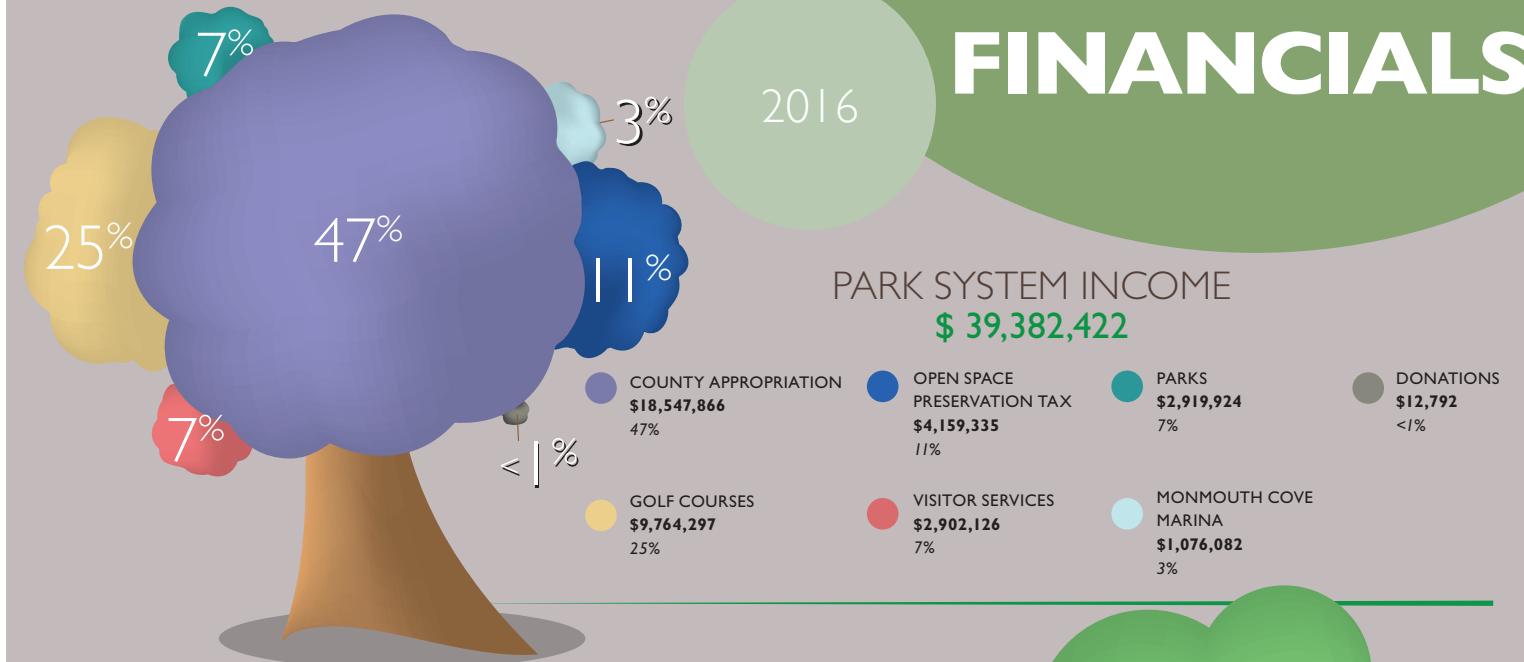
<sup>(a)</sup>Open Space Preservation Tax Offsets maintenance, personnel and other expense appropriation

<sup>(b)</sup>Not included in above statement of expenditures

Capital items listed are not amortized.  
Appropriation does not include salary adjustments, fringe benefits, insurance, and legal services.

# FINANCIALS

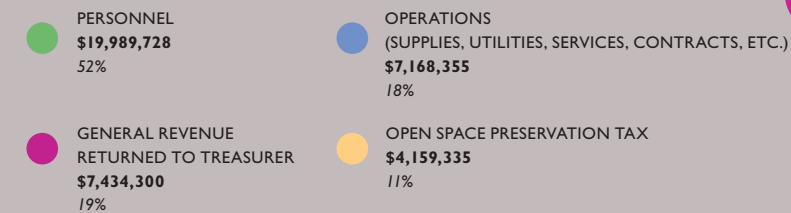
2016



**PARK SYSTEM EXPENDITURES**

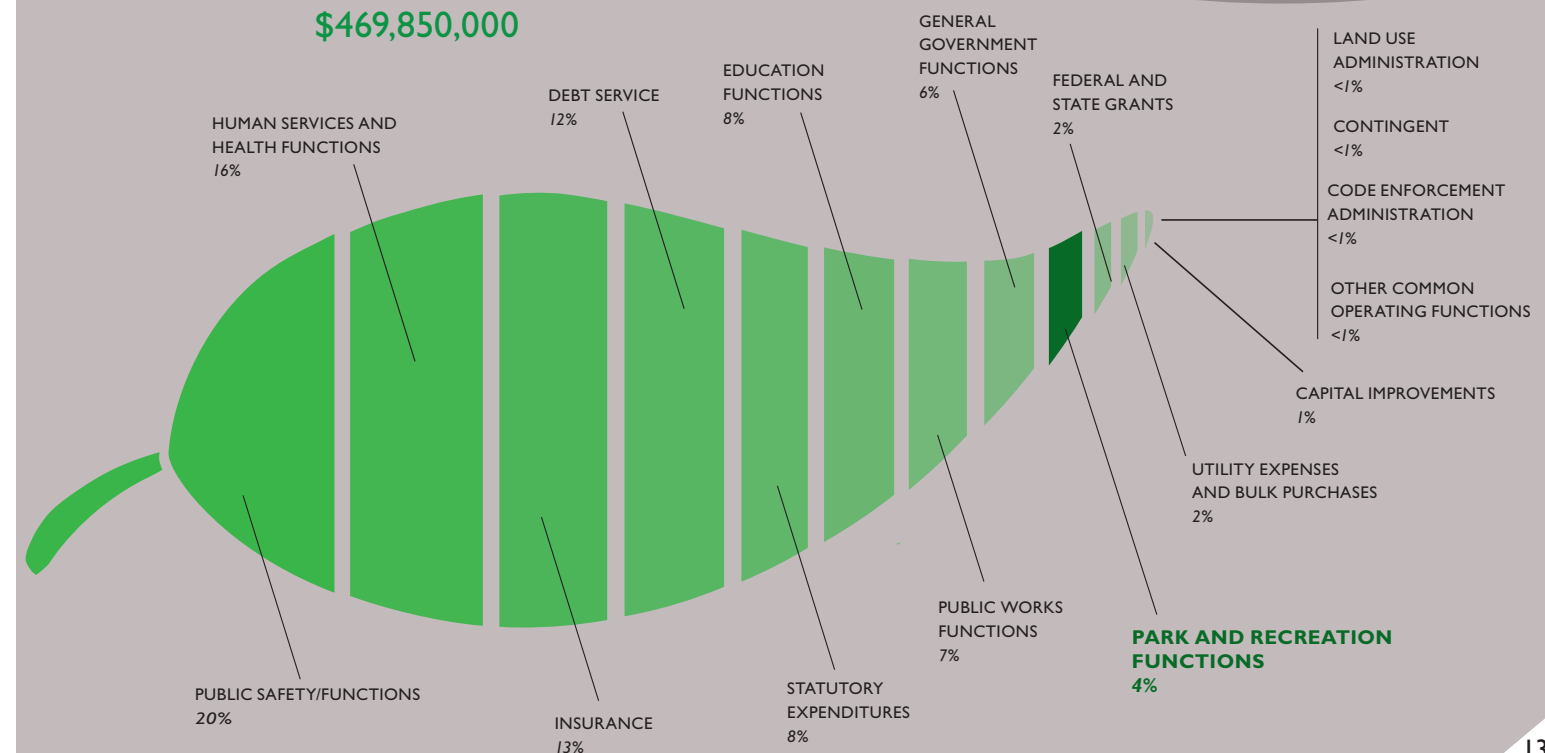
**\$38,751,718**

(EXCLUDING CAPITAL)



**MONMOUTH COUNTY BUDGET**

**\$469,850,000**



# VALUE OF IN-KIND

DONATIONS, CONTRIBUTIONS & GRANTS  
(unaudited)

## Donations and Contributions

### Friends of the Park

9-11 Memorial	\$ 7,993.00
Battery Lewis	13,090.00
Deep Cut Gardens	1,267.00
Employee Training	7,997.00
Environmental Summit	594.00
Historic Longstreet Farm	484.00
Holmdel Park	410.00
Hospitality	71.00
Manasquan Reservoir	386.00
Marketing	\$0.00
Public Information	2,500.00
Seven Presidents Oceanfront Park	1,582.00
Therapeutic Recreation Assistance	1,848.00
Thompson Park	2,162.00
Turkey Swamp Park	900.00
Urban Recreation Assistance	14,614.00
Volunteer Services	828.00

\$56,726.00

**Land** \$1,794,500.00

**Miscellaneous Donated Items** \$350.00

**Monmouth Conservation Foundation (MCF)**  
*Acquisition and Support Services* \$37,500.00

**Monmouth University Urban Rec. Camps** \$15,505.00

**Special People United to Ride (SPUR)**

Scholarships	\$33,285.00
In Kind Donations/Equipment & Misc. Items	885.75
Instructor Training	1,850.00
	\$36,020.75

**Sponsorships - Monmouth County Fair** \$10,000.00

### Grants

**Regional Transportation Alternatives Program Grant** \$700,000.00

### Project Cost-Share

**Lustgarten - Crosswicks Creek** \$20,741.00

### Volunteer Hours<sup>(a)</sup>

997 volunteers for a total of 23,294 hrs @ \$27.46 /hr \$639,653.24

### Community Service Hours<sup>(a)</sup>

2 individuals for a total 148 hrs @ \$27.46 /hr \$4,064.08

**Total** **\$3,315,060.07**

<sup>(a)</sup>Based on Independent Sector Value, 2016

## MONMOUTH COUNTY BOARD OF RECREATION COMMISSIONERS

*(Standing, left to right)*  
 Park System Secretary-Director James J. Truncer  
 Commissioner Thomas E. Hennessey Jr.  
 Commissioner Mark E. Zelina  
 Commissioner David W. Horsnall  
 Commissioner Michael G. Harmon

*(Seated, left to right)*  
 Commissioner Violeta Peters  
 Chairman Fred J. Rummel  
 Freeholder Liaison to the Park System Lillian G. Burry  
 Vice Chairman Kevin Mandeville  
 Commissioner Patricia M. Butch  
 Commissioner Thomas W. Adcock



## MONMOUTH COUNTY BOARD OF CHOSEN FREEHOLDERS

*(left to right)*  
 Director Thomas A. Arnone  
 Lillian G. Burry  
 Gary J. Rich  
 Deputy Director Serena DiMaso, Esq.  
 John P. Curley



## MONMOUTH COUNTY PARK SYSTEM ADMINISTRATION

*(Standing, left to right)*  
 Public Information Officer Karen Livingstone  
 Superintendent of Recreation Patricia Conroy  
 Secretary-Director James J. Truncer  
 County Park Superintendent, Golf Michael Janoski  
 County Park Superintendent, Parks Thomas Fobes  
 Director of Development Maria Wojciechowski  
 Assistant Director Andrew J. Spears

*(Seated, left to right)*  
 Chief of Land Acquisition and Design Gail Hunton  
 Office Services Manager Barbara Berry  
 Purchasing Agent Stephanie Weise  
 Director of Personnel, Training & Safety Kevin Dunn





Introducing NJ's native fence lizard. Fast and colored for camouflage, this one is male (determined by the bright blue markings on its underside). *Photo by Ian Biazzo*



**Headquarters:** 805 Newman Springs Road, Lincroft, NJ 07738  
732-842-4000

[www.MONMOUTHCOUNTYPARKS.COM](http://www.MONMOUTHCOUNTYPARKS.COM)



The Nation's First Accredited Park and Recreation Agency



Printed on recycled paper, certified by the Forest Stewardship Council  
Printed with environmentally-friendly ink

