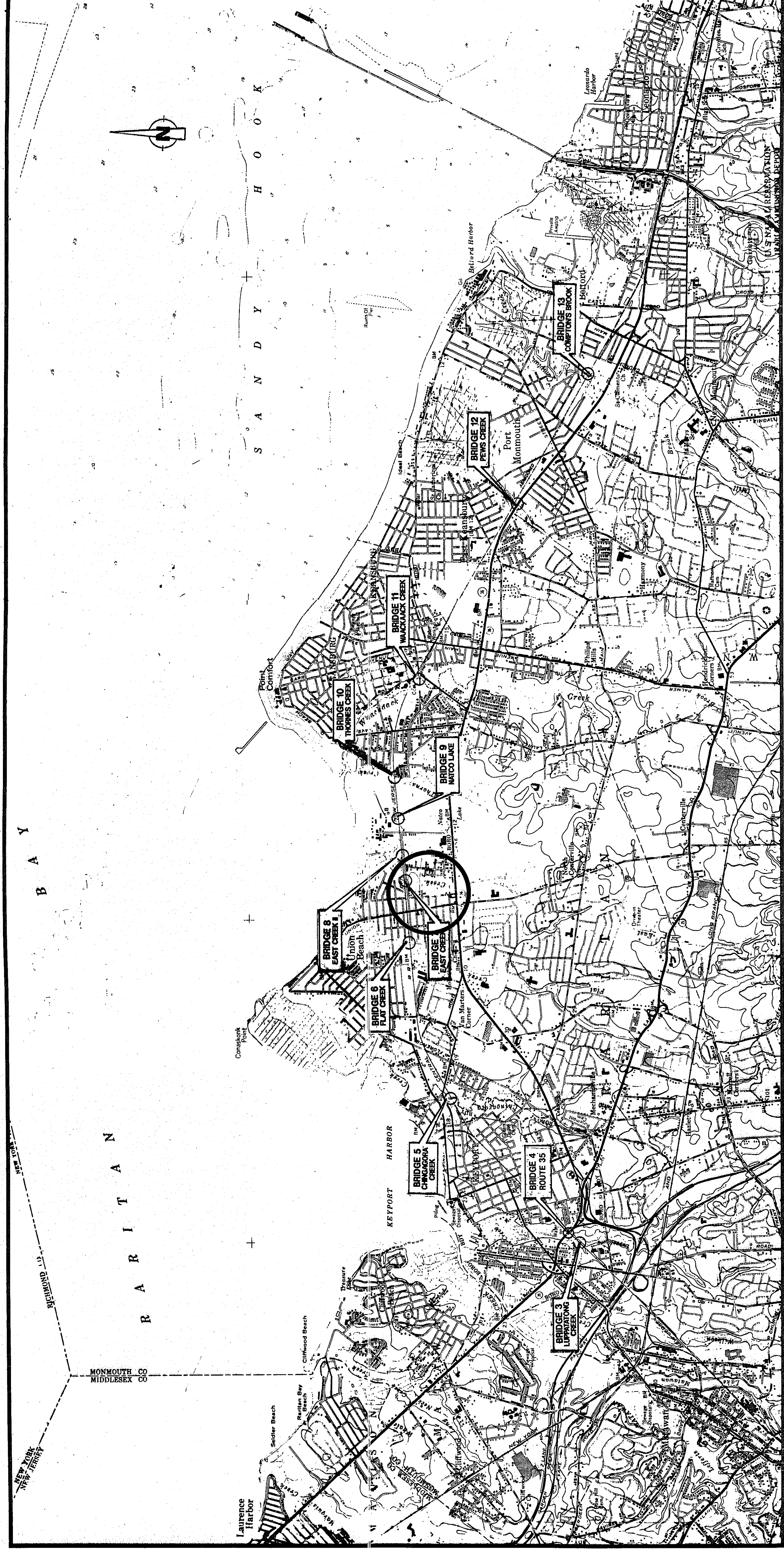
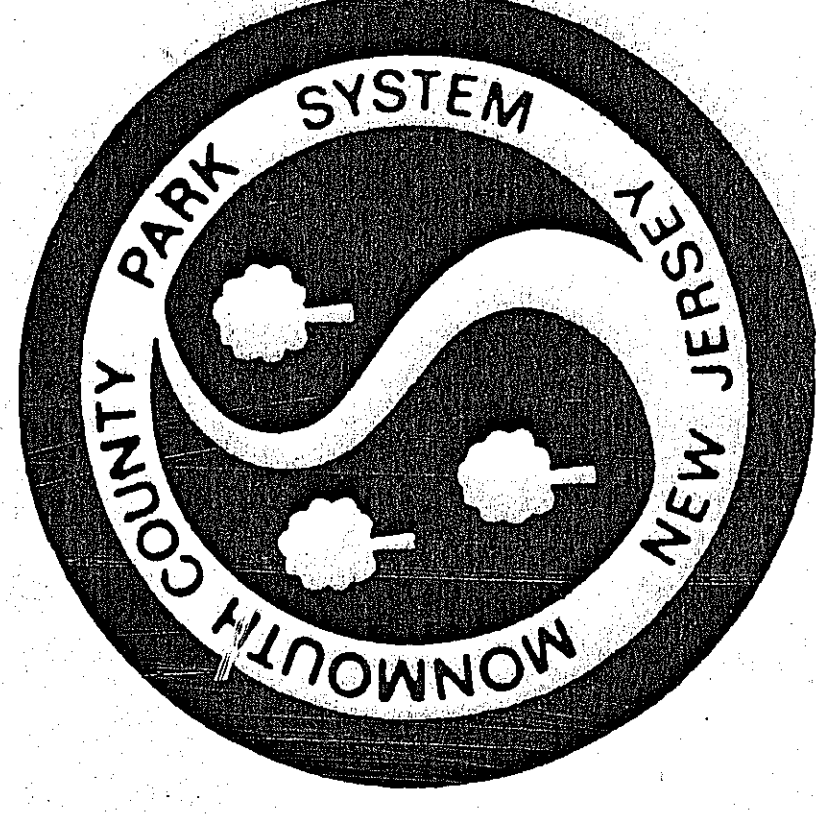


PLANS FOR
**THE REHABILITATION OF THE
 HENRY HUDSON TRAIL BRIDGES**



PREPARED FOR THE
**MONMOUTH COUNTY PARK SYSTEM
 BOARD OF RECREATION COMMISSIONERS**



FRENCH & PARRELO
 ASSOCIATES, P.A.

670 NORTH BEERS STREET, BLDG. #3 HOLMDEL, NEW JERSEY 07733 (908) 888-7700

FRENCH & PARRELO
 ASSOCIATES, P.A.
 CONSULTING ENGINEERS
 670 NORTH BEERS STREET, BLDG. #3
 HOLMDEL, NEW JERSEY 07733
 (908) 888-7700

LAURENCE E. FRENCH, P.E.
 ARGO T. PARRELO, P.E.
 JAMES M. WATKINS, P.E.
 JAMES B. HELLER, P.E.
 SCOTT D. WATKINS, P.E.
 TERRY D. BLACKBURN, P.E.

N.J. LIC. NO. 18430
 N.J. LIC. NO. 20489
 N.J. LIC. NO. 20574
 N.J. LIC. NO. 28874
 N.J. LIC. NO. 29773
 N.J. LIC. NO. 18593

DATE: 7/22/13
 SCALE: AS SHOWN
 JOB NO. 993286A
 DMC. NO. 1 of 13

PROJECT: PLANS FOR THE REHABILITATION OF THE
**HENRY HUDSON TRAIL
 BRIDGES**

TITLE SHEET

DRAWN BY: D.S.
 DATE: 6/7/93
 CHECKED BY: V.L.
 JOB NO. 993286A
 DMC. NO. 1 of 13

CONSTRUCT NEW WINGWALLS
APPROXIMATE LENGTH 10'
APPROXIMATE HEIGHT 5'

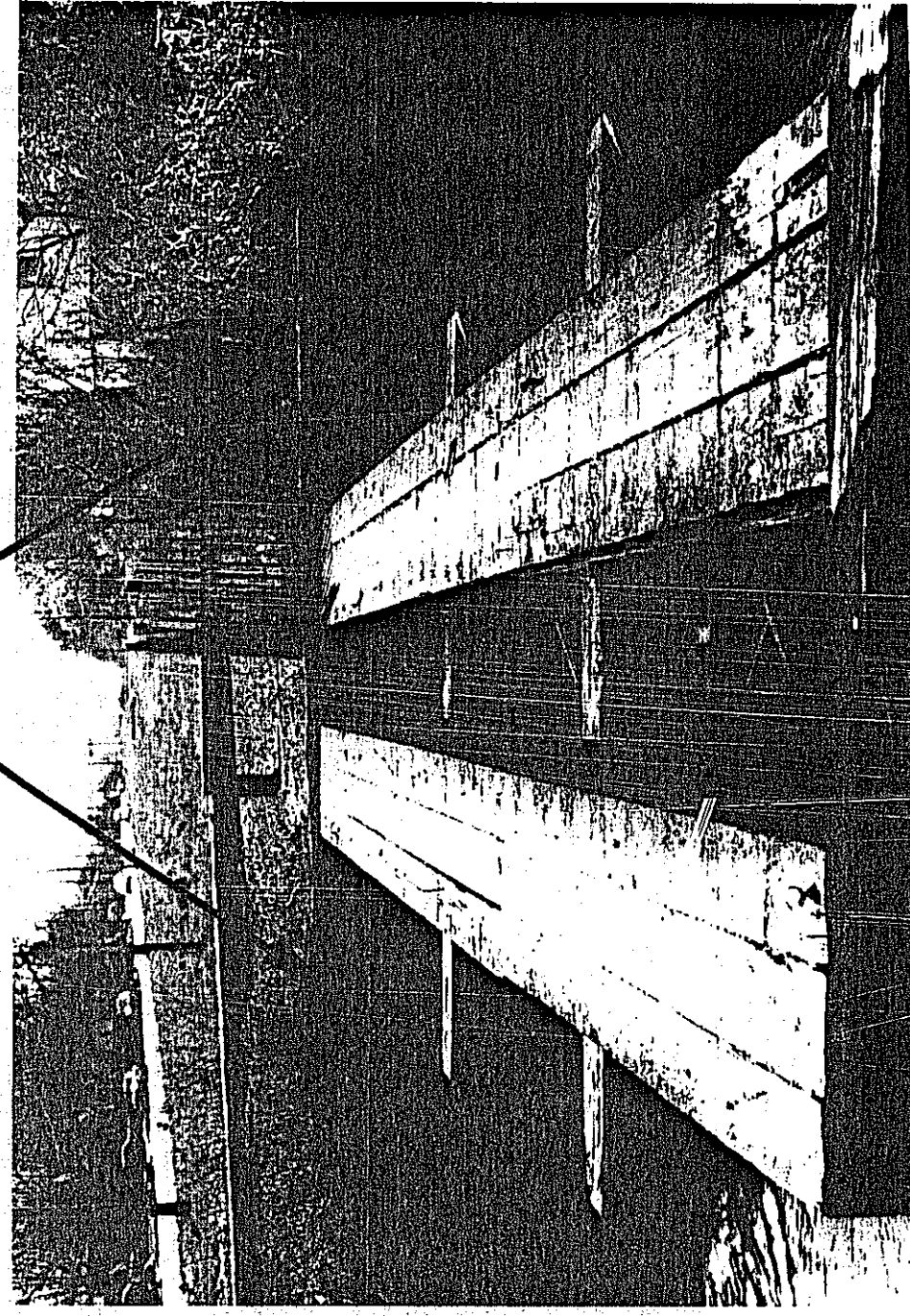


PHOTO # 1 : BRIDGE TOP SPAN LOOKING WEST

CONSTRUCT NEW WINGWALLS
APPROXIMATE LENGTH 10'
APPROXIMATE HEIGHT 5'

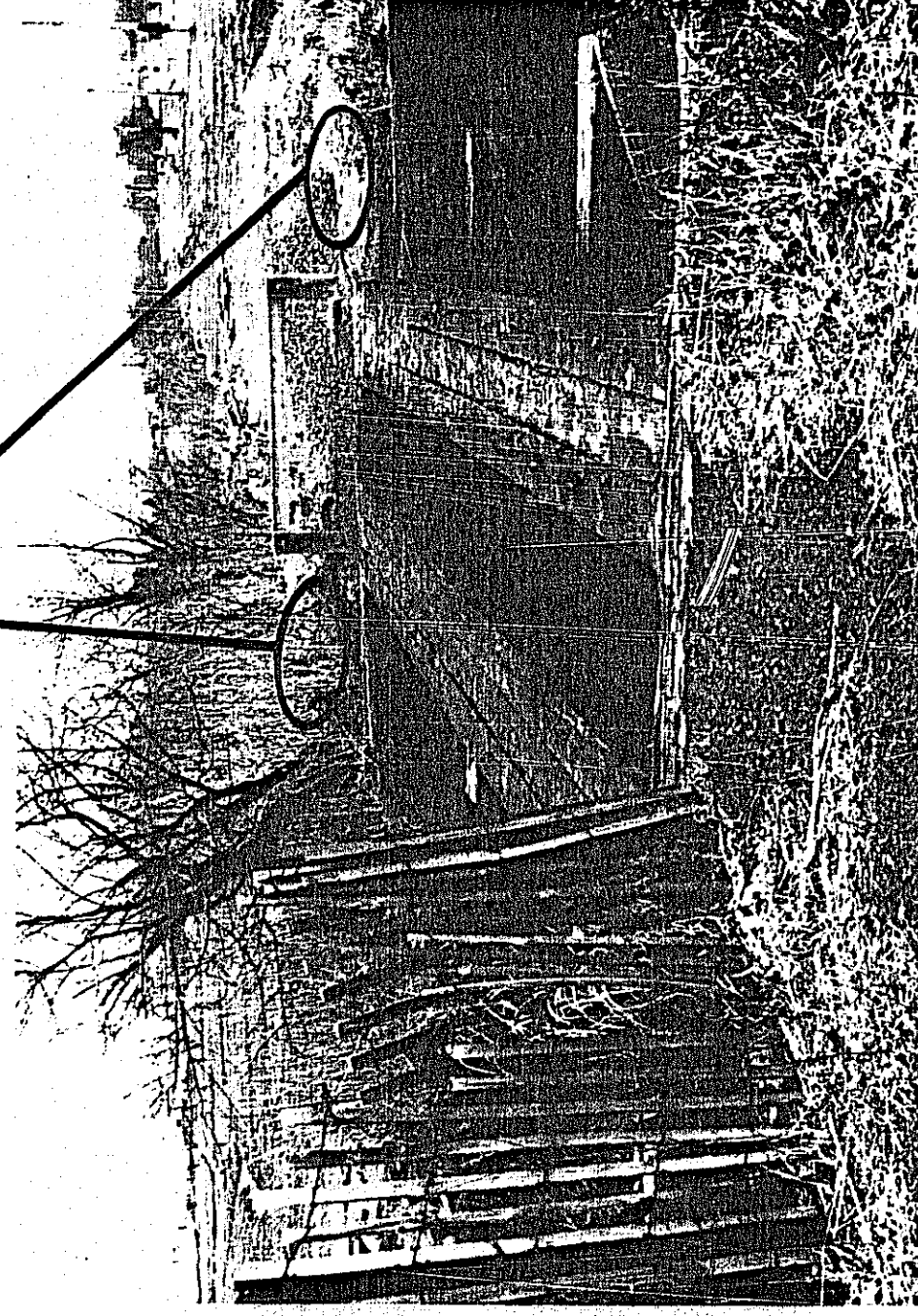


PHOTO # 2 : BRIDGE TOP SPAN LOOKING EAST

REPLACE TOP TWO ABUTMENT MEMBERS
APPROXIMATE LENGTH 24'

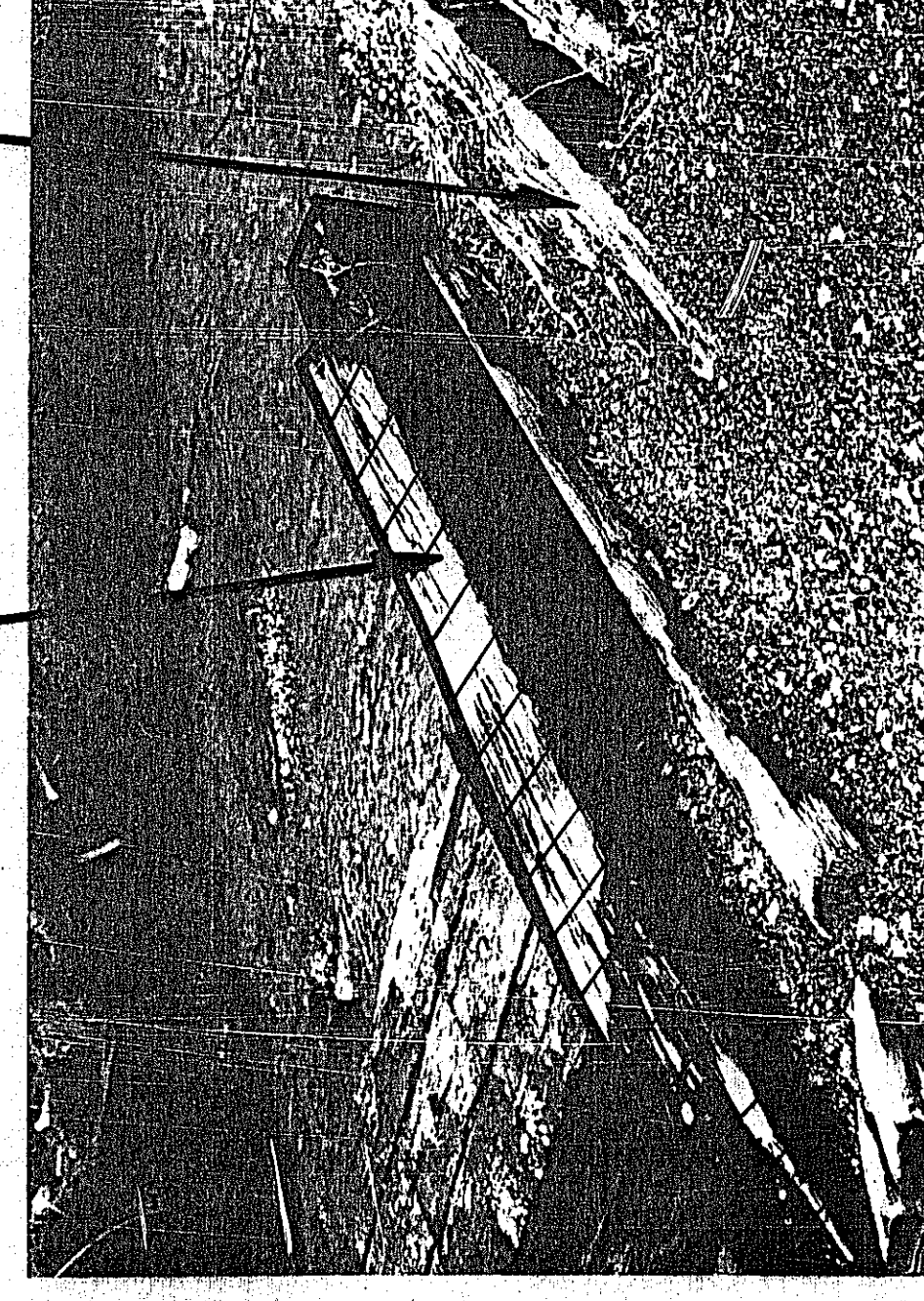
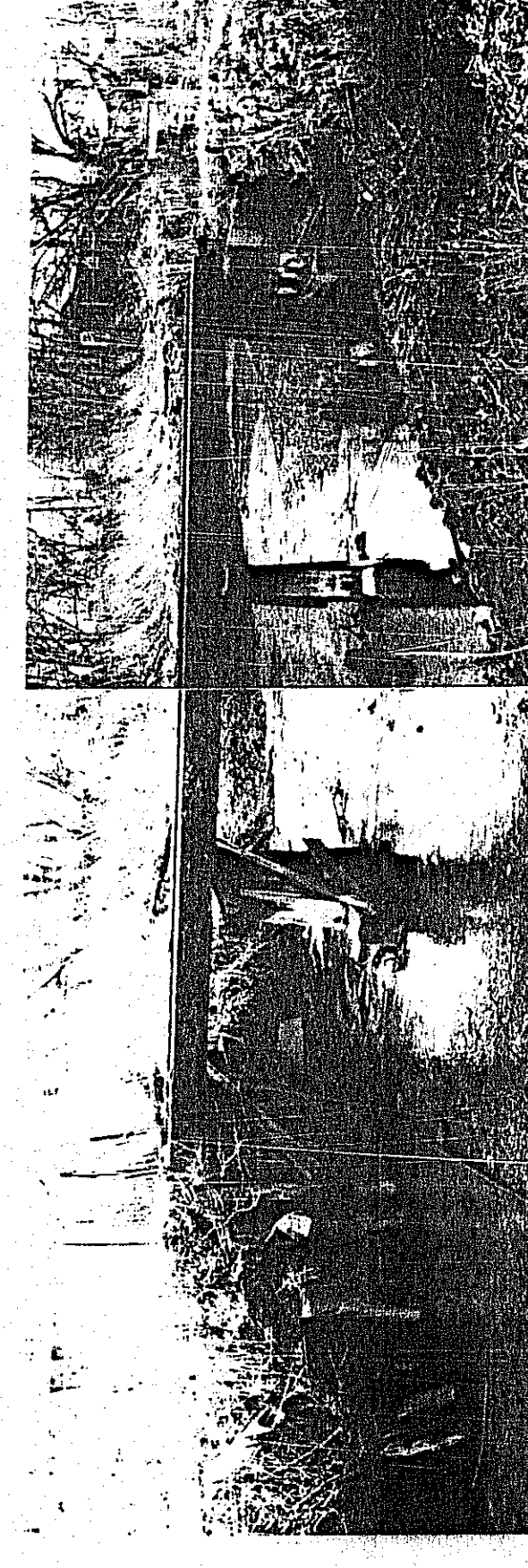


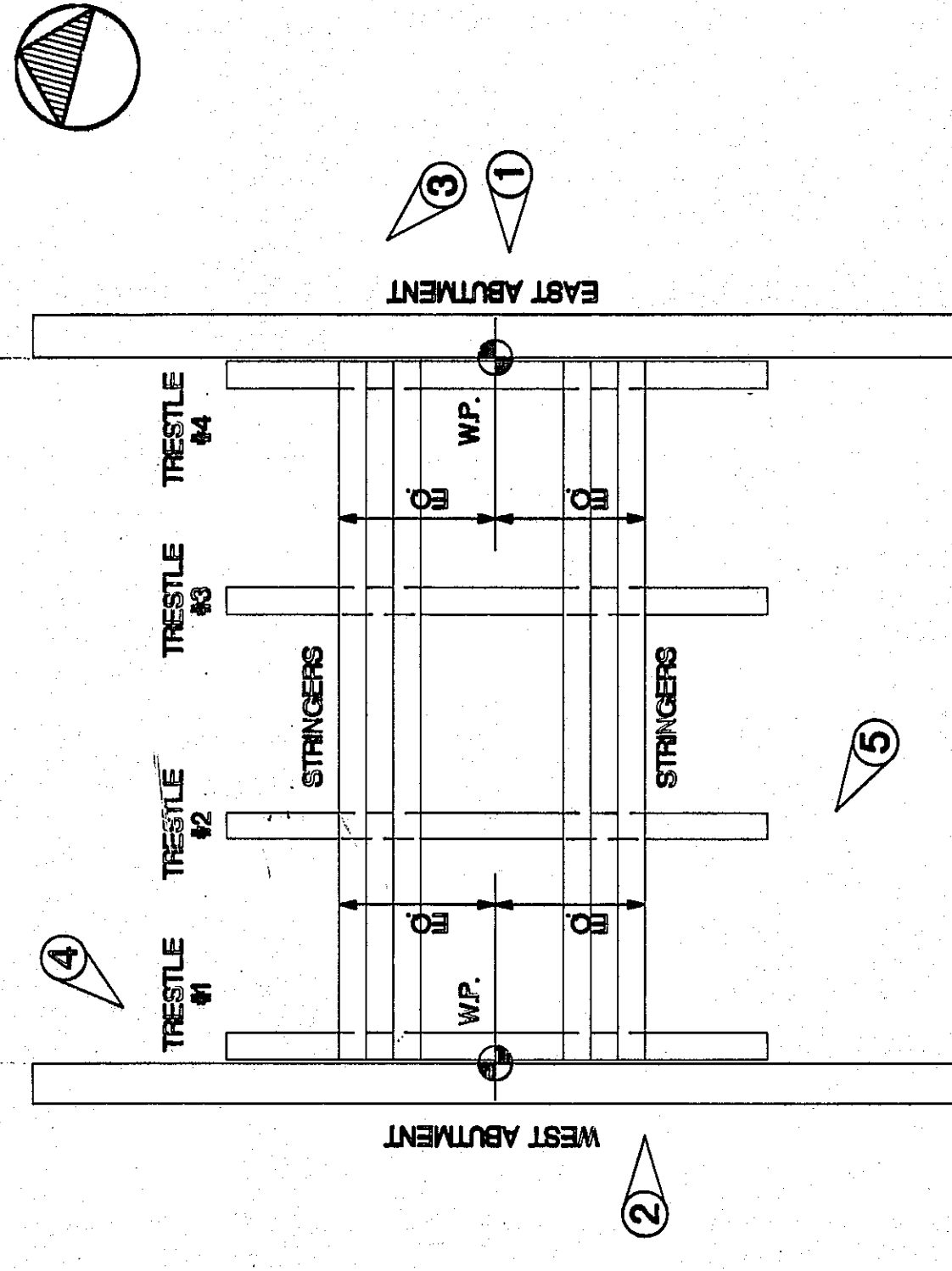
PHOTO # 3 : EAST ABUTMENT

REMOVE APPROACH
PLANKING



EAST CREEK BRIDGE PROFILE

136'
1:30'



PLAN VIEW

NOTE:

1. (C) INDICATES PHOTO NUMBER AND LOCATION COVER EXISTING STRINGERS WITH NEW WOOD DECK AND RAILINGS AS PER DETAILS SHEET 12.

EPOXY INJECT
TRESTLE HEADER

REPLACE TRESTLE # 2 BRACE
APPROXIMATE LENGTH 15'

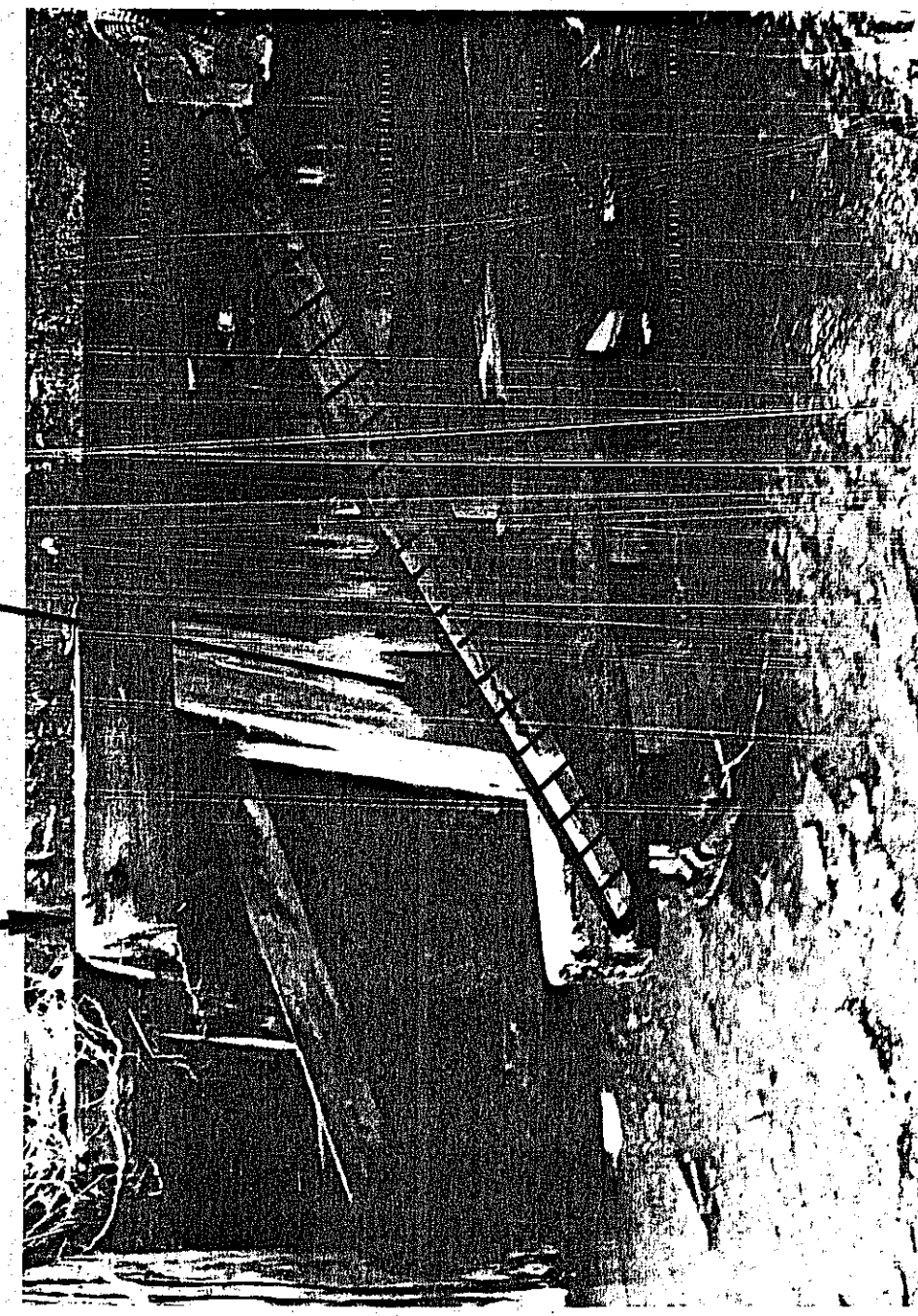


PHOTO # 5 : WEST ABUTMENT - SOUTHWEST CORNER

REMOVE EXISTING ABUTMENT AND
PROVIDE NEW ABUTMENT STRUCTURE
STABILIZE BACKFILL
WITH GEOTEXTILES

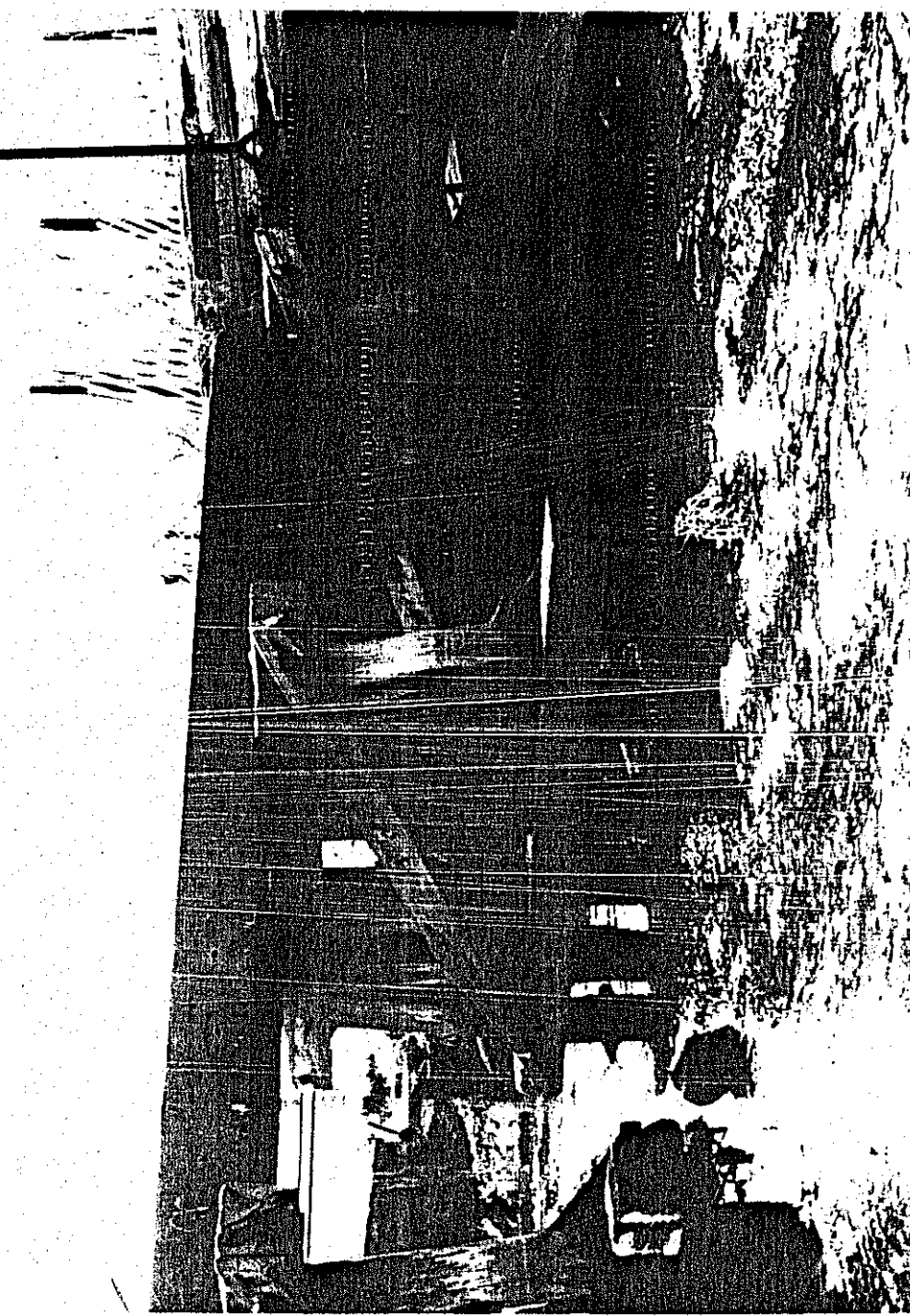


PHOTO # 4 : WEST ABUTMENT - NORTHWEST CORNER

PROJECT: PLANS FOR THE REHABILITATION OF THE HENRY HUDSON TRAIL BRIDGES		TITLE: BRIDGE # 7 EAST CREEK	
FRENCH & PARRELLO ASSOCIATES, P.A. CONSULTING ENGINEERS 801 North 2nd Street Horseneck, New Jersey 07733 (908) 847-1721		DRAWN BY: [Signature] DATE: 5/29/08 SCALE: N/A	
LAURENCE E. FRENCH, P.E. N.J. LIC. NO. 18430 ARCO T. PARRELLO, P.E. N.J. LIC. NO. 20488 JOSEPH M. EDWARDS, P.E. N.J. LIC. NO. 28724 SCOTT D. WATKINS, P.E. N.J. LIC. NO. 29177 TIMOTHY J. ALPHEA, P.E. N.J. LIC. NO. 18592 VINCE J. PARRELLO N.J. LIC. NO. 20488		CHECKED BY: [Signature] DATE: 5/29/08 SCALE: N/A	
DRAWING NO. 080804		SHEET NO. 8 OF 13	

