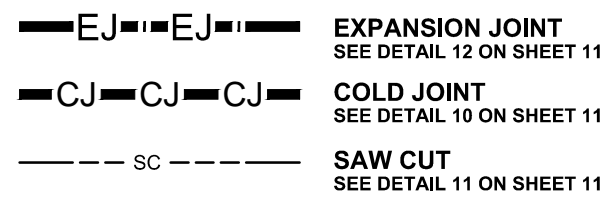
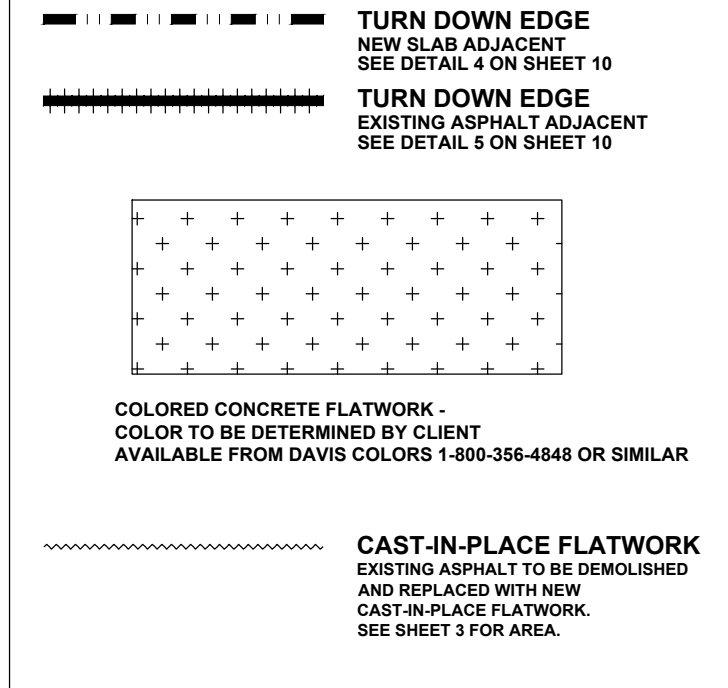






**INFORMATION LEGEND**

- ① 4" THICK CONCRETE FLAT WORK - SEE TYPICAL DETAILS ON SHEET 11
- ② 4" THICK COLORED CONCRETE FLAT WORK - SEE DETAIL 6 & TYPICAL DETAILS ON SHEET 11
- ③ NATURAL PRE-CAST CONCRETE SKATE ELEMENT WITH 6" THICK CONCRETE FOOTER - SEE DETAILS ON SHEET 11 & 12
- ④ COLORED PRE-CAST CONCRETE SKATE ELEMENT WITH 6" THICK CONCRETE FOOTER - SEE DETAILS ON SHEET 11 & 12
- ⑤ CANTILEVERED TRIANGULAR PLANTER GRIND LEDGE - SEE DETAIL 13 ON SHEET 11
- ⑥ FLAT GRIND RAIL - SEE DETAIL 21 & 22 ON SHEET 12
- ⑦ DOUBLE RAKED GRIND RAIL - SEE DETAIL 21 & 24 ON SHEET 12
- ⑧ BUMP TO FLAT GRIND RAIL - SEE DETAIL 21 & 23 ON SHEET 12
- ⑨ SINGLE KINKED RAKED GRIND RAIL - SEE DETAIL 21 & 25 ON SHEET 12
- ⑩ EXISTING SKATEPARK BOWL AND DECK SURROUND
- ⑪ EXISTING SKATEPARK BANK
- ⑫ EXISTING ASPHALT

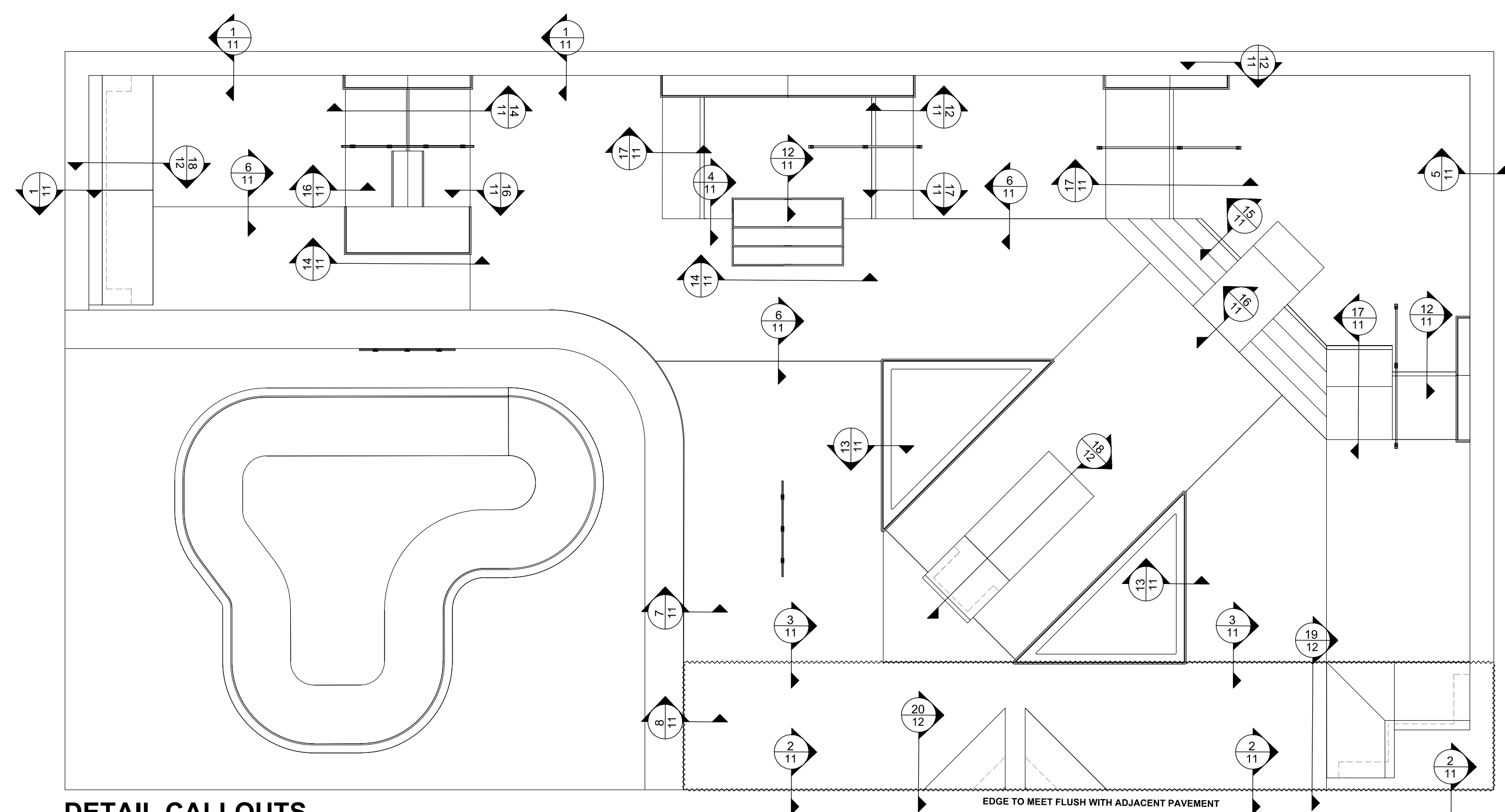


**\*\*JOINT PLAN HAS BEEN DEVELOPED TO PROVIDE GUIDANCE TO THE CONTRACTOR FOR THE USE OF SAW CUTS, COLD & EXPANSION JOINTS. ACTUAL FIELD VARIANCES WILL TAKE PRECEDENCE OVER THIS GUIDE. CONTRACTOR SHALL CUT SLAB AS NEEDED TO PREVENT CRACKING.**

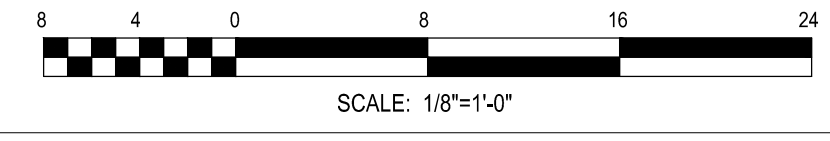
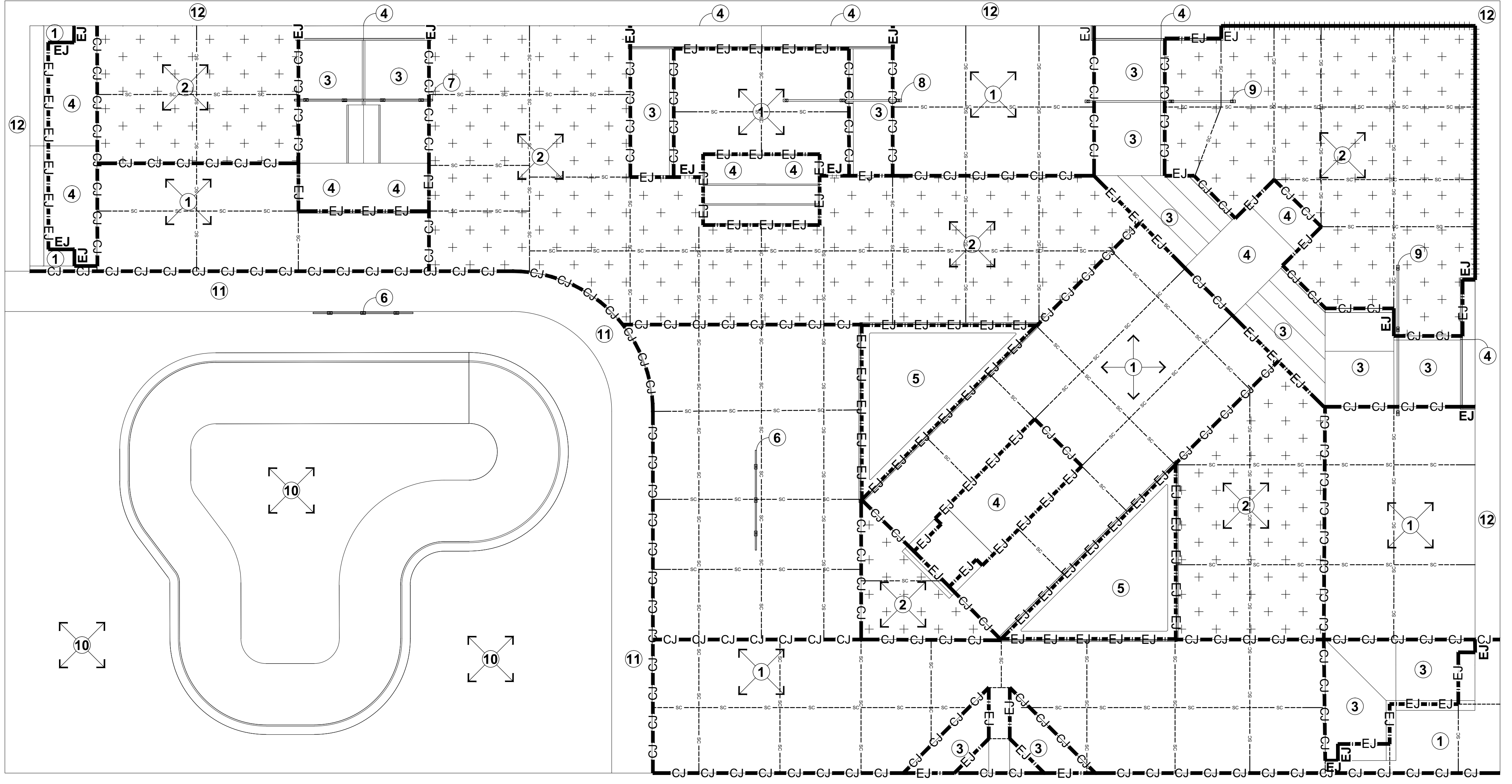
ALIGN SAW CUTS WITH EXPANSION AND COLD JOINTS AND START FROM CORNERS WHERE POSSIBLE TO PREVENT EXCESS CRACKING. SAW CUTS SHALL BE NO MORE THAN 10' X 12' AND/OR NOT TO EXCEED 120 SQUARE FEET AND A 2:1 MAX. RATIO BETWEEN SAW CUTS AND COLD OR EXPANSION JOINTS.

ALL SAW CUTS TO BE FILLED WITH SELF-LEVELING POLYURETHANE SEALANT AND TOOLED FLAT. EXPANSION JOINTS TO BE FILLED WITH POLYURETHANE BASED NON-SAGGING ELASTOMERIC SEALANT AND TOOLED FLAT. COLOR OF CAULK SHOULD RESEMBLE COLOR OF CONCRETE (ALUMINUM GRAY OR SIMILAR)

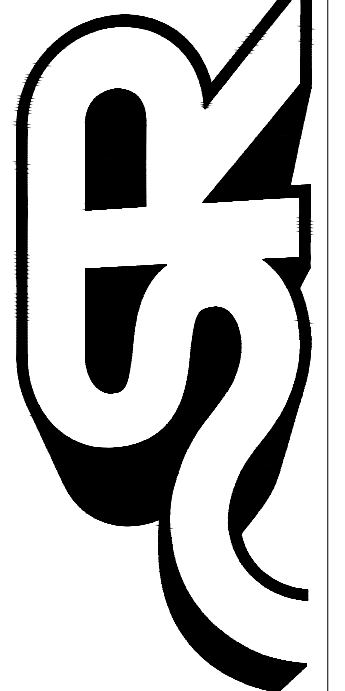
**\*\* PROVIDE 1/8" TOOLED EDGES TO JOINTS - SEE TYPICAL DETAILS & CONSTRUCTION SPECIFICATIONS FOR JOINT INFORMATION & INSTALLATION.**



**DETAIL CALLOUTS**  
NOT TO SCALE



**SPOHN RANCH SKATE PARKS**  
DESIGN. BUILD. COME TOGETHER.  
6824 S. CENTINELA AVE. - LOS ANGELES, CA 90020  
OFFICE (626) 330-5803 - FAX (626) 330-5803



The use of these plans shall be restricted to the original site for which they were prepared, and publication thereof is limited to the use of these plans or concepts by any method, in whole or part, without express written consent of Spoon Ranch, Inc. All rights reserved. Title to these plans and concepts belongs to Spoon Ranch, Inc. without prejudice. Visual contact with or reproduction of these plans without the written consent of Spoon Ranch, Inc. constitutes acceptance of these restrictions. Copyright © 2014 Spoon Ranch, Inc.

SKATE PARK DESIGNED BY		REVISIONS	
NO	DATE	NO	DESCRIPTION
DPS			
CW/BC/SLS			
SLS/SDH			
DATE	11-12-14		

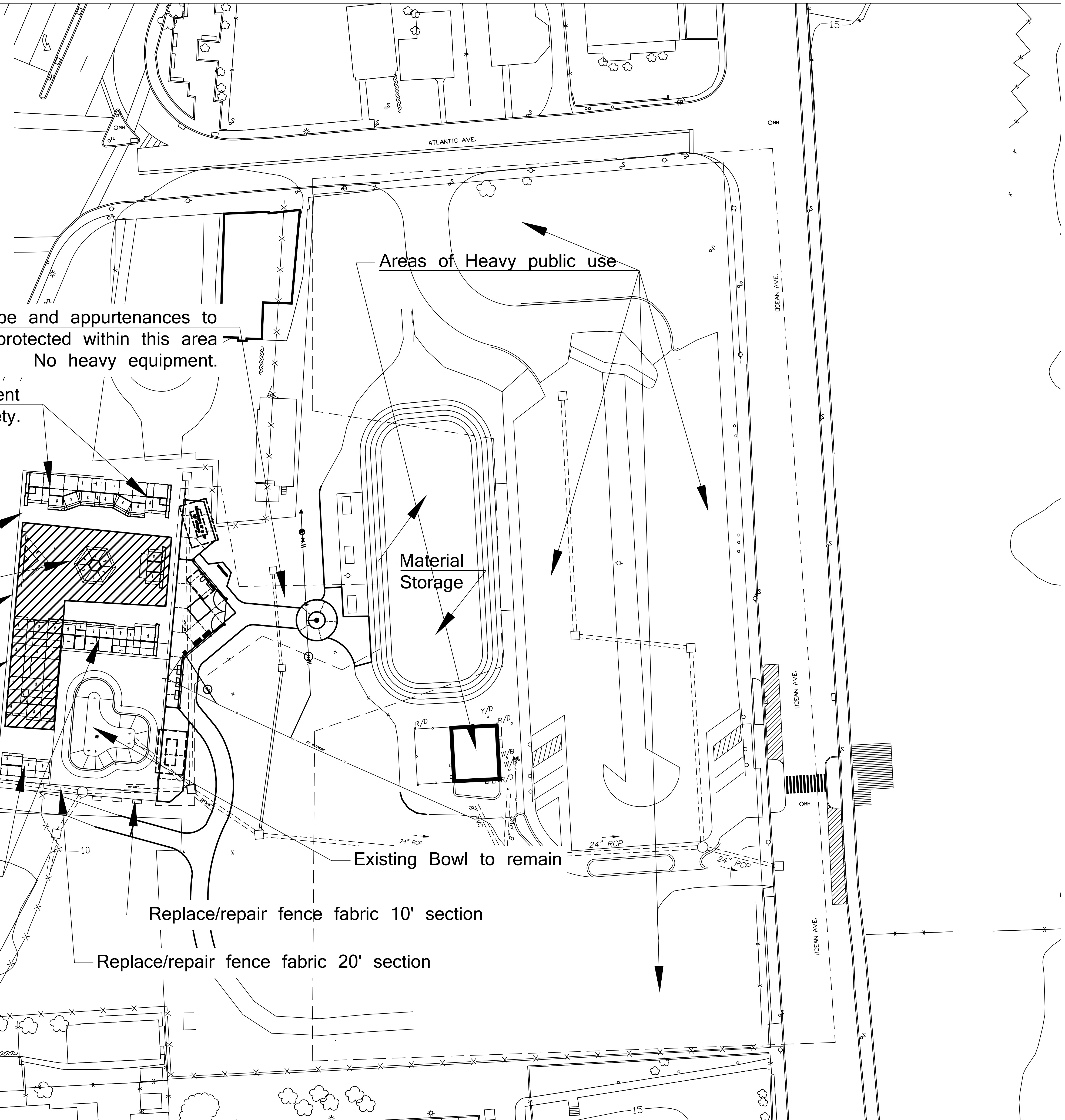
PROJECT TITLE  
**LONG BRANCH, NJ**

SHEET TITLE  
**INFORMATION PLAN**

SHEET NO.  
**6**

OF 12

1. Contractor is responsible for submittal of access/mobilization plan for site.
2. Parking, rest rooms and remainder of site will be open to public during construction of skatepark.
3. Contractor is responsible for all damage to site and shall restore to its pre-existing condition or better.
4. Contractor shall submit plan for protection of worksite including of all underground utilities and hardscape to Owner for approval
5. Should Contractor remove/damage fence in areas other then noted, it shall be replaced/repared at no additional cost to the Owner



All hardscape and appurtenances to be protected within this area  
No heavy equipment.

Remove & dispose of existing skate equipment in its entirety.

Replace/repair fence fabric 20' section

Salvage skate equipment in hatched area

Replace/repair fence fabric 30' section

Replace/repair fence fabric 30' section

Replace/repair fence fabric 30' section

Remove & dispose of existing skate equipment in its entirety.

Replace/repair fence fabric 10' section

Replace/repair fence fabric 20' section

Existing Bowl to remain

Material Storage

Areas of Heavy public use

**SPOT ELEVATION LEGEND**

- \* EXISTING SPOT ELEVATIONS FROM ORIGINAL ATLANTIS AERIAL SURVEY 1999
- \* EXISTING GROUND SHOTS FROM MASER ENGINEERING 2005
- \* EXISTING GROUND SHOTS FROM MCPS 2007
- \* DESIGN SPOT ELEVATION INSTALLED (NO AS-BUILT VERIFICATION) 2008

REV \_\_\_\_\_ DATE \_\_\_\_\_ BY \_\_\_\_\_

THESE DRAWINGS, SPECIFICATIONS AND DESIGNS ARE THE PROPERTY OF THE MONMOUTH COUNTY PARK SYSTEM (MCPS). NO PART THEREOF SHALL BE COPIED OR USED WITH ANY OTHER WORK OTHER THAN THE SPECIFIC PROJECT FOR WHICH THEY HAVE BEEN DEVELOPED. WITHOUT THE WRITTEN CONSENT OF MCPS, MCPS WAIVES ANY AND ALL RESPONSIBILITY AND LIABILITY FOR PROBLEMS WHICH ARISE FROM FAILURE TO FOLLOW THESE PLANS, SPECIFICATIONS AND DESIGN INTENT. THEY CONVEY, OR FOR PROBLEMS WHICH ARISE FROM OTHERS' FAILURE TO OBTAIN AND/OR FOLLOW THE DESIGN PROFESSIONAL'S GUIDANCE WITH RESPECT TO ANY ERRORS, OMISSIONS, INCONSISTENCIES, AMBIGUITIES OR CONFLICTS WHICH ARE ALLEGED.

MONMOUTH COUNTY PARK SYSTEM  
BOARD OF PARK AND RECREATION COMMISSIONERS



OVERALL SITE PLAN  
SEVEN PRESIDENTS SKATEPLEX  
ATLANTIC AVENUE, LONG BRANCH, NJ

DATE 3/02/2015 SCALE 1"=30' PROJECT # \_\_\_\_\_ DRAWN \_\_\_\_\_ CHECKED JVS