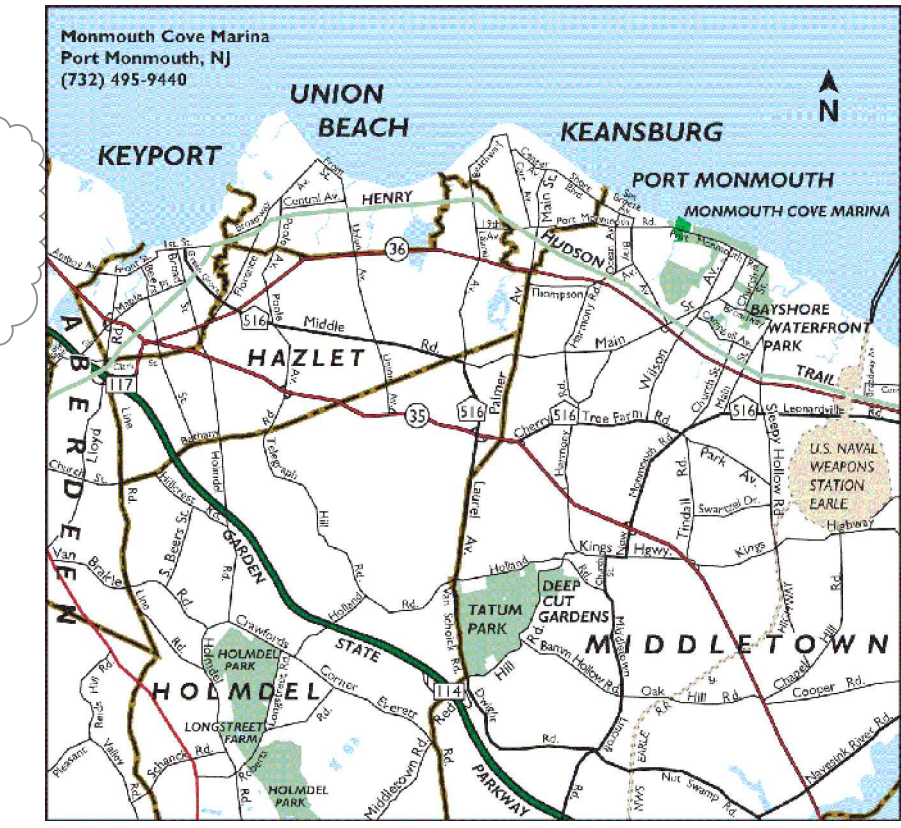
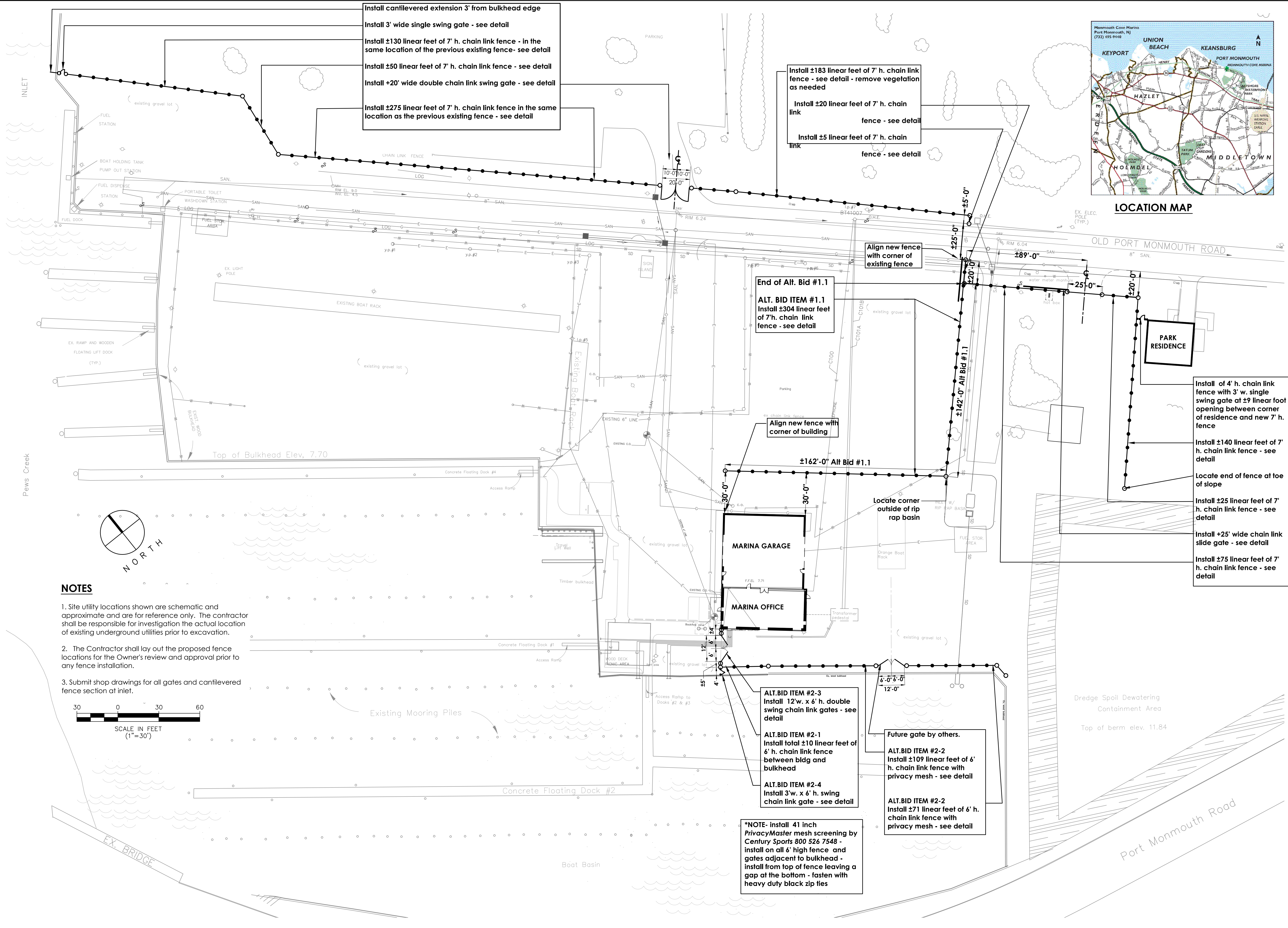


Install cantilevered extension 3' from bulkhead edge
 Install 3' wide single swing gate - see detail
 Install ±130 linear feet of 7' h. chain link fence - in the same location of the previous existing fence - see detail
 Install ±50 linear feet of 7' h. chain link fence - see detail
 Install +20' wide double chain link swing gate - see detail
 Install ±275 linear feet of 7' h. chain link fence in the same location as the previous existing fence - see detail

Install ±183 linear feet of 7' h. chain link fence - see detail - remove vegetation as needed
 Install ±20 linear feet of 7' h. chain link fence - see detail
 Install ±5 linear feet of 7' h. chain link fence - see detail



LOCATION MAP



Align new fence with corner of existing fence

End of Alt. Bid #1.1
 ALT. BID ITEM #1.1
 Install ±304 linear feet of 7' h. chain link fence - see detail

Align new fence with corner of building

±162'-0" Alt Bid #1.1

Install of 4' h. chain link fence with 3' w. single swing gate at ±9' linear foot opening between corner of residence and new 7' h. fence

Install ±140 linear feet of 7' h. chain link fence - see detail

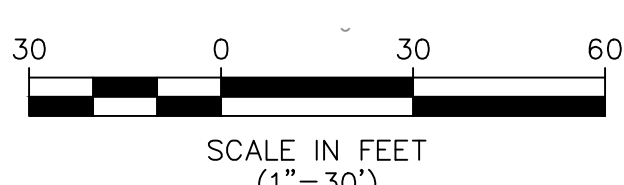
Locate end of fence at toe of slope

Install ±25 linear feet of 7' h. chain link fence - see detail

Install +25' wide chain link slide gate - see detail

Install ±75 linear feet of 7' h. chain link fence - see detail

NOTES
 1. Site utility locations shown are schematic and approximate and are for reference only. The contractor shall be responsible for investigation the actual location of existing underground utilities prior to excavation.
 2. The Contractor shall lay out the proposed fence locations for the Owner's review and approval prior to any fence installation.
 3. Submit shop drawings for all gates and cantilevered fence section at inlet.



ALT. BID ITEM #2-3
 Install 12' w. x 6' h. double swing chain link gates - see detail
 ALT. BID ITEM #2-1
 Install total ±10 linear feet of 6' h. chain link fence between bldg and bulkhead
 ALT. BID ITEM #2-4
 Install 3' w. x 6' h. swing chain link gate - see detail

Future gate by others.
 ALT. BID ITEM #2-2
 Install ±109' linear feet of 6' h. chain link fence with privacy mesh - see detail
 ALT. BID ITEM #2-2
 Install ±71 linear feet of 6' h. chain link fence with privacy mesh - see detail

*NOTE- install 41 inch PrivacyMaster mesh screening by Century Sports 800 526 7548 - install on all 6' high fence and gates adjacent to bulkhead - install from top of fence leaving a gap at the bottom - fasten with heavy duty black zip ties

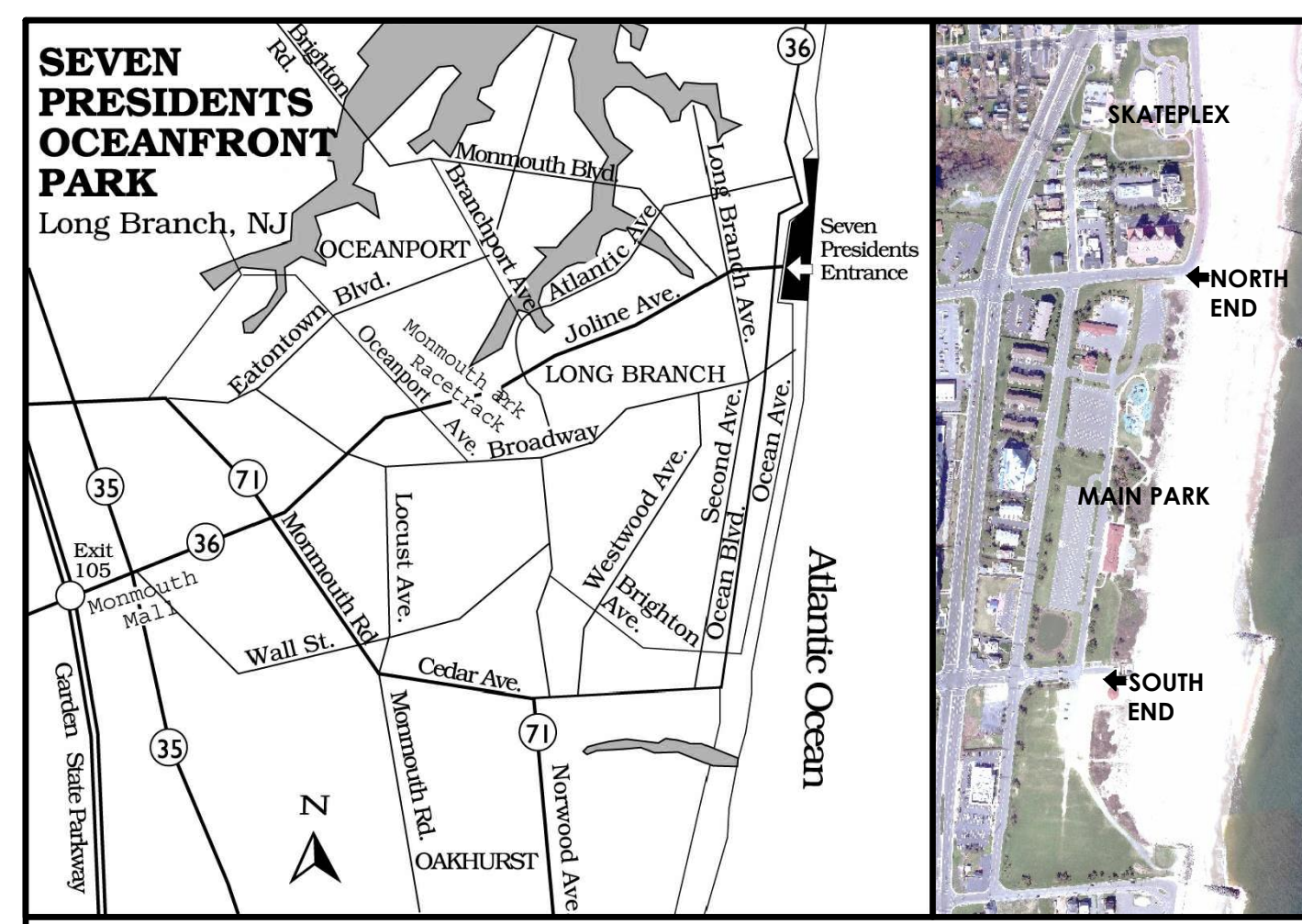
REVISION	DATE	CHECKED BY

MONMOUTH COUNTY PARK SYSTEM
 BOARD OF PARK AND RECREATION COMMISSIONERS
 805 NEWMAN SPRINGS ROAD
 LINGROFT, NEW JERSEY 07738-1965
 PHONE (732) 842-4000 FAX (732) 842-3640

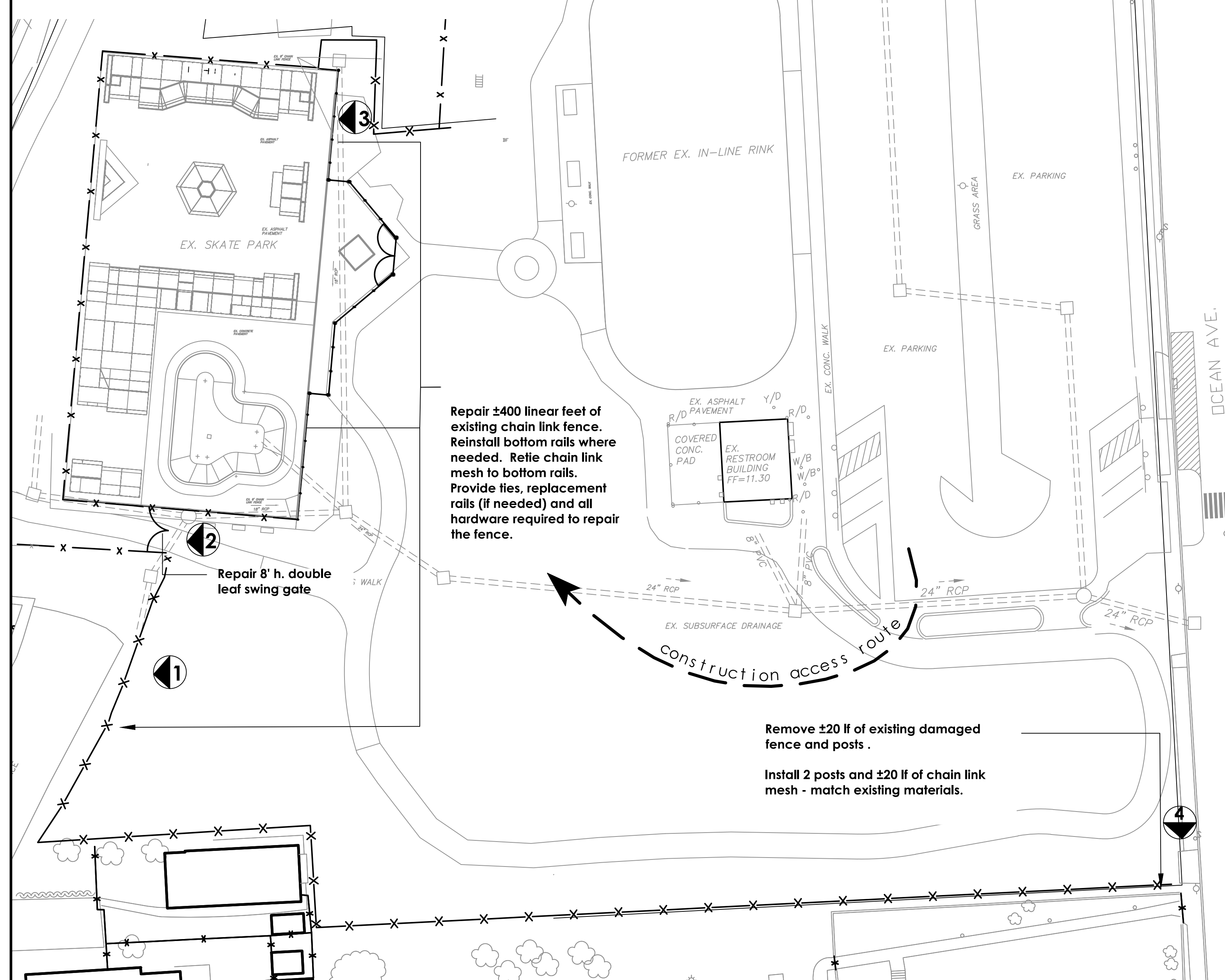


Site Plan - Chain Link Fence Installation & Repairs
Monmouth Cove Marina
200 Old Port Monmouth Rd, Middletown, NJ

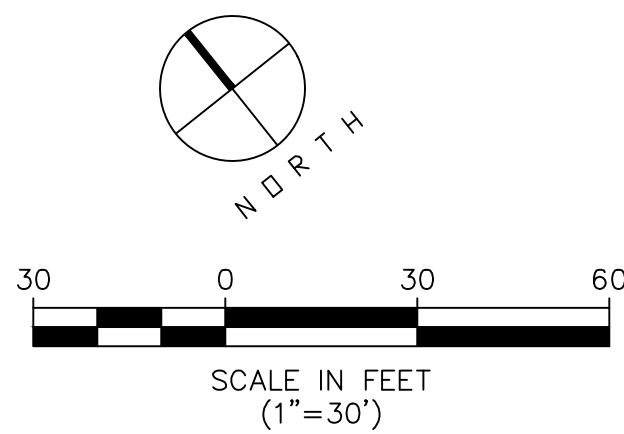
DATE	SCALE	PROJECT #	DRAWN	RO	CHECKED
3.27.13	shown	133305			



LOCATION MAP

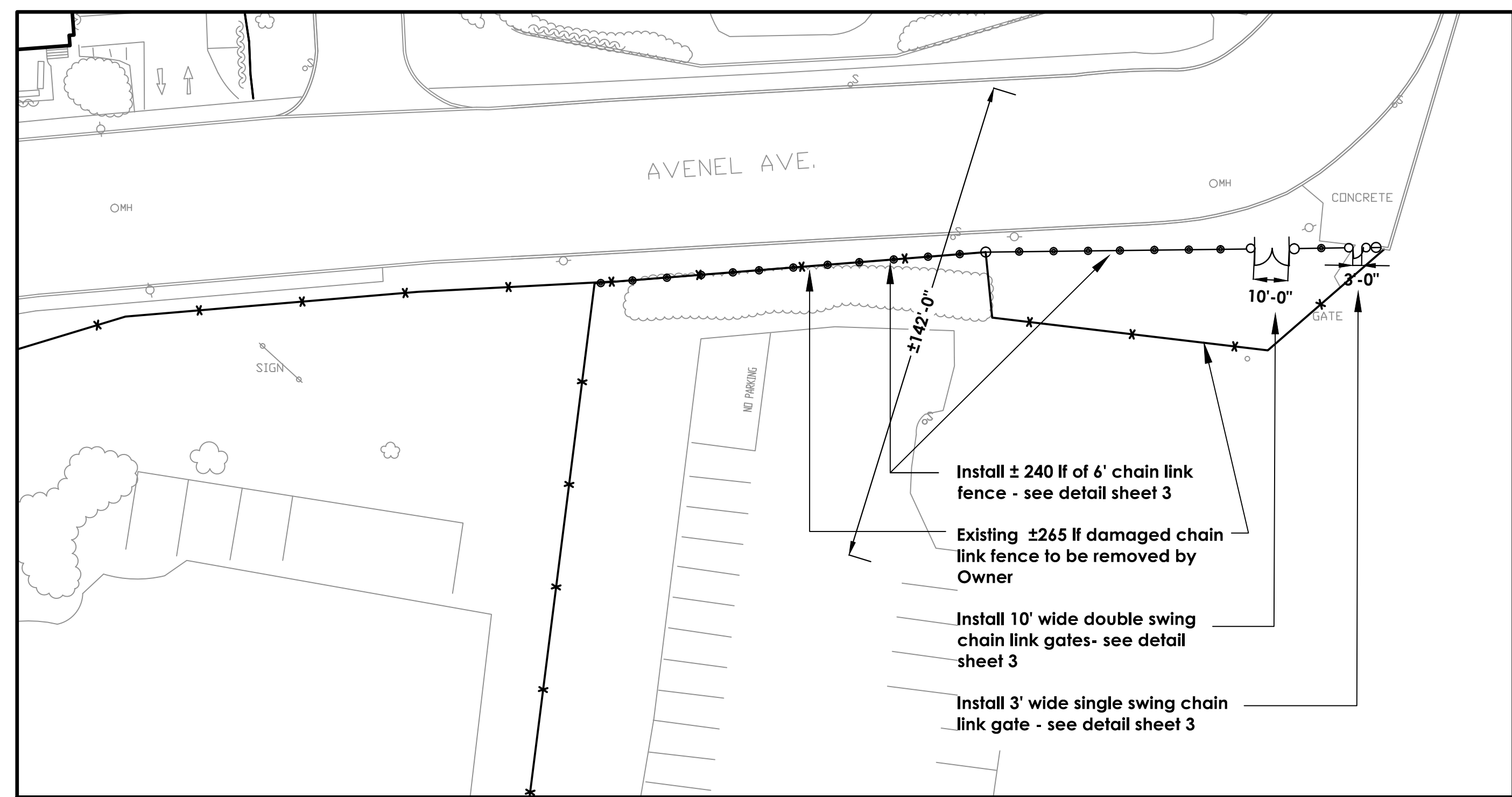


SKATEPLEX FENCE PLAN



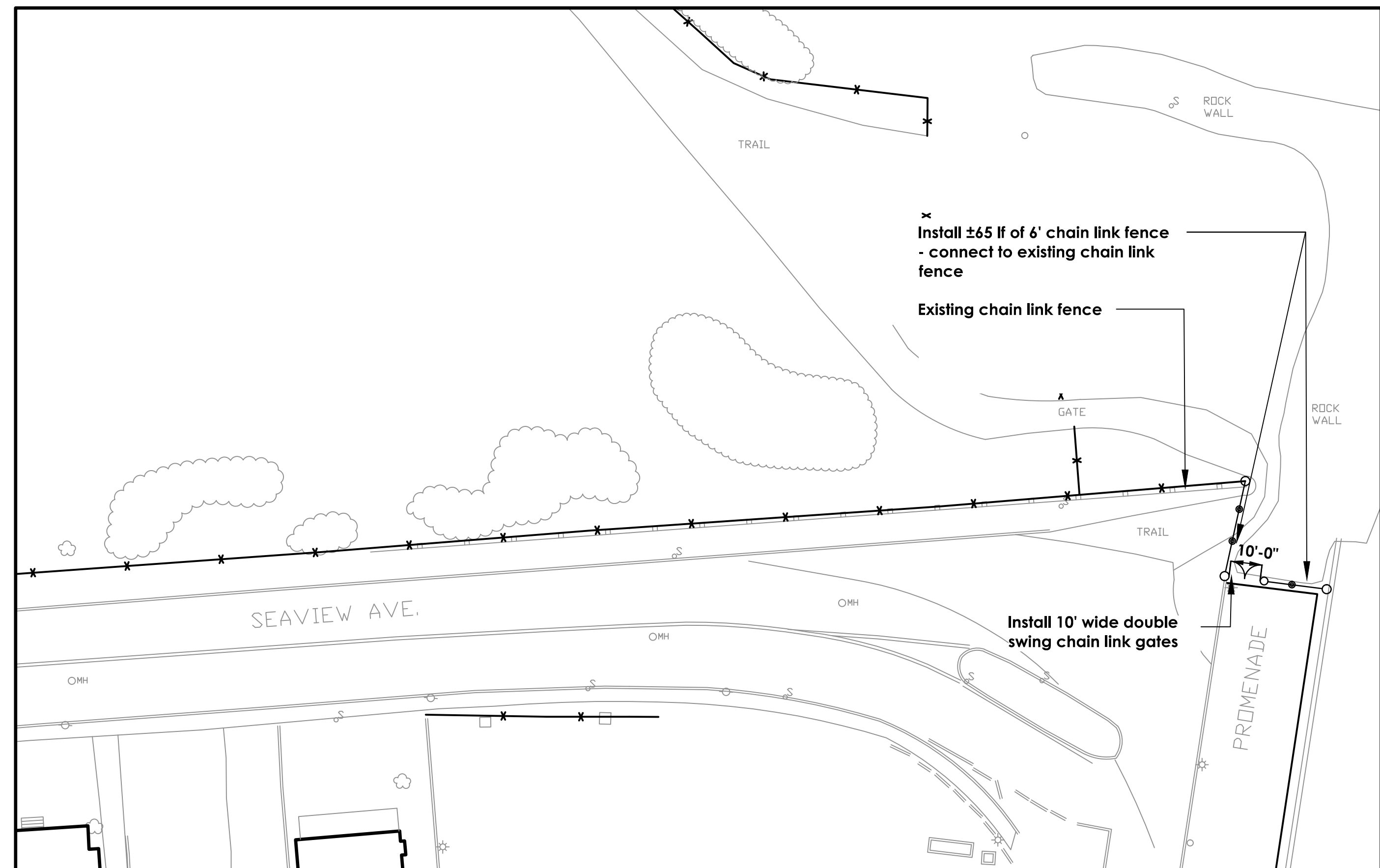
NOTES

1. Site utility locations shown are schematic and approximate and are for reference only. The contractor shall be responsible for investigation the actual location of existing underground utilities prior to excavation.
2. The Contractor shall lay out the proposed fence locations for the Owner's review and approval prior to any fence installation.
3. Submit shop drawing for all gates.



NORTH END OF MAIN PARK - FENCE PLAN

- Install ± 240 lf of 6' chain link fence - see detail sheet 3
- Existing ±265 lf damaged chain link fence to be removed by Owner
- Install 10' wide double swing chain link gates- see detail sheet 3
- Install 3' wide single swing chain link gate - see detail sheet 3



SOUTH END OF MAIN PARK - FENCE PLAN

- Install ±65 lf of 6' chain link fence - connect to existing chain link fence
- Existing chain link fence

- Install 10' wide double swing chain link gates



PHOTO 1



PHOTO 2

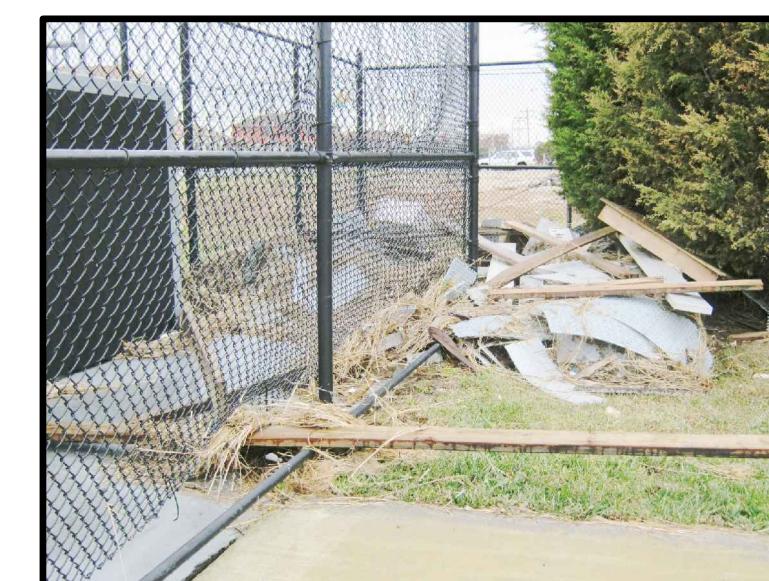


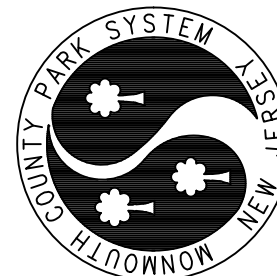
PHOTO 3

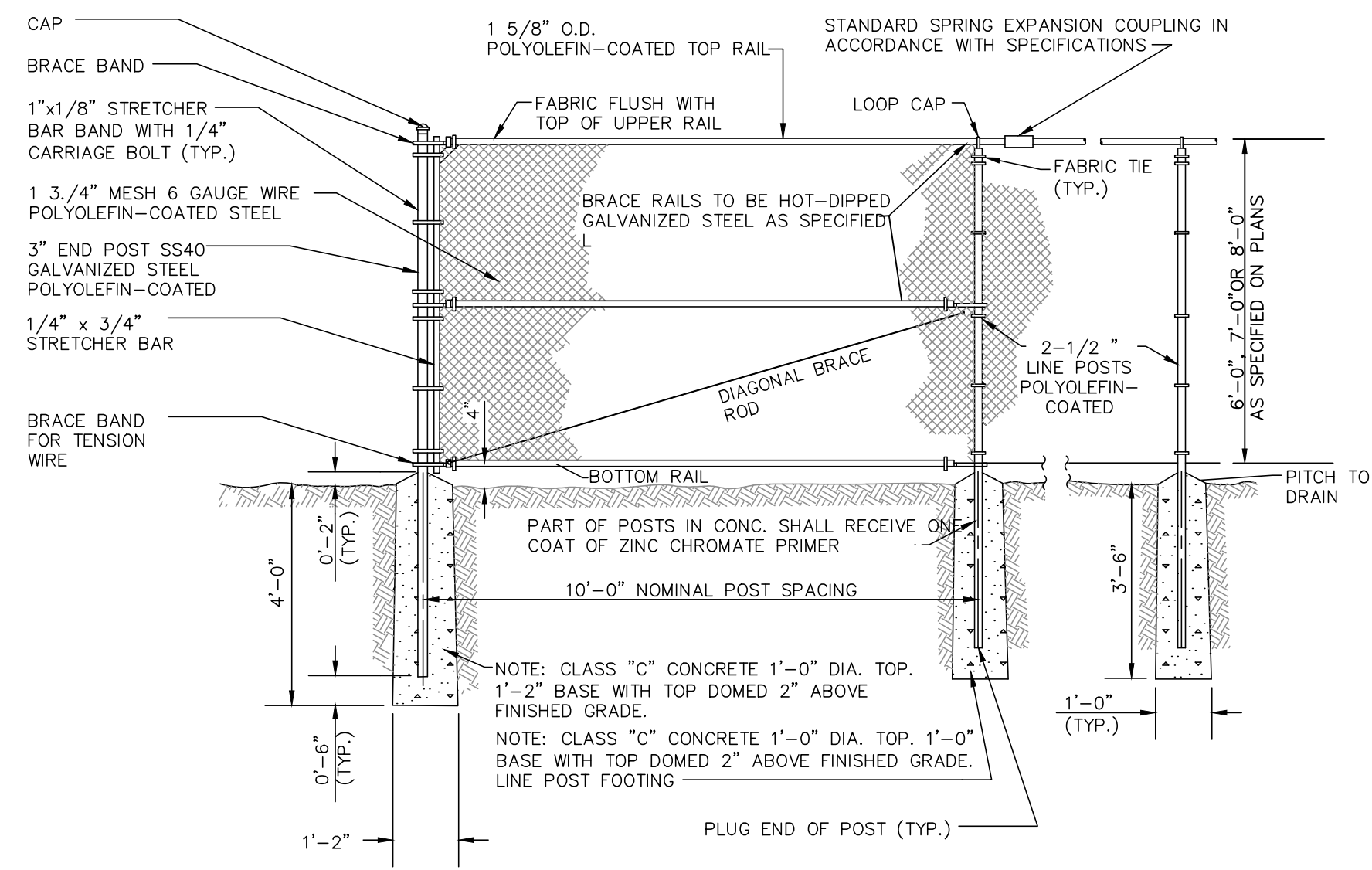


PHOTO 4

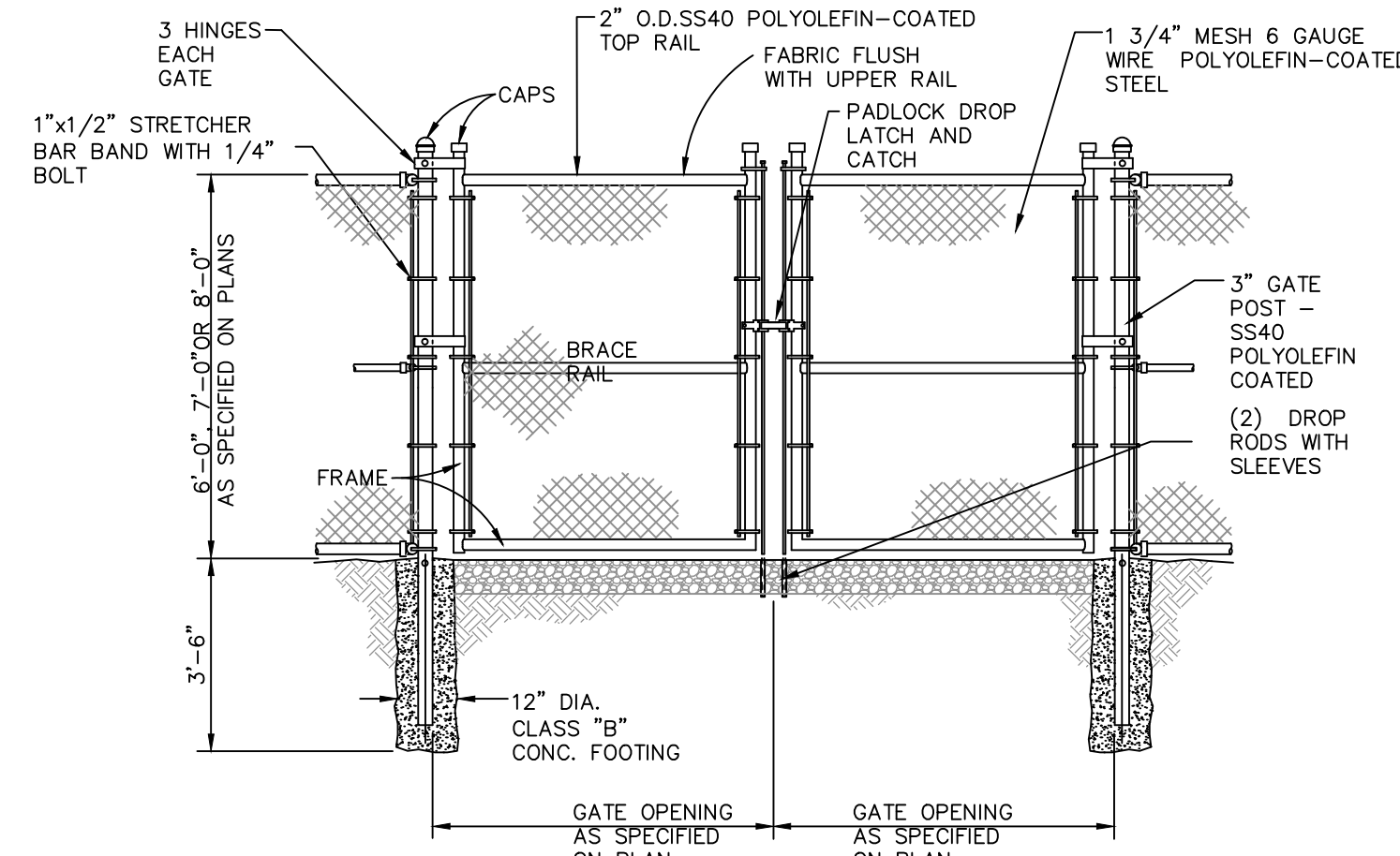
Site Plan - Chain Link Fence Installation & Repairs
Seven Presidents Park
Ocean Avenue, Long Branch, NJ

MONMOUTH COUNTY PARK SYSTEM
 BOARD OF PARK AND RECREATION COMMISSIONERS
 805 NEWMAN SPRINGS ROAD
 LINDGROFT, NEW JERSEY 07738-1965
 PHONE (732) 842-4000 FAX (732) 842-3640

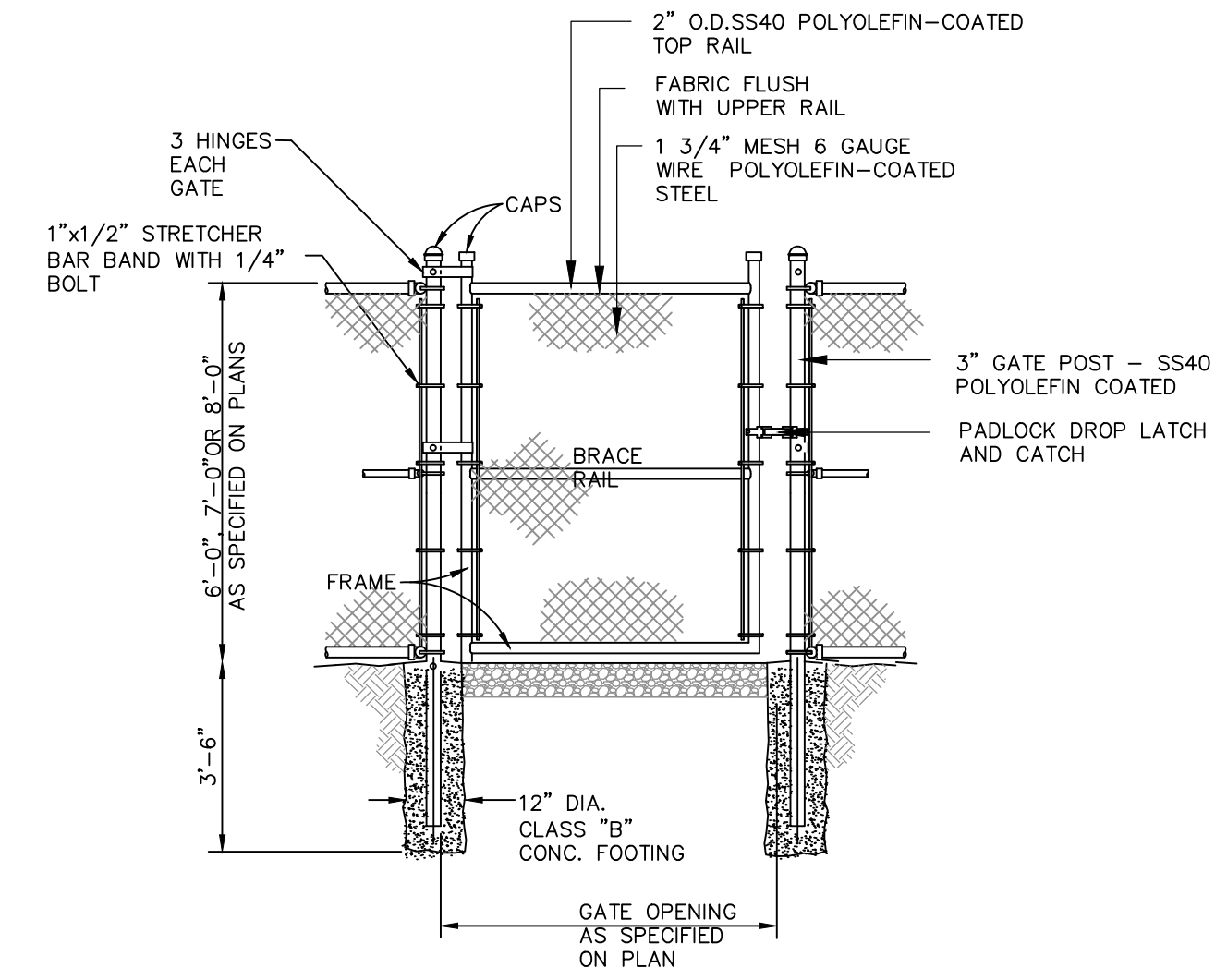




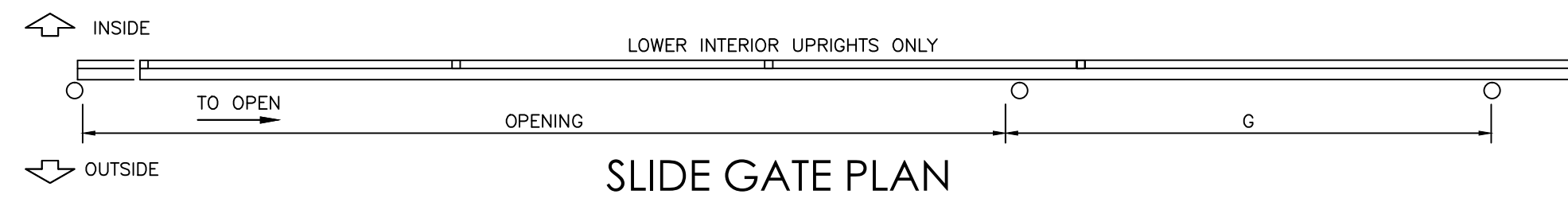
CHAIN-LINK FENCE DETAIL
N.T.S.



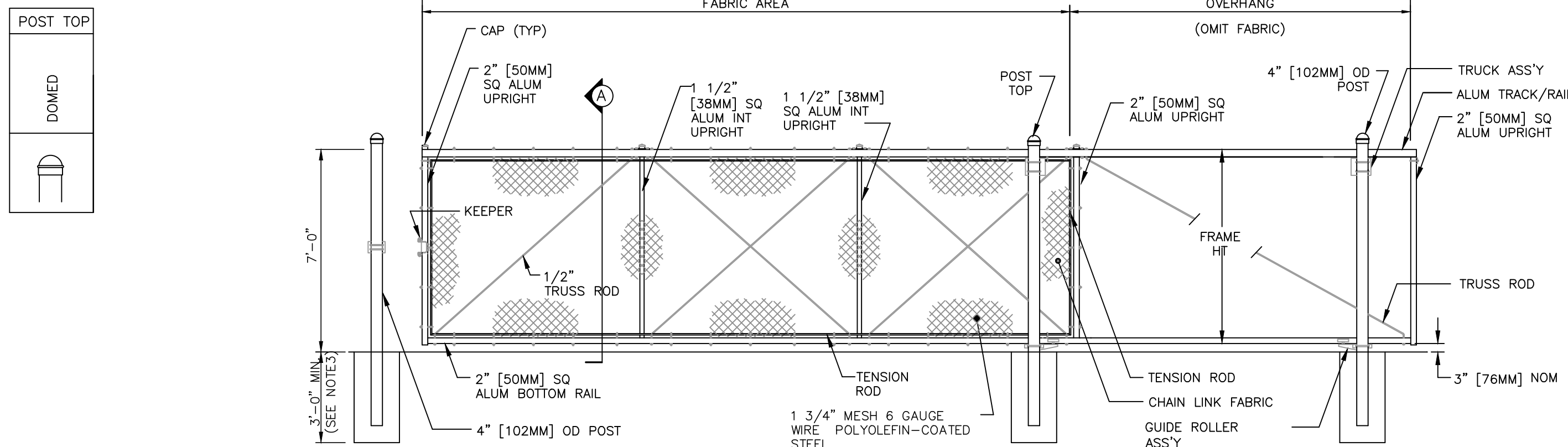
DOUBLE-LEAF SWING GATE DETAIL
N.T.S.



SINGLE-LEAF SWING GATE DETAIL
N.T.S.



SLIDE GATE PLAN

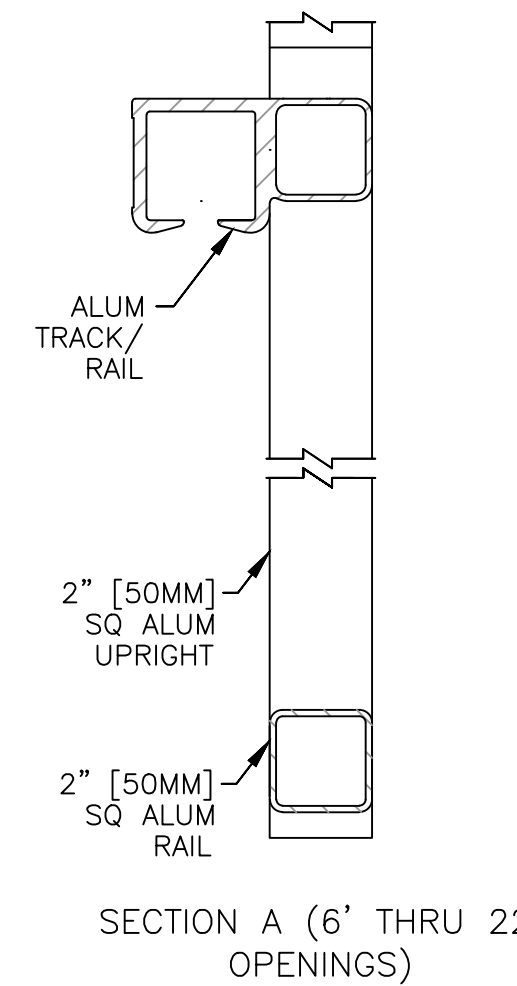


GATE ELEVATION - (3) BAYS SHOWN

NOTES:

1. METRIC DIMENSIONS ARE NOMINAL EQUIVALENTS TO U.S. DIMENSIONS.
2. FOOTING WIDTH TO BE (4)X POST WIDTH. MIN DEPTH TO BE 36" [914MM].
3. GATES WILL BE MANUALLY OPERATED.
4. POLYOLEFIN-COATED COLOR: BLACK

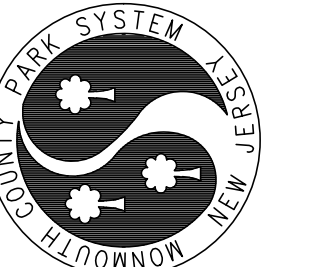
SINGLE CANTILEVERED SLIDING GATE
SQUARE POSTS
N.T.S.



NOTES:

1. FABRIC SHALL BE 1 3/4" MESH, #6 GAUGE HOT-DIPPED GALVANIZED OR ZINC COATED STEEL CORE WIRE PLUS POLYOLEFIN CLAD.
2. ALL POSTS AND RAILS SHALL BE SS40, BLACK POLYOLEFIN COATED
3. FOR GATES LARGER THAN 4'-0" SPAN INSTALL DIAGONAL BRACING WITH TURNBUCKLE.
4. UNLESS OTHERWISE PROVIDED, GATE DETAIL SHALL CONFORM TO THE REQUIREMENTS OF A.S.T.M. M-181-LATEST EDITION.
5. POLYOLEFIN-COATED COLOR: BLACK

MONMOUTH COUNTY PARK SYSTEM
BOARD OF PARK AND RECREATION COMMISSIONERS
805 NEWMAN SPRINGS ROAD
LINDROFT, NEW JERSEY 07738-1985
PHONE (732) 842-4000 FAX (732) 842-3640



Chain Link Fence Details
Chain Link Fence Installation & Repairs
Monmouth Cove Marina & Seven Presidents Park

REVISION _____ DATE _____ CHECKED BY _____

date _____ NJ Lic. No. _____

DATE 3.27.13 SCALE shown PROJECT # 133305 DRAWN RO CHECKED _____

SHEET NO. **3**
3 OF **3**