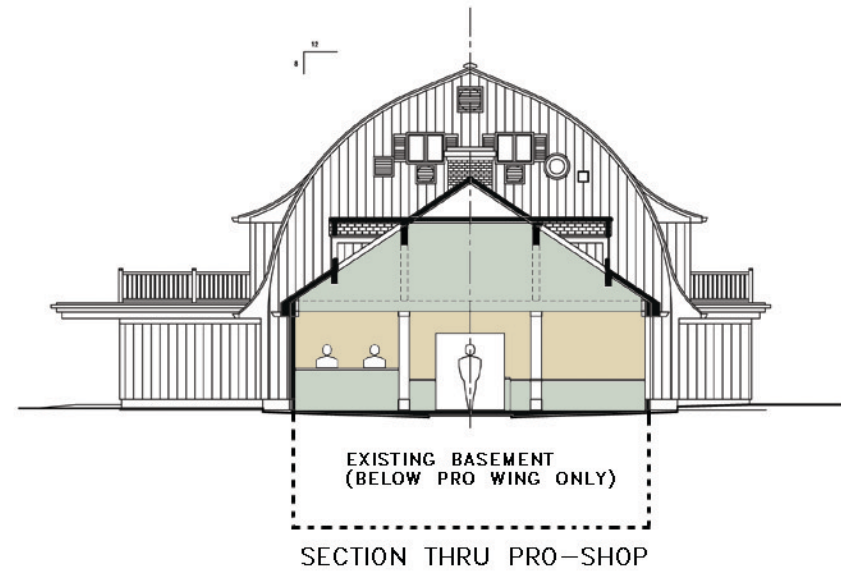
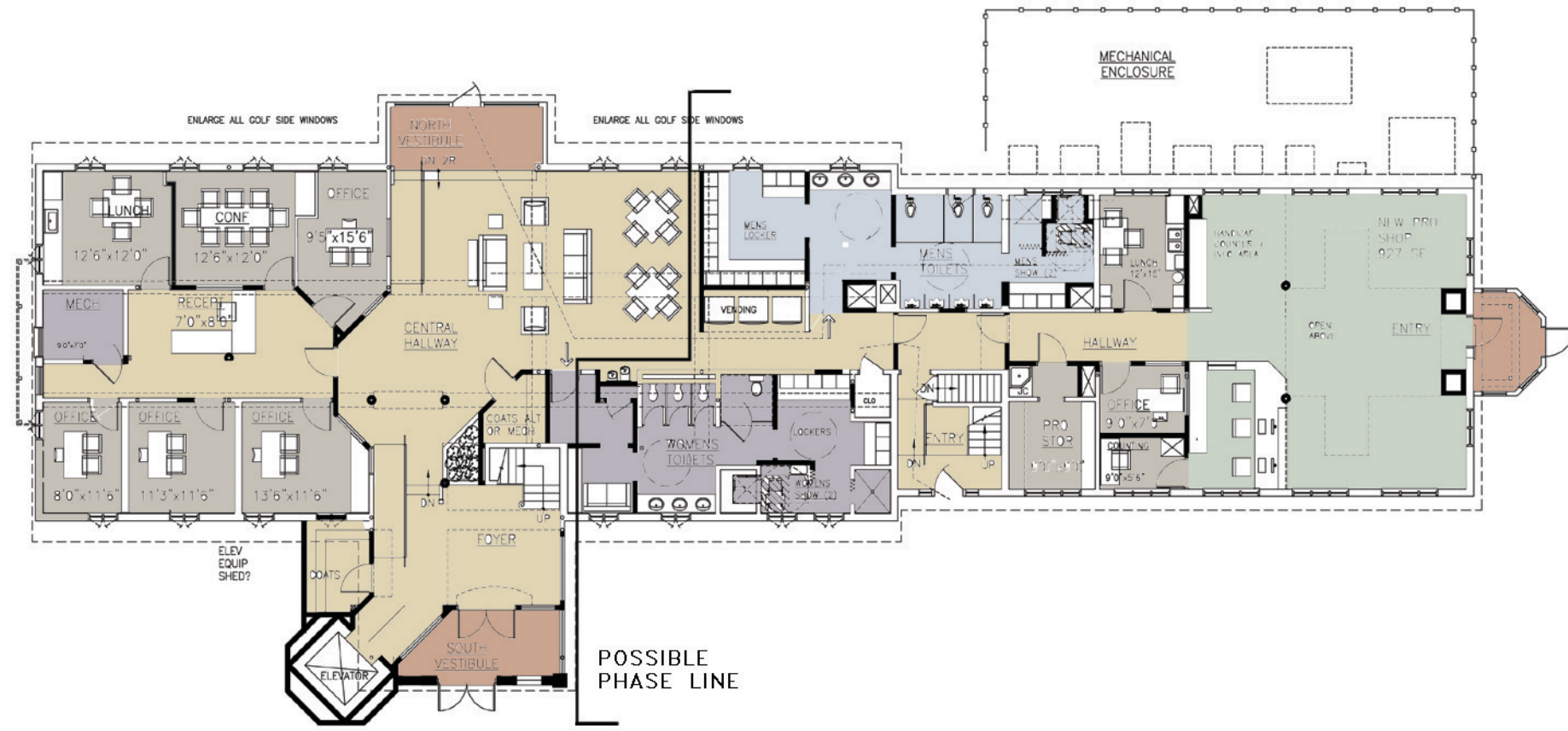


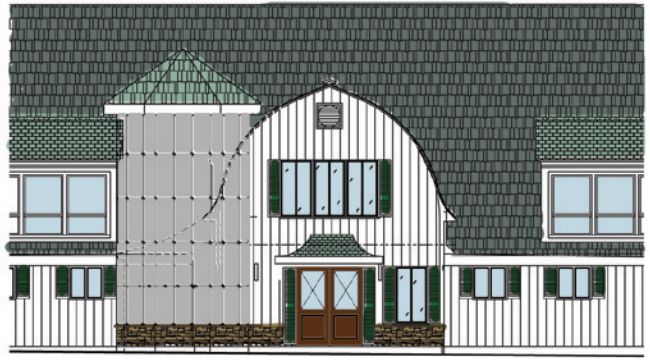
POSSIBLE PHASE LINE



SECTION THRU PRO-SHOP



POSSIBLE PHASE LINE



PROPOSED ENTRY ELEVATION

REV	DATE	BY

THESE DRAWINGS, SPECIFICATIONS AND DESIGN ARE THE PROPERTY OF THE MONMOUTH COUNTY PARK SYSTEM (MPCS). NO PART THEREOF SHALL BE COPIED OR REPRODUCED IN ANY MANNER WITHOUT THE WRITTEN CONSENT OF MPCS. MPCS MAKES NO WARRANTY, REPRESENTATION OR LIABILITY FOR PROBLEMS WHICH ARISE FROM FAILURE TO FOLLOW THESE PLANS, SPECIFICATIONS AND DESIGN INTENT. THEY CONVEY, OR FOR PROBLEMS WHICH ARISE FROM CHECKS OF FAILURE TO OBTAIN AND/OR FOLLOW THE DESIGN PROFESSIONAL'S GUIDANCE WITH RESPECT TO ANY ERRORS, OMISSIONS, INCONSISTENCIES, AMBIGUITIES OR CONFLICTS WHICH ARE ALLEGED.

MONMOUTH COUNTY PARK SYSTEM
 BOARD OF PARK AND RECREATION COMMISSIONERS
 805 NEWMAN SPRINGS ROAD
 LINCROFT, NEW JERSEY 07739-1965
 PHONE (732) 842-4000 FAX (732) 842-3540



HOMINY CLUBHOUSE
 PROPOSED PLANS AND ELEVATIONS

DATE: _____ PROJECT # _____ DRAWN: _____ CHECKED: _____

SHEET NO. _____
 OF _____