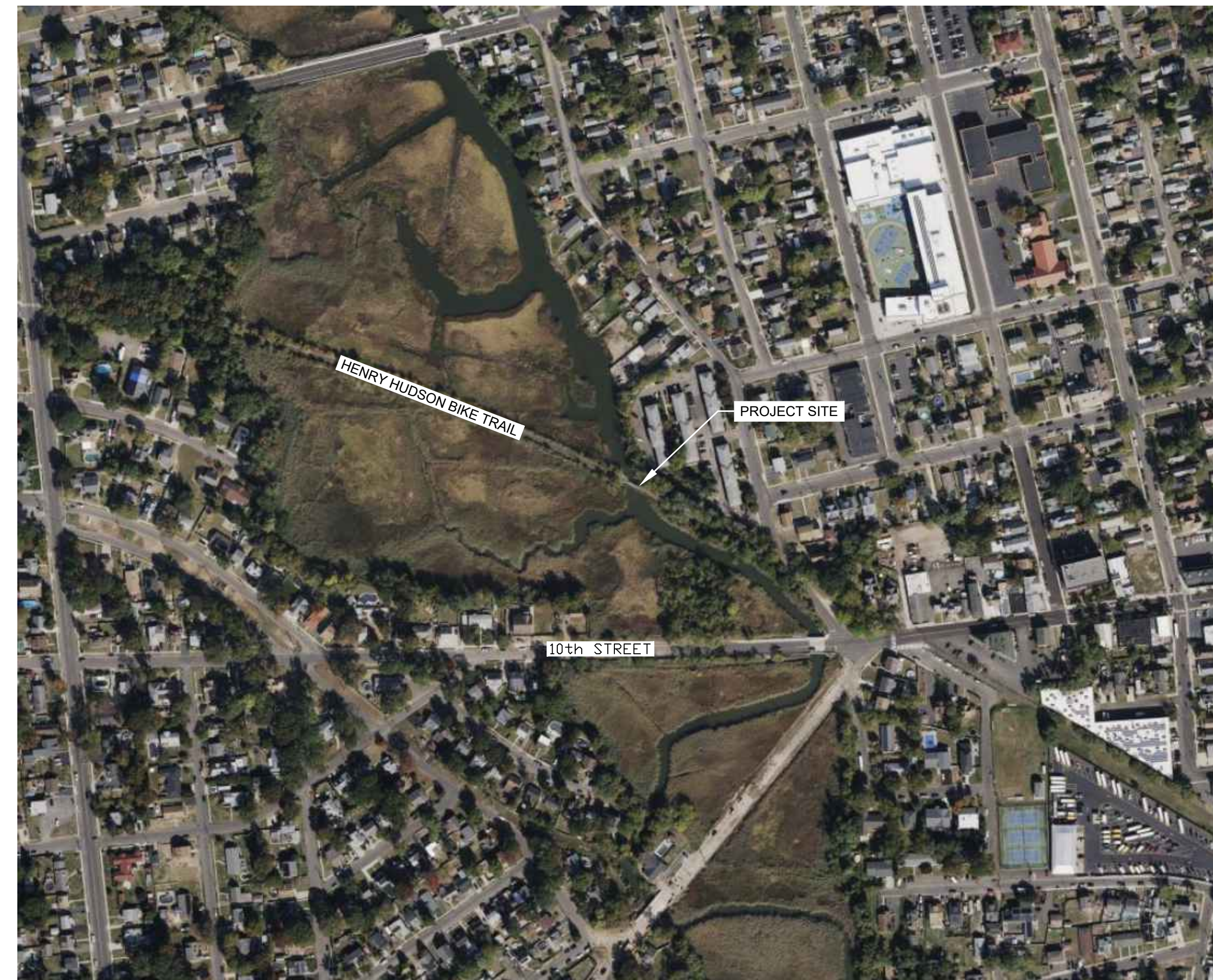


MONMOUTH COUNTY PARK SYSTEM HENRY HUDSON TRAIL WAACKAACK CREEK BRIDGE REPLACEMENT

IN THE BOROUGH OF KEANSBURG
MONMOUTH COUNTY, NEW JERSEY

AUGUST 2024



LENGTH OF PROJECT = 210 FT

PROJECT LOCATION MAP

SCALE: 1" = 250'

INDEX OF SHEETS	
SHEET NO.	DESCRIPTION
1	COVER SHEET
2	GENERAL PLAN, ELEVATION, & TYPICAL SECTION
3	GENERAL NOTES & CONDITIONS
4	DEMOLITION PLAN
5	ABUTMENT & PILE PLAN
6	STEEL SHEET PILING & DETAILS
7	MISCELLANEOUS DETAILS
8	PEDESTRIAN AND BICYCLE DETOUR PLAN
9	SOIL EROSION & SEDIMENT CONTROL PLAN - 1
10	SOIL EROSION & SEDIMENT CONTROL PLAN - 2

NEW JERSEY DEPARTMENT OF TRANSPORTATION 2019 STANDARD
SPECIFICATIONS FOR ROAD AND BRIDGE CONSTRUCTION TO GOVERN

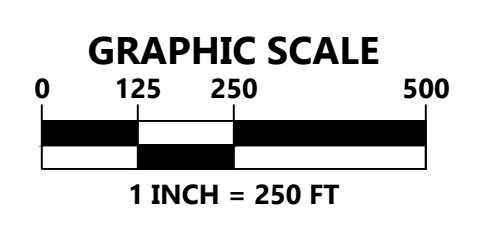


REV DESCRIPTION AUTH DATE

SERIAL NO. _____

TO LOCATE UNDERGROUND UTILITIES IF YOU'RE GOING TO DIG, BLAST OR DRILL, THERE IS WORKING DAYS NOTICE. REMEMBER IT'S THE LAW! Know what's below. Call before you dig. 1-800-277-1000

Dig Safely.



PLAN NOTATION
ONLY THOSE PLANS WHICH CONTAIN A DIGITAL, IMPRESSED, OR COLORIZED INK SEAL OF THE RESPONSIBLE PROFESSIONAL SHALL BE CONSIDERED VALID. THIS PLAN HAS BEEN SPECIFICALLY PREPARED FOR THE OWNER DESIGNATED HEREON. ANY MODIFICATION, REVISION, DUPLICATION OR USE WITHOUT THE WRITTEN CONSENT OF VAN CLEEF ENGINEERING ASSOCIATES IS PROHIBITED. RELIANCE ON THIS PLAN FOR ANY PURPOSE OTHER THAN THAT WHICH IS INTENDED SHALL BE AT THE SOLE DISCRETION AND LIABILITY OF THE APPLICABLE PARTY.

Jeffrey W. Munzing
JEFFREY W. MUNZING 8/27/2024
NJ PROFESSIONAL ENGINEER NO. 24GE04204600
VAN CLEEF ENGINEERING ASSOCIATES, LLC
3 PARAGON WAY, SUITE 600, FREEHOLD, NJ 07728
WEB: WWW.VANCLEEFENGINEERING.COM
PHONE: (732) 303 8700

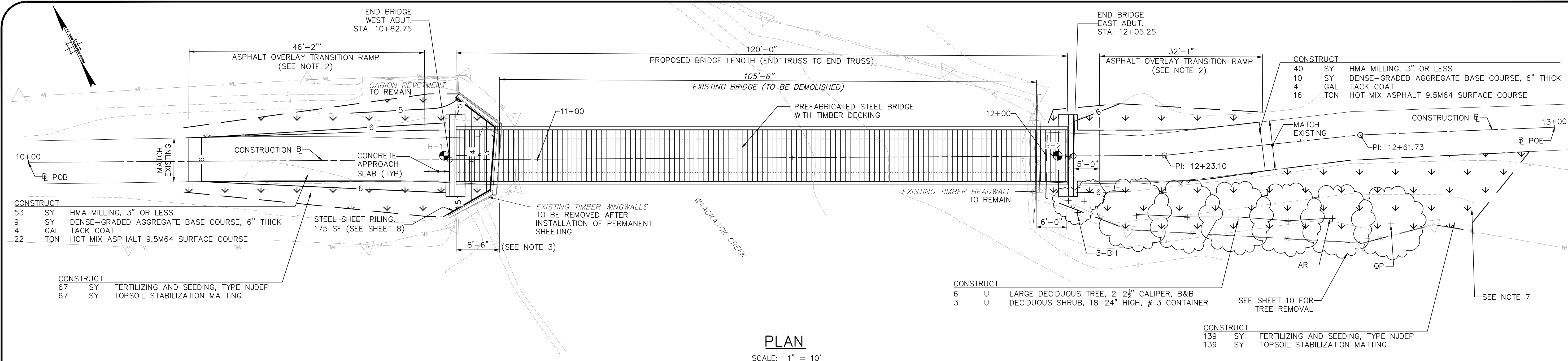
MONMOUTH COUNTY PARK SYSTEM
BOARD OF PARK AND RECREATION COMMISSIONERS
605 NEWMAN SPRINGS ROAD, SUITE 100, FREEHOLD, NJ 07728
PHONE: (732) 842-2000 FAX: (732) 842-3640

HENRY HUDSON TRAIL WAACKAACK CREEK BRIDGE REPLACEMENT

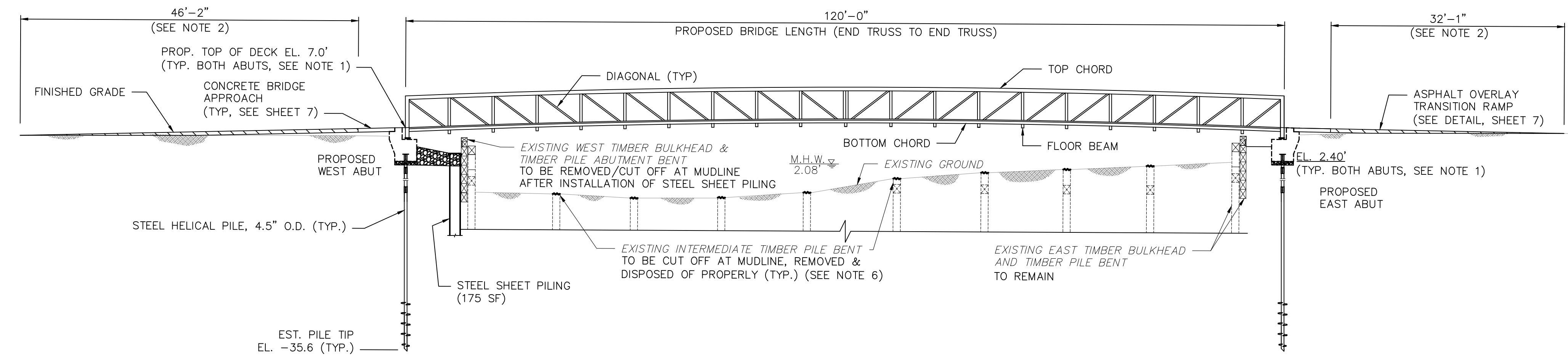
DATE: SEPTEMBER 18, 2024
SCALE: AS-SHOWN
DESIGNED BY: TF
DRAWN BY: AW
CHECKED BY: JM
JOB NUMBER: NJ-MN-KB-101

COVER SHEET
BOROUGH OF KEANSBURG
MONMOUTH COUNTY, NEW JERSEY

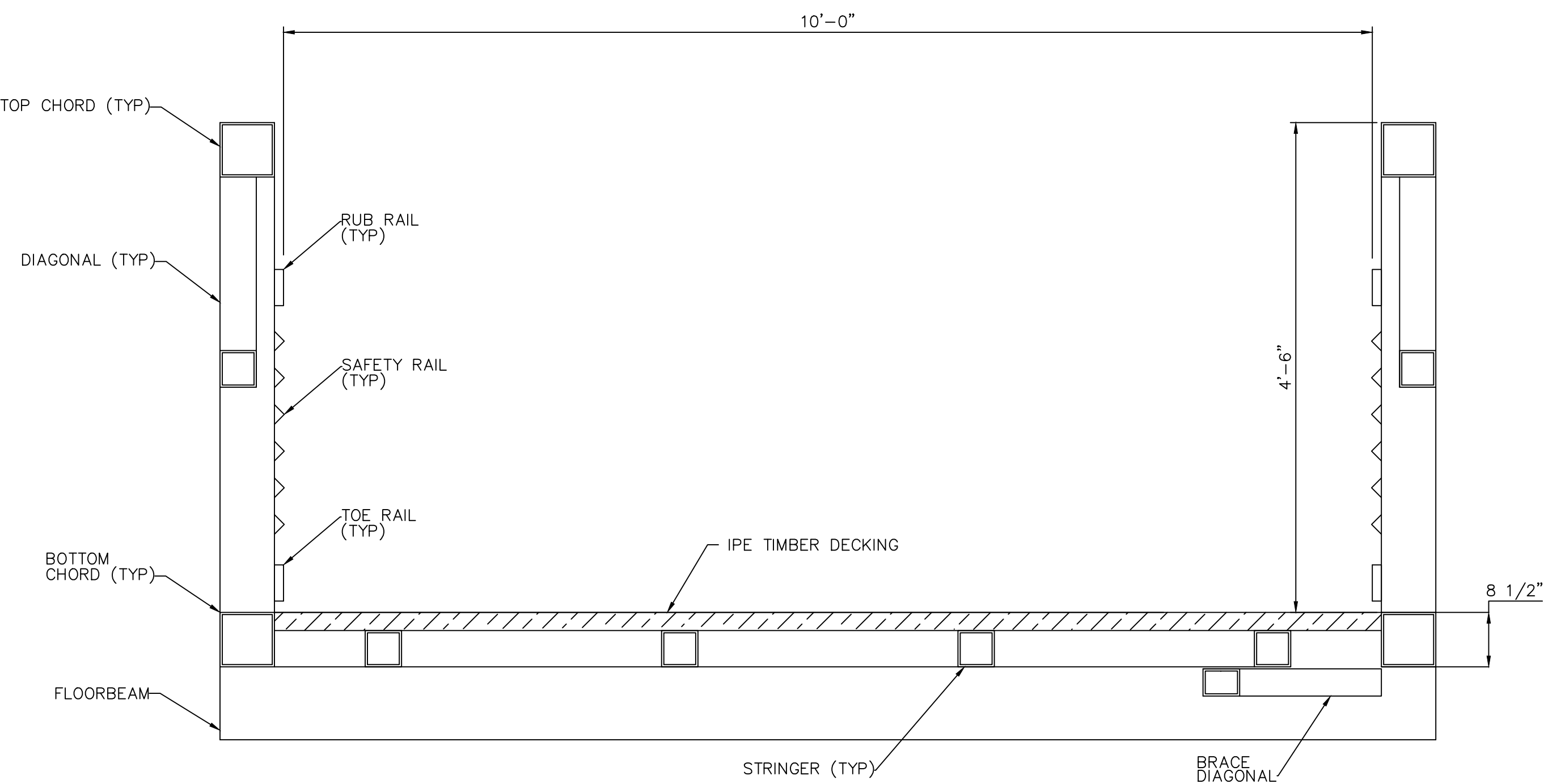
F:\Projects\10-MN-KB-101-Waackaack-Creek-Bridge-Replacement\05 - Final\Drawn\Plan\Cover Sheet.dwg 9/18/2024 11:13:05 AM



PLAN
SCALE: 1" = 10'



ELEVATION ALONG TRAIL C
SCALE: 1" = 10'



TYPICAL BRIDGE SECTION
SCALE: 1" = 1'-0"

PAY ITEM NO.	DESCRIPTION	UNIT	PLAN SHEET QUANTITY
1	MOBILIZATION	LS	1
2	PEDESTRIAN AND BICYCLE DETOUR	LS	1
3	CLEARING SITE	LS	1
4	EXCAVATION, UNCLASSIFIED	CY	67
5	DENSE-GRADED AGGREGATE BASE COURSE, 6" THICK	SY	19
6	COARSE AGGREGATE, SIZE NO. 57	CY	3
7	HOT MIX ASPHALT 9.5 M 64 SURFACE COURSE	T	38
8	HMA MILLING, 3" OR LESS	SY	93
9	TACK COAT	GAL	8
10	REINFORCEMENT STEEL, GALVANIZED	LB	1,170
11	CONCRETE ABUTMENT WALL	CY	12
12	EPOXY WATERPROOFING	SF	10
13	STEEL HELICAL PILE, 4.5" O.D.	LF	390
14	STEEL PEDESTRIAN BRIDGE (120'-0" X 10'-0")	LS	1
15	CONCRETE BRIDGE APPROACH	CY	2
16	LARGE DECIDUOUS TREE, 2-2 1/2" CALIPER, B&B	U	6
17	DECIDUOUS SHRUB, 18"-24" HIGH, #3 CONTAINER	U	3
18	SILT FENCE	LF	290
19	FERTILIZING AND SEEDING, TYPE NJDEP	SY	206
20	TOPSOIL STABILIZATION, TYPE 2 MAT	SY	206
21	STEEL SHEET PILING	SF	175
22	RIPRAP STONE SLOPE PROTECTION, 24" THICK (D50=6")	SY	4

PLANT LIST					
KEY	QTY	BOTANICAL NAME	COMMON NAME	SIZE	COND
TREE					
AR	5	ACER RUBRUM	RED MAPLE	1.75"-2"	B&B
QP	1	QUERCUS PHELLOS	WILLOW OAK	1.75"-2"	B&B
SHRUB					
BH	3	BACCHARIS HALIMIFOLIA	EASTERN BACCHARIS		#3 CONT.

CONSTRUCTION BASELINE ALIGNMENT DATA			
POINT	STATION	COORDINATES	
		NORTH	EAST
POB	10+00.00	586377.7009	593218.9130
PI	12+23.10	586278.8450	593418.9111
PI	12+61.73	586265.1918	593455.0493
POE	13+00.00	586249.4055	593489.8820

NOTES:

- FINISHED GRADE, BRIDGE SEAT, BOTTOM OF PILE CAP AND PILE TIP ELEVATIONS TO BE VERIFIED BY THE CONTRACTOR PER THE DESIGN OF THE PREFABRICATED STEEL PEDESTRIAN BRIDGE.
- ASPHALT OVERLAY RAMP LENGTH SHOWN BASED ON A TRAIL FINISHED GRADE ELEVATION OF 7.0' AT BEGIN/END TRUSS. CONTRACTOR TO ADJUST LENGTH OF RAMP AS REQUIRED IF FINISHED GRADE ELEVATION VARIES FROM THAT SHOWN.
- END OF PROPOSED TRUSS AT THE WEST END TO BE LOCATED APPROXIMATELY 8'-6" LANDWARD OF THE END OF EXISTING STRUCTURE AND AT THE EAST END TO BE LOCATED APPROXIMATELY 6'-0" LANDWARD OF THE END OF THE EXISTING STRUCTURE. LOCATIONS SHALL BE VERIFIED BY THE CONTRACTOR PER THE DESIGN OF THE PREFABRICATED STEEL PEDESTRIAN BRIDGE.
- PROVIDE TIMBER BLOCKING ALONG EACH EDGE OF ASPHALT TRANSITION OVERLAY RAMPS WHERE THICKNESS OF RAMP EXCEEDS 4" OR AS DIRECTED BY ENGINEER. TIMBER BLOCKING TO REMAIN IN PLACE AFTER PLACEMENT OF ASPHALT TRANSITION OVERLAY RAMP. TIMBER BLOCKING AND ALL WORK REQUIRED TO INSTALL BLOCKING ARE INCIDENTAL TO ITEM "HOT MIX ASPHALT 9.5M64 SURFACE COURSE".
- EXISTING BOLLARD AT EACH END OF THE EXISTING BRIDGE TO BE REMOVED AND DISPOSED OF PROPERLY. REMOVAL OF EXISTING BOLLARDS INCIDENTAL TO "CLEARING SITE".
- CROSS SECTION AND MEMBER ARRANGEMENT OF THE BRIDGE IS SCHEMATIC AND MAY VARY WITH THE CONTRACTOR'S CHOSEN FABRICATOR. HOWEVER, THE DIMENSIONS SHOWN SHALL BE MAINTAINED.
- TREE REMOVAL AT THE SOUTHEAST CORNER IS FOR THE EXPRESS PURPOSE OF CREATING A CONSTRUCTION STAGING AREA. IF TREE REMOVAL IS NOT NECESSARY FOR CONTRACTOR TO CREATE AN ADEQUATE STAGING AREA THEN TREES ARE NOT TO BE REMOVED. ALL ACCESS AND CONSTRUCTION STAGING TO BE LIMITED TO THE PAVED TRAIL AND THE DESIGNATED AREA AT THE SOUTHEAST CORNER UNLESS OTHERWISE APPROVED.

LEGEND:

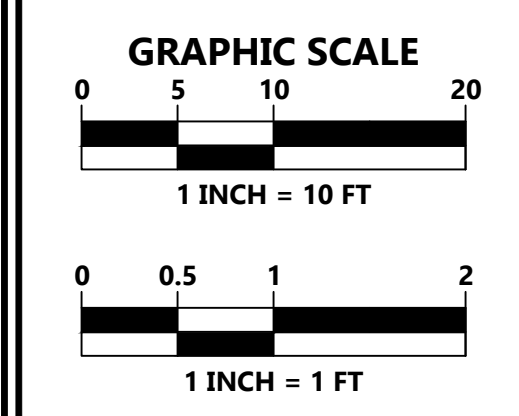
- M.H.W. = MEAN HIGH WATER ELEVATION
- ⊙ = BORING LOCATION
- - - = EXISTING GROUND CONTOUR
- — — = PROPOSED GROUND CONTOUR

REV	DESCRIPTION	AUTH	DATE

SERIAL NO.

TO LOCATE UNDERGROUND UTILITIES IF YOU'RE GOING TO DIG, BLAST OR DRILL, THREE (3) WORKING DAYS NOTICE. REMEMBER IT'S THE LAW! Call before you dig. 1-800-277-1000

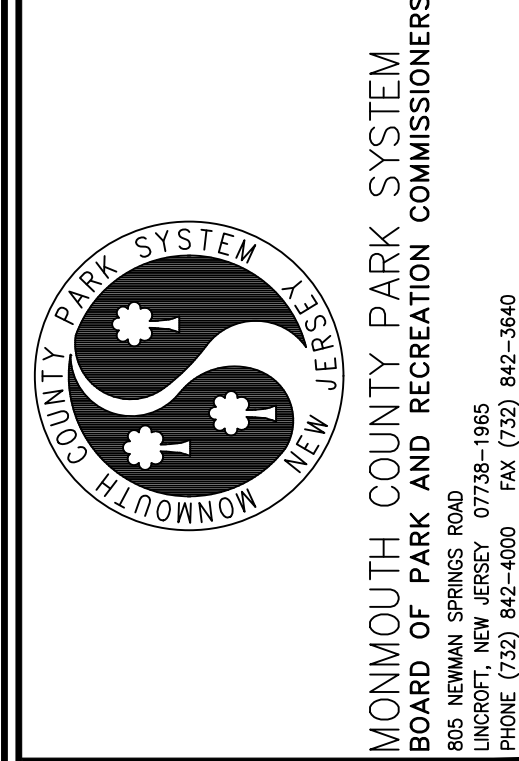
Dig Safely.



PLAN NOTATION
ONLY THOSE PLANS WHICH CONTAIN A DIGITAL, IMPRESSED, OR COLORIZED INK SEAL OF THE RESPONSIBLE PROFESSIONAL ENGINEER SHALL BE CONSIDERED VALID. THIS PLAN HAS BEEN SPECIFICALLY PREPARED FOR THE OWNER DESIGNATED HEREON. ANY MODIFICATION, REVISION, DUPLICATION OR USE WITHOUT THE WRITTEN CONSENT OF VAN CLEEF ENGINEERING ASSOCIATES IS PROHIBITED. RELIANCE ON THIS PLAN FOR ANY PURPOSE OTHER THAN THAT WHICH IS INTENDED SHALL BE AT THE SOLE DISCRETION AND LIABILITY OF THE APPLICABLE PARTY.



Jeffrey W. Munzing 8/27/2024
NJ PROFESSIONAL ENGINEER NO. 24GE04204600
VAN CLEEF ENGINEERING ASSOCIATES, LLC
3 PARAGON WAY, SUITE 600, FREEHOLD, NJ 07728
WEB: WWW.VANCLEEFENGINEERING.COM
PHONE (732) 303 8700



HENRY HUDSON TRAIL WAACKAACK CREEK BRIDGE REPLACEMENT

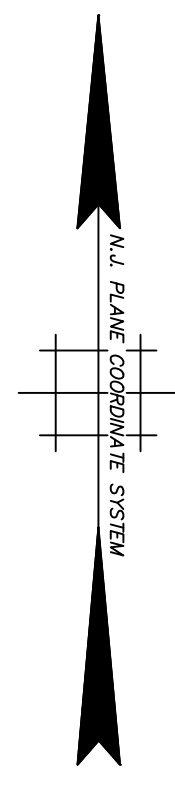
DATE: SEPTEMBER 18, 2024
SCALE: AS-SHOWN
DESIGNED BY: TF
DRAWN BY: AW
CHECKED BY: JM
JOB NUMBER: NJ-MN-KB-101

GENERAL PLAN, ELEVATION & TYPICAL SECTION

BOROUGH OF KEANSBURG
MONMOUTH COUNTY, NEW JERSEY

LEGEND:

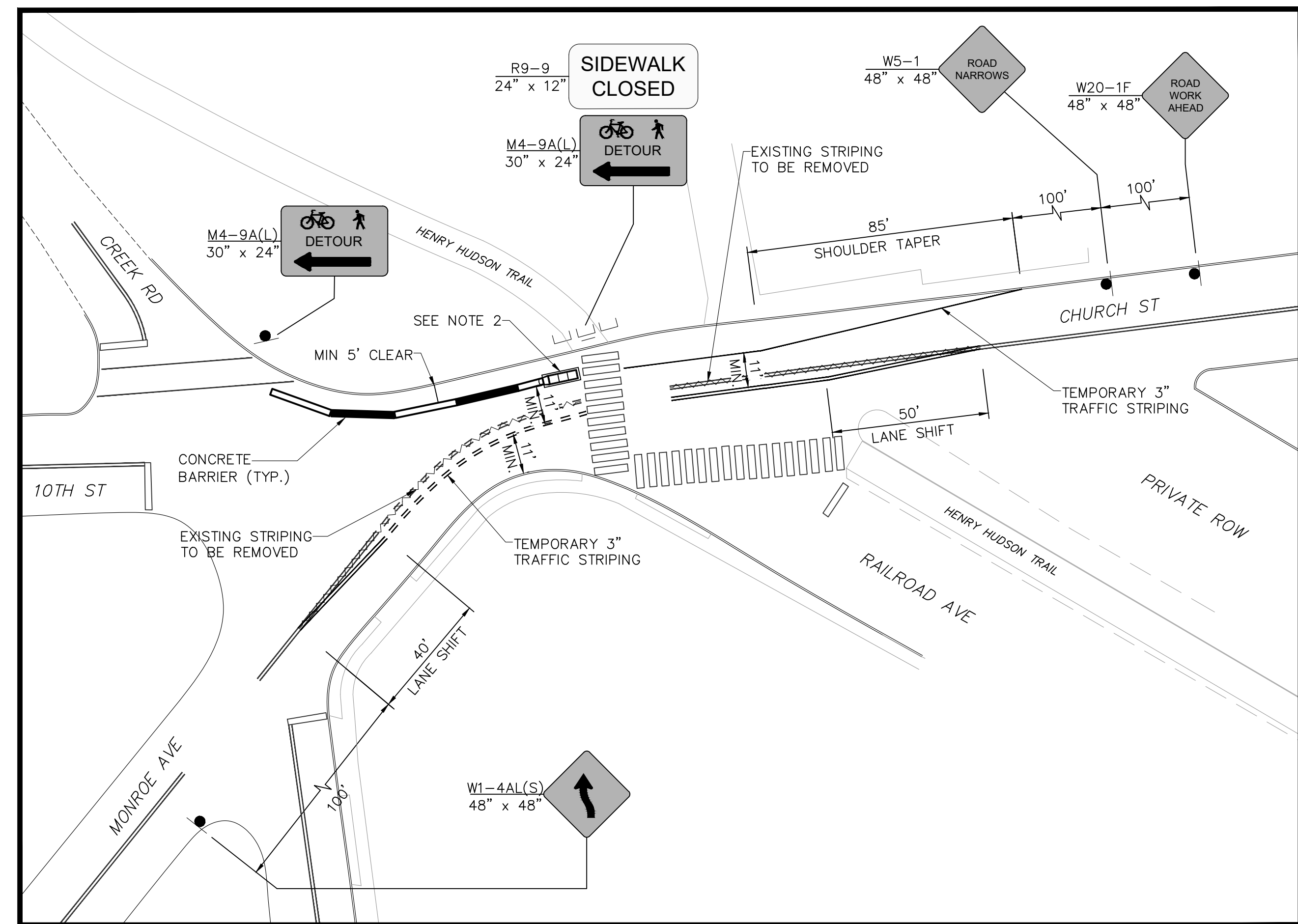
	PRECAST CONCRETE CONSTRUCTION BARRIER
	SIGN, TEMPORARY
	CRASH CUSHION
	TYPE III BARRICADE
	TYPE III BARRICADE, WITH SIGN
	DETOUR ROUTE



PEDESTRIAN AND BICYCLE DETOUR PLAN

SCALE: 1" = 100'

- NOTES:**
- INSTALL SIGN A ONE MONTH PRIOR TO ANTICIPATED START DATE AND REMOVE AFTER WORK COMMENCES.
 - CRASH CUSHION, COMPRESSIVE BARRIER, TYPE 2, NARROW (24") WIDTH SHALL BE INSTALLED IN ACCORDANCE WITH SECTION 611 OF NJDOT STANDARD SPECIFICATIONS.



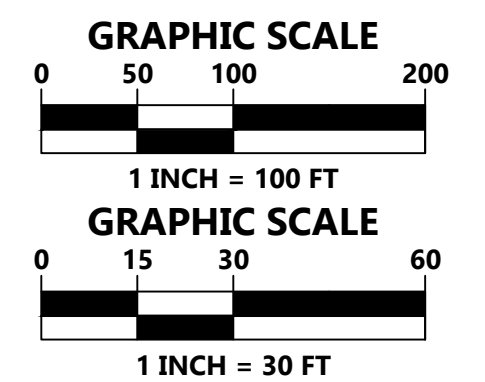
DETOUR INSET

SCALE: 1" = 30'

REV	DESCRIPTION	AUTH	DATE

811
Know what's below.
Call before you dig.
1-800-277-1000

Dig Safely



PLAN NOTATION
ONLY THOSE PLANS WHICH CONTAIN A DIGITAL IMPRESSED, OR COLORIZED INK SEAL OF THE RESPONSIBLE PROFESSIONAL SHALL BE CONSIDERED VALID. THIS PLAN HAS BEEN SPECIFICALLY PREPARED FOR THE OWNER DESIGNATED HEREON. ANY MODIFICATION, REVISION, DUPLICATION OR USE WITHOUT THE WRITTEN CONSENT OF VAN CLEEF ENGINEERING ASSOCIATES IS PROHIBITED. RELIANCE ON THIS PLAN FOR ANY PURPOSE OTHER THAN THAT WHICH IS INTENDED SHALL BE AT THE SOLE DISCRETION AND LIABILITY OF THE APPLICABLE PARTY.

STATE OF NEW JERSEY
No. 24GE04204600
PROFESSIONAL ENGINEER

Jeffrey W. Munzing
JEFFREY W. MUNZING 8/27/2024
NJ PROFESSIONAL ENGINEER NO. 24GE039490

VAN CLEEF ENGINEERING ASSOCIATES, LLC
3 PARAGON WAY, SUITE 600, FRENCHTOWN, NJ 07728
WEB: WWW.VANCLEEFENGINEERING.COM
PHONE: (732) 303 8700

MONMOUTH COUNTY PARK SYSTEM
BOARD OF PARK AND RECREATION COMMISSIONERS

MONMOUTH COUNTY PARK SYSTEM
805 NEWMAN SPRINGS ROAD, SUITE 100
FRENCHTOWN, NJ 07728
PHONE: (732) 842-2000, FAX: (732) 842-3640

**HENRY HUDSON TRAIL
WAACKAACK CREEK BRIDGE
REPLACEMENT**

DATE:	SEPTEMBER 18, 2024
SCALE:	1" = 100'
DESIGNED BY:	TF
DRAWN BY:	AW
CHECKED BY:	JM
JOB NUMBER:	NJ-MN-KB-101

**PEDESTRIAN AND BICYCLE
DETOUR PLAN**

BOROUGH OF KEANSBURG
MONMOUTH COUNTY, NEW JERSEY