



MONMOUTH COUNTY PARK SYSTEM
 BOARD OF PARK AND RECREATION COMMISSIONERS
 805 NEWMAN SPRINGS ROAD
 LINCROFT, NEW JERSEY 07738-1985
 PHONE (732) 842-4000 FAX (732) 842-3640

PROJECT # 244236
 CHECKED : SMM
 DRAWN : SMM
 DATE 9/27/2024

REVISION	DATE
1	
2	
3	

NOTE: UNLESS PROVIDED FULL SIZE, THESE DIMENSIONS WILL NOT BE TO SCALE. THESE DIMENSIONS, SPECIFICATIONS AND DESIGNS ARE THE PROPERTY OF THE MONMOUTH COUNTY PARK SYSTEM (MPCS). NO PART THEREOF SHALL BE COPIED OR USED IN CONNECTION WITH ANY OTHER WORK OTHER THAN THE SPECIFIC PROJECT FOR WHICH THEY HAVE BEEN DEVELOPED WITHOUT THE WRITTEN CONSENT OF MPCS. MPCS WAIVES ANY AND ALL RESPONSIBILITY AND LIABILITY FOR PROBLEMS WHICH ARISE FROM FAILURE TO FOLLOW THESE PLANS, SPECIFICATIONS AND DESIGN INTENT THEY COMEY, OR FOR PROBLEMS WHICH ARISE FROM OTHERS' FAILURE TO OBTAIN AND/OR FOLLOW THE DESIGN PROFESSIONAL'S GUIDANCE WITH RESPECT TO ANY ERRORS, OMISSIONS, INCONSISTENCIES, AMBIGUITIES OR CONFLICTS WHICH ARE ALLEGED.

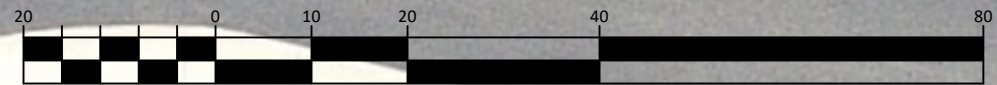
**ASPHALT PAVING AND CONCRETE IMPROVEMENTS
 AT BIG BROOK PARK, MARLBORO AND
 FORT MONMOUTH RECREATION CENTER,
 TINTON FALLS, NJ**

TITLE:
 SHEET NO.:
 1 OF 3



BIG BROOK PARK
 521 COUNTY ROUTE 520
 MARLBORO, NJ 07746

GRAPHIC SCALE



SCALE: 1"=20'



MONMOUTH COUNTY PARK SYSTEM
 BOARD OF PARK AND RECREATION COMMISSIONERS
 805 NEWMAN SPRINGS ROAD
 LINCROFT, NEW JERSEY 07738-1985
 PHONE (732) 842-4000 FAX (732) 842-3640

PROJECT # 245337
 CHECKED : SMM
 DRAWN : SMM
 DATE 9/27/2024

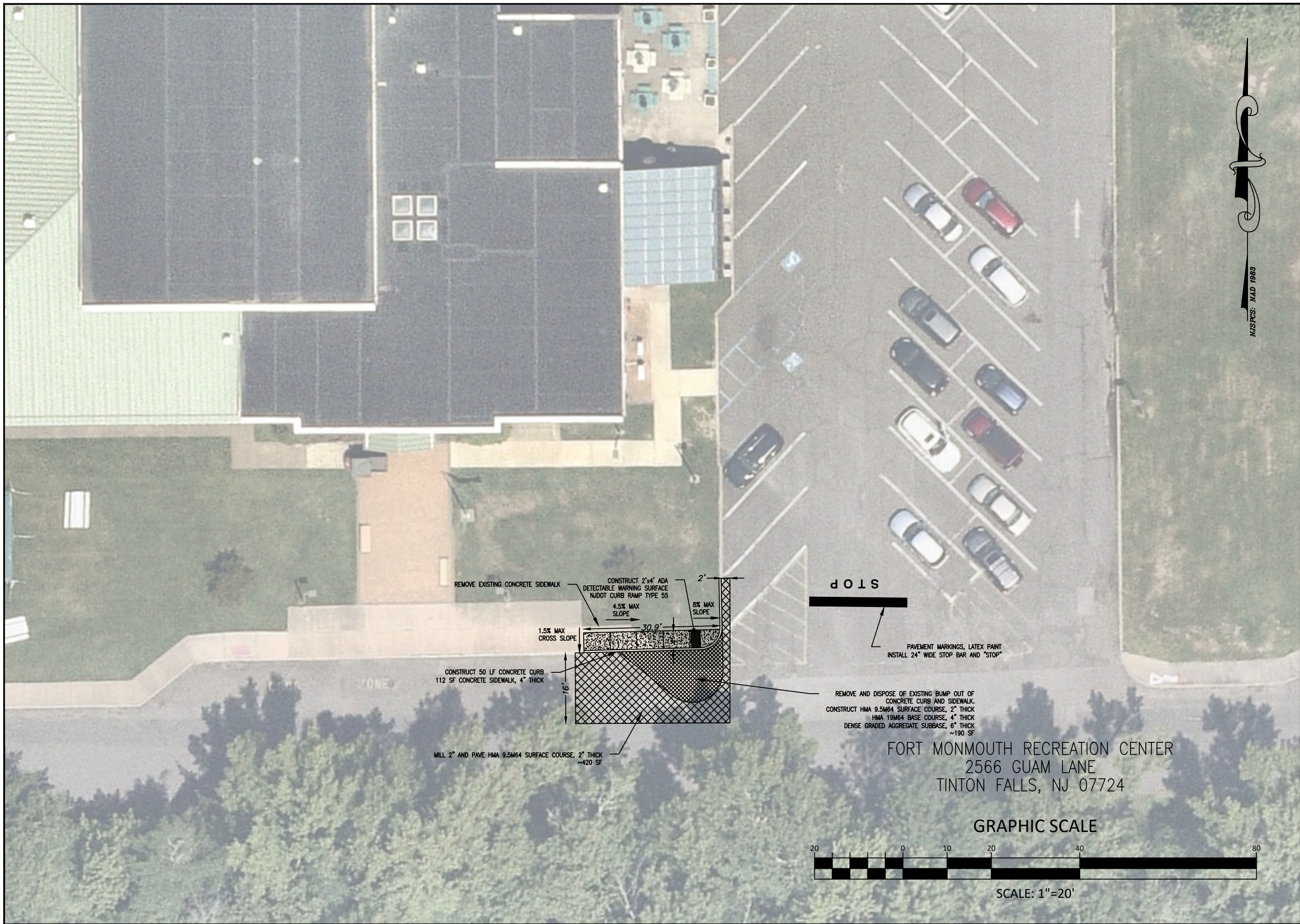
REVISION	DATE
1	
2	
3	

NOTE: UNLESS PROVIDED FULL SIZE, THESE DIMENSIONS WILL NOT BE TO SCALE. THESE DIMENSIONS, SPECIFICATIONS AND DESIGNS ARE THE PROPERTY OF THE MONMOUTH COUNTY PARK SYSTEM (MPCS). NO PART THEREOF SHALL BE COPIED OR USED IN ANY OTHER WORK OTHER THAN THE SPECIFIC PROJECT FOR WHICH THEY HAVE BEEN DEVELOPED WITHOUT THE WRITTEN CONSENT OF MPCS. MPCS WAIVES ANY AND ALL RESPONSIBILITY AND LIABILITY FOR PROBLEMS WHICH ARISE FROM FAILURE TO FOLLOW THESE PLANS, SPECIFICATIONS AND DESIGN INTENT THEY COMEY, OR FOR PROBLEMS WHICH ARISE FROM OTHERS' FAILURE TO OBTAIN AND/OR FOLLOW THE DESIGN PROFESSIONAL'S GUIDANCE, WITH RESPECT TO ANY ERRORS, OMISSIONS, INCONSISTENCIES, AMBIGUITIES OR CONFLICTS WHICH ARE ALLEGED.

**ASPHALT PAVING AND CONCRETE IMPROVEMENTS
 AT BIG BROOK PARK, MARLBORO AND
 FORT MONMOUTH RECREATION CENTER,
 TINTON FALLS, NJ**

SHEET NO.:
 2 OF 3

NAD 1983

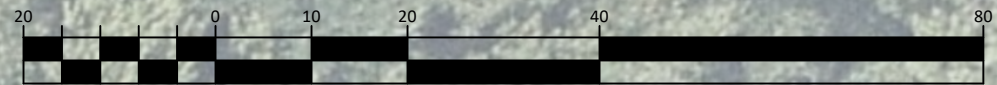


STOP
 PAVEMENT MARKINGS, LATEX PAINT
 INSTALL 24" WIDE STOP BAR AND "STOP"

REMOVE AND DISPOSE OF EXISTING BUMP OUT OF CONCRETE CURB AND SIDEWALK.
 CONSTRUCT HMA 9.5M64 SURFACE COURSE, 2" THICK
 HMA 19M64 BASE COURSE, 4" THICK
 DENSE GRADED AGGREGATE SUBBASE, 6" THICK
 ~190 SF

FORT MONMOUTH RECREATION CENTER
 2566 GUAM LANE
 TINTON FALLS, NJ 07724

GRAPHIC SCALE



SCALE: 1"=20'



MONMOUTH COUNTY PARK SYSTEM
 BOARD OF PARK AND RECREATION COMMISSIONERS
 805 NEWMAN SPRINGS ROAD
 LINCROFT, NEW JERSEY 07738-1985
 PHONE (732) 842-4000 FAX (732) 842-3640

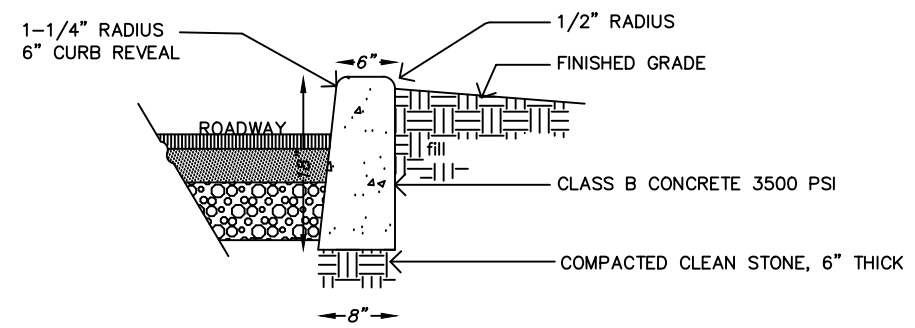
PROJECT # 244236
 CHECKED : SMM
 DRAWN : SMM
 DATE 9/27/2024

REVISION	DATE
1	
2	
3	

NOTE:
 UNLESS PROVIDED FULL SIZE, THESE DIMENSIONS WILL NOT BE TO SCALE. THESE DIMENSIONS, SPECIFICATIONS AND DESIGNS ARE THE PROPERTY OF THE MONMOUTH COUNTY PARK SYSTEM (MPCS). NO PART THEREOF SHALL BE COPIED OR USED IN ANY OTHER WORK OTHER THAN THE SPECIFIC PROJECT FOR WHICH THEY HAVE BEEN DEVELOPED WITHOUT THE WRITTEN CONSENT OF MPCS. MPCS WAIVES ANY AND ALL RESPONSIBILITY AND LIABILITY FOR PROBLEMS WHICH ARISE FROM FAILURE TO FOLLOW THESE PLANS, SPECIFICATIONS AND DESIGN INTENT THEY COMEY, OR FOR PROBLEMS WHICH ARISE FROM OTHERS' FAILURE TO OBTAIN AND/OR FOLLOW THE DESIGN PROFESSIONAL'S GUIDANCE WITH RESPECT TO ANY ERRORS, OMISSIONS, INCONSISTENCIES, AMBIGUITIES OR CONFLICTS WHICH ARE ALLEGED.

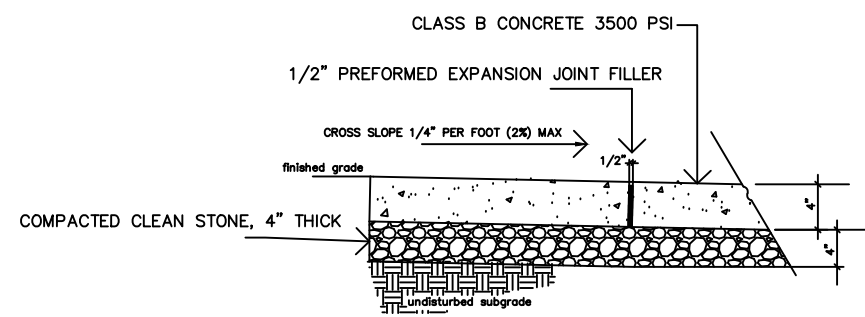
ASPHALT PAVING AND CONCRETE IMPROVEMENTS
 AT BIG BROOK PARK, MARLBORO AND
 FORT MONMOUTH RECREATION CENTER,
 TINTON FALLS, NJ

SHEET NO.:
 3 OF 3

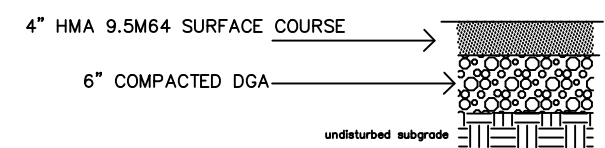


Notes:
 Transverse joints 1/2" wide shall be installed in the curb 20'-0" apart and shall be filled with preformed, bituminous-impregnated fiber joint filler, complying with the requirements of AASHTO spec. M-213, recessed 1/4" from front face and top of curb.

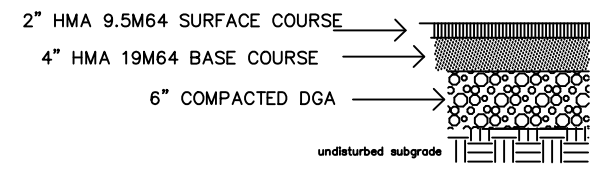
1 Concrete Curb Detail
 3 NOT TO SCALE



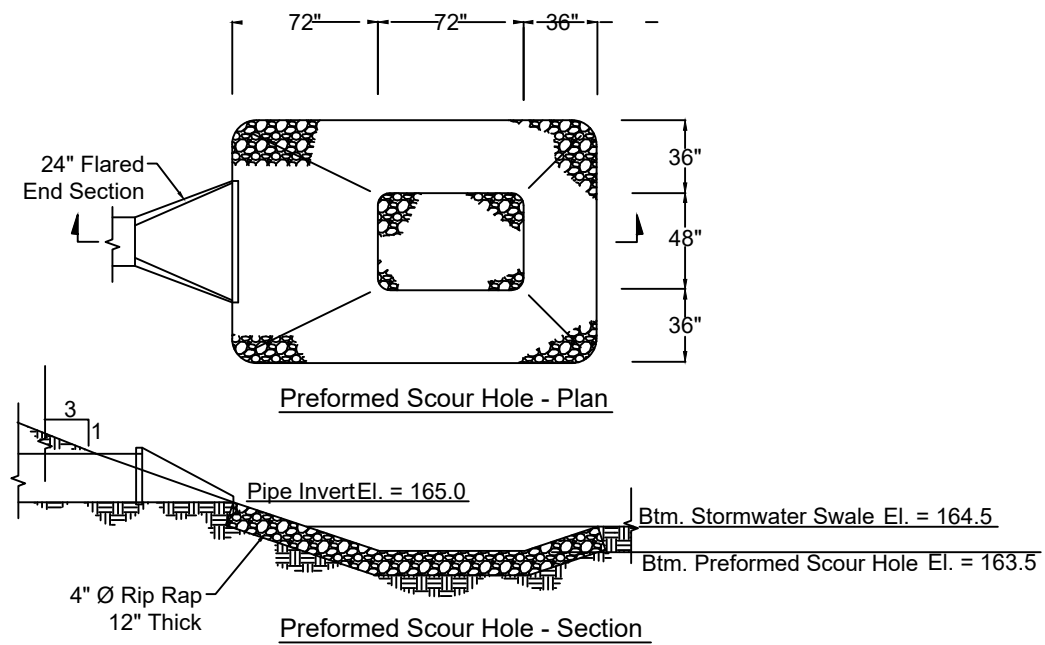
2 Concrete Sidewalk, 4" Thick
 3 NOT TO SCALE



3 Pavement Detail, Big Brook Park
 3 NOT TO SCALE



4 Pavement Detail, Fort Monmouth Rec Center
 3 NOT TO SCALE



5 Preformed Scour Hole (Existing)
 3 NOT TO SCALE

DETAIL SHEET