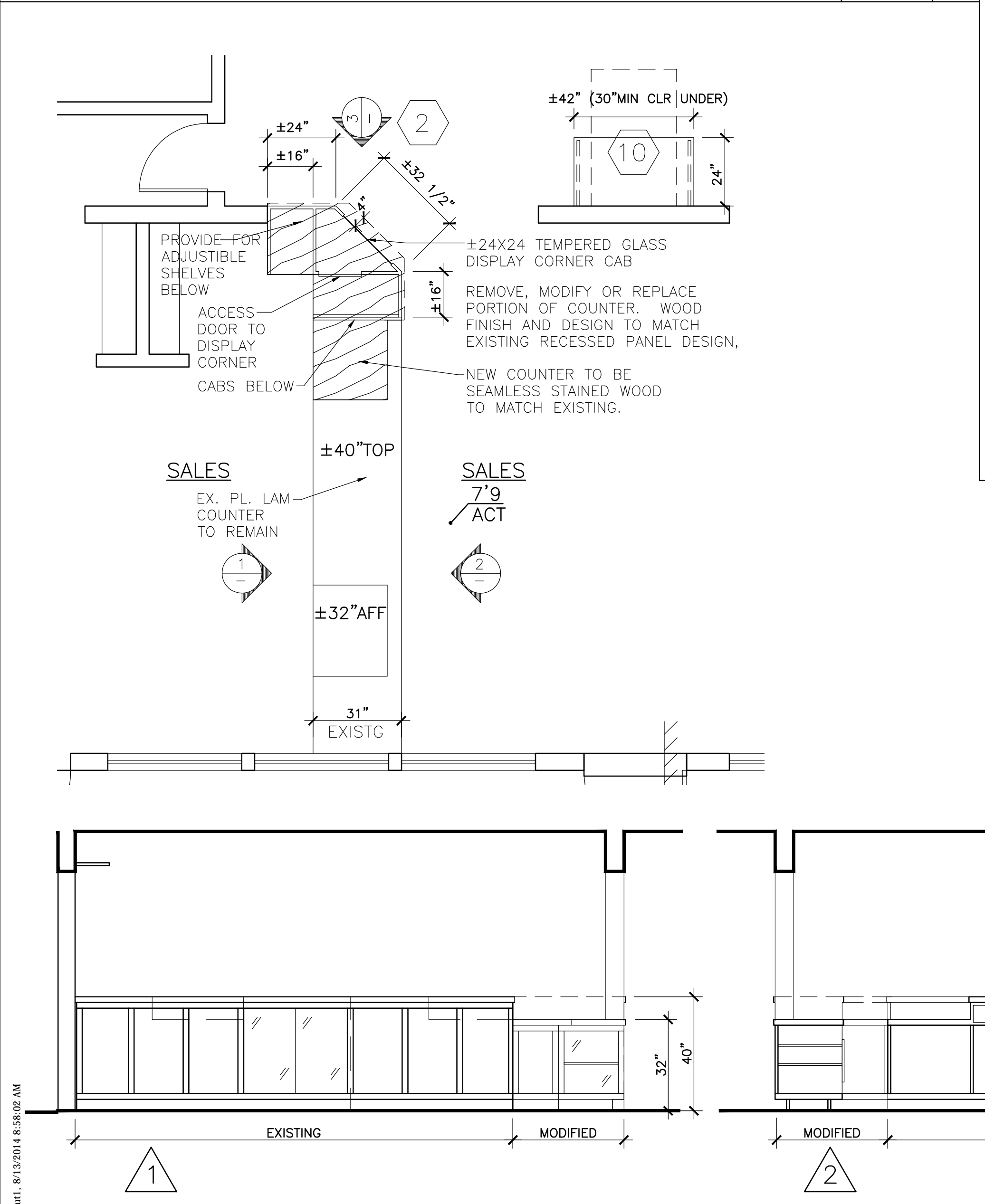
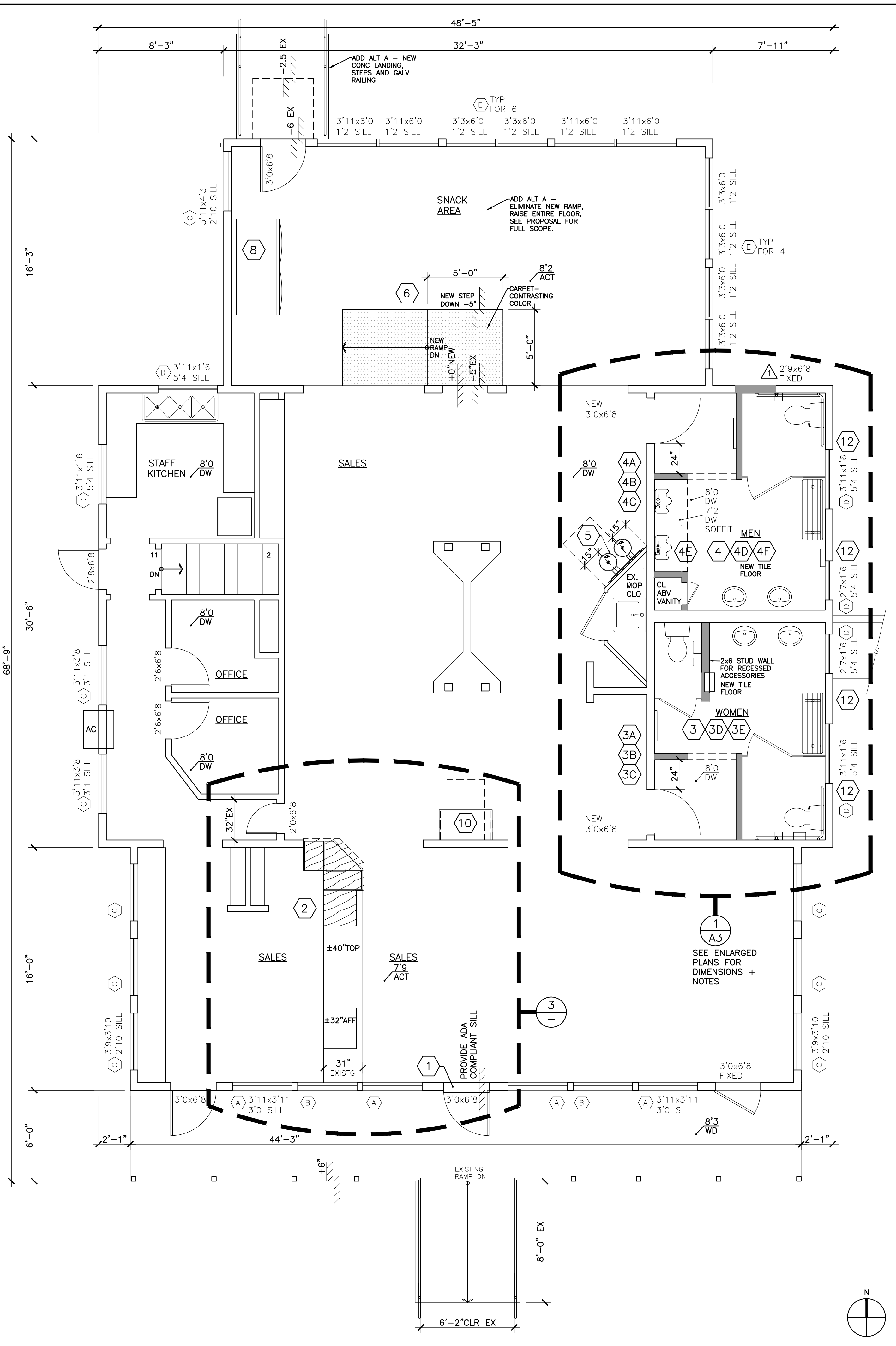


DEMO PLANS AND NOTES 1/8"=1'-0" 2



COUNTER MODIFICATION 3/8"=1'-0" 3

- ADA BUILDING NOTES — SEE ENLARGED PLAN + NOTES
- 1 REPLACE THRESHOLD WITH ADA COMPLIANT SILL TO COVER 1.5" CAULKING GAP AND HAVE A MAXIMUM ABRUPT VERTICAL LEVEL CHANGE OF 1/4 INCH WITH A MAXIMUM OVERALL RISE OF 1/2 INCH SLOPED 1:2 MAXIMUM. DARK BRONZE ANODIZED
 - 2 MODIFY THE COUNTER TO PROVIDE A PARALLEL APPROACH PORTION THAT IS 34 INCHES HIGH MAXIMUM x 36 INCHES WIDE MINIMUM COUNTER SURFACE.
 - 3 WOMENS RESTROOM
 - 3A PROVIDE ADA COMPLIANT SIGNAGE.
 - 3B WIDEN DOOR TO PROVIDE A 32 INCHES WIDE MINIMUM NET CLEAR OPENING (36" DOOR). PATCH ADJACENT WOOD WALL FINISH.
 - 3C CHANGE DOOR KNOBS TO LEVER HANDLES AND PROVIDE COMPLIANT CLOSER.
 - 3D MODIFY THE RESTROOM TO PROVIDE FULLY COMPLIANT TURNING SPACE, LAVATORY, TOILET COMPARTMENT AND CHANGING BENCH WITH COMPLIANT CLOTHES HOOKS.
 - 3E INSTALL AUDIBLE/VISUAL FIRE ALARMS IN THE RESTROOMS.
 - 4 MENS RESTROOM
 - 4A PROVIDE ADA COMPLIANT SIGNAGE.
 - 4B WIDEN DOOR TO PROVIDE A 32 INCHES WIDE MINIMUM NET CLEAR OPENING (36" DOOR). PATCH ADJACENT WOOD WALL FINISH.
 - 4C CHANGE DOOR KNOBS TO LEVER HANDLES AND PROVIDE COMPLIANT CLOSER.
 - 4D MODIFY THE RESTROOM TO PROVIDE FULLY COMPLIANT TURNING SPACE, LAVATORY, TOILET COMPARTMENT AND CHANGING BENCH WITH COMPLIANT CLOTHES HOOKS.
 - 4E PROVIDE ONE URINAL WITH 17 IN. HIGH MAX. TO THE LIP.
 - 4F INSTALL AUDIBLE/VISUAL FIRE ALARMS IN THE RESTROOMS.
 - 5 PROVIDE A HIL-LOW DRINKING FOUNTAIN w/ CANE SKIRT ON SINGLE DUAL MOUNTING FRAME. HAWS 1011 OR APPROVED EQUAL.
 - 6 CONSTRUCT WOOD AND 3/4" PLY ADA COMPLIANT LANDING, RAMP AND STEP. (1:12 MAX). NO HANDRAIL REQUIRED AT <6"RISE.
 - 7 OMIT.
 - 8 BY MCPS VENDOR — PROVIDE AT LEAST ONE OF EACH TYPE OF VENDING MACHINE WITH THE TOP CONTROL NO MORE THAN 48 INCHES AFF.
 - 9 OMIT
 - 10 PROVIDE ACCESSIBLE SHELF FOR HANDICAPPING STATION. SOLID SURFACE COUNTER. MOUNT COMPUTER CPU SHELF UNDER. PROVIDE FINISHED CABLE HOLES THRU TOP. PROVIDE MIN ADA CLEARANCES. DETAIL SIMILAR TO LAVATORY COUNTER, NO FRONT PANEL REQUIRED.
 - 11 OMIT.
 - 12 REPLACE (4) TYPE-D AWNING WINDOWS w/ ALUM CLAD WOOD DOUBLE GLAZED WINDOWS. VERIFY DIM IN FIELD.



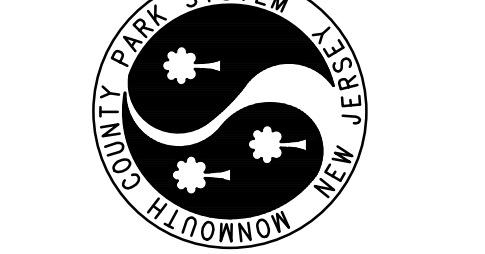
FLOOR PLAN 1/8"=1'-0" 1

REV DATE BY
 BID SET 08/01/14 GC

NOTE:
 UNLESS PRINTED FULL SIZE,
 THESE DRAWINGS WILL NOT
 BE TO SCALE.

THESE DRAWINGS, SPECIFICATIONS AND
 DESIGN ARE THE PROPERTY OF THE
 MONMOUTH COUNTY PARK SYSTEM
 (MCPS). NO PART THEREOF SHALL BE
 REPRODUCED OR USED WITH ANY OTHER
 WORK OTHER THAN THE SPECIFIC
 PROJECT FOR WHICH THEY HAVE BEEN
 DEVELOPED. WITHOUT THE WRITTEN
 CONSENT OF MCPS, MCPS MAKES NO
 WARRANTY, REPRESENTATION, OR
 ALL RESPONSIBILITY AND LIABILITY
 FOR PROBLEMS WHICH ARISE FROM
 FAILURE TO FOLLOW THESE PLANS,
 SPECIFICATIONS AND DESIGN INTENT
 THEY COMEY, OR FOR PROBLEMS
 WHICH ARISE FROM OTHERS' FAILURE
 TO OBEY AND/OR FOLLOW THE
 DESIGN PROFESSIONAL'S GUIDANCE WITH
 RESPECT TO ANY ERRORS, OMISSIONS,
 INCONSISTENCIES, AMBIGUITIES, OR
 CONFLICTS WHICH ARE ALLEGED.

MONMOUTH COUNTY PARK SYSTEM
 BOARD OF PARK AND RECREATION COMMISSIONERS
 805 NEWMAN SPRINGS ROAD
 LINCOLN, NEW JERSEY 07738-1985
 PHONE (732) 842-4000 FAX (732) 842-3640



BEL-AIRE GOLF COURSE CLUBHOUSE BLDG 3001
 INTERIOR ALTERATIONS
 PROPOSED PLAN

PROJECT # 144527
 DRAWN
 CHECKED

DATE 06/11/14 SCALE