

BOARD OF RECREATION  
COMMISSIONERS, APRIL 19, 2021

Land Preservation Services  
Land Acquisition Update



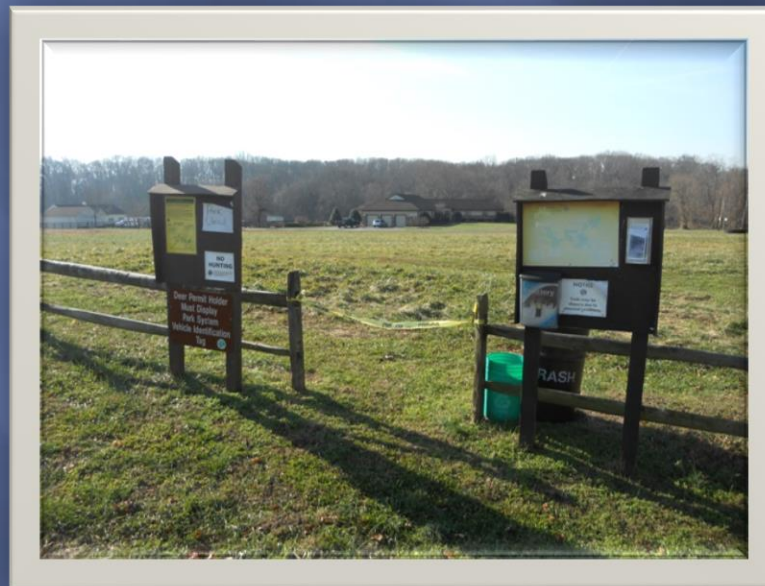
# June 19, 2017

- ▣ Last Update Presented To The Board
- ▣ Added 800 Acres To The Parks
- ▣ Cost/ Value \$31,722,471
- ▣ MOSGP, Preserved 839 Acres
- ▣ MOSGP, Cost \$10,170,418



# Current Acreage, March 26, 2021

- ❑ Easements/Cooperative Projects- 4,056 Acres
- ❑ Managed- 1,319 Acres
- ❑ Owned- 16,482 Acres
- ❑ Owned & Managed (MCPS)- 17,801 Acres
- ❑ Open Space Goal- 21,017 Acres, MCPS, 85% There!



# Total Cost/Value

- ▣ Easements/Cooperative Projects- \$37,757,572
- ▣ Owned- \$431,093,259
- ▣ Total- \$468,850,831



# Open Space Trust Fund

## Referenda:

- ▣ 1987, \$4M, 71% Approval By Electorate
- ▣ 1996, \$10M, 73% Approval
- ▣ 2002, \$16M, 73% Approval
- ▣ 2006, 1.5 cents/\$100 Equalized Valuation, 65% Approval
- ▣ 2017, 2.75 Cents/\$100 Equalized Valuation, 57% Approval
- ▣ \$37,135,418, Projected 2021 Collection
- ▣ \$8,416,428, 23%, 2021 Development & Maintenance

# Other Obligations:

- ▣ Bond Debt Service, 2021, \$3,794,038
- ▣ IPA's (3), \$248,886
- ▣ MOSGP, \$2,000,000
- ▣ County Farmland Preservation, \$1,100,000
- ▣ Available For Land Preservation, \$21,576,066



# Open Space Trust Fund Bond Programs & Derivative Accounts:

- ▣ #29799, 372 Parcels, 6,408 Acres, \$205,973,040
- ▣ #29669, 149 Parcels, 2,194 Acres, \$23,139,625, MOSGP
- ▣ MCIA, 110 Parcels, 1,939 Acres, \$36,000,000
- ▣ #20052, 17 Parcels, 529 Acres, \$30,000,000
- ▣ #20072, 9 Parcels, 692 Acres, \$20,000,000
- ▣ #91201, 24 Parcels, 421 Acres, \$20,000,000
- ▣ Totals, 681 Parcels, , 12,184 Acres, \$345,512,819

# Highlights Of Last 4 Years:

- ▣ HMF Associates, Holmdel Park, 2018 & 2019
- ▣ Chris' Landing & Deli, Swimming River Park, 2015 & 2018
- ▣ Aberdeen Township Transfer, Freneau Woods Park
- ▣ CJR Properties, LLC, Metedeconk River Greenway





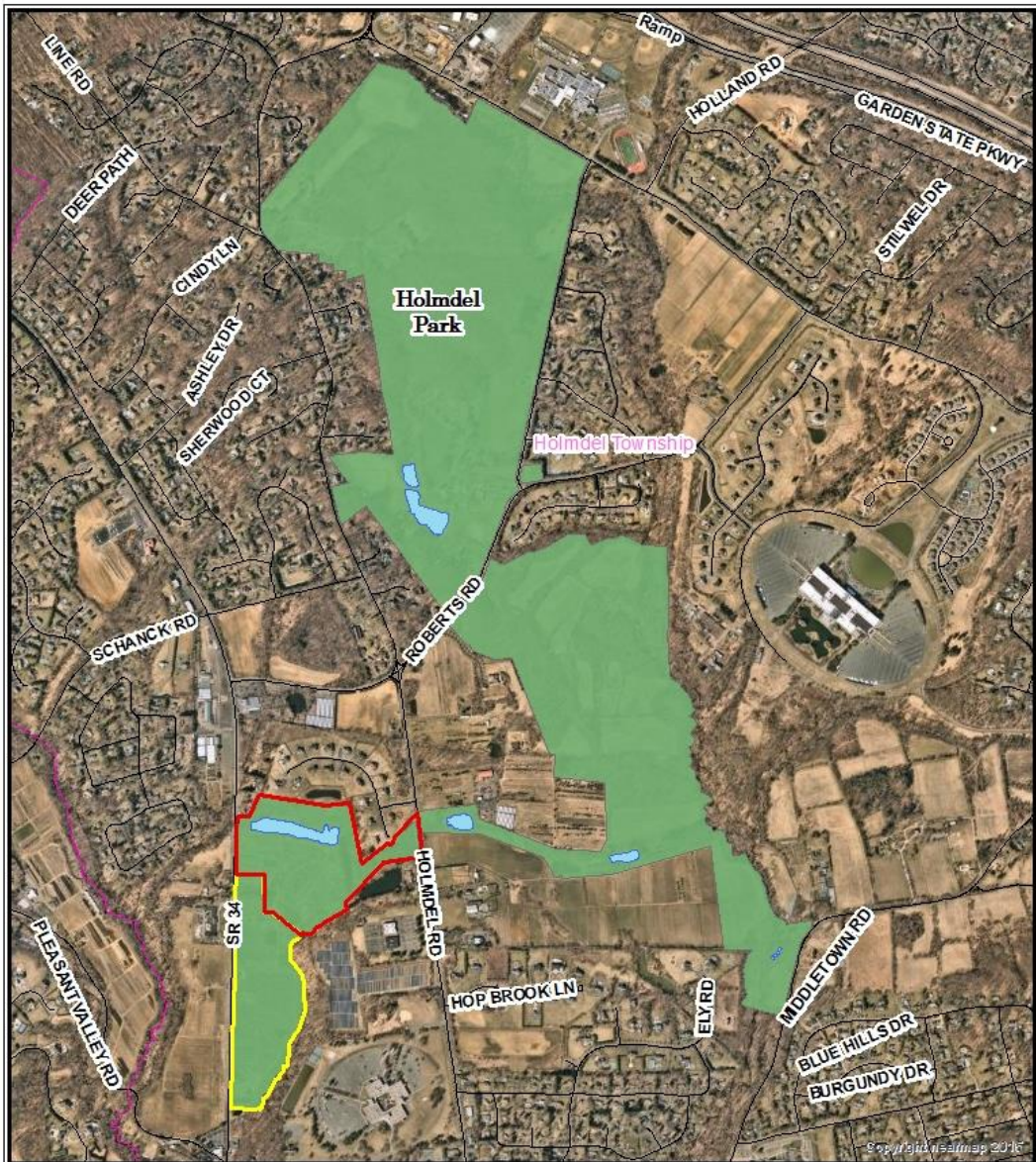
Aerial Map: Holmdel Park  
 Prior to Donation and Purchase from HMF Associates

**Legend**

- Holmdel Park
- Municipalities
- Roads



# Holmdel Park



H.M.F. Associates  
Donation & Sale


Aerial Map: Holmdel Park  
 Donation and Purchase from HMF Associates  
 Route 34 & Holmdel Road  
 Holmdel Township

**Donation +/- 51.542 acres**  
**Purchase +/- 44.320 acres**

**Legend**

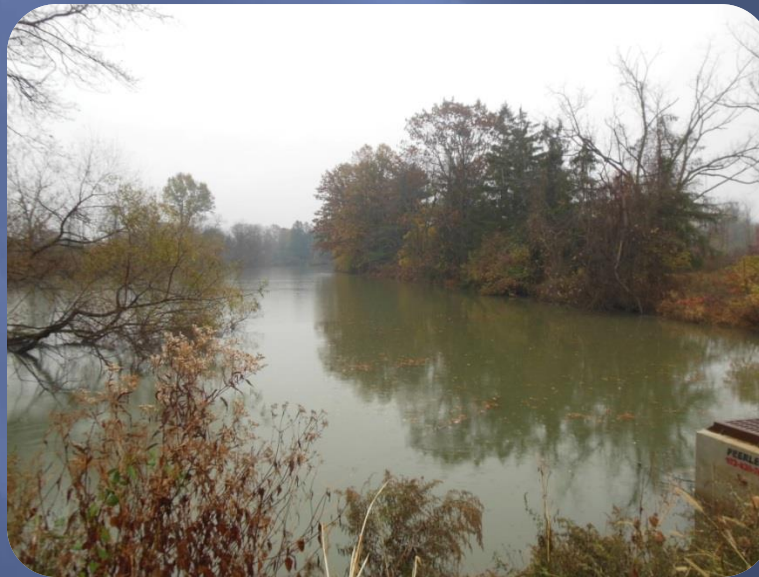
- Park Boundaries
- Donation Area
- Purchase Area
- Municipalities
- Roads

0 0.325 0.65 1.3 Miles

N  
  
 4/2021

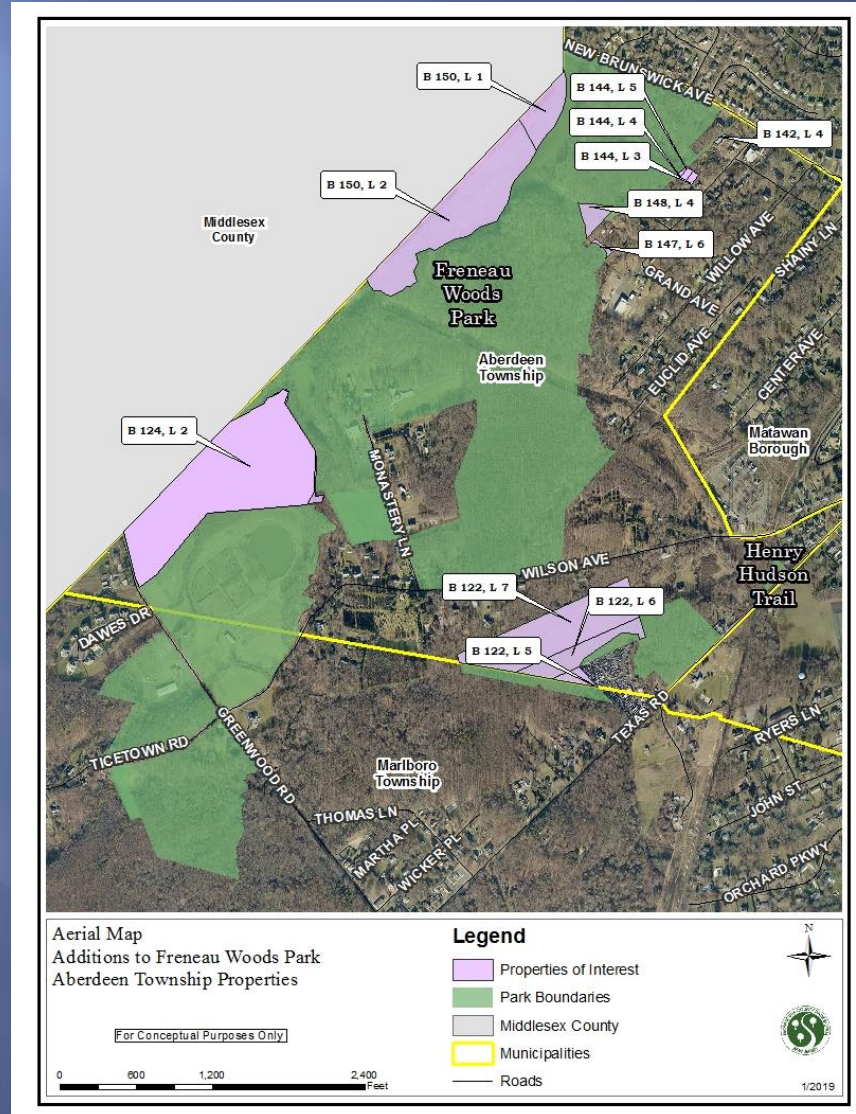
# H.M.F. Associates

- ▣ Donated 52 Acres, \$206,000, 2018
- ▣ Sale, 44 Acres, \$2,348,960, 2019
- ▣ Holmdel Park, 1962, 673 Acres With 96 Acres



Lake Ventura, +/-4.25 Acres

# Transfer Of Aberdeen Twp. Lands:



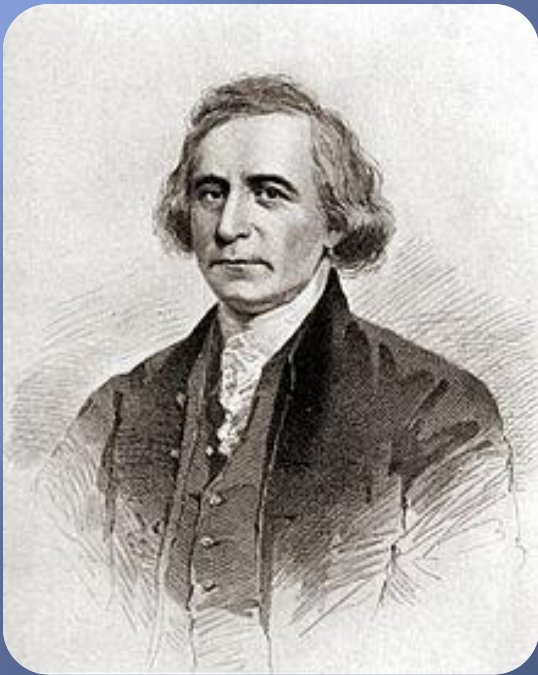


Lake Lefferts  
+/-5.37 Acres



# Freneau Woods Park:

- ▣ Aberdeen Conveyed 52 Acres, \$1.00, Appraised Value, \$752,000
- ▣ Aberdeen's Support Critical To The Park Project
- ▣ Freneau Woods Park, 2014, 312 Acres, \$20,090,918



David Morin Freneau



# Swimming River Park

- ▣ Chris' Landing, 2015, \$3,610,000, County, MCF \$200,000, Total \$3,810,000, +/- 10.8 Acres
- ▣ Chris' Deli, 2018, \$995,000, County, MCF \$25,000, +/- 1.503 Acres
- ▣ Totals, \$4,830,000, +/- 12.308 Acres



Swimming River Greenway  
Boat Launch Area Concept Plan  
Memmouth County Park System 8.6.13

Swimming River Greenway  
Boat Launch Area Concept Plan

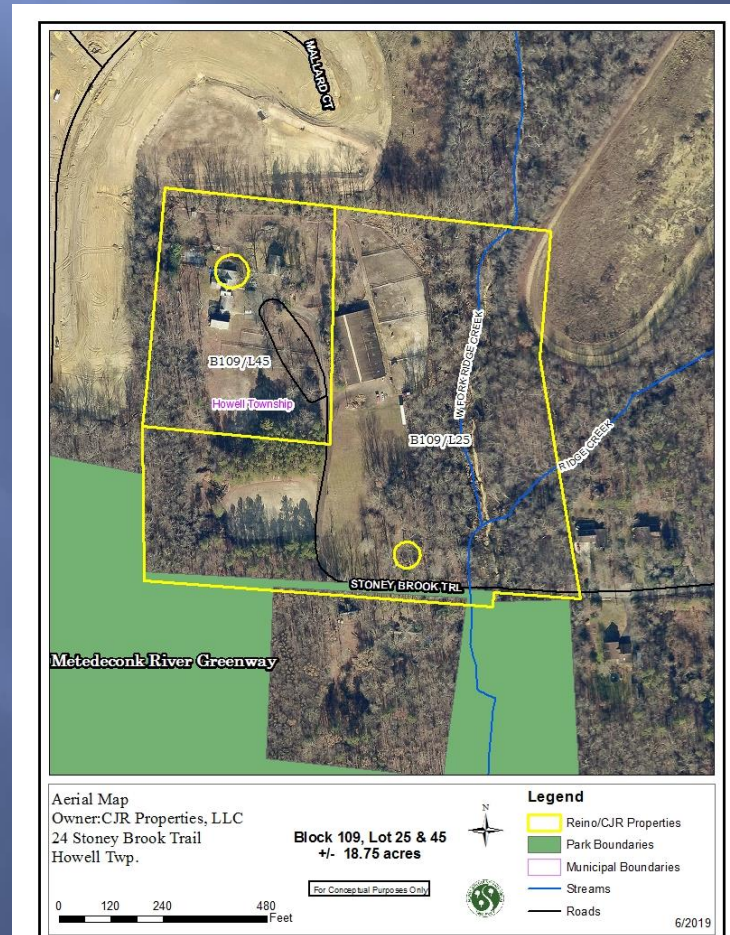




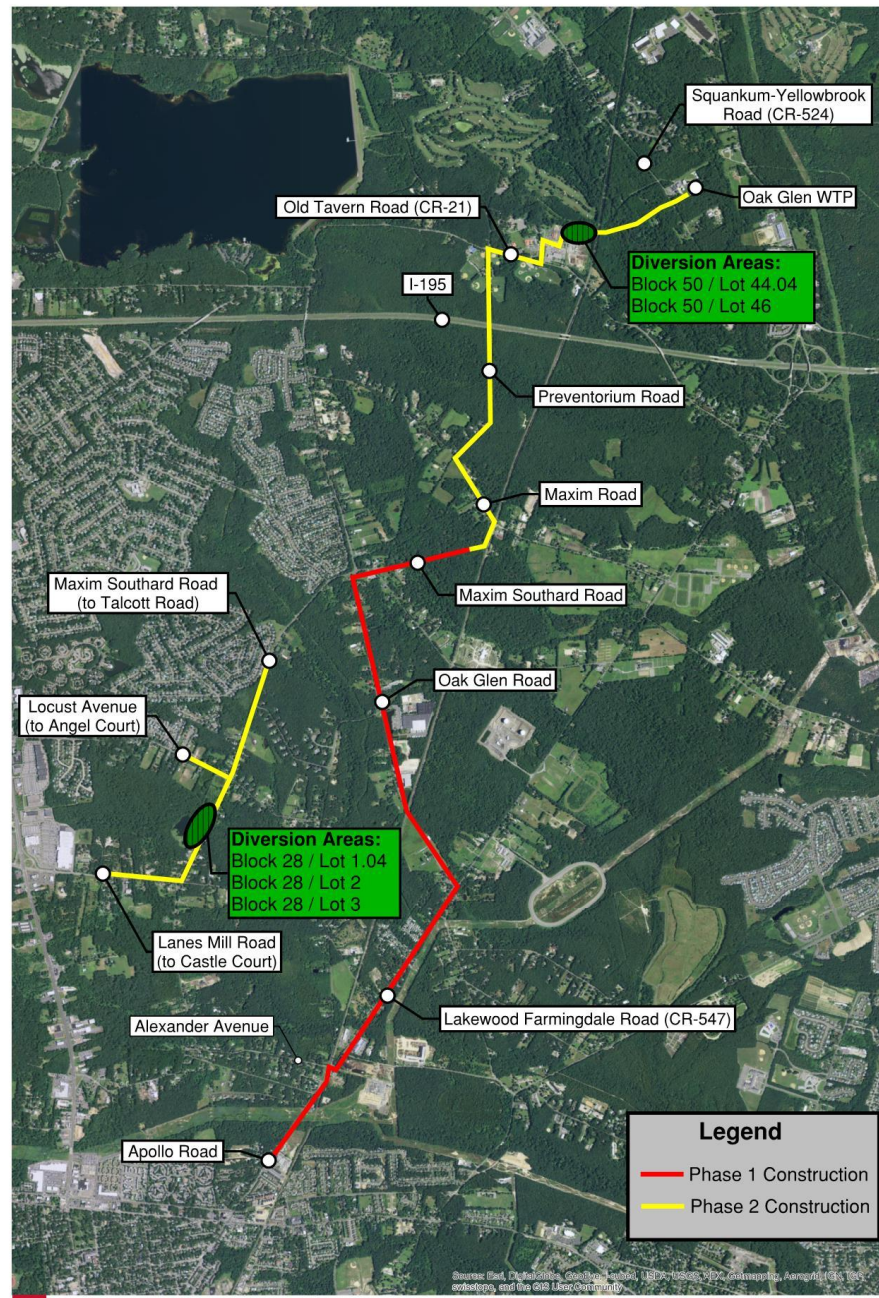
Swimming River

# CJR Properties, LLC

- ▣ Metedeconk River Greenway, 542 Acres, 2000
- ▣ 18.4 Acres, \$1,030,000



# NJAW Howell-Lakewood Transmission Main





# Howell Golf Course Major Green Acres Program Diversion

- ▣ 0.248 Acres, Permanent Easement
- ▣ Land Appraised, \$3,340/ Acre, 10:1, \$33,500
- ▣ Loss of 104 Trees, \$909,400, Replacement Value
- ▣ County Professional Services, \$57,600
- ▣ Typographic Error, \$100
- ▣ Total: \$1,000,100

## *On The Horizon:*

- ❑ Closing Of Pinnacle Materials, Inc., 140 Acres, Manasquan Reservoir, \$10,800,000
- ❑ Completion Of Site Remediation, Swimming River Park, \$850,000 Held In Escrow
- ❑ Working With Middletown Township To Get Easements Required To Complete Bayshore Flood Control Project In Exchange For +/-160 Acres, Bayshore Waterfront Park
- ❑ Preservation Of McDowell Estate Tract, +/-550 Acres, Shark River Park
- ❑ Acquisition Of Eisenberg Property, 7 Presidents Oceanfront Park
- ❑ Acquisition Of Durek Estate Property, +/-93 Acres, Perrineville Lake Park

*Thank You!*

