

Monmouth County Park System  
2010 Annual Report



**GOLD AND GROWING**  
A Celebration of 50 Years  
(1960 – 2010)





## 2010 Monmouth County Park System Department Heads



Park System Secretary-Director since 1966 James J. Truncer (front, center) is surrounded by Department Heads (clockwise from bottom left) Assistant Director Bruce Gollnick; Director of Personnel, Safety and Training Nancy Borchert; Chief of Land Acquisition and Design Spencer Wickham; Public Information Officer Karen Livingstone; County Park Superintendent David Compton; Assistant Superintendent of Parks for Purchasing Bobby Cain; and Superintendent of Recreation Andrew Spears.

## Monmouth County's "Best Idea," Since 1960: Celebrating 50 Years of Parks, Recreation and Open Space

From its humble beginnings in 1960—24 acres of land left over from construction of the parkway and borrowed staff/equipment—the Monmouth County Park System now manages more than 15,000 acres of protected open space at 38 parks as well as dozens of unique recreational facilities. During the past 50 years, as the county population grew (nearly doubling since 1960) and neighborhoods expanded, the Park System was acquiring land across the county to develop parks and protect natural resources. These efforts helped ensure that residents would still have places to relax, exercise and play once the landscape was fully developed.

In 2010, the Monmouth County Park System celebrated its 50<sup>th</sup> Anniversary. It was an auspicious year to be celebrating because it was also a year of milestone events for the National Park Service. The widely acclaimed Ken Burns film, *The National Parks: America's Best Idea* aired on PBS as a 6 episode series to a great deal of fanfare. Also in 2010, the United States Mint began issuing the first in a series of 56 commemorative "America the Beautiful" quarters featuring the national parks, again putting parks in the spotlight.

While the county park system anniversary occurred on a more modest scale, it provided many wonderful opportunities to share five decades of achievements with the public. There were special events, such as Secretary-Director James J. Truncer hosting a "Tea and Talk," a commemorative tree planting at Shark River Park, and a formal 50<sup>th</sup> Anniversary Celebration sponsored by the Friends of the Parks. Some anniversary programs also met with great success...and a few surprises, such as when an outdoor challenge participant submitted an unexpected "final report" or when well-known TV journalist Brian Williams taped a special message for our Facebook page. The first history book about the Park System was also published in 2010.

This year's Annual Report recounts this milestone year of reflection and celebration in addition to the summary of accomplishments and finances.



### BUILDING A COUNTY PARK SYSTEM: THE MILESTONES

Growing steadily since its inception in 1960, the Monmouth County Park System now manages over 15,000 acres of open space. These park lands—and the many recreational programs and facilities now offered on them—were made possible through the continuous support of county residents and officials, generous donations, extensive funding from the state Green Acres Program, Federal Open Space and Housing & Urban Development Funds, and assistance from the Monmouth Conservation Foundation, NJ Conservation Foundation and D&R Greenway Trust.

**1960:** Monmouth County's first park established at Shark River.

**1962:** First nature walk.

**1965:** 3 county parks at Shark River, Holmdel and Turkey Swamp; visitation tops 100,000.

**1966:** Naturalist Division established with wildlife, botany, and natural history programs.

**1967:** Park System purchases first living history site, Longstreet Farm.

**1969: 8 county parks; visitation exceeds 400,000**

**1970:** Outdoor Adventures (canoeing, camping, biking, skiing, etc.) and Cultural Services (theater, trips, concerts, etc.) Divisions created to offer more specialized recreational programs.

**1972:** County's first golf course opens at Howell Park.

**1974:** Huber Family donates first 119 acres to establish Huber Woods Park; their unique home will be converted into the Park System's first Environmental Center.

**1975:** First Monmouth County Fair.

**1975: 13 county parks; visitation exceeds 1 million**

**1976:** Sports & Fitness Division established to offer soccer, basketball, tennis and other programs.



Visitors have been enjoying nature programs at Shark River's man made recreational pond since the late 1960s.



Historic Longstreet Farm, when purchased in the late 1960s and today after years of restoration.



The county's first golf course, Howell Park was acquired in 1967 as a 303-acre farm and developed into a beautiful golf course that opened in 1972 (shown here in 1978).



The trails at Tatum Park exist today thanks to Genevieve Tatum, who generously donated a portion of her family estate in 1973.



Seven Presidents Oceanfront Park underwent environmental restoration and many visitor amenities were added.

**1977:** Park System begins operating Seven Presidents Oceanfront Park (later purchased in 1984) and offers the first E. Murray Todd Half Marathon and first programs for seniors and people with disabilities through Therapeutic Recreation Division.



*With indoor and outdoor facilities, the Sunnyside Equestrian Center provides year-round therapeutic horseback riding.*

**1981:** Therapeutic Equestrian Program established when non-profit Special People United to Ride (SPUR) partners with the Park System.

**1984:** First greenway established at Crosswicks Creek; first Sprint Triathlon.

**1985:** Former farmland is purchased to establish Dorbrook Recreation Area. First community outreach programs mark the beginning of the Urban and Community Recreation Division.



**1987:** Voters approve first dedicated Open Space Preservation Tax, a stable funding source for land acquisition and park improvements in Monmouth County.

**1988:** Manasquan Reservoir established as drinking water source and recreation facility; will eventually become the Park System's busiest site.



*In 2004, the playground at Dorbrook was updated with the county's first universal access playground for people of all abilities.*

**1989: 24 parks; visitation exceeds 2.5 million**

**1990:** Park System begins converting former railroad right-of-way into the Henry Hudson Trail.

**1997:** Property belonging to the former Marlboro Psychiatric Hospital (land used for farming and livestock) acquired for conversion into Big Brook Park.

**1999:** First Off-leash Dog Area opens at Thompson Park.

**2004:** Skateplex opens at Seven Presidents Oceanfront Park; 9/11 Memorial opens at Mount Mitchill.



*Bayshore Waterfront Park was created by removing developed properties and returning beachfront to its original state.*

**2007: 38 parks; visitation tops 5 million**

**2009:** Completely rebuilt Thompson Park Visitor Center reopens (after being destroyed in 2006 fire).



*Preservation of greenway along the Manasquan River protects a vital, local water resource and offers access to the river.*

***With 39 different properties, the template for parkland in Monmouth County is considered fairly well set. Future acquisitions will focus primarily on adding parcels to existing parks until the county reaches its goal of 19,000 acres of preserved open space, and developing properties in accordance with the guidelines set forth in the County Open Space Plan, available online at [www.monmouthcountyparks.com](http://www.monmouthcountyparks.com) (click "About Us").***

## 50TH ANNIVERSARY EVENTS

Park System Secretary-Director James Truncer hosted a “**Tea and Talk**” at the Thompson Park Visitor Center to discuss some of the stories behind the founding and development of the Monmouth County Park System.

A 50<sup>th</sup> Anniversary **Commemorative Tree Planting** event was held at the county’s first park, Shark River (established in 1960) on Arbor Day. The event featured a presentation and guided walk by Assistant Park Superintendent Tom Fobes (see front cover), and participants helped park staff plant a Red Oak, NJ’s state tree.

Staffers designed a festive **Anniversary Parade Float** in 2010 to march in the Freehold Memorial Day Parade to highlight recreational activities in the parks. The float featured equipment for outdoor adventures such as camping, archery and kayaking.

Every year, exhibit cases in the shelter buildings at Holmdel Park and Turkey Swamp Park feature a rotating series of displays crafted by park staff to highlight topics of interest to park visitors. In 2010, this **50<sup>th</sup> Anniversary Exhibit** made the rounds.

A set of formal **50<sup>th</sup> Anniversary Display Panels** also traveled to a few county libraries in 2010, accompanied by park literature, to remind residents to visit their county parks and enjoy some healthy outdoor activities.

A formal **50<sup>th</sup> Anniversary Celebration and Fundraiser**, sponsored by the Friends of the Parks, was celebrated at the Thompson Park Visitor Center in June. Though the weather was a bit soggy, visitors enjoyed live music, craft demos, wagon tours, and nature activities; and were the first to see the newly launched “Identi-tree” self-guided walking tour of the estate ground trees.



*The newly rebuilt Visitor Center is a lovely place to spend a springtime Sunday afternoon.*



*Shark River Park Ranger Jim Gregory applies a healthy dose of mulch to protect the newly planted 50th Anniversary Red Oak.*



*A special exhibit highlights major park achievements during its first 50 years.*



*Staff from different park divisions combined talents to design this anniversary float.*



*Guests celebrated the Park System’s 50th on the grand front porch of the Visitor Center.*



*Manalapan Library staff helped the Park System celebrate by featuring relevant outdoor books and videos around our literature.*



*A 50th Anniversary wagon ride revisited Thompson Park history.*

All six Park System Golf Courses participated in a **50<sup>th</sup> Anniversary Putting Challenge** to encourage golfers and non-golfers alike to give this healthy outdoor activity a swing.

As the Park System's largest and longest-running annual event (approx. 80,000 attendees over 5 days each July), 50<sup>th</sup> Anniversary spirit was on display at the **Monmouth County Fair**.



*Cake and cupcake decorating, sponsored by Whole Foods.*



*50th Putting Contest participants test their skills at Howell Park Golf Course.*



*This Park System history exhibit, designed by Naturalists, contained water features, historic artifacts, live animals and plenty of hands-on activities.*



*Fair staff show off the Park System 50th Anniversary Logo Show Car on MotorSports Night. (clockwise from bottom left) Recreation Coordinator at Outdoor Adventures Ryan Kimble, Asst. Recreation Supervisor with the Naturalist Department Ruth Ann Zobel, and 2010 Fair Chair and Thompson Park Senior Manager Rick Royle.*



*Ranger cut-outs direct Fairgoers to find the 50th Anniversary Fun Facts posted around the grounds.*



Encouraging area residents to visit more parks and learn about other activities, staff provided a free **Program Raffle at Thompson Park Day**, another busy event (over 9,000 attendees).



*In addition to relay races, rock climbing and dozens of other outdoor activities, Thompson Park Day attendees won the chance to enjoy future programs in the parks for free.*

### SPECIAL 50TH ANNIVERSARY PROGRAMS

In 2010, staff who design the more than 4,000 programs and activities offered in the county parks each year came up with some extra special new programs to celebrate the Park System's 50<sup>th</sup> Anniversary. For the Sports & Fitness Division, it was a new race, the **Doorbrook 500**.



Rockin' this trail reveals a stone with the word clue, "earth."

**50 Nifty Things to Do in the Parks** and **The 50 Miler Challenge** were two, free self-guided programs designed to encourage people to enjoy the parks by completing certain tasks. For their efforts (and after filling out a form and mailing it in) they received a commemorative T-shirt. A couple of extra-dedicated individuals submitted a journal of their adventures.



The Senior Hikers took on the 50 Miler Challenge with gusto and completed their task en masse one sunny afternoon at Thompson Park in early September.

A few participants who completed the **Rockin' the Trails** program wrote in to tell us how much they enjoyed the experience. This free, self-guided adventure hike directed visitors to find stepping stones (each with a special word) on 15 trails throughout the parks for a prize.

*"I introduced this adventure to my two sons (9 and 11 years old) in June, along with a gift of two, fun walking sticks (compass on top of the handle)! All summer, into the fall and through this past weekend, we rocked the trails of Monmouth County finding the next stepping stone... We had a fantastic time and just wanted to say thanks!!!!"*

**Campfire programs** are a long-standing tradition at the fire ring in Turkey Swamp Park, so Outdoor Adventures and Naturalist staff made sure to include them as part of camper activities held this anniversary year.



The Park System's earliest nature programs featured campfire talks about the Lenape Indians who had lived near Turkey Swamp Park.

With all the beautiful preserved barns around the parks, it didn't take long to come up with the idea for an autumn **Barn Dance and Jack-o-Lantern Jamboree** to celebrate.



Families carved pumpkins and learned to line-dance in the beautiful, old barn at Thompson Park.

In addition to posting plenty of festive photos from 50<sup>th</sup> Anniversary events and programs to the Park System website and Facebook page, park staff also created a special **50<sup>th</sup> Anniversary Video**, and dozens of new **Event and Interview Videos** highlighting outdoor activities, nature events and other ways to enjoy the parks.



Park Naturalist Tanya Dinova describes why leaves turn color in the fall.



Ryan Kimble of Outdoor Adventures explains geocaching, a highly popular outdoor activity that involves GPS and hidden “treasures.”



A summary of Park System history, first presented for the 50<sup>th</sup> Anniversary, is still available for review online.

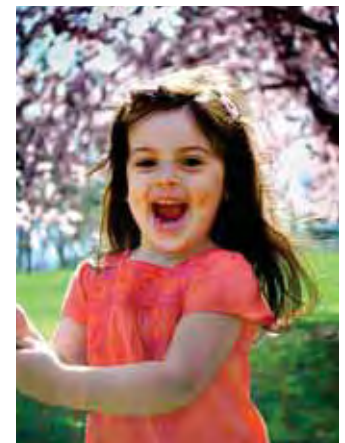
Visitors to [www.monmouthcountyparks.com](http://www.monmouthcountyparks.com) could enjoy a complete **Online Retrospective of Park History** with “Then & Now” photos and highlights from the past 50 years.

The Park System was delighted when Middletown native and NBC News anchor Brian Williams taped an anniversary message recounting his memories growing up in the Monmouth County Parks, which was posted to our facebook page.



Brian Williams wished the Park System a “Happy Anniversary” in 2010.

People were invited to celebrate the parks by participating in two contests offered online. The **Monthly Photo Contest** showcased area talent with some gorgeous images taken in the parks, then posted online for everyone to enjoy. The **Children’s Summer Writing Contest** attracted entries like the one from a 9 year-old Middletown resident named Katie, who described a game she and her sisters play at Holmdel Park’s playground called ‘you can try to beat me but you can’t defeat me.’



Of all the beautiful photo contest entries and winners, this photo, submitted in May for the “Spring in the Parks” theme, took first place overall.

Finally, the first book about Park System history was published in 2010. Author of **The Monmouth County Park System—the First 50 Years**, Clifford Zink attended book signings within the parks, and at local bookstore events. The book is available through the Friends of the Parks, online at [www.friendsofmonmouthcountyparks.com](http://www.friendsofmonmouthcountyparks.com) or in Thompson Park, Lincroft.



With its hard cover binding and many gorgeous photos, the Park System history book makes a fine addition to any home library.

## 2010 HIGHLIGHTS

### Community Connections

- More than 50 local high school teams continue to use park facilities for games, tournaments, meets, etc: 12 golf teams use the county golf courses; 45 cross-country teams use Holmdel Park, Manasquan Reservoir, Wolf Hill Recreation Area and Shark River Park as their home course; and one crew team uses the Manasquan Reservoir.
- Staff from the Urban and Therapeutic Recreation Divisions attended many **community events** to showcase park resources for special populations, specifically Urban Aid communities and individuals with disabilities.



Staff from Princeton Battlefield fires away at a Historic Walnford demonstration.

- During one of the busiest beach seasons in recent history, the lifeguards at Seven Presidents Oceanfront Park **rescued 157 swimmers** and assisted another 188.
- Historic Walnford hosted a **workshop** called “Presenting the Past,” sponsored by the NJ Living History Council (NJLHC) where attendees from around the state saw demonstrations on black powder safety procedures for living history programs.



Mobile Recreation is just one successful component of Urban Recreation.



Volunteers now monitor endangered beach nesting birds like the Piping Plover.

### New Programs & Activities

- The Therapeutic Recreation day program for people with special needs now offers a **“Fine Arts” component** at the Park System’s Creative Arts Center.



Archery continues to grow in popularity.

- **After-work and Sunday morning hikes** were added to the 2010 line-up of programs offered by Outdoor Adventures. Archery and geocaching remain extremely popular.



Parks began grooming cross-country ski trails at Thompson Park during 2010-2011 season.

- The Urban Recreation Division held an **Extreme Team Summer Camp Reunion** that brought participants back to enjoy the next level of outdoor activities and encourage continued park use.

- The Volunteers in Parks program has formally implemented a new **Beach Nesting Bird Monitor Program** to help park staff track and protect the endangered Piping Plover and Least Tern populations at Seven Presidents Oceanfront Park.



The Eco-Elephant Family Flea Market at Dorbrook Recreation Area.

- A new **Eco-Elephant Family Flea Market** was held twice this past summer. Hundreds of vendors participated as shoppers helped reduce, re-use, and recycle their unwanted items.

- **SOLD OUT!** The Lobsters & Lighthouses Trip and other **park sponsored travels** continue to fill as local residents seek more economic vacations.

- A new **anti-bullying program** offered through Cultural Services was a success for children grades K-2, and “Camp Correspondents” a week-long writing camp (including a visit to a local newspaper), received great press.

## Improved Services & Incentives

- The Park System added **online surveys** to assess how visitors enjoy park services and programs. In 2010, surveys covered the Fair, Thompson Park Day, and dozens of individual programs such as sailing, hikes, trips, and sports camps.
- In response to heavy snowfall in 2010, many upgrades to the **Snowshoe and Cross-Country Ski Rental Program** at Thompson Park were made. It was moved to a larger, heated facility at the Visitor Center and staff began grooming the trails to mark/maintain specific routes, especially for beginners.



An eco-kayak tour of the Navesink River.



Participants with special needs reached impressive milestones in the therapeutic riding program in 2010.



Longstreet Farm's Phil Andras is a prize-winning plow operator.

- Naturalists and Outdoor Adventures staff teamed up to develop a new program for visitors to explore nature...by boat. The **Eco-Kayak Series** also offered a “flexible-fee” option where people could use their own kayak (instead of one provided by the Park System).
- Park staff continues to meet with other county agencies to review and coordinate opportunities for **shared services**. Sharing resources within the Park System are Naturalists who now assist with weeding/landscaping at the Manasquan Reservoir Environmental Center.
- Staff at Sunnyside Equestrian Center implemented cost-saving **natural health management for the horses** (eg. hoof care, diet and worming schedule, and increased time spent outdoors).
- The Park System's Coastal Activity Center now opens earlier for after school recreation to **serve participants who don't have after-school care**.
- Visitors may now **rent canoes at Thompson Park on designated weekends** (the third boat rental site in the county parks).



Canoe rentals and lessons are now available at Thompson Park.

## Awards & Accomplishments

- Interpretive staff at **Historic Longstreet Farm** took first place in a plowing competition held during Mercer County's 26<sup>th</sup> Annual Plow Match at Howell Living History Farm.
- **Park System Planners** along with county/municipal planners and engineers received an award from the American Water Resource Association-NJ Section for work on the Courtyard Rain Garden Project at Village Elementary School in Holmdel.



Golf staff were recognized for helping build this instructional golf feature at a Freehold vocational school.

- **Golf Staff** were recognized for working with students, teachers and members of industry to help construct the Future Farmers of America “FFA Links” Golf Hole, an outdoor classroom at the Monmouth County Career Center in Freehold.
- **Hominy Hill Golf Course** in Colts Neck was recently named Readers' Favorite Public Golf Course (and Charleston Springs a runner up) by New Jersey Monthly Magazine. The Park System's **Henry Hudson Trail** was also voted the Best Biking Trail in NJ and Hartshorne Woods one of the best hiking trails.



Park staff helped design this water-conserving rain garden in Holmdel, shown here under construction.

## THE COUNTY PARKS IN 2010: ACREAGE BY CATEGORY

### Open Lands

Baysholm Tract.....	71
Yellow Brook Tract.....	369

### Recreation Areas

DuBois Creek Recreation Area.....	165
Dorbrook Recreation Area.....	535
Sunnyside Recreation Area.....	135
Wolf Hill Recreation Area.....	92
Deep Run Recreation Area.....	54

### Regional Parks

Bayshore Waterfront Park.....	227
Big Brook Park.....	415
Clayton Park.....	438
Hartshorne Woods Park.....	794
Holmdel Park.....	565
Huber Woods Park.....	376
Perrineville Lake Park.....	929
Shark River Park.....	977
Tatum Park.....	366
Thompson Park.....	667
Turkey Swamp Park.....	2,173

### Special Use Areas

Deep Cut Gardens.....	54
East Freehold Showgrounds.....	81
Historic Longstreet Farm.....	9
Historic Walnford.....	36
Manasquan Reservoir.....	1,204
Monmouth Cove Marina.....	11
Mount Mitchill Scenic Overlook.....	12
Seven Presidents Oceanfront Park.....	38

### Unclassified

Durand Tract (leased to Freehold Twp.).....	94
Weltz Park.....	169

### Conservation Area

Fisherman's Cove.....	55
-----------------------	----

### Golf Courses

Bel-Aire.....	114
Charleston Springs.....	781
Hominy Hill.....	262
Howell Park.....	311
Pine Brook.....	61
Shark River.....	176

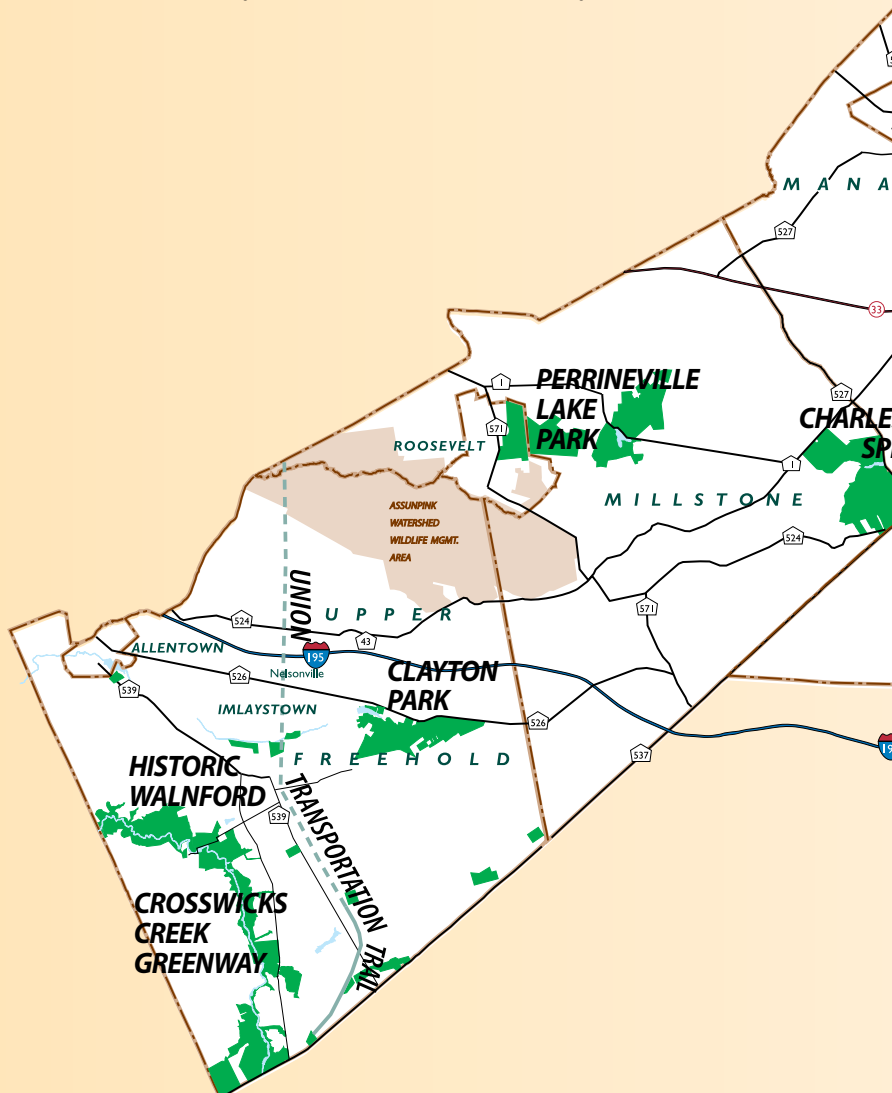
### Greenways

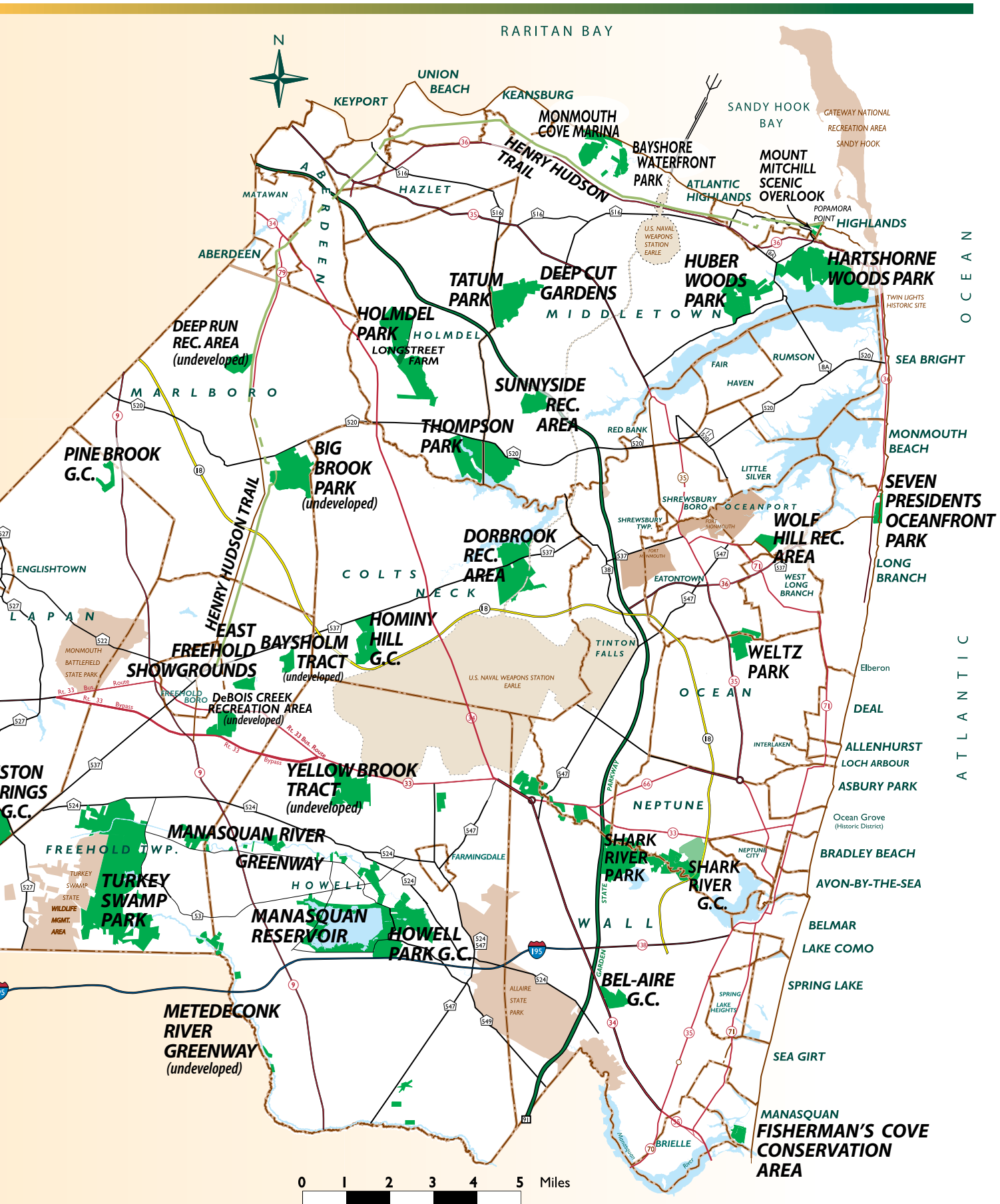
Crosswicks Creek.....	1,546
Henry Hudson Trail (HHT).....	110
Manasquan River.....	356
Metedeconk River.....	196
Union Transportation Trail (UTT).....	6

**TOTAL ACRES OWNED AND/OR MANAGED BY THE PARK SYSTEM..... 15,030\***

Another 2,209 acres of open space are preserved as easements.

*\*This number includes park acreage under the following Use Agreements: 1052 acres at the Manasquan Reservoir owned by the NJ Water Supply Authority and leased to the Park System for perpetual use; 83 acres of the Henry Hudson Trail are county-owned, and leased to the Park System.*





## NEW PARK FACILITIES & IMPROVEMENTS IN 2010

- Improvements were made to the concession area and pavilion at **Seven Presidents Oceanfront Park**.
- The **Manasquan Reservoir Environmental Center** received new solar panels to improve energy efficiency and a new floating dock so boats can stop here on tours of the reservoir. A new pontoon boat will also allow park staff to meet the growing demand for tours. A new River Otter Display made its debut in 2010.
- The first 2-miles of the **Union Transportation Trail** opened in Upper Freehold; this trail will eventually stretch for 9 miles northward.
- Renovation of **Howell Park Golf Center** was completed in 2010, featuring a new lounge, retail area and restrooms. Improvements to **Bel-Aire Golf Course** continued with renovation of two golf holes for more challenging play.
- The original 1-ton turbine from the gristmill at **Historic Walnford** was restored and placed on display. (The mill operates by electric power due to diminished water flow.)
- **Popamora Point**, the current terminus of the 24-mile Henry Hudson Trail in Atlantic Highlands now has a new parking lot and restroom facility.
- Park staff repaired storm damage to the fishing pier at **Bayshore Waterfront Park**, and damage to bridges on the **Henry Hudson Trail** and **Howell Park Golf Course**.
- The new **Claypit Creek Section of Hartshorne Woods Park** opened in 2010, a great site to dog walk, picnic or appreciate nature.



*New solar panels.*



*River Otter display.*



*A new floating dock.*



*Aerial view of Popamora Point.*



*Walkers, bicyclists and equestrians enjoy the UTT.*



*Historic Walnford's restored cast iron turbine.*



*This storm damaged fishing pier was quickly repaired.*



*New! Claypit Creek addition to Hartshorne Woods Park.*

## OPEN SPACE PRESERVED IN 2010

The Monmouth County Park System acquired a total 475 acres of land in 2010 at a cost of \$14.7 million. Of this total, 362 acres were acquired as fee simple (owned outright), and another 113 acres were acquired as conservation or public access easements.

### Acres Acquired in 2010

LOCATION	ACRES
Shark River Park	20
Turkey Swamp Park	30
Hartshorne Woods Park	0.8
Weltz Park	4
Clayton Park	0.3
Henry Hudson Trail	10
Manasquan River Greenway	19
Crosswicks Creek Greenway	81
Big Brook Park	36
Metedeconk River Greenway	75
Yellow Brook Tract	32
Deep Run Recreation Area	54
	<b>SUBTOTAL 362</b>
Easements Purchased in 2010	113
	<b>TOTAL 475</b>

Highlights include purchase of YMCA Camp Arrowhead as a future addition to Big Brook Park and acquisition of the former Marlboro Airport as Deep Run Recreation Area next to the Henry Hudson Trail in Marlboro.



The former Marlboro Airport, located right next to the Henry Hudson Trail, is earmarked for active recreation.

To date, the amount of land preserved as open space by the Monmouth County Park System is 15,030 acres, with another 2,209 acres in easements, for a combined total of 17,239 acres. A number of purchases were made possible with assistance from the Monmouth Conservation Foundation, the NJ Conservation Foundation and the D&R Greenway Land Trust.

## 2010 PARK ATTENDANCE

Bayshore Waterfront Park.....	164,373
Bel-Aire, 18-hole course.....	23,066
Bel-Aire, 9-hole course.....	11,340
Clayton Park.....	24,178
Charleston Springs Golf Course.....	54,899
Deep Cut Gardens.....	78,757
Dorbrook Recreation Area.....	701,537
East Freehold Showgrounds.....	138,935
Fisherman's Cove.....	51,267
Hartshorne Woods Park.....	161,308
Henry Hudson Trail.....	182,315
Historic Longstreet Farm.....	99,424
Historic Walnford.....	10,206
Holmdel Park.....	953,803
Hominy Hill Golf Course.....	30,405
Howell Park Golf Course.....	35,018
Huber Woods Park.....	93,348
Manasquan Reservoir.....	1,101,651
Monmouth Cove Marina.....	15,888
Mount Mitchill Scenic Overlook.....	201,872
Pine Brook Golf Course.....	24,690
Seven Presidents Oceanfront Park.....	469,134
Shark River Golf Course.....	34,318
Shark River Park.....	156,893
Tatum Park.....	76,833
Thompson Park.....	371,194
Turkey Swamp Park.....	212,040
Wolf Hill Recreation Area.....	108,189
<b>TOTAL ATTENDANCE 2010.....</b>	<b>5,586,881</b>



Hundreds participate in the Bel-Aire Youth Golf tournament each summer.

### For Comparison... Total Park Attendance Over Last 5 Years

Year	Total Park Attendance
2009	5,282,469
2008	5,087,450
2007	5,059,911
2006	4,821,630
2005	4,705,344

### THANK YOU 2010 PARK VOLUNTEERS

Every year, hundreds of individuals enrich the Monmouth County Park System through their dedication in the “Volunteers in Parks” program. Their steadfast support contributes to the success of recreation programs and special events, and helps maintain and beautify so many park facilities.

In 2010, one volunteer reached the 5,000 lifetime hour milestone, another reached 2,000 hours, and two more reached 1,000 hours—see their names highlighted below. In fact, since 1993 (when recording first began) the Park System has been fortunate to recognize 61 special individuals for contributing 1,000 hours of their time to the parks.

#### Volunteer: over 100 Hours

##### **Werner Aehlich (1,000 lifetime hrs)**

Jeff Bauer  
Pete Brady  
Emma Caccavale  
Larry Canale  
Barbara Carroll  
Andrew Damato  
Robert D. DeBarba  
Louise DelCollo  
Maureen C. Docker

##### **Harden Fowler (2,000 lifetime hrs)**

Christine G. Generoso  
Gregory G. Graff  
Patrick Hannan

##### **James Henry (5,000 lifetime hrs)**

Joyce Henry  
Julie Hunt  
Stephanie Marie Hunt  
Linda Lawton  
Gerry Lingner  
Lois Lyons  
Lisa Malandrino  
Ralph Maratea  
Michael S. Mastropaolo  
Patrice McCoy  
Barry I. Miller  
Eileen Murphy  
Alex Osnato  
Ellen Rice  
David E. Roche  
Linda A. Rovder  
Marlis Schlegel-Steadman  
Pat Spangler  
Eleanor C. Swanson  
Brynne Clark Tessem

##### **Barbara A. Venanzini (1,000 lifetime hrs)**

Jackie West

#### Volunteers: 40-99 Hours

Pam Adams  
Lee Anderson  
Andrew Antonioli  
Rosemary Bagwell  
John Bauer  
Linda Belkin  
Joan Berg  
Patricia Bernstein  
Sarah B. Bertekap  
Timothy P. Best  
Rosemary E. Bettikofer  
Elise D. Capelli  
John P. Connors  
Linda Csernica  
Judy Curry-Phipps  
Dolores Cutler  
Eric Dalton  
Janne Darata  
Barbara Duggan  
Jennifer R. Dumas  
Gladys Elena Dunn  
Gregory M. Duval  
Patricia A. Farrell  
Fred R. Feldman  
Carol D. Fornwald  
Michael Galanti  
Ruth Gariepy  
Jacqueline R. Gilligan  
Andrew R. Gledhill  
Debbie Glenn  
Christina Goumas  
Susan L. Halle  
Liz Hesper  
Katie R. Jaworski  
Charles Katten  
Alison Nicole Kelly  
Katha A. Larity  
Debra Lotosky

Carol M. Makhoul  
Michael J. Matlaga  
Norman T. Mayers  
Bob Michaels  
Michael S. Miller  
Bonnie Muir  
Bill F. Murphy  
Dawn Nahory  
Arthur Neill  
Jackie Neill  
John Neill  
Arlene J. Newman  
Deborah A. Palumbo  
Stephanie Pilot  
Robert L. Randall  
Kai Rau  
Howard Rockhill  
Anthony Rosati  
Jay Schaeffer  
Barbara Schinkel  
Natale C. Siclare  
Carol Smith  
Joanne Smith  
Bud Spangler  
Cristie J. Steinhauer  
Lauren E. Strazdis  
Jennifer M. Streltsova  
Dianne L. Swenson  
Doris Tierney  
Molly Tumulty  
Jessica M. Viverito  
Janet F. Vivian  
Emma Q. Wade  
Elaine M. Weigl  
Joel Whitman  
Sandra Wolfe  
Laura D. Wroblesky  
Richard A. Yackel

## 2010 VOLUNTEER GROUPS

### Community Groups

Brookdale Community College  
Central Jersey Geocachers  
Jersey Off Road Bicycle Association  
Monmouth Boy Scouts of America  
Monmouth Council of Girl Scouts  
Monmouth County Audubon Society  
Monmouth University  
Navesink Swimming River Group  
Rutgers Cooperative Extension Master Gardeners  
Princeton University  
Southern Monmouth Chamber of Commerce  
Timberland Stores, Jackson & Ocean Twp.  
University of Delaware



*Park volunteers assist in many program areas, from assisting with the climbing wall at events to distributing t-shirts at the races.*

### School Groups

Allentown High School  
Allied Health & Science - MCVSD  
Bayshore Middle School  
Biotechnology High School - MCVSD  
Brick High School  
Christian Brothers Academy  
Colts Neck High School  
Communications High School - MCVSD  
Dorothy B. Hersch High School-The Arc of Monmouth  
Freehold Borough High School  
Freehold Twp. High School  
The Goddard School  
Henry Hudson Regional High School  
High Tech High School - MCVSD  
Holmdel High School  
Howell High School  
Lake Rivera Middle School  
Manalapan High School  
Manasquan High School  
Marlboro Memorial Middle School  
Mater Dei High School  
Middletown Twp. High School North  
Middletown Twp. High School South  
Monmouth Beach School  
Nut Swamp Elementary  
Raritan High School  
Red Bank Catholic High School  
Red Bank Regional High School  
Rumson Fair Haven  
St. John Vianney High School  
St. Rose Grammar School  
Thompson Middle School  
Wall Township High School



## WITH GRATITUDE TO OUR 2010 PARK PARTNERS



In 2010, 903 volunteers contributed over 20,000 hours of service to the Park System. From maintaining trails and staffing events, to assisting with environmental clean-ups and monitoring endangered bird species at Seven Presidents Oceanfront Park, a variety of notable jobs are performed by volunteers.

Volunteers with the Equestrian Program at Sunnyside and Program/Camp volunteers each logged over 5,000 hours in 2010. Volunteers helped to keep our beaches clean, tended to the gardens in a variety of parks, and even planted trees. **Want to make a difference? Contact the Park System's Coordinator of Volunteers at 732-832-4000, ext. 4283, or email [mkelly@monmouthcountyparks.com](mailto:mkelly@monmouthcountyparks.com).**



A non-profit charitable organization, SPUR raised money to build the state-of-the-art Sunnyside Equestrian Center, home of the Park System's Therapeutic Equestrian Program in Lincroft. SPUR also funds the purchase of horses and equipment, and helps pay for student lessons and volunteer training.

In 2010, SPUR provided "riderships" for 94 students with special needs to attend therapeutic riding lessons at this site. **Contact SPUR at 732-224-1367, or by visiting [www.spuronline.org](http://www.spuronline.org).**



*2010 National Trails Day Volunteers*



*SPUR-funded riding lessons provide unique skills and experiences for children and adults with special needs.*

Monmouth County

### Friends of the Parks

This non-for-profit charitable organization, comprised of more than 500 citizen and business members, is committed to supporting the Monmouth County Park System. Since 1991, they have provided over \$2 million in funding for special recreation programs and improvements in the parks. In 2010, these included exhibits for the newly renovated Bayshore Activity Center; a cow, a mule and peach trees for Historic Longstreet Farm; and the cost of printing/sales for the Park's System's new book. **To learn more, visit online at: [www.friendsofmonmouthcountyparks.com](http://www.friendsofmonmouthcountyparks.com), or call the Friends Office at 732-975-9735.**



*The Friends help fund many special purchases, such as animals for Longstreet Farm.*



The Monmouth Conservation Foundation (MCF) is a private, non-profit organization dedicated to protecting the county's open space, farmlands and recreational areas. During its 34 year history, MCF has helped to preserve over 6,500 acres. MCF partners with the Monmouth County Park System, as well as local municipalities and other organizations, to ensure that Monmouth County's beautiful open spaces remain available for future generations to enjoy.

MCF continues to work on several projects with the Park System, which when completed, will add hundreds of new acres to the county parks. **For more information please visit [www.monmouthconservation.org](http://www.monmouthconservation.org) or call 732-671-7000. The Monmouth Conservation Foundation's mailing address is PO Box 4150, Middletown, NJ 07748.**



*The MCF provides technical assistance and financial support to help preserve Monmouth County's diminishing open spaces.*

# 2010 VALUE OF IN-KIND DONATIONS, CONTRIBUTIONS & GRANTS

(unaudited)

## Donations and Contributions

### Friends of the Parks

RAP Programs	\$12,221.00
Therapeutic Recreation	\$2,464.77
Volunteers	\$2,084.39
Deep Cut Gardens/Roses	\$562.00
Employee Recognition Program	\$4,395.39
Fair Sponsorship from Whole Foods	\$1,500.00
Longstreet Costumes	\$744.31
Manasquan Reservoir Visitor Center Exhibit	\$2,183.00
History Book	\$50,503.23
Thompson Park Tree Grove Plaques	\$2,560.00
Union Transportation Trail Opening	\$170.00
50 <sup>th</sup> Anniversary Celebration	\$7,192.00

**86,580.09**

### Land

Former Marlboro Airport Property (partial donation)	<b>1,700,000.00</b>
---	---------------------

### Miscellaneous Donated Items

**735.00**

### Monmouth Conservation Foundation (MCF)

Acquisition and Support Services	<b>26,500.00</b>
----------------------------------	------------------

### Monmouth University Urban Recreation Camps

**9,200.00**

### Special People United to Ride (SPUR)

Scholarships	\$32,750.00
In Kind Donations/Equipment & Misc. Items	\$6,000.00
Instructor Training	\$1,400.00

**40,150.00**

### Sponsorships - Monmouth County Fair

**36,000.00**

## Grants

<b>NJ Green Acres Grants</b> - Various Acq. Projects	\$1,250,000.00
<b>NJ Clean Energy Program</b> - Solar Panels at Sunnyside	\$447,204.36
<b>NJ Trails Grant</b> - Hartshorne Woods	\$25,000.00

**1,722,204.36**

## Volunteer Hours

903 volunteers for a total of 20,143 hrs. @ \$20.85/hr*	<b>419,983.64</b>
---	-------------------

## Community Service Hours

40 individuals for a total of 1,171.75 hrs. @ \$20.85/hr*	<b>24,430.99</b>
---	------------------

**TOTAL \$4,065,784.08**

\*Based on Points of Light value

# 2010 FINANCIAL STATEMENT

(unaudited)

## Combined Statement of Revenue, Expenses and Fund Balances For Year Ending December 31, 2010

	Totals	General	Trust	Cash Donations
<b>BEGINNING FUND BALANCE</b>	<b>\$10,226,439</b>	<b>\$</b>	<b>\$10,126,161</b>	<b>\$100,278</b>
<b>INCOME</b>				
County Appropriation				
Salaries/Wages	17,485,214	17,485,214		
Other Expense Approp.*	1,679,098	1,679,098		
Revenue				
Donations	6,710			6,710
Golf Courses	9,058,628	5,831,634	3,226,994	
Parks	2,411,635	1,174,409	1,237,226	
Monmouth Cove Marina	812,284		812,284	
Visitor Services	2,139,208		2,139,208	
<b>Total Funds</b>	<b>\$33,592,777</b>	<b>\$26,170,355</b>	<b>\$7,415,712</b>	<b>\$6,710</b>
<b>EXPENDITURES</b>				
Personnel	18,251,077	17,175,025	1,076,052	
Operations	6,890,745	914,100	5,973,933	2,712
General Revenue Returned to Treasurer				
Golf Courses	5,831,634	5,831,634		
Parks	1,174,409	1,174,409		
<b>Total Expenditures</b>	<b>\$32,147,865</b>	<b>\$25,095,168</b>	<b>\$7,049,985</b>	<b>\$2,712</b>
<b>Excess (Deficit) in Revenues</b>	<b>1,444,912</b>	<b>1,075,187</b>	<b>365,727</b>	<b>3,998</b>
<b>ENDING FUND BALANCE</b>	<b>\$11,671,351</b>	<b>\$1,075,187</b>	<b>\$10,491,888</b>	<b>\$104,276</b>

### Capital Cash & Open Space Expenditures:\*\*

Site Improvements	\$6,945,875
Land Acquisition	12,441,411
Line Item Capital - Equipment (additional & replacement)	648,087
<b>Total</b>	<b>\$20,035,373</b>

Note:

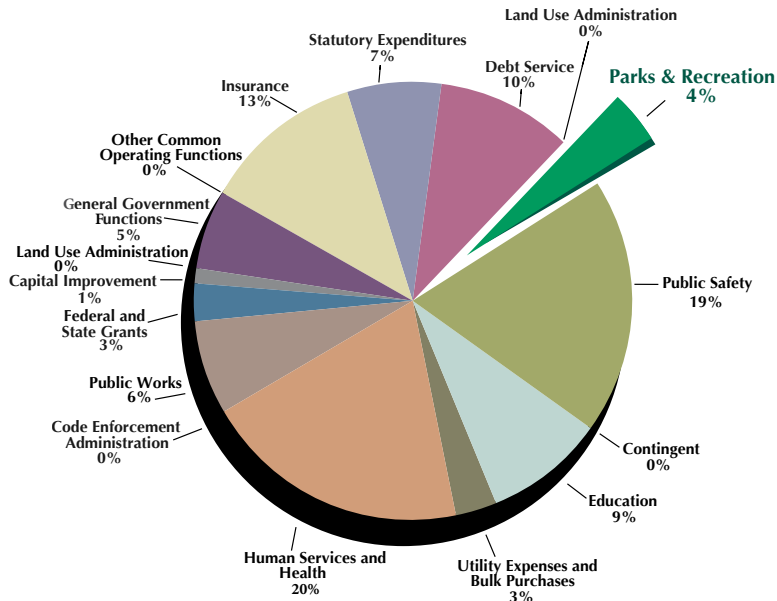
\* Funded by the Open Space Preservation Tax

\*\*Not included in above statement of expenditures

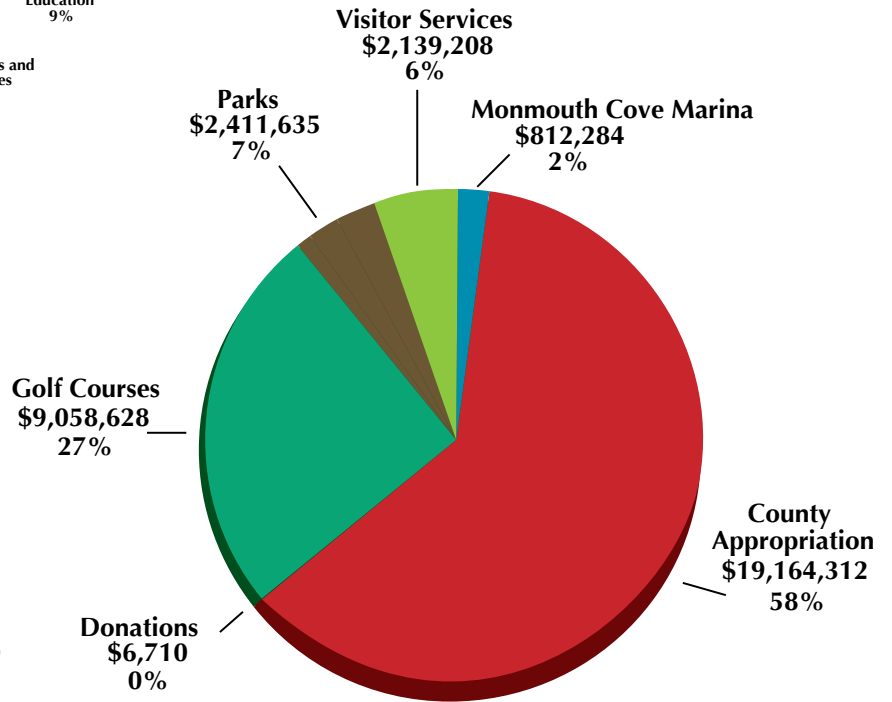
Capital items listed are not amortized

Appropriation does not include salary adjustments,  
fringe benefits, insurance, and legal services.

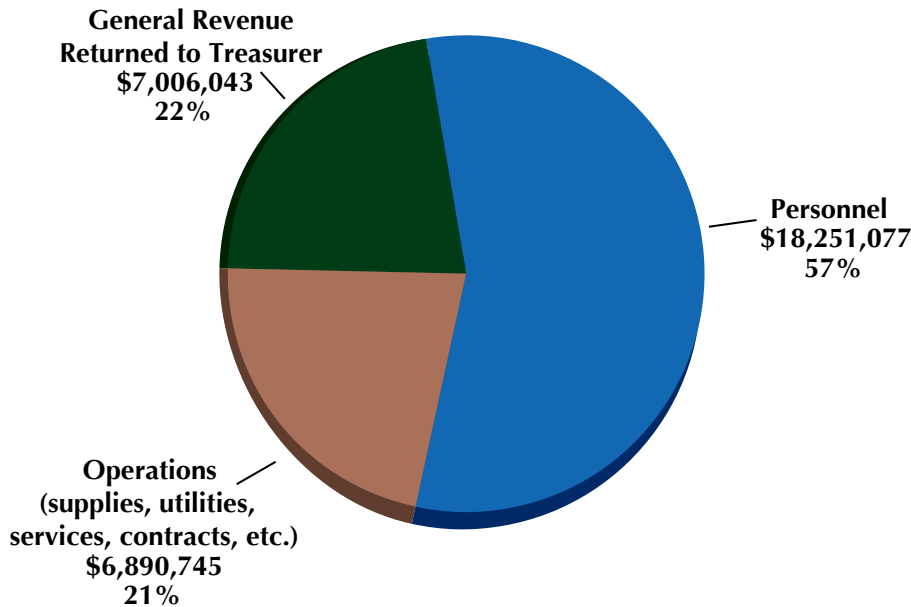
# 2010 MONMOUTH COUNTY BUDGET



## 2010 MCPS REVENUE BY SOURCE \$33,592,777



## 2010 MCPS EXPENDITURES \$32,147,865



## 2010 COUNTY PARK SYSTEM QUICK FACTS

### Land & Trails

Total Acres in Monmouth County.....	301,804
Total Acres in Park System*.....	15,030
Acres Acquired in 2010*.....	362
Largest Park (in Acres) – Turkey Swamp Park.....	2,173
Total Miles of Park System Trails.....	124
Acres Managed as Natural Fields.....	1,755

### Visitation

Population of Monmouth County†.....	633,080
Total County Park Visits in 2010.....	5,586,881
Park with Highest Visitation in 2010 – Manasquan Reservoir.....	1,101,651
Summer Visits to Seven Presidents Oceanfront Park.....	246,961
Visits to Park System Website.....	656,359
High School Teams using County Parks for home games.....	58

### Recreation Programs

Number of Recreation Programs Offered.....	4,242
Total Recreation Program Attendance.....	99,307
Urban & Community Recreation Program Participation.....	16,486
Monmouth County Fair Attendance (heatwave!).....	57,000

### Golf

Total Number of Golf Courses.....	8
Acres of Land in Golf Courses.....	1,705
Total Rounds of Golf Played in 2010.....	213,736
Individual Course with Most Rounds Played—Howell Park.....	35,018
Resident Golf ID Cards Sold.....	19,532

### Administration & Personnel

Full-time Staff.....	338
Hourly/Part-time Staff.....	352
Program Staff‡.....	176
Volunteers.....	903
Total Volunteer Hours.....	20,143

\*Excluding easements

†Monmouth County Planning Board 2010 Estimate

‡Estimate: Peak Season Average



## 2010 MONMOUTH COUNTY BOARD OF CHOSEN FREEHOLDERS



(l to r) John D'Amico; Amy A. Mallet;  
Deputy Director Robert D. Clifton, John P. Curley; and  
Director Lillian G. Burry (seated).

## 2010 MONMOUTH COUNTY BOARD OF RECREATION COMMISSIONERS



(front) Violeta Peters, Michael G. Harmon, Freeholder  
Director and Liason to the Park System Lillian G. Burry,  
Park System Secretary-Director James J. Truncer,  
N. Brit Raynor, and County Counsel Malcolm V. Carton.  
(back) Thomas E. Hennessy Jr., David W. Horsnall,  
Melvin A. Hood, Chairman Edward J. Loud, and  
Fred J. Rummel. (Kevin Mandeville, not pictured)

***Recreation is a human need,  
contributing to human happiness,  
essential to the well-being of  
people and as such, the public  
welfare is promoted by providing  
opportunities for wholesome and  
adequate recreation.***

Excerpt From: County Park and Recreation Policy for  
the County of Monmouth. Adopted by the Board of  
Recreation Commissioners, Oct. 8, 1991;  
Resolution No. R-91-10-8=261.



Headquarters for the  
Monmouth County  
Park System located at:  
805 Newman Springs Road  
Lincroft, NJ 07738  
732-842-4000  
[www.monmouthcountyparks.com](http://www.monmouthcountyparks.com)



The Nation's First Accredited Park and Recreation Agency



Printed on recycled paper  
using environmentally-friendly ink.