



CONTACT: Karen Livingstone
Communications
732-842-4000, ext. 4256
klivings@monmouthcountyparks.com

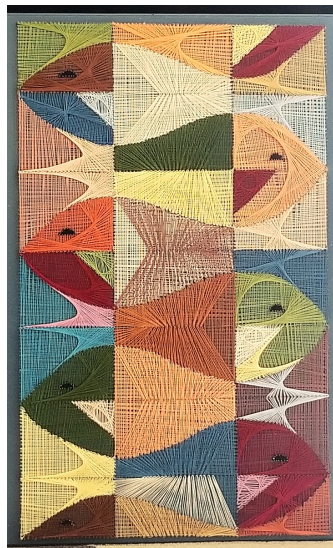
or

Patti Conroy
Visitor Services
732-842-4000, ext. 4247
pconroy@monmouthcountyparks.com

FOR IMMEDIATE RELEASE

Monday, August 2, 2021

MONMOUTH COUNTY PARK SYSTEM TO HOST ARTIST RECEPTION FOR ITS *GEOMETRIC EXHIBIT*



Artist – Ruth Carll

LINCROFT — The Monmouth County Park System is hosting an artist reception for its ***Geometric Exhibit***. Held at the Gallery in the Thompson Park Creative Arts Center, Lincroft, from 5-7 p.m. on Friday, August 6, this reception invites the public to meet local artists whose works are featured. From op-art to images of architecture, abstract paintings to natural geometry, the show highlights the power of shape, line, and angle in art and nature. The exhibit is open 12-4 p.m., Wednesday-Sunday, through August 29. Admission and parking are free.

To learn more information about the exhibit, the Thompson Park Creative Arts Center or the Park System, please visit www.MonmouthCountyParks.com or call 732-842-4000. For persons with hearing impairment, the Park System TTY/TDD number is 711. The Monmouth County Park System, created in 1960 by the Monmouth County Board of County Commissioners, is Monmouth County's Open Space, Parks, and Recreation agency.

#