



## **Monmouth County Park System Winter Run Farm Activity Center Rehabilitation, Manasquan River Greenway**

### **PROJECT INFORMATION**

---

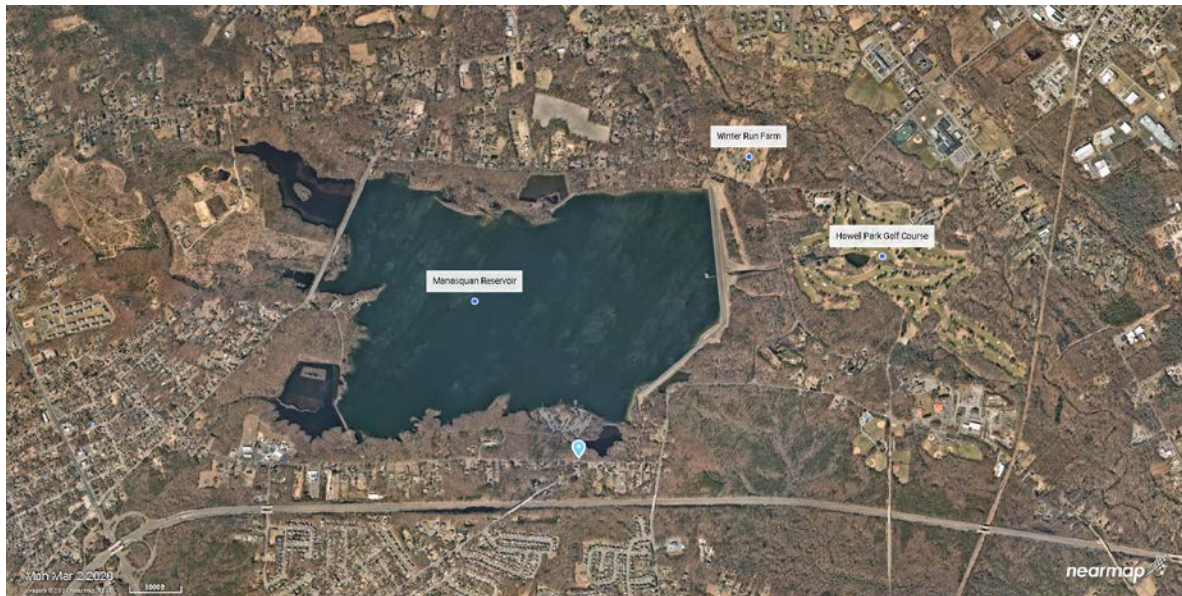
**PROJECT DESCRIPTION:** The Park System acquired a former horse farm on Southard Ave/Peskin Road adjacent to the Manasquan Reservoir and fronting the Manasquan River. In collaboration with the Rutgers Cooperative Extension and Monmouth County 4-H, the project will involve the upgrading of the former horse stables and tack room as a center for 4-H club activities and events as well as Park System programs. The project will include reconfiguration and renovation of interior spaces for the new use, new public restrooms, new electric service, new HVAC, accessibility improvements, new roof and siding. Trails connecting the site to the adjacent reservoir perimeter trail and along the river will be established. Non-functional and deteriorated buildings will be demolished.

**REASON FOR PROJECT:** The Monmouth County 4-H has identified the need for space to host club activities and events. With the acquisition of this horse farm and its well maintained stables, the Park System and 4-H determined that this would be an ideal location.

**DESIGN APPROACH:** Bring building up to code and functionality for public use; Accessibility. Meeting 4H requirements.

**PROJECT STATUS:** The entrance has been improved and a parking lot has been established. Architectural and engineering plans were completed for bidding in 2020, and bids were received on January 20, 2021. The construction contract was awarded on January 25, 2021 and work is in progress.

**CONTACT INFORMATION:** Andrew North, Chief Landscape Architect  
Monmouth County Park System, Acquisition & Design  
Department  
[Andy.North@co.monmouth.nj.us](mailto:Andy.North@co.monmouth.nj.us)



**Location**



**Former tack room to be converted to programming space**

