

June 14, 2023



Monmouth County Park System Cottage Renovations & Gazebo at Deep Cut Gardens

PROJECT INFORMATION

PROJECT DESCRIPTION:

The work includes rehabilitating the Cottage building and utilizing it for public programs. The project also includes constructing a gazebo adjacent to the parking lot to serve as a focal point and a covered shelter with seating and park information.

REASON FOR PROJECT:

The Cottage is prominently located within the park and is the only remaining structure from the Genovese era. With the completion of the new maintenance facility and relocation of park maintenance functions, the Gardener's Cottage can now to be renovated for public use in keeping with Deep Cut Garden's master plan.

DESIGN APPROACH:

Construct the facilities needed for programming functions while maintaining the historical elements of the building. Create an outdoor space in front of the building to be used in conjunction with the indoor ground level space.

ENVIRONMENTAL CONSIDERATIONS:

Storm water from the building roof will be collected and diverted to a subsurface drainage system that flows to a bio retention basin to recharge ground water.

PROJECT STATUS: The project has been awarded to Santorini Construction Inc. of Neptune, NJ for \$1,155,000.00. Construction is scheduled to commence in June 2023 with anticipated completion in December 2023. Visitors should expect some disruption in the construction area.

CONTACT INFORMATION:

Maryam Tronco, Architect Assistant
Monmouth County Park System, Acquisition & Design
Maryam.Tronco@co.monmouth.nj.us



Photo Above: Building #1402 Cottage

June 14, 2023

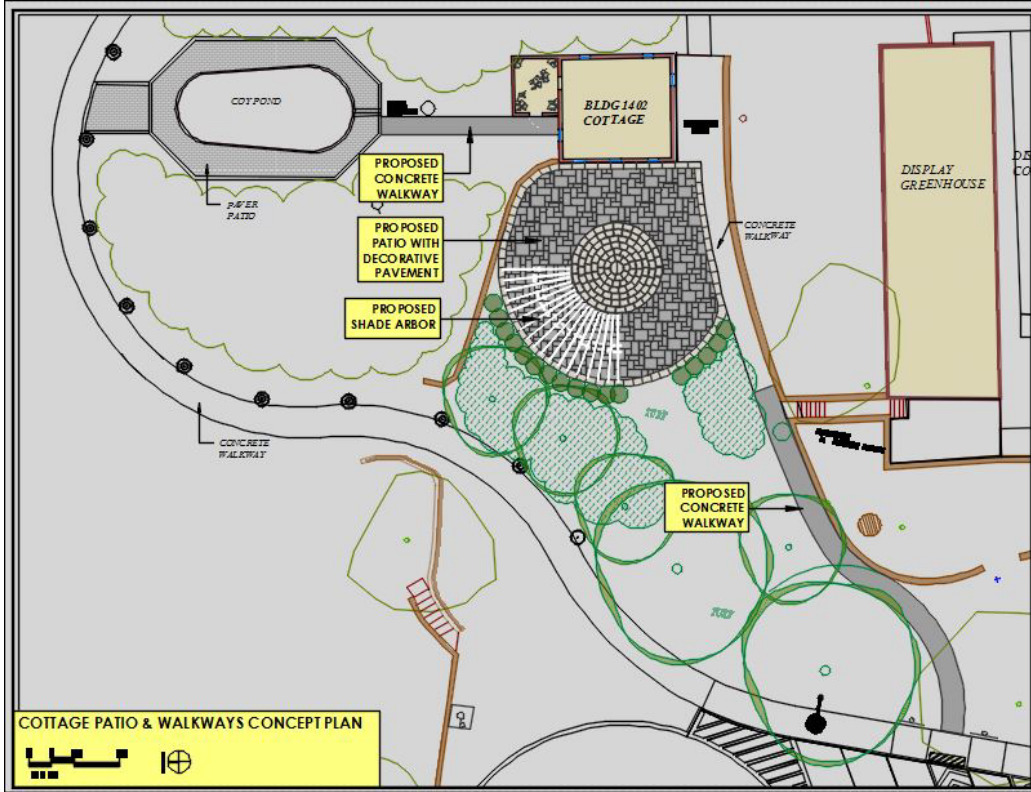


Photo Above: Cottage Patio Concept



Photo Above: Existing patio and future location of the Gazebo.