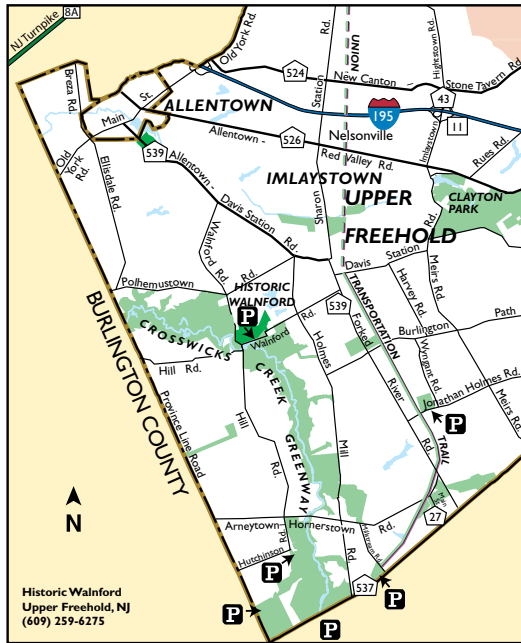


## PARK HOURS & INFORMATION

Historic Walnford is open every day of the year from 8am to 4:30pm (later in the summer), free of charge. The mill operates for weekend demonstrations, April – November. For information please call (609) 259-6275 or visit [www.monmouthcountyparks.com](http://www.monmouthcountyparks.com).



**From the North:** Take Rt. 9, 79 or 34 South to 537 west to Rt. 539 in Upper Freehold. Turn right onto Rt. 539, (Forked River Rd.), then left on Burlington Path Road. Turn right onto Holmes Mill Road and left on Walnford Road which leads directly into the park.

**From the East Via 195:** Take Exit 11 (Imlaystown/Cox's Corner) and turn left onto Rt. 43 (Imlaystown/Hightstown Road). At the first intersection (less than 1 mile) turn right onto Rt. 526/Red Valley Road. At the first light, turn left onto Sharon Station Road and follow for approx 2 miles and turn right onto Rt. 539 North. Travel for only a short distance and turn left onto Holmes Mill Road. Make first right onto Walnford Road which leads directly into the park.

**From the West:** Follow I-195 to Exit 8, Allentown, Rt. 524/539. Turn right and follow Rt. 539 through Allentown, turning left to stay on Rt. 539 in town. Follow and turn right onto Holmes Mill Road, follow to right onto Walnford Road which leads directly into the park.



Monmouth County  
Board of Chosen Freeholders  
Board of Recreation Commissioners



## Monmouth County Park System

# Historic Walnford

at Crosswicks Creek Greenway,  
Upper Freehold, NJ



[www.monmouthcountyparks.com](http://www.monmouthcountyparks.com)

## Welcome to Historic Walnford

*This 36-acre mill site is listed on the State and National Registers of Historic Places. Beginning in the 18th century, Walnford's evolving structures and landscape reveal much about the changing culture and economy of this region during the last three centuries.*



Waln's Mill, 1890s

### Commercial Center & Country Estate (18th C)

The village that grew on this site began in 1734 with a gristmill. A 1772 newspaper ad caught the eye of prosperous merchant trader and Philadelphia Quaker, Richard Waln. It offered three mills, blacksmith and cooper's shops, a large 2-family brick house, five tenant houses, farm buildings, 100 plowed acres and two orchards. He purchased the site, renamed it Walnford, and moved in with his family in 1773.

### Room Rentals/Weddings

This elegant site now has facilities available for meetings, programs & ceremonies. Please call (609) 259-6275

### Federal Merchant Farmer (early 19th C)

Son Nicholas Waln and bride Sarah Ridgeway Waln took charge of Walnford in 1799. Reaching its height of activity, the property grew to 1300 acres and the village expanded to house about 50 people.



Waln House, 1890s

### Shifting Focus, Declining Fortunes (late 19th C)

After Nicholas died, the two Sarahs—wife and daughter—maintained Walnford. But as agriculture and milling moved west, it diminished in both commercial importance and size. With fewer acres to manage, the Sarahs focused on the home, redesigning the front porch and installing decorative fencing and plantings.

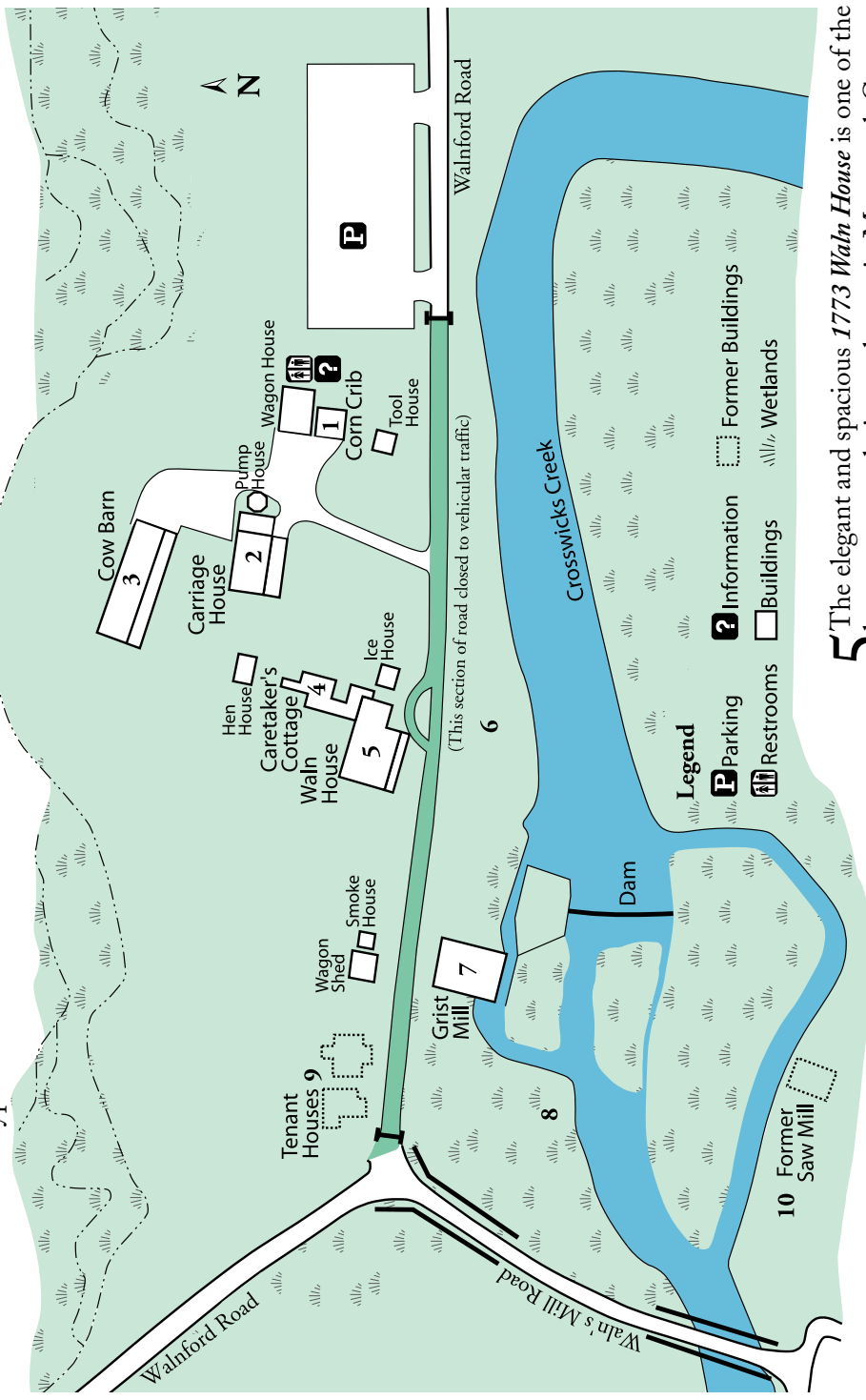
### Rural Retreat (20th C)

After the death of his great aunt Sarah Waln Hendrickson in 1907, Richard Waln Meirs and wife Ann Weightman Meirs transformed the property into the quiet Colonial Revival estate you see today. In 1973, after 200 years of occupancy by the Waln family, Edward and Joanne Mullen purchased the property as their home. They generously donated this historic site to the Park System in 1985.



# HISTORIC WALNFORD

62 Walnford Road, Upper Freehold, NJ  
(609) 259-6275 Walnford House  
(609) 259-5794 Ranger Station  
www.monmouthcountyparks.com



**1** Entering through the *Corn Crib* serves as a reminder that Walnford was a working farm until the middle of the 20<sup>th</sup> century.

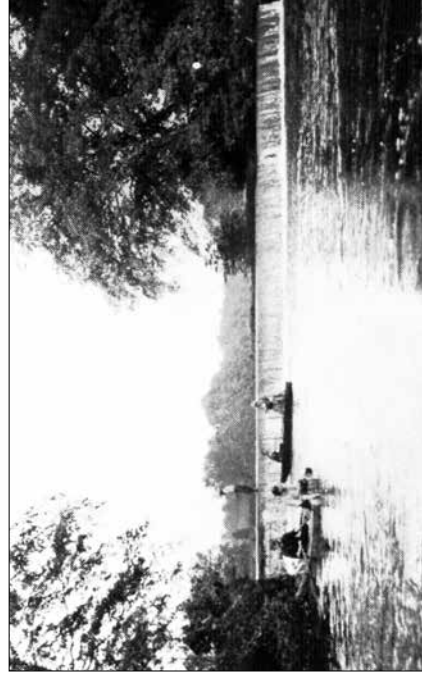
**2** The 1879 *Carriage House* was built for the Walns' carriages and the horses that pulled them. Look up to see the running stag weathervane.



*Carriage House, Today*

**3** In the early 20<sup>th</sup> century, dairy farming was popular in this area. Forty-eight Guernseys were milked here in the *Cow Barn*.

**4** The *Caretaker's Cottage* was added to the rear of the house in 1910-12. The White Pine trees separating the house and farm were planted around the same time, as Walnford was changing from a working farm into a country retreat.



*Mill Pond, 1890s*

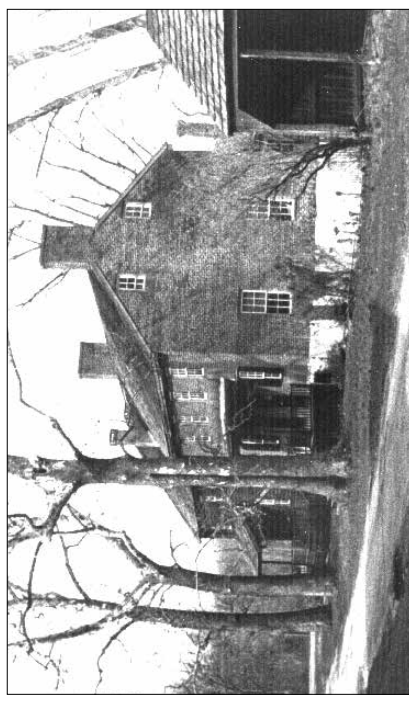
**5** The elegant and spacious *1773 Waln House* is one of the largest pre-revolutionary homes in Monmouth County.

**6** *Remnants of a Formal Garden* exist along the stream bank in front of the house. A horticultural enthusiast, Ann Weightman Meirs planted many of the ornamentals that give Walnford its picturesque character today.

**7** *Waln's Mill*, powered by a turbine rather than external water wheel, represented the peak of stone grinding gristmill design when it was rebuilt in 1872 after a disastrous fire.

**8** *Crosswicks Creek and the surrounding wetlands*, once a source of power for the mill and a scenic feature, are today an important resource and flood plain protected by state and federal law. The creek travels through four counties before it joins the Delaware River.

**9** Two 18<sup>th</sup> Century *Tenant Houses* were located here until 1969 when they were destroyed by arson.



*Tenant Houses, 1960s*

**10** Another important water feature and industry at Walnford was the *Saw Mill*, in operation on the opposite bank from Waln's Mill through the 1870s.

*The decision to interpret this site spanning the 200 years of Waln Family ownership acknowledges Walnford as an evolving story. Changing exhibits, demonstrations and programs are designed to encourage you to visit often, experiencing both the old and new at this important site.*