



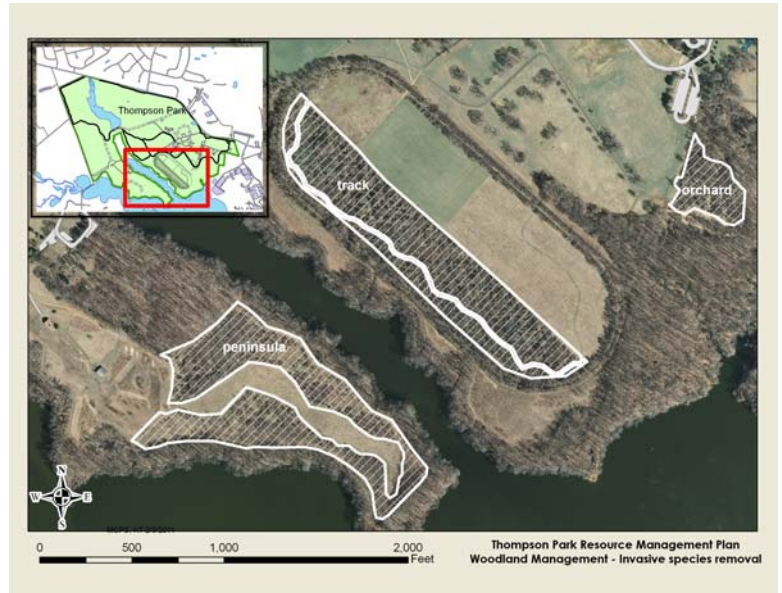
Thompson Park, Middletown Project Brief: Invasive Vegetation Management

Several projects are underway in Thompson Park to manage invasive species that displace native plant and animal species, degrade natural communities, and reduce natural diversity and wildlife habitat values. These projects will contribute to the protection and restoration of historic landscapes, improve habitats for wildlife species, and improve access for recreation and park views.

Project areas include the historic track and orchard, both parts of the original Thompson Estate, and the peninsula portion of Longbridge Rd annex, across the Marlu dam. Areas are being partially cleared using a combination of mechanical and chemical treatments. The intent is to establish an open 'park' landscape and restore something of the original agrarian landscape by removing poor quality trees and brush, retaining larger native trees and establishing an understory of grasses.

These improvements will provide habitat for birds that favor a more open landscape, such as indigo buntings, bluebirds, hawks, owls and a variety of other species. It also opens up an area for passive recreation which is now largely inaccessible.

It is anticipated that these projects will be multi-year, evaluated for effectiveness and adjusted accordingly. Long-term resource management goals are to establish and maintain a mosaic of habitat to include forested buffers to the Swimming River Reservoir and Marlu Lake, open woodlands, shrub lands and open fields including agricultural, warm season native grasses and cool season grassy fields.



Before (left) and after removal of invasive species (right).