



# Monmouth County Park System - 2017 County Open Space Plan



Presentation to the  
Residents of  
Monmouth County

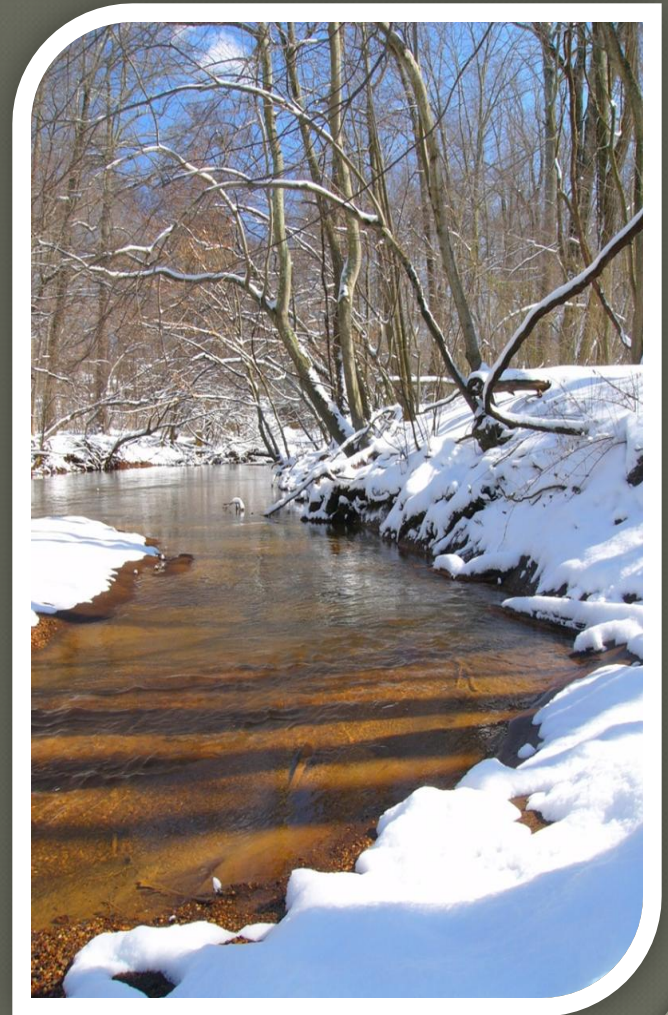


# Monmouth County Park System - County Open Space Plan

The last Open Space Plan was adopted in 2006 and it is time for a comprehensive review and drafting of a new plan for open space protection in the County.

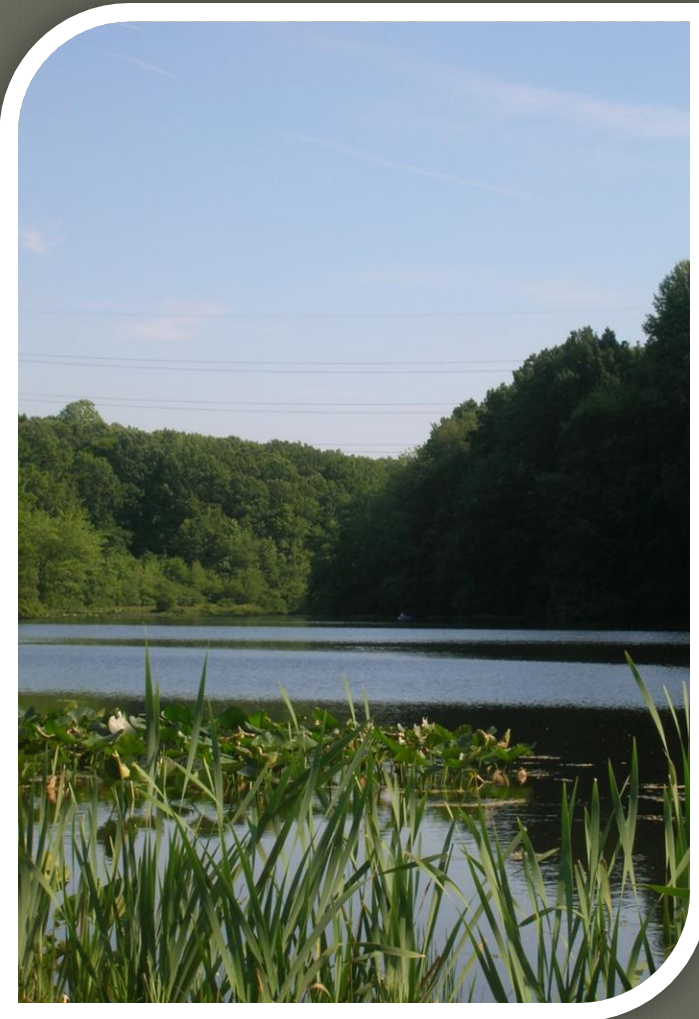
The 2006 Open Space Plan had three principal purposes:

- To establish the direction and priorities for the land preservation program of the MCPS.
- To communicate the Park System's vision for open space preservation to other agencies and the public.
- To satisfy the statutory requirements of N.J.S.A 40:12-15.2 governing "County Open Space, Recreation and Farmland and Historic Preservation Funds."





# Monmouth County Park System - County Open Space Plan



The goal of the 2006 Monmouth County Open Space Plan, which will continue in the 2017 Plan:

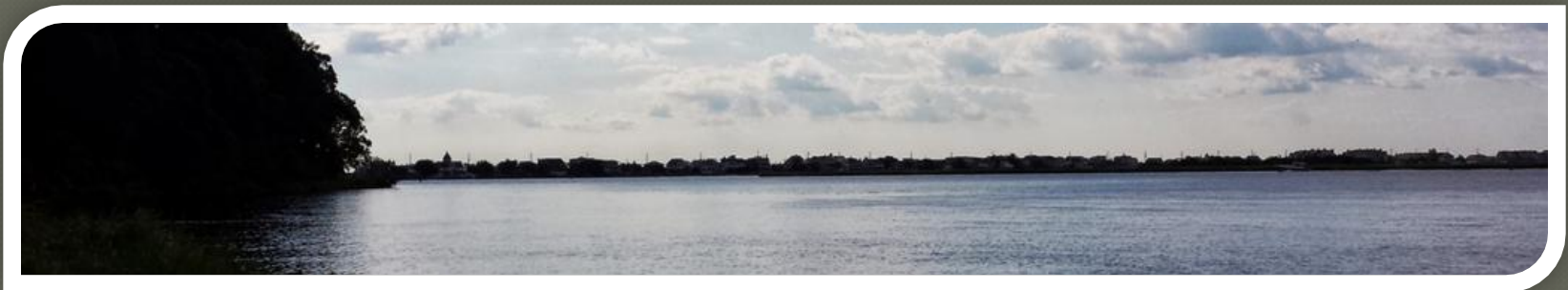
To permanently preserve public land of county significance to support future regional conservation and recreation needs throughout the county. This land should form an integrated system of open space that is sufficiently diverse and comprehensive to protect the significant natural and man-made landscapes that have defined Monmouth County in past generations and to provide a wide range of resource-based recreation opportunities for current and future generations.



# Monmouth County Park System - County Open Space Plan

Policy Statement #1 – MCPS will concentrate its resources on meeting its responsibilities and obligations as a regional provider of public open space and shall work to encourage others in the fulfillment of their roles and responsibilities.

- **Federal Government** to preserve and manage nationally significant natural, cultural, and historic resources.
- **State Government** to preserve and manage natural, cultural, and historic resources of statewide significance.
- **County Government** to preserve and manage large tracts of land which have countywide significance, which support resource-based recreation, which include large park spaces which are accessible to and able to serve a great number of people from throughout the county.
- **Municipal Government** to meet the day-to-day community-based and neighborhood recreation needs of local residents





# Monmouth County Park System - County Open Space Plan

In order to assist municipalities in meeting their Open Space goals, the Monmouth County Municipal Open Space Grant Program was created to help municipalities in meeting the day-to-day community-based and neighborhood recreation needs of local residents. Since the inception of the MCMOSGP in 2003 187 grants have been awarded.

- 135 - parks development projects (72%)
- 52 - open space acquisition projects (28%)

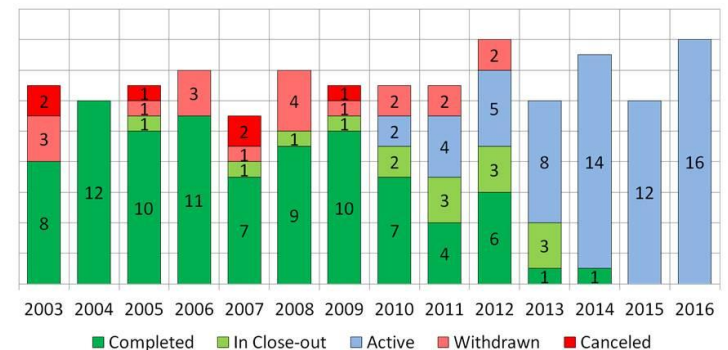
- 47 of the County's 53 towns have been awarded more than \$28 million for local park acquisition and development projects.

- Funds up to 50% of project costs
- 75% in Urban Aid Communities
- Limited to \$250,000 per project.



## Monmouth County Municipal Open Space Grant Program

Grant Program - Project Status – 03/20/17





# Monmouth County Park System - County Open Space Plan

Policy Statement #2 – MCPS shall acquire sufficient public parkland to eliminate short-term and long-term parkland deficits and preserve critical resources of county significance.

## ◎ 2006 Benchmarks

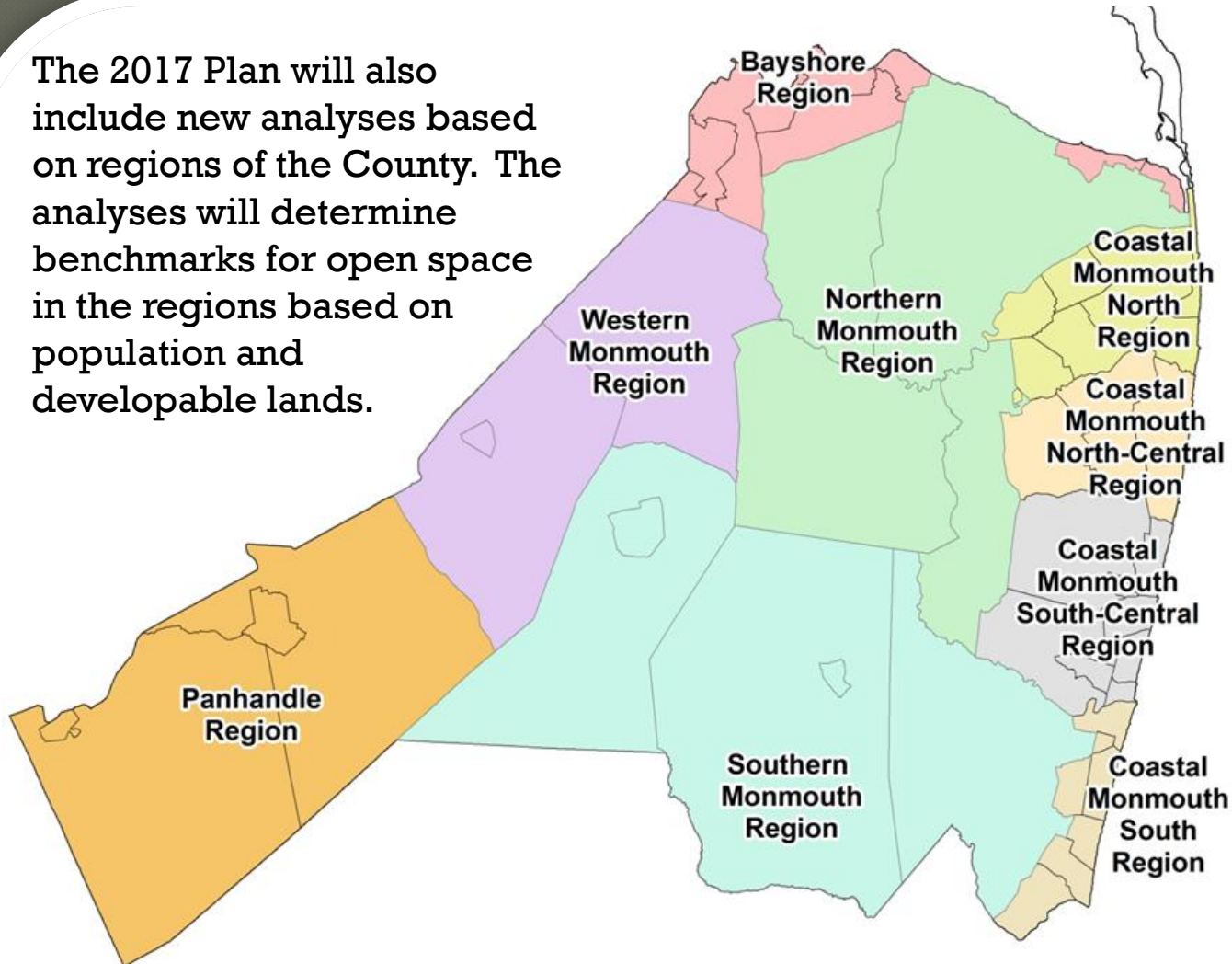
- **Balanced Land Use Guidelines - long-term goals** recommend that 3% of the developable area of the municipality be acquired for municipal-level public recreation, and that 7% of the developable area of the county be acquired for county-level public recreation. - **UPDATE ANALYSIS - 2017**
- **Acreage per Population Guidelines - short-term goals** based on the actual population are 12 acres per 1,000 persons for the County and 8 acres per 1,000 persons for municipalities. - **UPDATE ANALYSIS - 2017**





# Monmouth County Park System - County Open Space Plan

The 2017 Plan will also include new analyses based on regions of the County. The analyses will determine benchmarks for open space in the regions based on population and developable lands.





# Monmouth County Park System - County Open Space Plan

2006 Action Plan included:

- Advocacy - encourage municipalities to develop open space plans & acquire lands; encourage linkages; work with partners
- Stewardship - manage, design, and improve parks to protect valuable resources; promote public awareness; budget for operations in proportion to the acquisition of additional land
- Acquisition - conservation & recreation value; geographically balanced park system; Park System Lands Classification System; expand current parks; new parks in densely populated areas; recreation sites in underserved areas; public access to water; county wide trail network



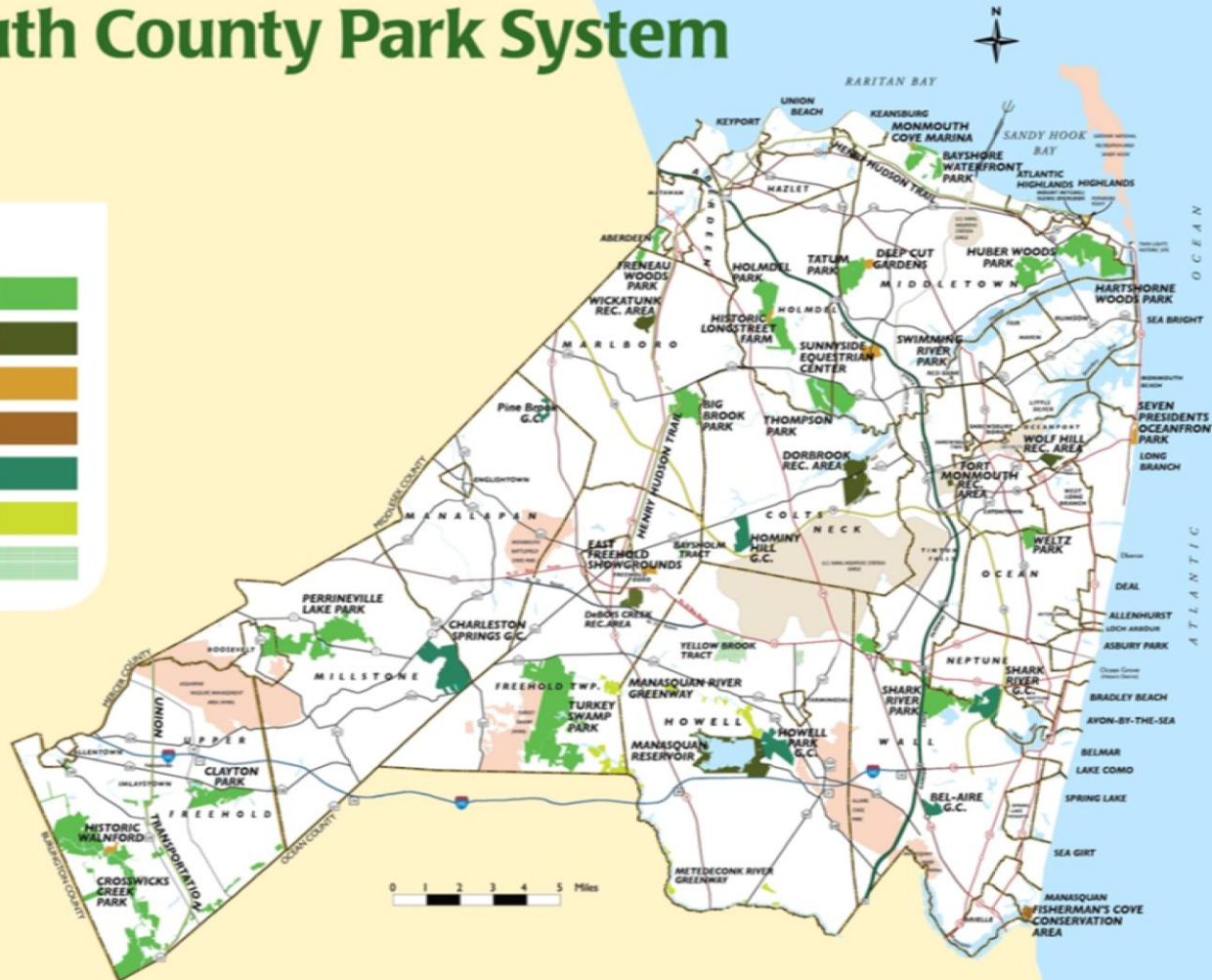


# Monmouth County Park System - County Open Space Plan

## Monmouth County Park System Park Sites

### LEGEND

- Regional Parks
- Recreation Areas
- Special Use Areas
- Conservation Areas
- Golf Courses
- Greenways
- Open Lands

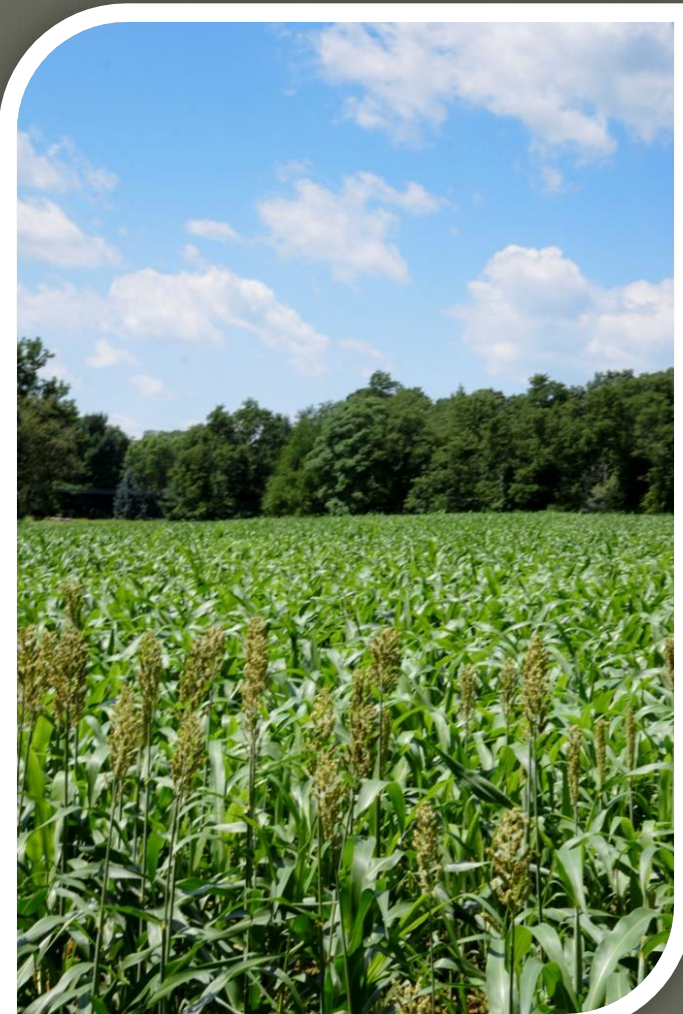


0 1 2 3 4 5 Miles





# Monmouth County Park System - County Open Space Plan



2017 Action Plan to include new items:

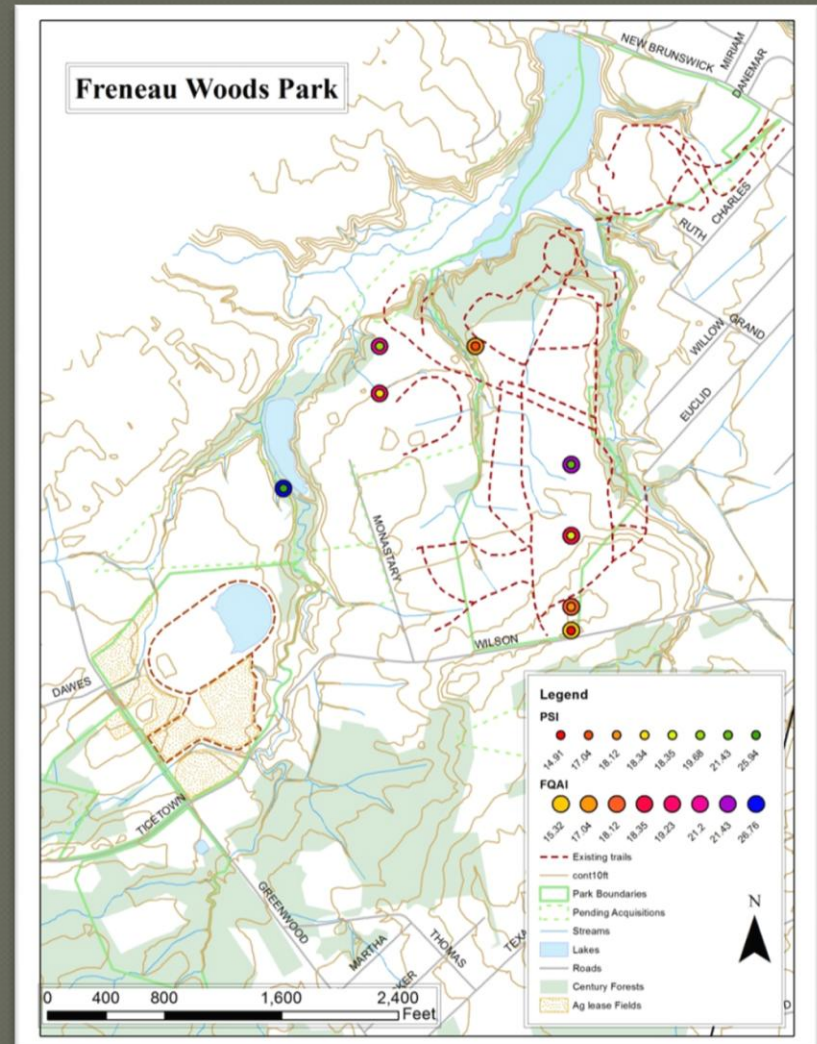
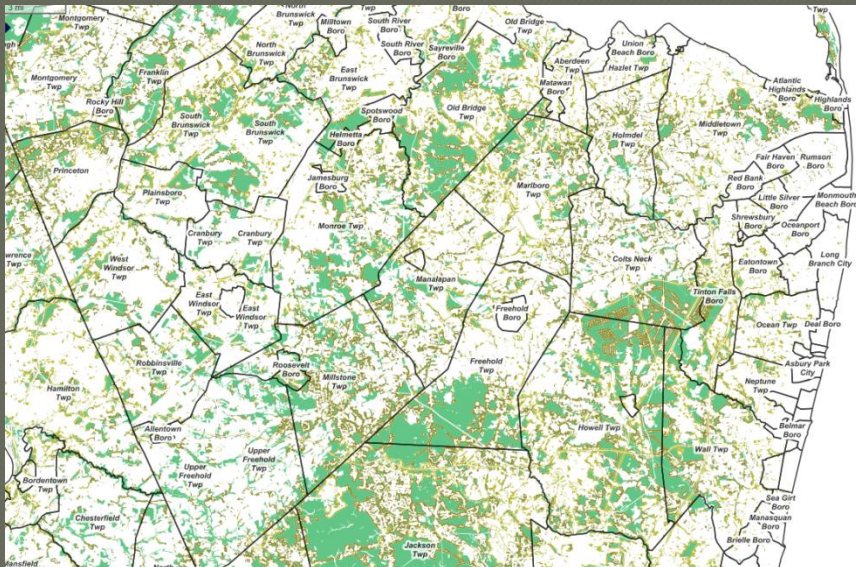
- ◎ Ecology – Habitat areas and species specific habitats; century forests; water supply headwaters; surface water quality and potable water supply areas
- ◎ Connectivity – bike & pedestrian access; parks connections; ADA accessibility; proximity to NJ transit
- ◎ Equity – consistent regional acquisition; aging population analysis
- ◎ Resiliency/Sustainability – hazard mitigation; flood prone areas; sea level rise
- ◎ Historic Preservation – MCPS Role and Responsibility



# Monmouth County Park System - County Open Space Plan

## Ecological Services Mapping

- Habitat areas & species specific habitats
- Century forests
- Headwaters of surface water drinking supply reservoirs
- Ground water re-charge areas

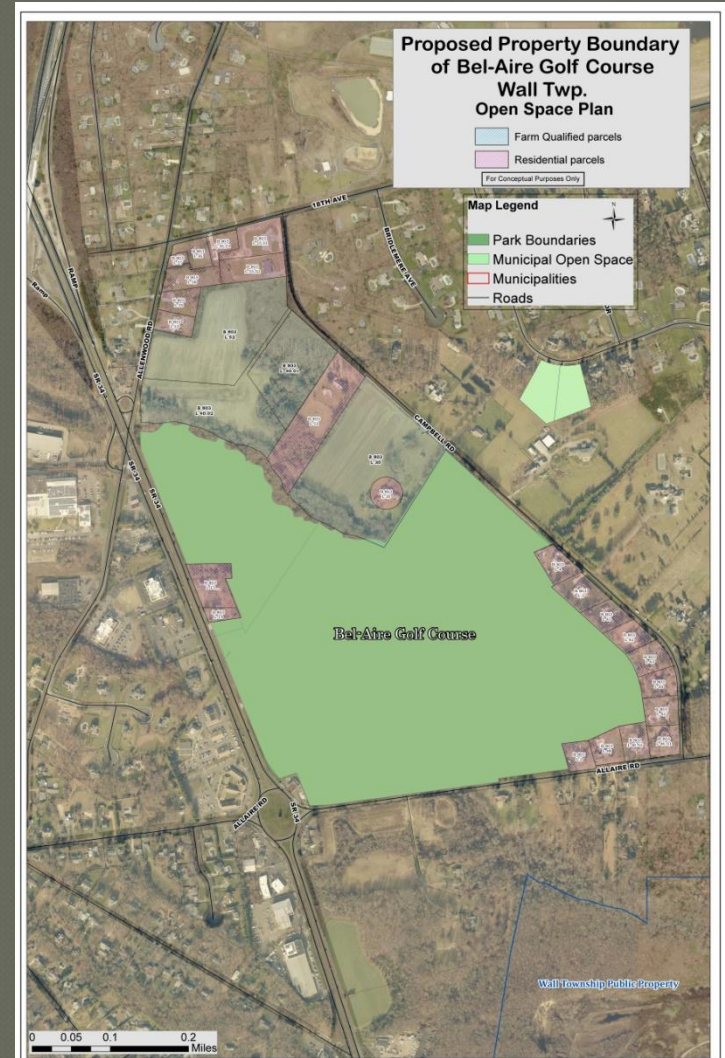
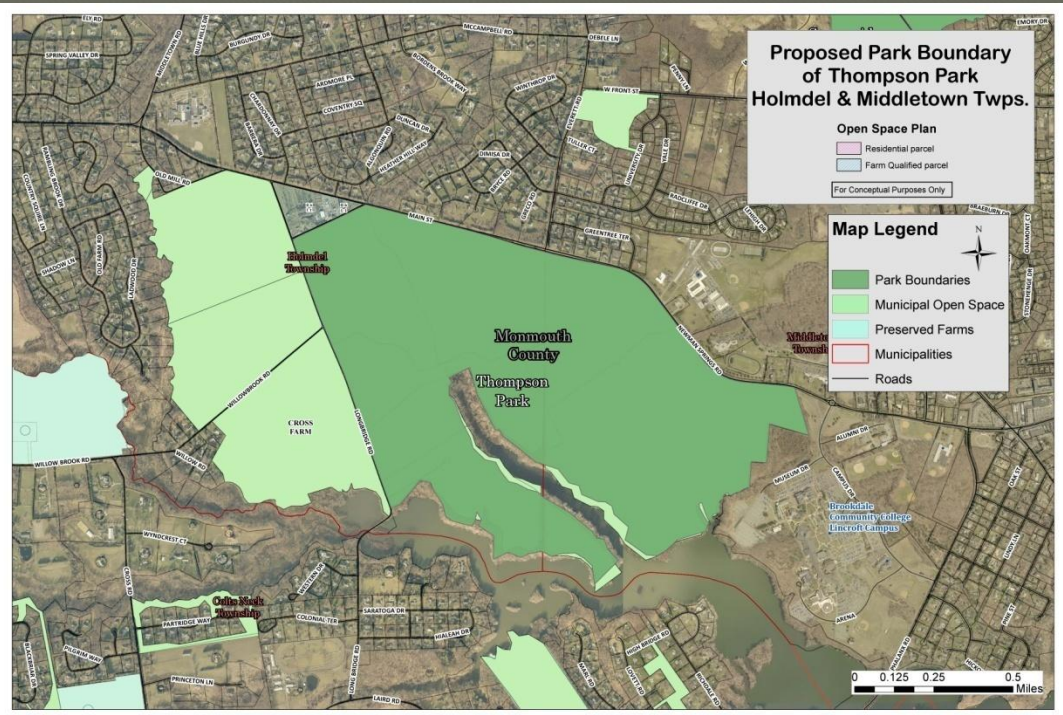




# Monmouth County Park System - County Open Space Plan

## Acquisition Priorities Work Group

- Park by Park Analysis
- Roadway or natural features boundary
- Parcels along stream corridors





## Monmouth County Park System - County Open Space Plan

The final element of the 2006 Open Space Plan was a list of acquisition priorities identified by location. This formed the priority list for the MCPS Land Preservation staff and represents most of the 3,500 acres of properties that have been added to the Park System since.

The 2017 Open Space Plan will include a new list of acquisition priorities. This will continue to be used by MCPS Land Preservation staff for the next round of acquisition. The Land Preservation priorities will reflect the new priorities identified in the Action Plan.





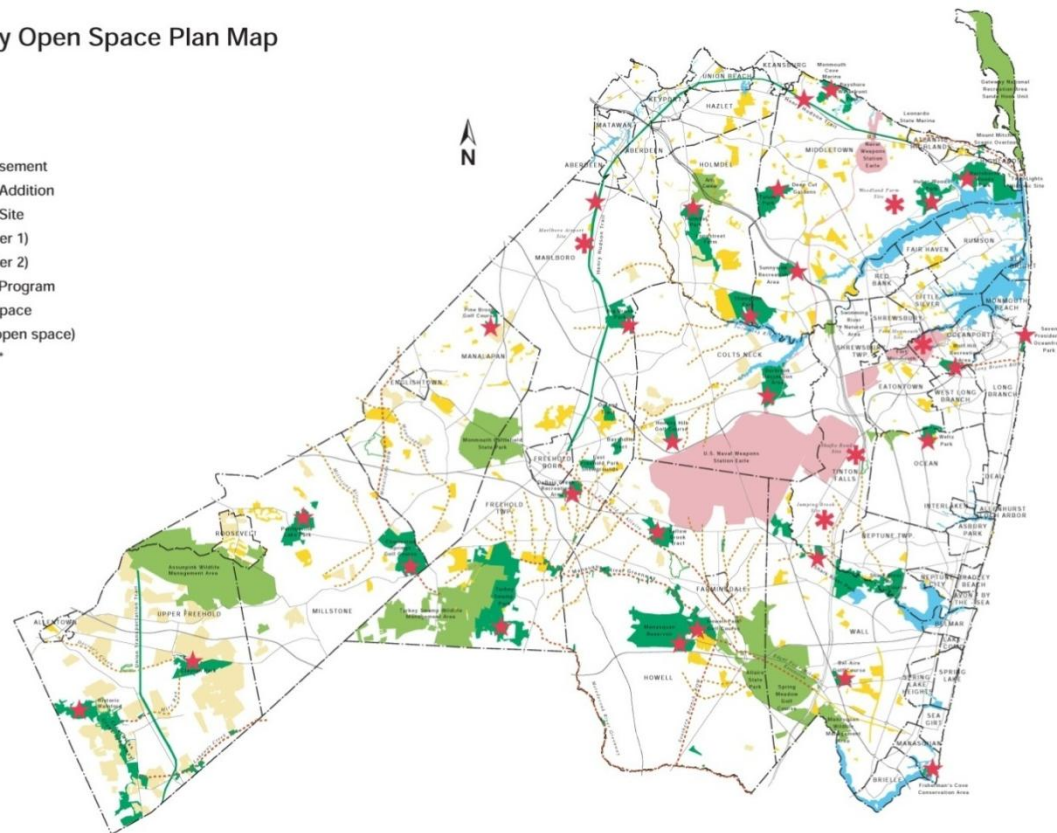
# Monmouth County Park System - County Open Space Plan

There was only one map included in the 2006 Monmouth County Open Space Plan. The new 2017 Plan will include mapping on the county wide, regional, and municipal levels.

Monmouth County Open Space Plan Map

Legend

- County Open Space
- County Open Space Easement
- Proposed County Park Addition
- Proposed County Park Site
- Proposed Greenway (Tier 1)
- Proposed Greenway (Tier 2)
- Farmland Preservation Program
- Federal & State Open Space
- Federal Property (non-open space)
- Municipal Open Space \*



\* Municipal Open Space data layer is incomplete as digital data was not available from all municipalities.

This map contains digital data provided by the State of New Jersey and Monmouth County. Unauthorized duplication is prohibited.



# Monmouth County Park System - County Open Space Plan

## Municipal Outreach Questions - All 53 Municipalities

- Existing Preserved Open Space - All Ownership
- Known OS/Farmland Preservation Targets – All owners
- Do you have an existing inventory of prospective acquisitions?
- How does the town see itself in relation to the County Park System?
- Does the town recommend any additions to the County Park System?
- What cooperative projects should the town and County pursue?
- How can we link our trail systems?
- Do we have any land we should swap/buy/sell?
- Should we develop cooperative habitat management plans?
- Do you have GIS data such as open space, recreation, farmland, circulation, affordable and age restricted housing?
- Do you have an official ROSI list?
- Are there any shuttles available to the parks?
- Do you participate in safe routes to school?



# Monmouth County Park System - County Open Space Plan

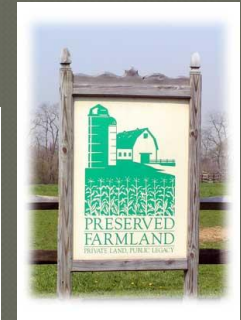
## County Outreach

- Farmland Preservation
- Planning Board Staff
  - Transportation Council
  - Environmental Council
- Engineering
- Economic Development

## County Approval

- Board of Recreation Commissioners
- County Planning Board
- Board of Chosen Freeholders

MONMOUTH COUNTY 20  
MASTER PLAN 16





# Monmouth County Park System - County Open Space Plan

## Non-profits & Government partners

- Monmouth Conservation Foundation
  - Local Non-Profits Forum
- Friends of Monmouth County Parks
- D&R Greenway
- Audubon, American Littoral, Bay Keeper
- NJRPA
- National Park System - Gateway National Park - Sandy Hook Unit
- NJ State Parks –Allaire, Assunpink, Turkey Swamp, Monmouth Battlefield, Twin Lights
- Naval Weapons Station Earle
- NJDEP Green Acres

