

# Monmouth County Shade Tree



VOLUME 2 ISSUE 2

SUMMER 2008

### Special Points of Interest:

- Tree City USA  
2nd year Recognition
- 2008 Gypsy Moth Situation
- Frequently asked questions
- Scientists Trying to Revive the American Chestnut

**Monmouth County named 'Tree City USA' – 2<sup>nd</sup> year in a row!**  
*National Arbor Day Foundation cites county's commitment to forestry program*

FREEHOLD – The National Arbor Day Foundation has once again designated Monmouth County as a Tree City USA in recognition of the county's ongoing community forestry program.

In addition, the county received the Tree City USA Growth Award for demonstrating progress in its community forestry program in the following areas:

- Education and public relations
- Tree-worker safety program
- Continuing education for tree managers
- Tree care workshop



“The prestigious Growth Award recognized environmental improvement and higher levels of tree care in Tree City USA communities,” said John W. Tobia, director of the county's Department of Public Works & Engineering, which comprises the Monmouth County Shade Tree Commission.

### Inside this issue:

<b>2008 Gypsy Moth Spray Program</b>	2
<b>F A T –Q's</b>	2
<b>Trying to Revive The American Chestnut</b>	3
<b>Waste is a Terrible Thing to Waste</b>	4
<b>Arbor Day Celebration</b>	5
<b>Kids Corner</b>	5
<b>Big Tree Big Work</b>	6
<b>Acknowledgement of Service</b>	6
<b>Monmouth County Shade Tree Saves Landscaping</b>	7
<b>Consider these Upcoming Events</b>	7
<b>Informational Sites and Sources</b>	8



The county's community forestry program is rooted in the Shade Tree Commission, which is responsible for overseeing care and maintenance of the county's many trees. The commission comprises five appointed voluntary members and employs a full compliment of 32 staff members.

Monmouth County was the first county in the state and only the 17th in the country to receive a Tree City USA designation last year.

“We are delighted to once again receive the Tree City USA designation,” Freeholder William C. Barham said.

“The county's beauty is evident in our county parks, public gardens and arboretum. We share this award with residents in all 53 municipalities, because they also pride themselves in their local parks, well-manicured gardens and tree-lined streets.”

The Tree City USA program, sponsored by The National Arbor Day Foundation in cooperation with the USDA Forest Service and the National Association of State Foresters, provides direction, technical assistance, public attention, and national recognition for urban and community forestry programs in thousands of towns and cities that more than 93 million Americans call home.

Gaining Tree City USA recognition is an award to the tree workers, managers, volunteers, tree board members and others who work on behalf of better care of a community's trees.

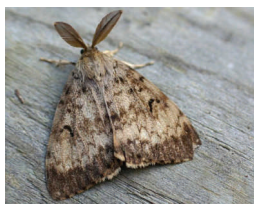
The Monmouth County Shade Tree Commission installs many trees, plants and/or shrubs per year, which improve the visual aesthetics of the county's roadways. Workers also survey and remove hazardous trees and prune thousands of others. The staff also provides technical information to municipalities on proper tree selection, placement and care.

“Residents, too, can take pride in the fact that Monmouth County is a Tree City USA destination,” Barham added. “Being a Tree City USA helps present the kind of image that most people want to have for the place they call home.”

## 2008 Gypsy Moth Spray Program

We are pleased to announce that the Gypsy Moth Egg Mass Spray Program has been completed. The total acres sprayed by town were:

- 1 Freehold Twp.: 2,972 acres
- 2 Howell: 2,169 acres
- 3 Millstone Twp.: 864 acres
- 4 Earle: 600 acres
- 5 Wall: 709 acres
- 6 Colts Neck: 284 acres
- 7 Tinton Falls: 140 acres
- 8 Marlboro: 70 acres



Adult male gypsy moth  
Wikipedia Encyclopedia



Monmouth County Shade Tree Helicopter

Approximate totals for the State: 2,366 acres  
 Approximate totals for the County: 5,442 acres  
 Approximate Total: 7,808 Acres

The County will be conducting a gypsy moth egg mass count beginning at the end of September. An aerial inspection of reported gypsy moth defoliation damage will start the end of June into July. These inspections will also analyze the amounts of suppression the gypsy moth program had. If you are having problems with a gypsy moth infestation, please contact our office at 732-431-7903 or [e-mail us](#) through this web site to be included on our survey list.

The Monmouth County Shade Tree Commission is located at 4000 Kozloski Road, Freehold, NJ.

## Frequently Asked Tree Questions

**Question: What are these moths flying around?**

**Answer:** They are the male Gypsy moth looking for a mate to fulfill their life cycle with. The females are white and do not fly, but are stationary on the tree they emerged on.

**Question: Will they do damage to my trees?**

**Answer: NO!** The moths do not eat during this time of their life cycle. Most of the damage is done when the larvae or caterpillars are feeding and growing.



Female moth laying eggs

**Question: What do the egg masses from the female look like? - and when can I remove them?**



Egg mass

**Answer:** Pictures of the moths and the egg masses are on this page for ID purposes. Please do not remove the egg masses from the trees or your home until after the “egg mass survey” is completed in the fall. For more information on removal and disposal of egg masses see our web-site. [www.visitmonmouth.com/shadetree](http://www.visitmonmouth.com/shadetree)

**Question: How do I get an egg mass survey at my house?**

**Answer:** If you see the moths flying around, have egg masses on your property and had defoliation in the spring you should contact our office and place your address on our survey list for the fall.

## SCIENTISTS TRYING TO REVIVE AMERICAN CHESTNUT



**American chestnut today.**

(The American Chestnut Foundation Photo)

Under a spreading chestnut-tree  
The village smithy stands;  
The smith, a mighty man is he,  
With large and sinewy hands;  
And the muscles of his brawny arms  
Are strong as iron bands.

—The Village Smithy, by Henry Wadsworth Longfellow

The village smithy may not make a comeback anytime soon but the American Chestnut—once the king of eastern forests—may soon reclaim its throne thanks to the Monmouth County Shade Tree Commission and The American Chestnut Foundation.

For the past two years the Monmouth County Shade Tree Commission working with The American Chestnut Foundation has been involved in a program that is trying to preserve the American Chestnut tree by assisting in the cross pollination of the Chinese Chestnut and the last remaining American Chestnuts in the Monmouth County area.

The American Chestnut Foundation has found a number of large surviving chestnuts, particularly in Hartshorne, Holmdel and Tindall Parks that, though infected with blight, are managing to survive. The size and number of these trees is very uncommon and we are using them in breeding programs to both develop a blight resistant American Chestnut through crossing with its blight resistant Asian cousins and to preserve existing populations in Monmouth County.

In June, when American Chestnuts begin to flower, we pollinate a portion of the flowers with pollen from selected Chinese trees to produce first generation hybrids (called F1s). We have primarily been using trees in

Tindall and Holmdel Parks for this. The Monmouth County Shade Tree Commission's commitment, equipment and personnel is vital to this work. Our bucket trucks with a reach of just over 70' can reach the flowers of the large trees to pollinate and hopefully produce genetically superior seeds.

The hybrid seeds are sent to The American Chestnut Foundation where they are grown and the offspring tested for blight resistance and form. The best specimens are then crossed back to American Chestnuts for several generations, with only the most blight resistant trees kept in the program.

Preserving the form is also important because the Asian Chestnuts do not have the size or timber form of Americans, but are orchard type trees with lower, spreading branches. These could not compete in the American forest with the other tall specimens.

In addition to the hybrid seed, we harvest pure American seed to preserve the germplasm of our trees. Some we send to the American Chestnut Foundation and some we plant locally.

This year, pure American Chestnut local seed, from the 2007 harvest was used to plant a small orchard in Deep Cut Park and several seedlings were also sent to Manasquan Reservoir Park. Pure American and F1 seed from our harvest was also sent to the New Jersey State Forest Nursery in Jackson.

In 2008, we have pollinated the Tindall Park tree with Chinese Chestnut pollen. Because there are several flowering trees in that park, we will also obtain pure American Chestnut seed there.

During the 1800's the American Chestnut was one of the most widespread and useful tree species east of the Mississippi River. Chestnut blight was discovered in America in 1904 and by 1950 it was all but eradicated. More than 3 billion trees died. Forestry scientists at the State University of New York in Syracuse are now exploring a different idea: that genes from other plants, and even from animals, might provide the chestnut with completely new weapons to thrive again in the Eastern forests. The technology they are using is genetic engineering. Their plan is to make a transgenic chestnut with genes that inhibit the growth of the fungus.

## WASTE IS A TERRIBLE THING TO WASTE

Biomass is regenerative organic material made from plants and animals used for energy production. Biomass contains stored energy from the sun. The most common form of biomass is wood. When wood is burned, the chemical energy in biomass is released as heat, which produces steam for making electricity, or to provide heat to industries and homes. Forests are full of biomass, a renewable source because we can always grow more trees. In the past, loggers would cut down trees, and take the trunks to the sawmills and pulp mills, and leave the tree tops and branches on the ground to rot and feed the soil, to support the next generation of trees. With the price of gas and other fossil fuels going up, people are starting to use forest biomass to produce electricity.

Leaders in the timber industry realize that burning mill waste and logging debris, which formerly had gone to waste, can reduce the cost of thinning the millions of acres of national forest at high risk of catastrophic wildfire. Wildfires impose enormous public and private costs. Severe wildfires can alter the amount of nutrients, sediment, and organic debris delivered to streams and can increase erosion and runoff because of less water absorption by the soil and lower vegetative uptake of soil water. Altered watersheds that no longer provide the normal quantity or quality of water impose hardship and cost on the region. Dead branches and even young trees provide fuel for forest fires.



© 1997 by The American Society of Mechanical Engineers

The benefits of using wood biomass materials for energy are many:

It is **Renewable**. Utilizing the principles of scientific forest management our forests can provide a continuous and sustainable yield of wood biomass. Biomass systems also can utilize tree trimmings, industrial waste wood, and wood from demolition and construction wastes, materials that are currently burdening our landfills and waste systems.

It is **Clean**. Biomass use reduces the buildup of greenhouse gases and can also have a positive effect on gases in the atmosphere that cause acid rain and are damaging to human health.

It is **Economical**. It reduces the use of nonrenewable fuels, less dependency on foreign fuels, stabilization of income in rural areas, and reduced carbon dioxide emissions to the atmosphere. Also, harvest of wood for fuel may aid in improving forest health where there are attacks of insects or disease. With limited technological advances and current trends in fossil fuel prices, wood energy use in the United States is projected to increase 39 percent by the year 2040. Wood biomass may well play a greater role in energy production in the future.



*Built in Värnamo, Sweden, in 1993, the first plant to demonstrate the biomass integrated gasification combined cycle had a total efficiency of 82 to 83 percent and an electrical efficiency of 33 percent*

## ARBOR DAY CELEBRATION



David Robbins, Assistant Superintendent Monmouth County Shade Tree, addresses the Spring Lake Heights Elementary School during the 2008 Arbor Day event.



The Monmouth County Shade Tree Commission celebrated Arbor Day this year by providing assistance to the Spring Lake Heights School on April 25, 2008. The Shade Tree Commission provided the trees, labor, mulch, and educational books for the students to cultivate their knowledge and awareness of Arbor Day. On this day, the Monmouth County Shade Tree commission had an opportunity to thank the local town for its special efforts, and to show our appreciation for those who have enhanced the community and brought more attention to Arbor Day and helping the environment.

It was a great honor for the Monmouth County Shade Tree Commission to assist these students and their communities by providing the trees and services. A White Oak tree was planted at the Community Center, to replace one that had been removed for insect problems. In addition, there was a ceremony commemorating these efforts shared by this group of caring individuals, communities, and agencies.

The Monmouth County Shade Tree Commission also provided free seedlings to Red Bank Middle School and the master gardeners for Earth Day and Arbor Day celebration.

## KIDS CORNER



"How can you identify a dog-wood tree?" (By it's bark!).

"What did the tree wear to the pool party?" (Swimming trunks!).

"Why didn't the tree want to play checkers?" (Because it was a chestnut!)

"How do you get close to a squirrel?" (Climb in a tree and act like a nut!).

## BIG TREE BIG WORK



Monmouth County Shade Tree workers take down a hazard tree along the CR#524 in Farmingdale. The tree posed an immediate threat to the home, utility wires and roadway at the specific location.

When the tree was cleared from the wires by the utility company, large equipment such as bucket trucks with a 70+ft reach, large front end loaders, many dump trucks and forestry bodies filled with loads of wood, chips and debris were used to remove the large oak.

The skill and techniques used in taking on this behemoth job came from the many years of experience that is on the crews handling this job which was assisted by the Highway Department and their equipment operators, without any incident.

## ACKNOWLEDGMENT OF SERVICE

Bill Porter gives Arlene Stump, the out-going Chairperson of the Monmouth County Shade Tree Commission, a fond farewell. She is retiring after 21 years of serving on the board. They are standing next to the Kousa Dogwood tree, planted in recognition for her service and dedication.



## MONMOUTH COUNTY SHADE TREE SAVES LANDSCAPING

During the early summer, the expanded parking area by the Ag Building had started being constructed. The general contractor had informed us that he was removing a large berm on the side of the building that had many shrubs and trees installed just a few years ago. The contractor also informed us he was going to pull the plants out with a large excavator and install them with a backhoe and wanted to know where we wanted to have the plants installed. The timing for this couldn't have been worse when it comes to the transplanting of plant material. Some of these trees were donations from the vocational school down the road. Of course we didn't want to lose this material, so we offered our services to move the trees, and other plant material with our large tree spade for the trees and smaller tree spade for the shrubs. The intent is to grab as much soil as possible and keep them from drying out with daily watering. At least we will have a chance for the material to survive. This hopefully worked out well for the plants, and the contractor supplied the manpower to back fill and water the plants on a daily basis.



## Consider These Upcoming Events !!

### 34th Annual Monmouth County Fair

July 23—27, 2008 Wednesday through Sunday 5:00 p.m. to 11:00 p.m.

Five days of fun and excitement for everyone

East Freehold Park Showground's Kozloski Rd., Freehold, NJ

Family Nights Wednesday - July 23, 5 pm - 11 pm

Friday - July 25, 5 pm - 11 pm

### 5th Annual 4-H Arts Camp

August 22-24, 2008 Friday 11:00 a.m. - Sunday 12:00 Noon Grades K-12

Camp Nomoco - Freehold Township For more information contact Ellen Williams, 4-H Agent at the 4-H Office (732) 431-7266.

### Join our "E - list"

This is our "A"-list of environmentally friendly readers

Visit our web site and go to the contact us page, Fill in all the pertinent information and you will receive our NEWSLETTER via e-mail. This is our environmentally friendly way of getting the news out to you. Save tax-payer dollars along with many trees and very little effort.

# Monmouth County Shade Tree Newsletter

Editor; Thomas Aumack, Superintendent

Editor; David Robbins, Asst. Supt.

Freeholder Liaison — William C. Barham  
Director of Public Works  
and Engineering — John W. Tobia

## Commissioners:

Vice Chairperson — William Porter  
Secretary — Thomas Ritchie  
Kevin Thompson  
Julie McGowan  
Gary Defelice

**Monmouth County Shade Tree**  
[www.visitmonmouth.com/shadetree/](http://www.visitmonmouth.com/shadetree/)

**Stephanie Hemphill, Minnesota Public Radio**  
[minnesota.publicradio.org/display/web/2008/06/19/biomass\\_study/](http://minnesota.publicradio.org/display/web/2008/06/19/biomass_study/) June 19, 2008

**Wildfire Danger Fuels Interest in Mills to Burn Wood Waste for Electricity**  
By Jeff Barnard  
Associated Press — Jan. 20, 2007  
[sports.espn.go.com/outdoors/general/news/story](http://sports.espn.go.com/outdoors/general/news/story)

**Fire danger fuels trees-for-fuel plans (biomass/hog fuel')**  
[www.freerepublic.com/focus/f-news/1770859/posts](http://www.freerepublic.com/focus/f-news/1770859/posts)

**Bioenergy Economic Factsheet**  
[www.arkansasrenewableenergy.org/fact%20sheets/Economics](http://www.arkansasrenewableenergy.org/fact%20sheets/Economics)

**Through Genetics, Tapping a Tree's Potential as a Source of Energy**  
[www.nytimes.com/2007/11/20/science/20tree.html](http://www.nytimes.com/2007/11/20/science/20tree.html)

**Turning Genetically Engineered Trees Into Toxic Avengers**  
[www.nytimes.com/2007/11/20/science/20tree.html](http://www.nytimes.com/2007/11/20/science/20tree.html)

**Scientists try to resurrect that old chestnut**  
[www.pressofatlanticcity.com/179/story/183730.html](http://www.pressofatlanticcity.com/179/story/183730.html)

**Energy Information Administration**  
©2007 Mount Wachusett Community College  
[www.mwcc.edu/renewable/biomass.html](http://www.mwcc.edu/renewable/biomass.html)

**New Jersey Department of Agriculture NJ 2-1-1 Partnership**  
[www.nj211.org](http://www.nj211.org)

**Bioenergy from Georgia's Forest**  
[www.gfc.state.ga.us/ForestMarketing/BiomassEnergy.c](http://www.gfc.state.ga.us/ForestMarketing/BiomassEnergy.c)

**Union of Concerned Scientists**  
[www.ucsusa.org/food\\_and\\_environment/genetic\\_engineering/what-is-genetic-engineering.html](http://www.ucsusa.org/food_and_environment/genetic_engineering/what-is-genetic-engineering.html)

**Genetically Engineered Trees to Fight Beetles**  
[www.npr.org](http://www.npr.org)

**Super trees: The latest in genetic engineering**  
[www.money.cnn.com/2007/07/31/technology/pluggedin\\_gunther\\_supertrees.fortune/index.htm](http://www.money.cnn.com/2007/07/31/technology/pluggedin_gunther_supertrees.fortune/index.htm)

**Energy Information Administration**  
[www.eia.doe.gov/kids/energyfacts/sources/renewable/biomass.html](http://www.eia.doe.gov/kids/energyfacts/sources/renewable/biomass.html)

**Restoration of the American Chestnut in New Jersey**  
[www.fws.gov/northeast/njfieldoffice](http://www.fws.gov/northeast/njfieldoffice)

Monmouth County Shade Tree  
Commission  
PO Box 5033  
Freehold NJ 07728  
USA

FIRST CLASS  
US POSTAGE  
  
PAID  
FREEHOLD, NJ 07728  
  
PERMIT NO. 1

Attach Label here